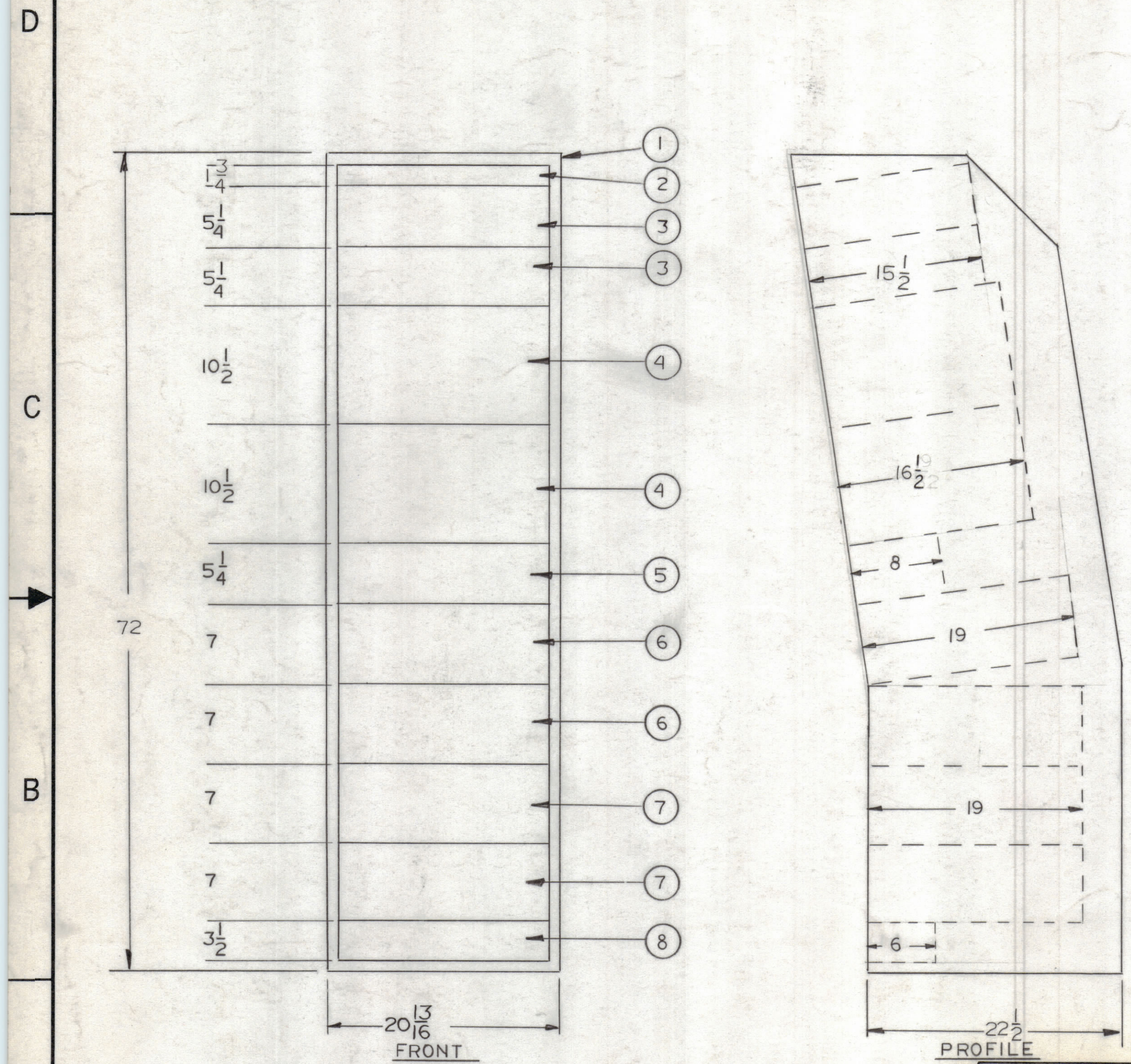


REVISIONS							
ZONE	LTR	DESCRIPTION	DATE	E.M.N.O.	DRAFT	CHKD	APPD
	A	REVISED WEIGHT	1/20/69	WRH	WRH		

- NOTES:
1. INTERPRET IN ACCORDANCE WITH MIL-D-1000
  2. INPUT POWER: 115V AC; 1PHASE; 60CPS.
  3. POWER CONSUMPTION 1850 WATTS, TOTAL UNIT 16
  4. WEIGHT: 788 LBS. TOTAL  
DOES NOT INCLUDE 153 LBS OF GFE
  5. FOR PERFORMANCE, REFER TO TMC SPECIFICATION 40SI6A063
  6. FOR TECHNICAL SPECIFICATIONS, REFER TO S66-94
  7. FOR SPARES, MAINTENANCE AND INSTALLATION REFER TO INSTRUCTION MANUAL.



QTY REQD	NOMEN OR DESC	CODE IDENT	IDENT. NO.	FIND NO.
				9
1	AC AUX. PNL.		APP-16	8
2	VLF RCVR.		VLRC-1	7
2	MF RCVR.		VLRB-1	6
1	WING TIP REM. CONT.		AX8048	5
2	HF RCVR.	G.F.E.	R390A/URR	4
2	UHF RCVR.	14632	RS III-IB	3
1	PANEL, BLANK		MS8200-1	2
1	CABINET, ELECT. EQUIP		RAK153-16D	1

QTY. REQ.	ITEM	PART NO.	DESCRIPTION	SYMBOL
LIST OF MATERIAL				
<b>THE TECHNICAL MATERIEL CORP.</b> MAMARONECK, NEW YORK TMC MODEL NO. RMPB-ING P/O RMPB-ING SOURCE CONTROL DWG				
FINAL APPROVAL		DATE	3-7-68	
MECH. DES.		DATE	2/14/68	
ELECT. DES.		DATE	2-27-68	
CHECKED		DATE	2-27-68	
DRAWN		DATE	2-26-68	
MATERIAL			SIZE	ISSUE
FINISH			C 82679	A
			CODE IDENT. NO.	DWG NO.
			ID8044	
			SCALE 1/8" = 1"	SHEET 1 OF 2

QTY / UNIT	MODEL USED ON	ASS'Y NO.
1	UNIT 16D	
APPLICATION		
CODE		
NOTICE TO PERSONS RECEIVING THIS DRAWING THE TECHNICAL MATERIEL CORPORATION claims proprietary right in the material disclosed hereon. This drawing is issued in confidence for engineering information only and may not be reproduced or used to manufacture anything shown hereon without permission from THE TECHNICAL MATERIEL CORPORATION to the user. This drawing is loaned for mutual assistance and is subject to recall at any time.		