

4

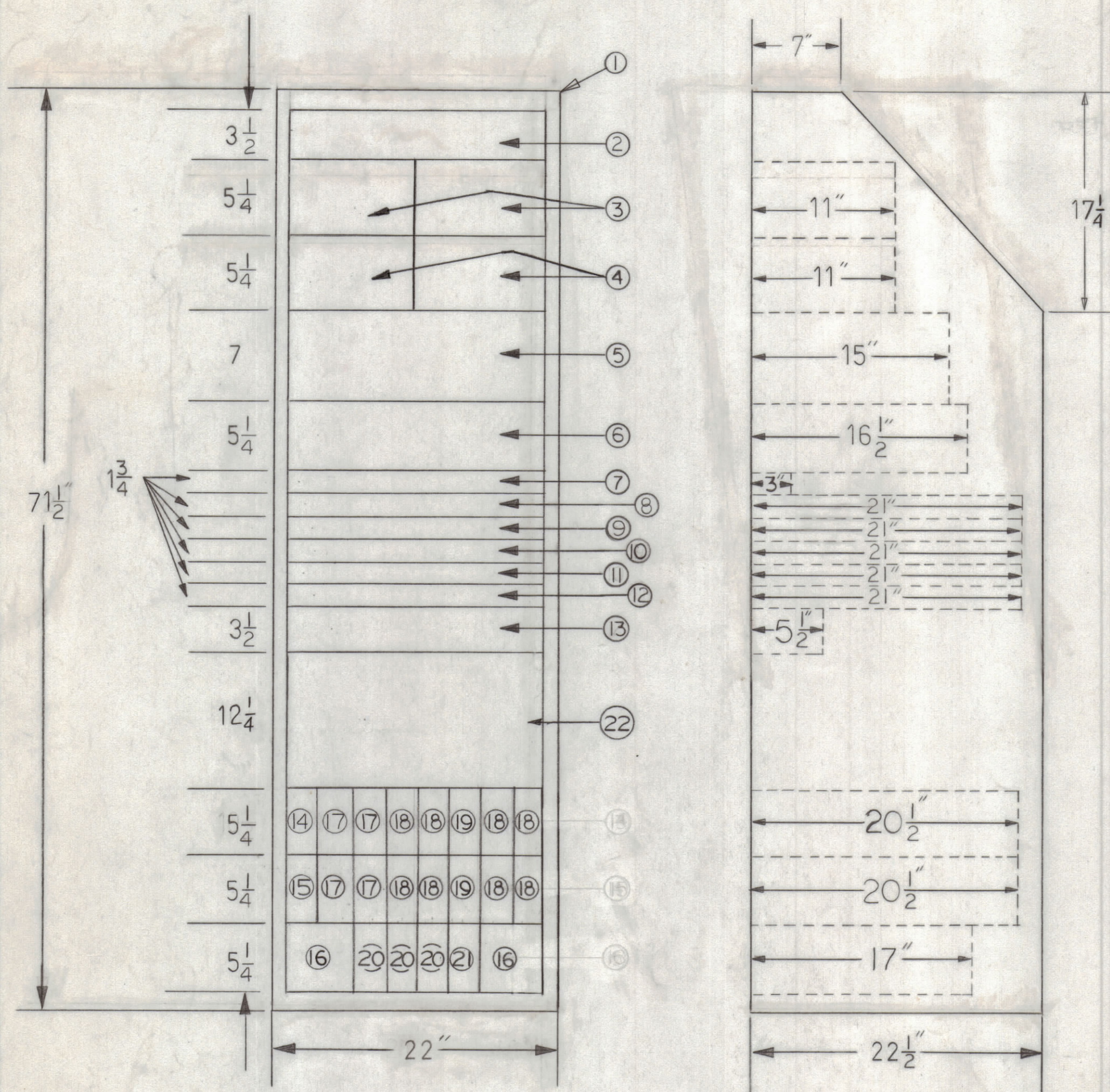
3

2

1

REVISIONS						
ZONE	LTR	DESCRIPTION	DATE	E.M.N.O.	DRAFT	CHKD APPD

NOTES
 1. INTERPRET IN ACCORDANCE WITH MIL-STD-1000
 2. UNIT POWER LEVEL, POWER SUPPLY
 3. POWER CONSUMPTION ESTIMATE TOTAL FOR UNIT 14
 4. SUBSTITUTIONS IN ACCORDANCE WITH MIL-D-1000



FRONT VIEW

PROFILE

QTY REQ	NOMEN OR DESC	CODE IDENT	IDENT NO.	FIND NO.
1		GFE	KW7	22
1	P. S. MODULE	102A1	176	21
3	CLOCK MODULE	"	117	20
2	COMP. MODULE	"	310	19
8	REC. MODULE	"	302	18
4	SENDING MODULE	"	301D	17
2	SYN REGEN REPEATER MODULE	"	174	16
1	MODULE EXTENDER	"	231	15
1	LINE AMPLIFIER	"	325B	14
1	CONTROL PANEL	"	SR233	13
1	DC JACK FIELD	"	367	12
1	VF JACK FIELD	"	"	11
1	VF JACK FIELD	"	"	10
1	DC JACK FIELD	"	"	9
1	DC JACK FIELD	"	"	8
1	METER PANEL	"	SR127B	7
1	PATTERN GENERATOR	"	819	6
1	DATA DISTORTION ANALYZER	"	820B	5
2	DEMULTIPLEXER	"	124	4
2	MULTIPLEXER	"	123	3
	BLANK PANEL			2
1	CABINET, ELEC EQUIP	102A1	141HAX	1

QTY. REQ.	ITEM	PART NO.	DESCRIPTION	SYMBOL
LIST OF MATERIAL				
FINAL APPROVAL: <i>[Signature]</i> DATE: 3-4-69 MECH. DES.: <i>[Signature]</i> DATE: 3/4/68 ELEGT. DES.: <i>[Signature]</i> DATE: 1/21/68 CHECKED: <i>[Signature]</i> DATE: 2-27-68 DRAWN: <i>[Signature]</i> DATE:				
THE TECHNICAL MATERIEL CORP. MAMARONECK, NEW YORK ST MC MODEL NO. RMPC-1111G P/O RMPC-1 SOURCE CONTROL DWG.				
SIZE	CODE IDENT. NO.	DWG NO.	ISSUE	
C	82679	ID8023	1	
SCALE 1/8" = 1"			SHEET 2 OF 3	

1	UNIT 14 B	
QTY / UNIT	MODEL USED ON	ASS'Y NO.
APPLICATION		
	CODE	
NOTICE TO PERSONS RECEIVING THIS DRAWING THE TECHNICAL MATERIEL CORPORATION claims proprietary right in the material disclosed hereon. This drawing is issued in confidence for engineering information only and may not be reproduced or used to manufacture anything shown hereon without permission from THE TECHNICAL MATERIEL CORPORATION to the user. This drawing is loaned for mutual assistance and is subject to recall at any time.		

UNLESS OTHERWISE SPECIFIED DIMENSIONS ARE IN INCHES AND INCLUDE CHEMICALLY APPLIED OR PLATED FINISHES

TOLERANCES ON
 DECIMALS: .X ± .05, .XX ± .01, .XXX ± .005
 FRACTIONS: ± 1/64, ANGLES: ± 0° -30'

MATERIAL
 FINISH

4

3

2

1

ID 8023

A