

REVISIONS						
ZONE	LTR	DESCRIPTION	DATE	E.M.N.NO	DRAFT	CHKD APPD
	A	CHANGES & ADDITIONS	10/21/68		C. SROD	<i>[Signature]</i>
	B	UNIT LOCATION NOS REDESIGN.	3/11/69	E	CPD	<i>[Signature]</i>

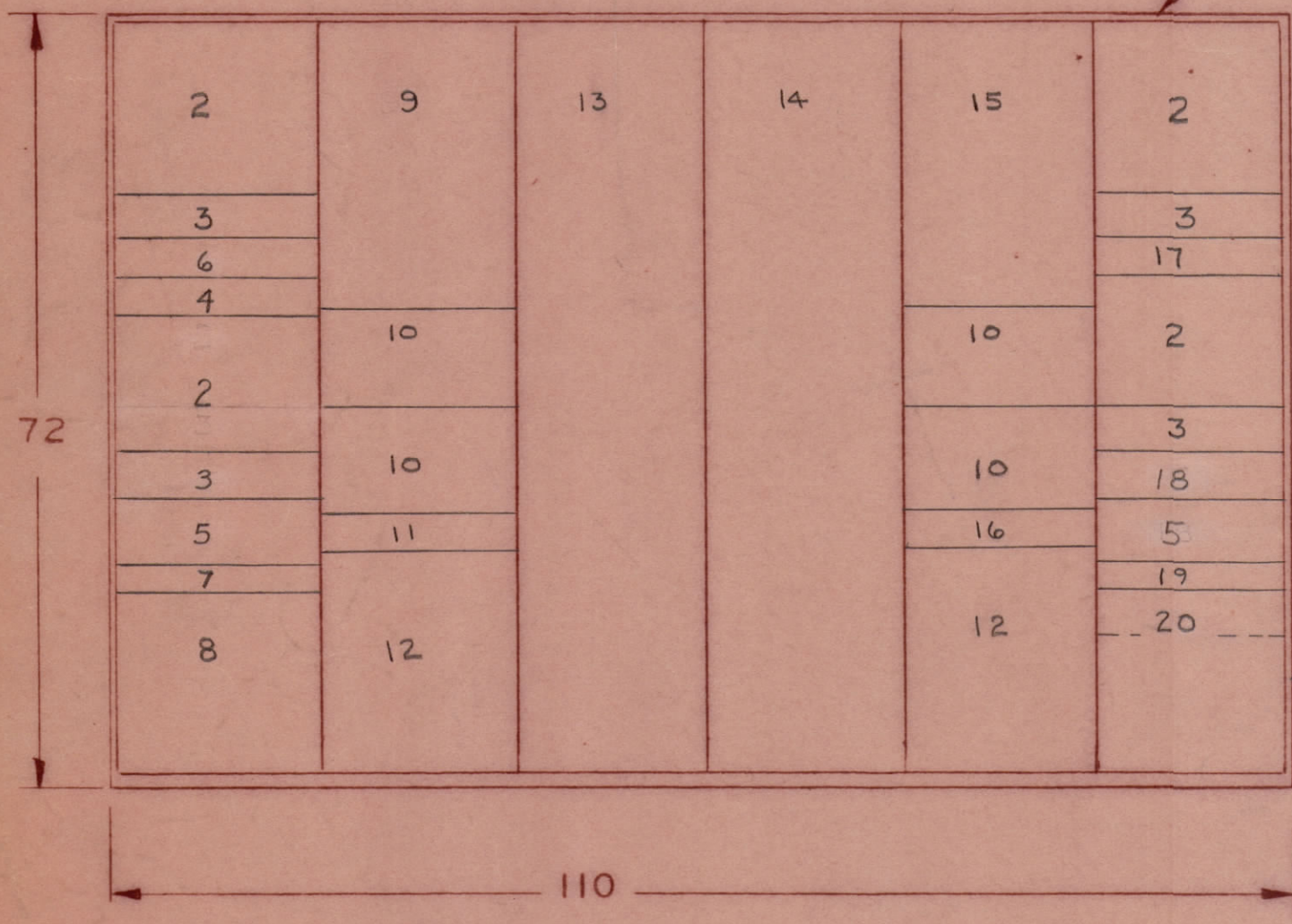
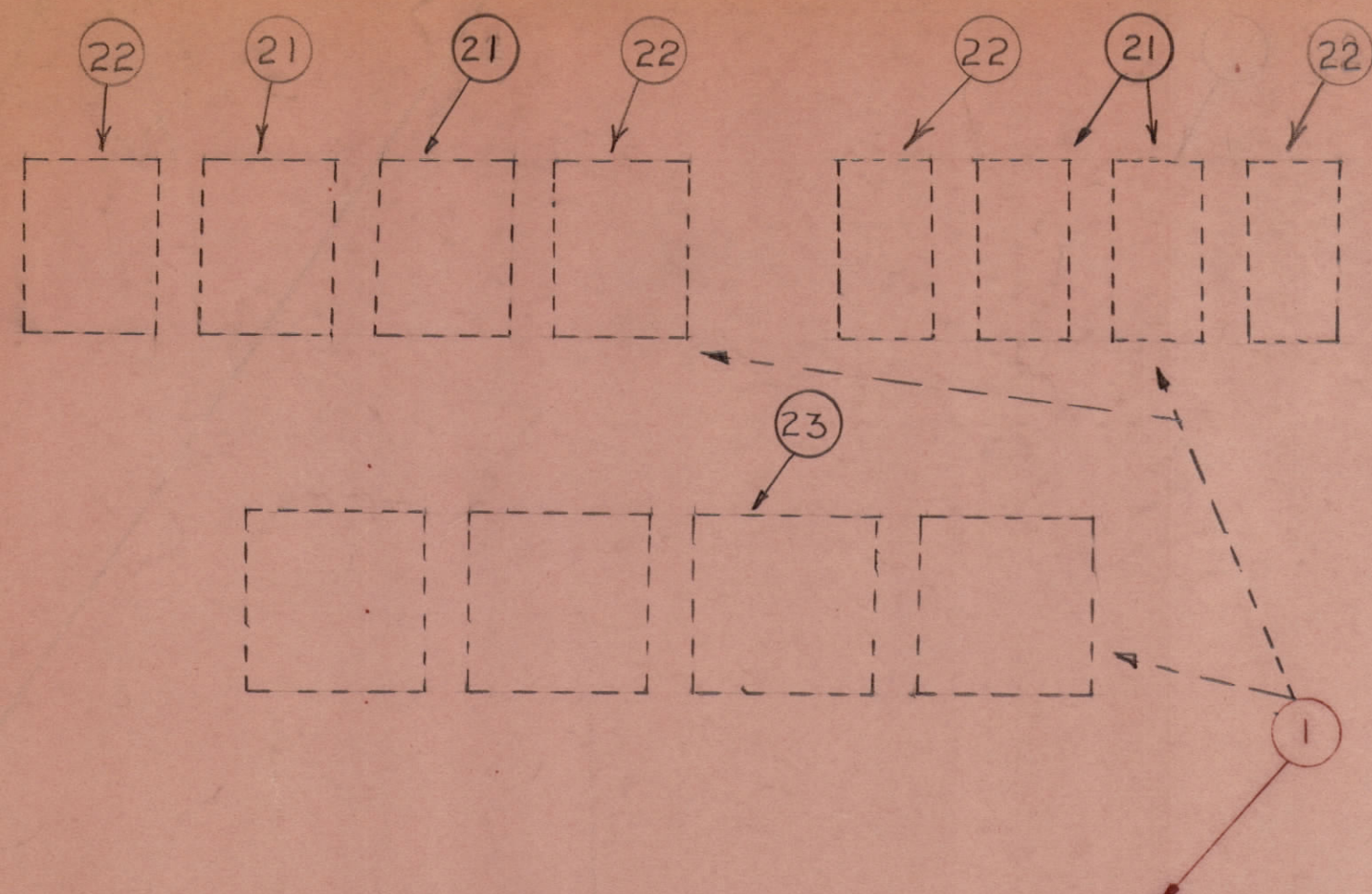
FOR WEIGHT DISTRIBUTION ITEMS 21, 22, 23 ARE LOCATED EXTERNAL OF ITEM 24

1	AMPLIFIER		AX8076	24
4	PLATE POWER SUPPLY		AV1080	23
4	BIAS & MODULATOR POWER SUPPLY		API39	22
4	SCREEN POWER SUPPLY		API40	21
1	PRIMARY CONTROL ASSY		AX8069	20
1	DEMODULATOR-CHOPPER ASSY		AX8028	19
1	POWER SUPPLY ASSY		API41	18

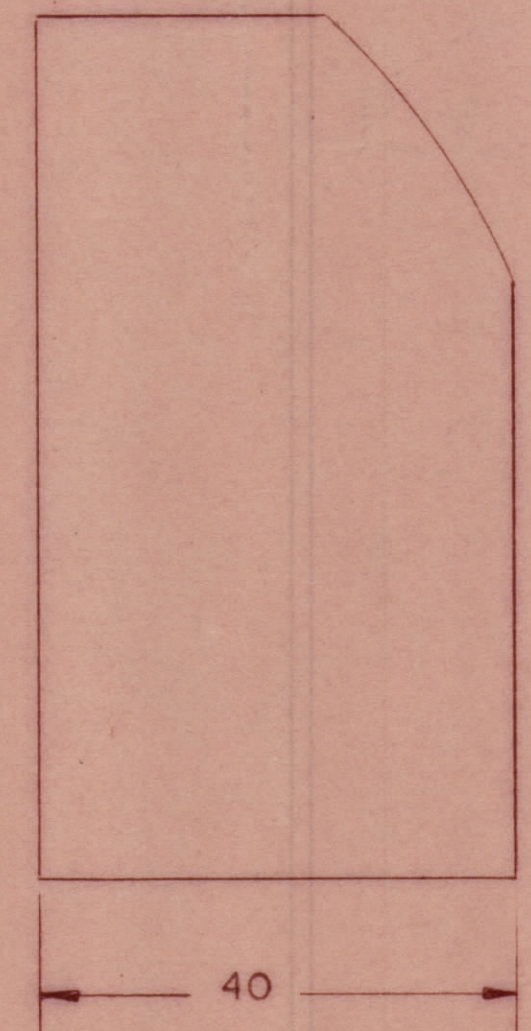
NOTES:

1. INTERPRET IN ACCORDANCE WITH MIL-D-1000
2. POWER INPUT: 208V, 3 PHASE, 60CPS.
3. POWER CONSUMPTION: 45,000 WATTS
4. WEIGHT: 5000 LBS
5. FOR PERFORMANCE REFER TO TMC SPECIFICATION 40SI2A053
6. FOR TECHNICAL SPECIFICATIONS REFER TO S66-94
7. FOR SPARES, MAINTENANCE AND INSTALLATION REFER TO INSTRUCTION MANUAL

	BLANK PANEL		MS157-3	17
1	CHANNEL 1 AND 2 BIAS CONTROL ASSY		AX8067-1	16
1	CHANNEL 1 AND 2 TUNING CONTROL ASSY		AX8074-1	15
1	CHANNEL 1 AND 2 CONTROL-INDICATOR ASSY		AX8040-1	14
1	CHANNEL 3 AND 4 CONTROL-INDICATOR ASSY		AX8040-2	13
2	SCREEN SUPPLY FUSE PANEL ASSY		AX8073	12
1	CHANNEL 3 AND 4 BIAS CONTROL ASSY		AX8067-2	11
4	VIDEO MODULATOR ASSY		AX8038	10
1	CHANNEL 3 AND 4 TUNING CONTROL ASSY		AX8074-2	9
1	MASTER CONTROL ASSY		AX8070	8
1	VSWR OVERLOAD ASSY		AX8037	7
1	FREQUENCY COUNTER ASSY	06811	1017-2ED1/1979H	6
2	SIGNAL PROCESSOR ASSY		AX8026	5
1	COUNTER-INPUT SELECTOR ASSY		AX8093	4
4	SYNCHRONIZER ASSY	28480	8T08A	3
4	PHASE-LOCKED OSCILLATOR ASSY		AV1065	2
1	TRANSMITTING SET, T.V		SPT3KVHF	1
QTY REQD	NOMEN. OR DESC	CODE IDENT	IDENT. NO	FIND NO.



FRONT



PROFILE

QTY / UNIT	MODEL USED ON	ASS'Y NO.
APPLICATION		
CODE		
<p>NOTICE TO PERSONS RECEIVING THIS DRAWING</p> <p>THE TECHNICAL MATERIEL CORPORATION claims proprietary right in the material disclosed herein. This drawing is issued in confidence for engineering information only and may not be reproduced or used to manufacture anything shown herein without permission from THE TECHNICAL MATERIEL CORPORATION to the user. This drawing is loaned for mutual assistance and is subject to recall at any time.</p>		

UNLESS OTHERWISE SPECIFIED DIMENSIONS ARE IN INCHES AND INCLUDE CHEMICALLY APPLIED OR PLATED FINISHES

TOLERANCES ON	
DECIMALS	FRACTIONS
.X ± .05	± 1/64
.XX ± .01	ANGLES
.XXX ± .005	± 0° .30'

MATERIAL	
FINISH	

QTY. REQ.	ITEM	PART NO.	DESCRIPTION	SYMBOL
LIST OF MATERIAL				
<p>FINAL APPROVAL: <i>[Signature]</i> DATE: 3-26-68</p> <p>MECH. DES: <i>[Signature]</i> DATE: <i>[Signature]</i></p> <p>ELECT. DES: <i>[Signature]</i> DATE: 3/21/68</p> <p>CHECKED: <i>[Signature]</i> DATE: 3-21-68</p> <p>DRAWN: <i>[Signature]</i> DATE: 3-20-68</p>				
<p>THE TECHNICAL MATERIEL CORP.</p> <p>MAMARONECK, NEW YORK</p> <p>TMC MODEL NO. SPT3KVHF</p> <p>SOURCE CONTROL DWG.</p>				
SIZE	CODE IDENT. NO.	DWG NO.	ISSUE	
C	82679	ID 8019	B	
SCALE 1/16" = 1"			SHEET 1 OF 1	