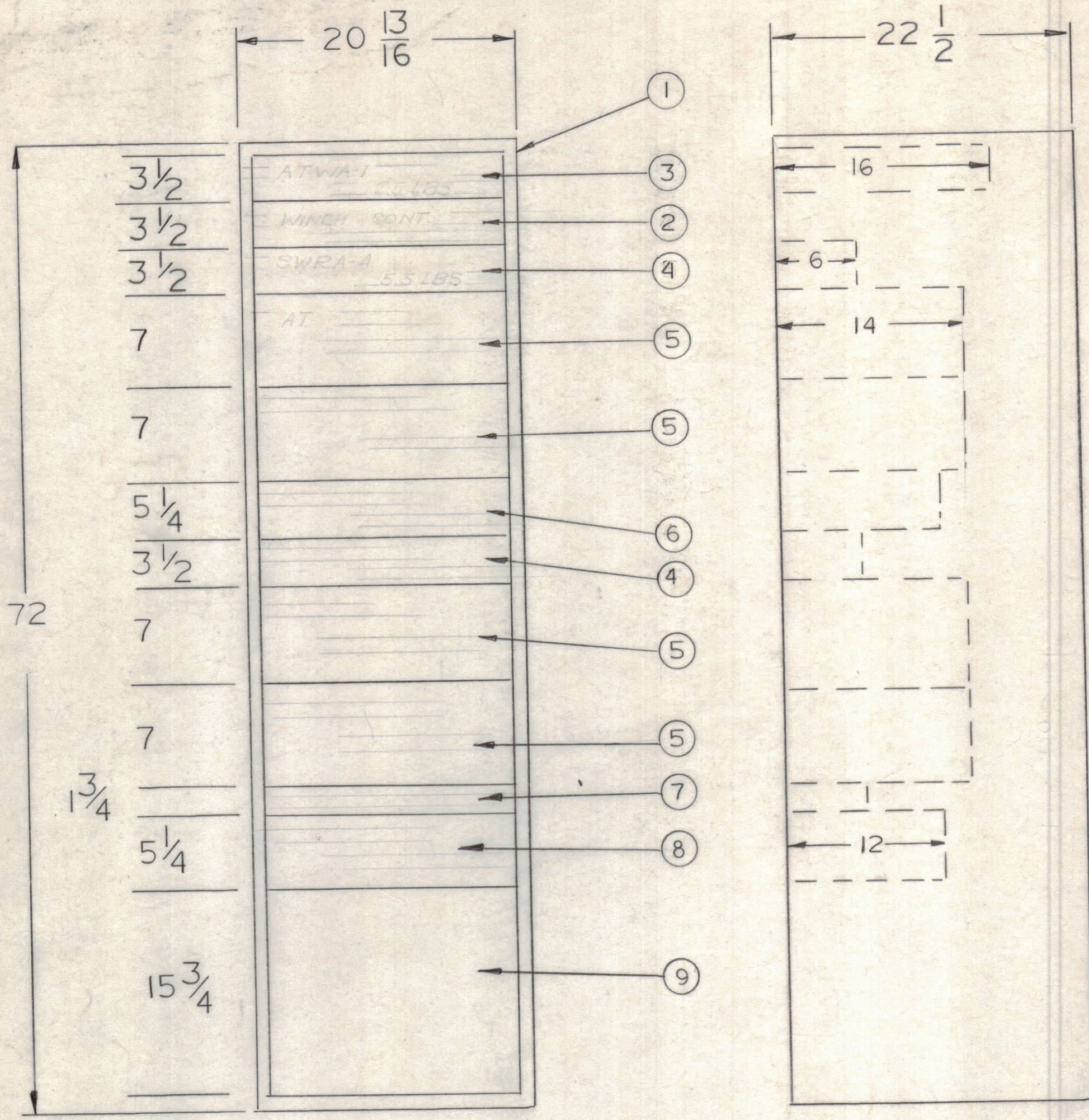


REVISIONS						
ZONE	LTR	DESCRIPTION	DATE	E.M.N.NO	DRAFT	CHKD APPD
	X1	REDRAW - EQUIP REARR	4-29-68		GB	
	B	SEE SHEET 2				



- NOTES:
1. INTERPRET IN ACCORDANCE WITH MIL-D-1000
 2. POWER INPUT 115 VAC; 1 PHASE; 60 CPS
 3. POWER CONSUMPTION; 500 WATTS
 4. WEIGHT: 402 LBS TOTAL UNIT 7
 5. FOR PERFORMANCE, REFER TO QA 5034 (34057A065)
 6. FOR TECHNICAL SPECIFICATIONS REFER TO S66-94

QTY REQ	NOMEN. OR DESC.	CODE IDENT	IDENT NO	FIND NO.
1	PANEL, BLANK		MS8200-1	9
1	ATMC-1 REMOTE READBCK PNL.		ATMCA-1	8
1	XMTR LEVEL CONTROL		ATPC-1	7
1	ACU-3 REMOTE READBCK PNL.		ACUA-3	6
4	ATS-4 REMOTE CONTROL PNL.		ATSA-4	5
2	INDICATOR SWR		SWRA-4	4
1	ATW-1 REMOTE READBCK PNL.		ATWA-1	3
1	WINCH CONTROL		AX 8049	2
1	CABINET, ELECT EQUIP.		RAK151-7B	1

FRONT

PROFILE

QTY. REQ.	ITEM	PART NO.	DESCRIPTION	SYMBOL
LIST OF MATERIAL				
THE TECHNICAL MATERIEL CORP. MAMARONECK, NEW YORK SOURCE CONTROL DRAWING P/O ASMA-14				
FINAL APPROVAL		DATE	THE TECHNICAL MATERIEL CORP. MAMARONECK, NEW YORK SOURCE CONTROL DRAWING P/O ASMA-14	
MECH. DES.		DATE		
ELECT. DES.		DATE		
CHECKED		DATE		
DRAWN		DATE	SIZE CODE IDENT.NO. DWG NO. ISSUE C 82679 ID 8014 B₂	
MATERIAL		SCALE		
FINISH		SHEET 1 OF 2		

UNIT 7B		
QTY / UNIT	MODEL USED ON	ASS'Y NO.
APPLICATION		
CODE		

NOTICE TO PERSONS RECEIVING THIS DRAWING
THE TECHNICAL MATERIEL CORPORATION claims proprietary right in the material disclosed hereon. This drawing is issued in confidence for engineering information only and may not be reproduced or used to manufacture anything shown hereon without permission from **THE TECHNICAL MATERIEL CORPORATION** to the user. This drawing is loaned for mutual assistance and is subject to recall at any time.