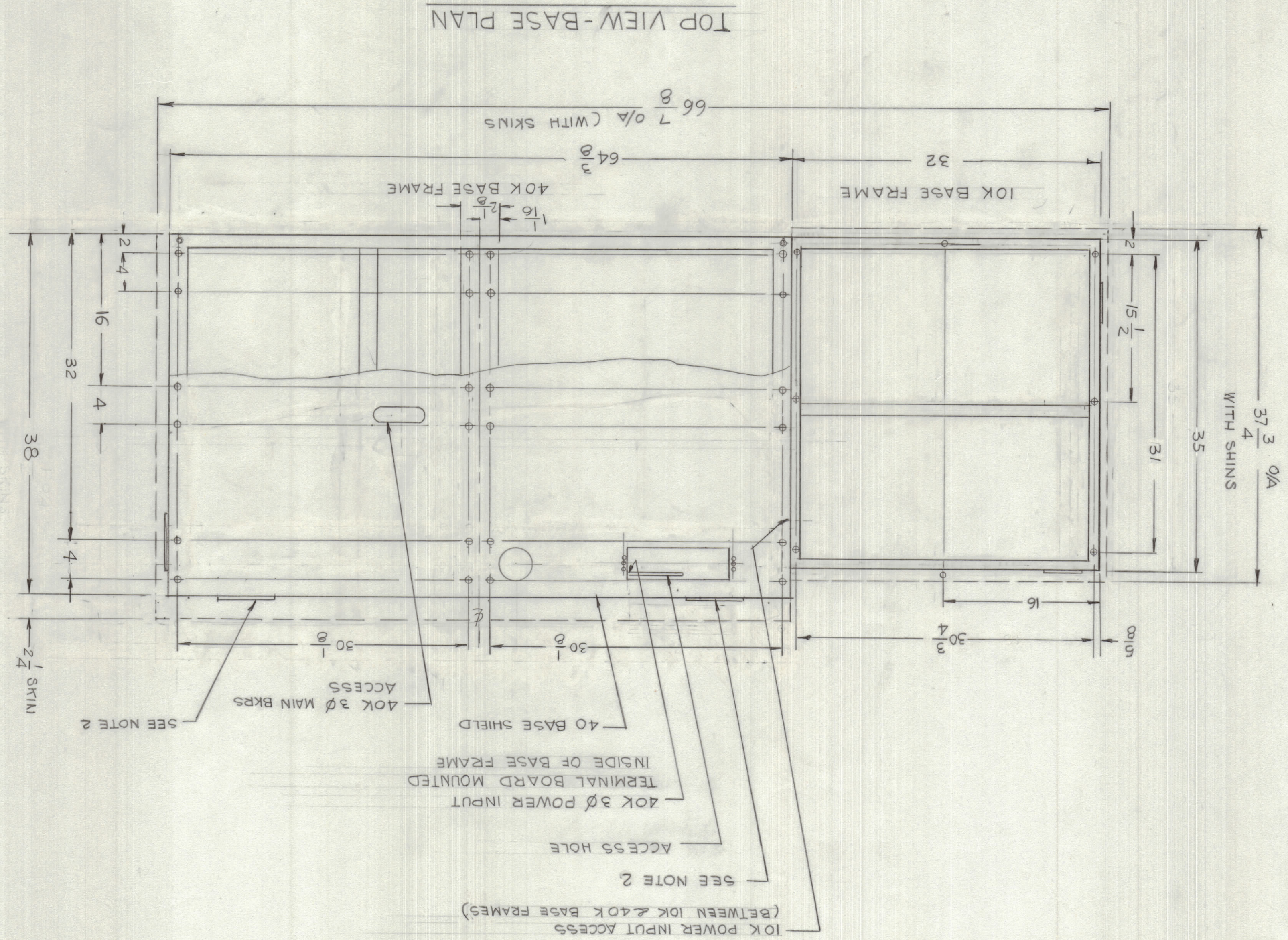


REVISIONS		
NO	DATE	APPROVED
1	3-16-77	<i>[Signature]</i>

EM	NO	DRAFT	CHKD	ZONE	LTR	DESCRIPTION
1	1	1	1	1	1	ORIGINAL RELEASE FOR PRODUCTION



NOTES:  
 1- THIS DRAWING IS INTENDED TO PROVIDE OUTLINE DETAIL FOR TRANSMITTER SITE SELECTION. PROPER ALIGNMENT OF TRANSMITTER IS BEST OBTAINED BY DRILLING BASE MTG HOLES UPON RECEIPT OF BASE FRAMES - REMOVABLE ACCESS HOLE PLATES FOR INCOMING AC POWER AND SIGNAL WIRING.

LIST OF MATERIAL	
QTY.	REQ. ITEM
	PART NO.
	DESCRIPTION
	SYMBOL

UNLESS OTHERWISE SPECIFIED DIMENSIONS ARE IN INCHES	
MECH. DES.	DATE
<i>[Signature]</i>	11/10/77
TOLERANCES ON	
DECIMALS	FRACTIONS
XXX ± .005	XX ± .01
XX ± .01	X ± .05
± 1/64	
APPLICATION	
CODE	ASSY. NO.
MATERIAL	
FINISH	DATE
	6-27-75
DRAWN	
<i>[Signature]</i>	<i>[Signature]</i>

NOTICE TO PERSONS RECEIVING THIS DRAWING	
The drawing is issued in confidence for engineering information only and may be reproduced or used to manufacture anything shown hereon without permission from THE TECHNICAL MATERIEL CORPORATION. The TECHNICAL MATERIEL CORPORATION claims proprietary right in the material disclosed hereon.	

TOP VIEW-BASE PLAN

