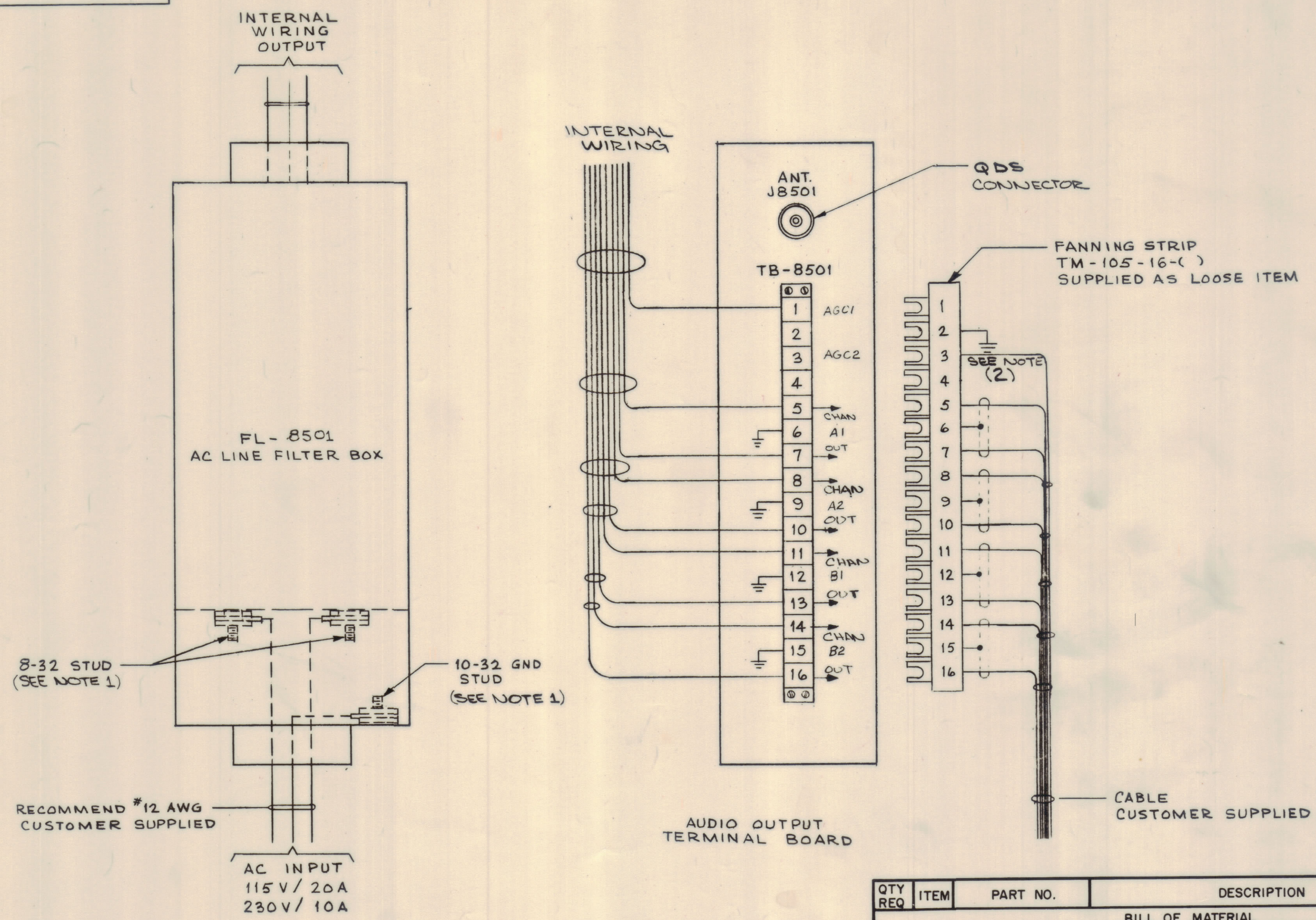


REVISIONS							
SYM	ZONE	DESCRIPTION	DATE	E.M.N.NO	DRAFT	CHKD	APPD
0		ORIGINAL RELEASE	5/24/73			CS	



8-32 STUD  
(SEE NOTE 1)

10-32 GND  
STUD  
(SEE NOTE 1)

RECOMMEND #12 AWG  
CUSTOMER SUPPLIED

AC INPUT  
115V / 20A  
230V / 10A

NOTE:  
1. TERMINAL LUGS FOR CUSTOMERS CONNECTION NOT SUPPLIED.  
2. FOR DIVERSITY OPERATION, CONNECT TERM. 1 TB8501 FROM RECEIVER #2 AND STRAP TERM. 1 & 3 TB8501 RECEIVER #1

MAXIMUM ALLOWABLE TOLERANCES HAVE BEEN DETERMINED AND ANY DEVIATIONS WILL BE CAUSE FOR REJECTION.

QTY REQ	ITEM	PART NO.	DESCRIPTION	SYMBOL
BILL OF MATERIAL				
UNLESS OTHERWISE SPECIFIED DIMENSIONS ARE IN INCHES TOLERANCES ON FRACTIONS DECIMALS ANGLES ±1/64 ±.005 ±1/2°			THE TECHNICAL MATERIEL CORP. MAMARONECK, NEW YORK	
RECEIVING SET, RADIO AN/FRR-74 OUTLINE & DIMENSIONS				
FINAL APPROVAL		DATE	FD 425	
MECH. DES.		DATE		
ELECT. DES.		DATE		
CHECKED		DATE		
DRAWN		DATE		
APPROVED FOR BUSHIPS		DATE		
CONTRACT NO.		DATE		
			CODE	
			8	
4 OF 3				