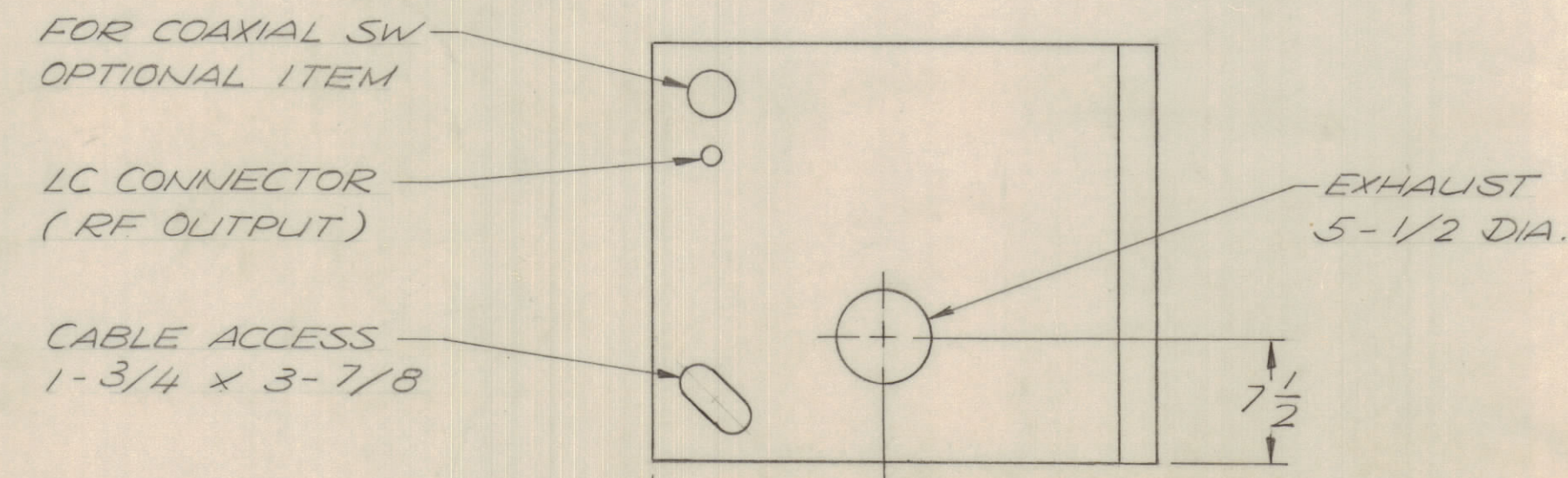
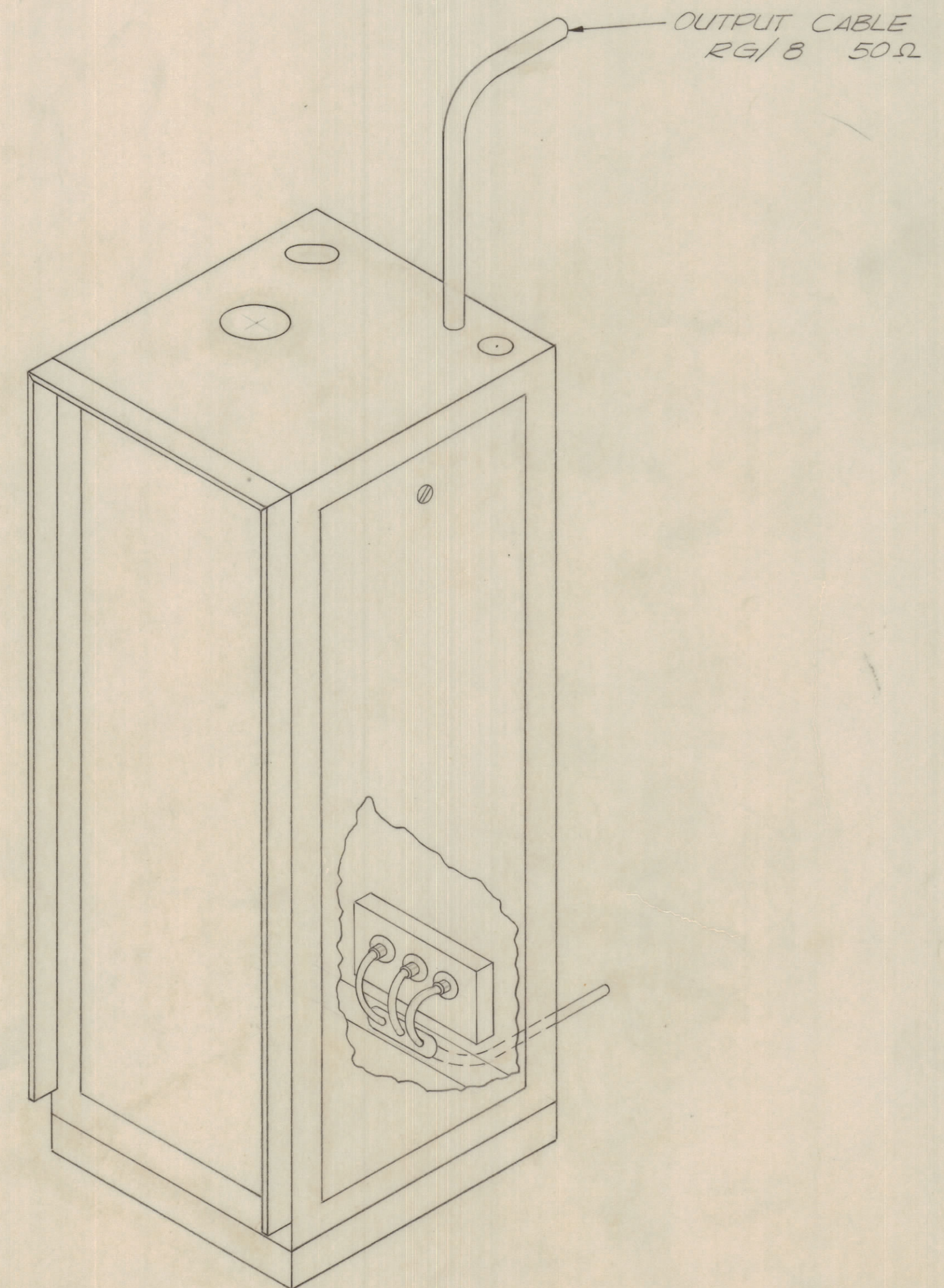


REVISIONS							
E.M. NO.	DRAFT	CHKD	ZONE	LTR	DESCRIPTION	DATE	APPROVED
	1				ORIGINAL RELEASE FOR PRODUCTION	3/9/72	

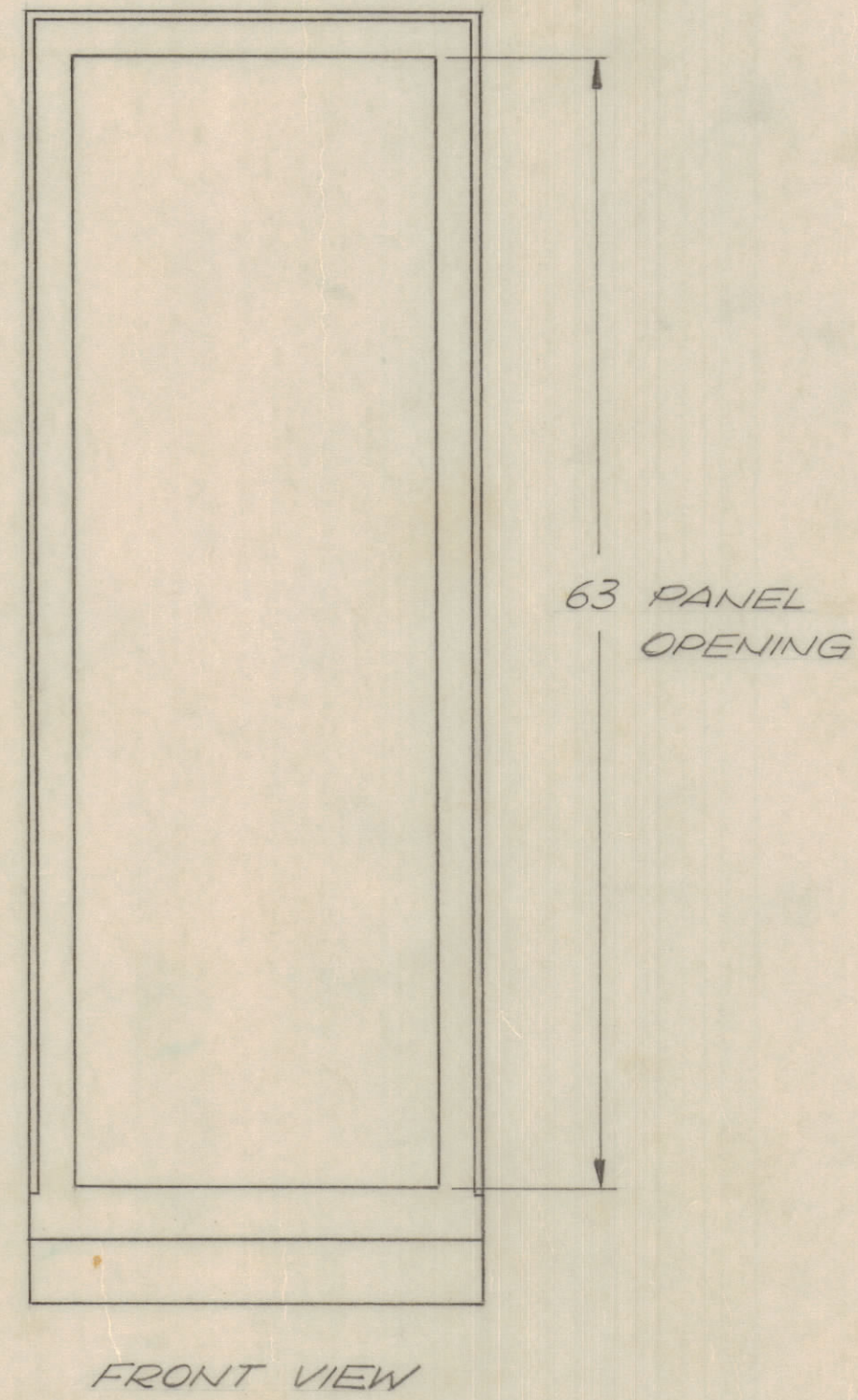
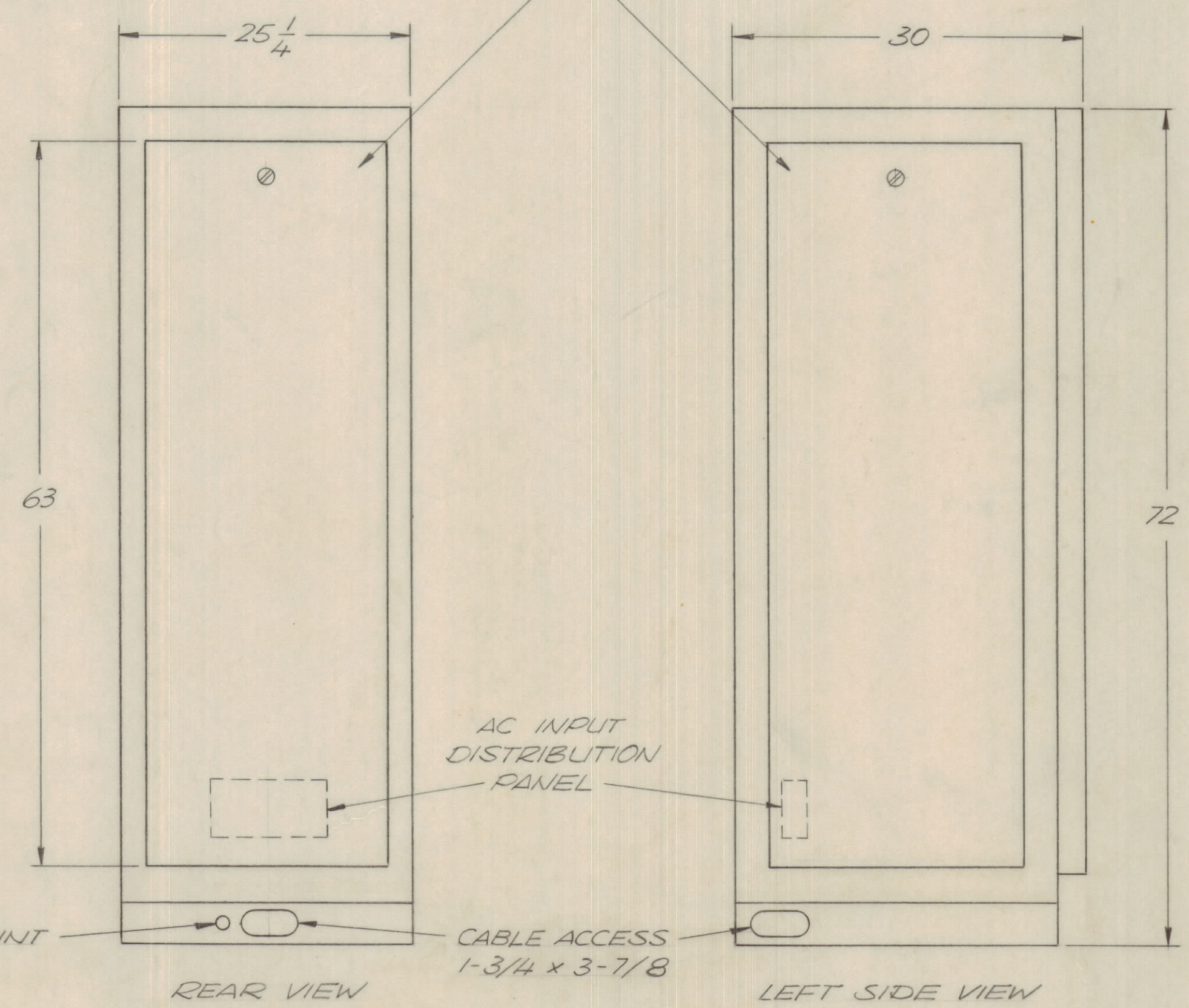


TOP VIEW

13 3/4



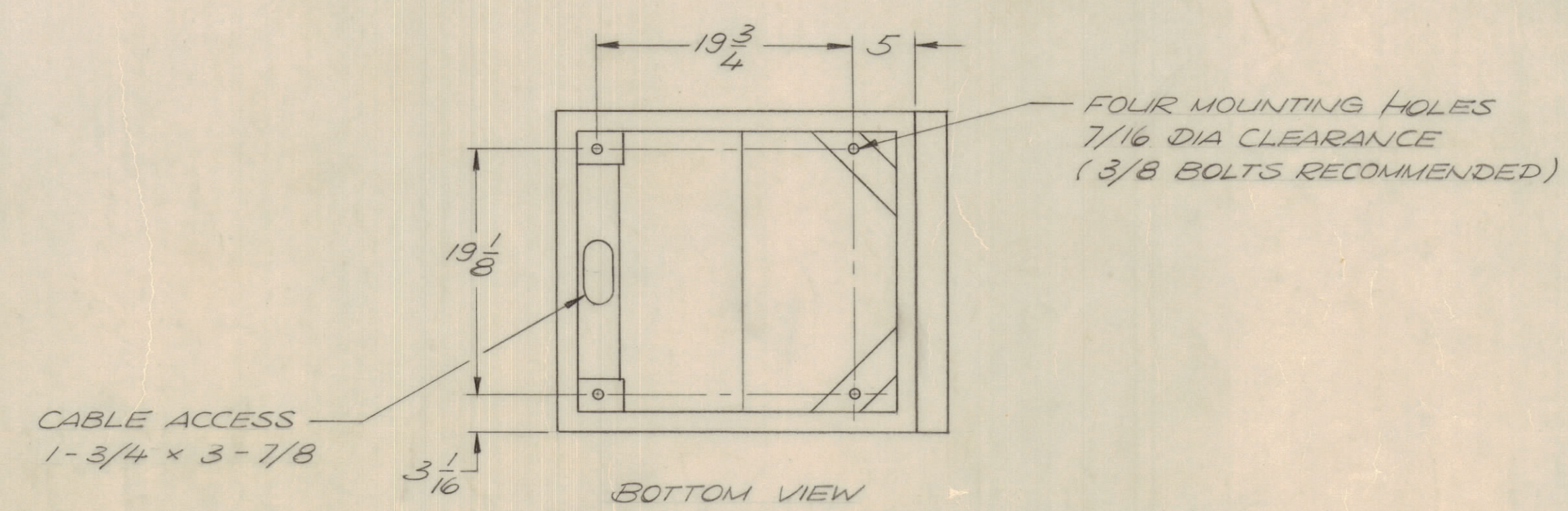
REMOVABLE REAR  
& SIDE PANELS



UNIT DATA

POWER REQD. — 3 KW

WEIGHT — 600 LBS.



QTY / UNIT	MODEL USED ON	ASS'Y NO.
	HFTM-1KJ	
APPLICATION		
CODE		
MATERIAL		
FINISH		

NOTICE TO PERSONS RECEIVING THIS DRAWING

THE TECHNICAL MATERIEL CORPORATION claims proprietary right in the material disclosed hereon. This drawing is issued in confidence for engineering information only and may not be reproduced or used to manufacture anything shown hereon without permission from THE TECHNICAL MATERIEL CORPORATION to the user. This drawing is loaned for mutual assistance and is subject to recall at any time.

QTY. REQ.	ITEM	PART NO.	DESCRIPTION	SYMBOL
LIST OF MATERIAL				
UNLESS OTHERWISE SPECIFIED DIMENSIONS ARE IN INCHES AND INCLUDE CHEMICALLY APPLIED OR PLATED FINISHES				
TOLERANCES ON				
DECIMALS		FRACTIONS		
.X ± .05		1/64		
.XX ± .01		ANGLES		
.XXX ± .005		± 0° -30'		
FINAL APPROVAL				
MECH. DES.		DATE		
ELECT. DES.		DATE		
CHECKED		DATE		
DRAWN		DATE		
THE TECHNICAL MATERIEL CORP. MAMARONECK, NEW YORK				
TRANSMITTING SET, RADIO HFTM-1KJ & HFTM 1KJ5 INSTALLATION DIAGRAM				
SIZE		CODE IDENT NO. DWG NO.		ISSUE
D 82679		ID 397		1
SCALE				SHEET OF