

8

7

6

5

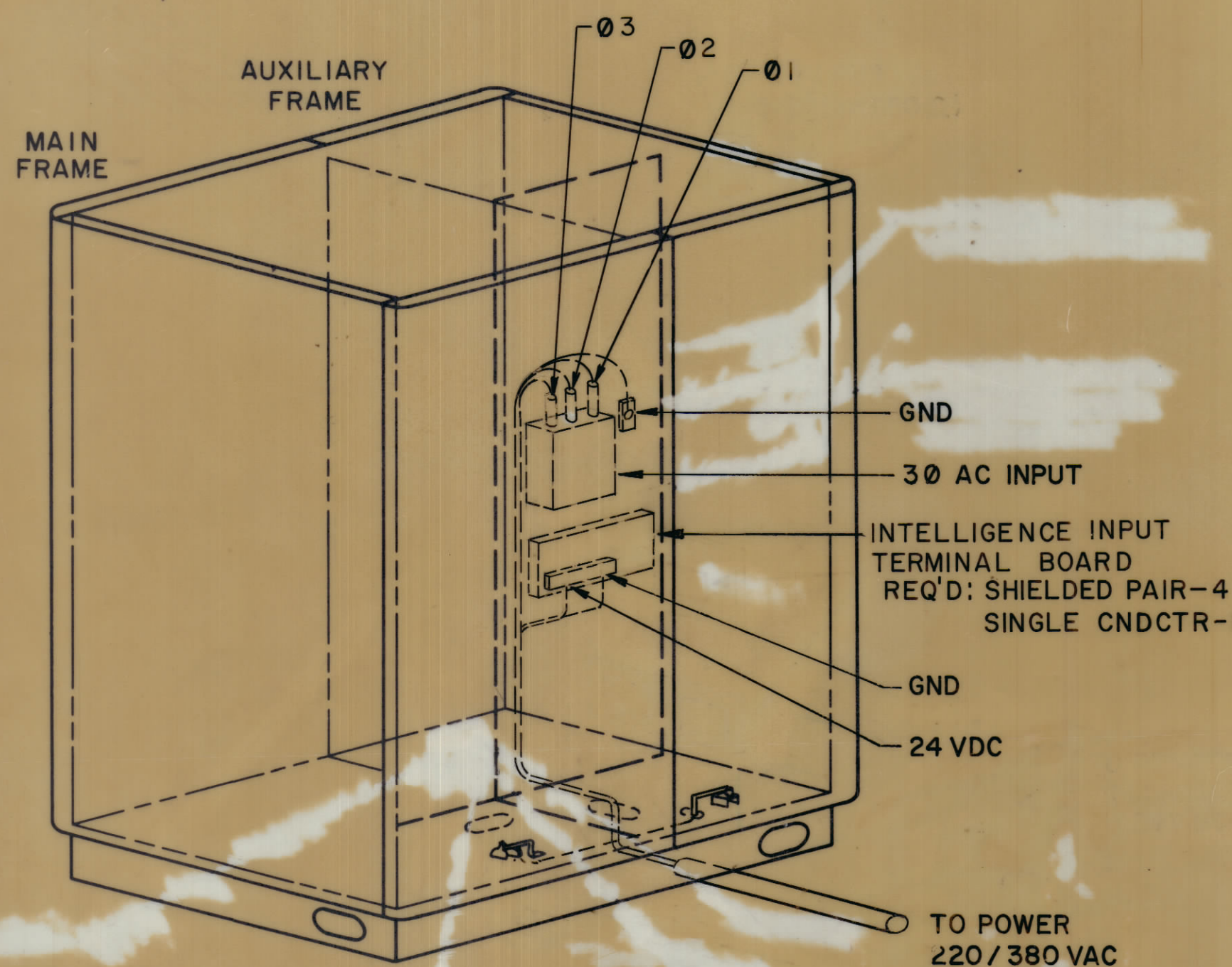
4

3

2

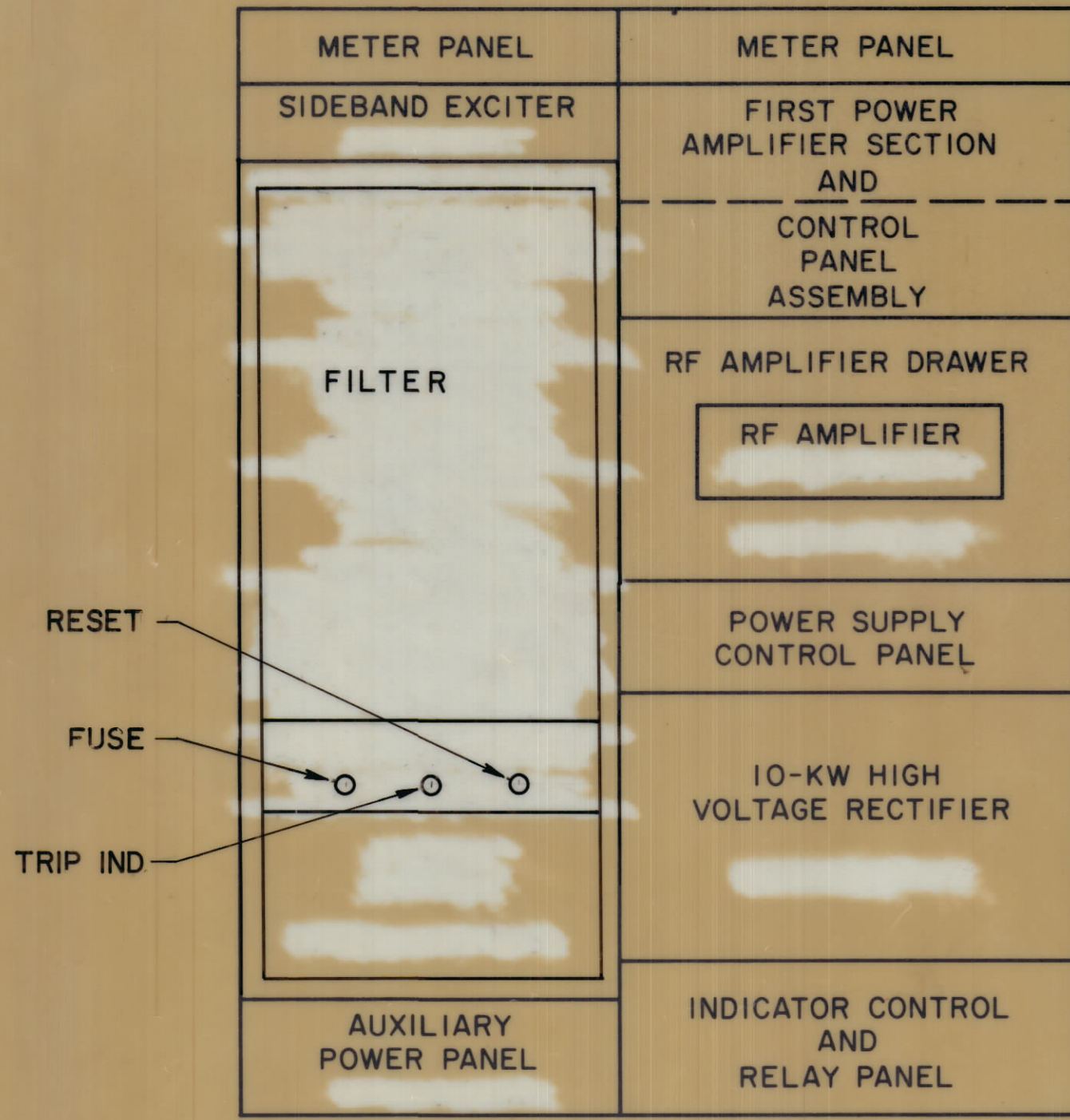
1

REVISIONS						
ZONE	LTR	DESCRIPTION	DATE	E.M.N. NO	DRAFT	CHKD APPD
	A	CHK. PHASES & IL. 3 & 4 ON CRATED DATA QUOTE PK	5/17/71	20352	R/T	W PEB



UNIT PHYSICAL DATA		
NOMENCLATURE	WEIGHT	DIMENSIONS INCHES
	lbs	L X W X H
AX5123 AUXILIARY FRAME	385	21 X 38-5/8 X 72
AX5124 MAIN FRAME	835	32 X 38-5/8 X 72
AX 103 HIGH VOLTAGE RECTIFIER DRAWER	76	28 3/4 X 16 3/4 X 10 3/4
SIDEBAND EXCITER	17	19 X 14-3/4 X 5-1/4

CRATED DATA				
CRATE NO.	NOMENCLATURE	WEIGHT	DIMENSIONS INCHES	CUBIC
		lbs	L X W X H	FEET
1	ASSORTED ITEMS	188	32 X 23-7/8 X 30-3/4	13.4
2	MOUNTING BASE WITH SHIELD	234	56-3/4 X 40-1/8 X 8	10.5
3	AX5123 AUXILIARY FRAME	768	82-1/8 X 50-1/4 X 32-1/4	77.0
4	AX5124 MAIN FRAME	1298	81-3/8 X 42 X 51-1/2	101.9
5	TF-203 POWER TRANSFORMER	536	28-3/4 X 19-3/4 X 24	7.9
6	AX 103 HIGH VOLTAGE RECTIFIER DRAWER	233	40 X 30 3/4 X 22	15.7
7	EXTERIOR COVERS & TRIM STRIPS	643	77 5/8 X 27 1/2 X 44 1/2	54.7



POWER REQUIREMENTS

POWER INPUT - 100/60 A PER LEG
 VOLTAGE - 220 / 380V AC
 PHASE - 3 Ø
 FREQUENCY - 50 Hz ± 5 %
 HEAT DISSIPATION - 20 KW
 AMBIENT TEMP RANGE - 0° TO 50° C
 INTAKE AIR - 594 CFM
 EXHAUST AIR - 587 CFM
 WEIGHT - 2800 lbs

DRAWN <i>[Signature]</i>	TRACED <i>[Signature]</i>	CHECKED <i>[Signature]</i>	APPROVED ENG. R <i>[Signature]</i>	DATE / /	PROJ. APPROVED
PAGE EUROPA S.p.A. ROME ITALY		TRANSMITTING SET, RADIO GPTM-IOKLA INPUT POWER DETAILS			
REPLACE DRWG. N°	DATE	DRAWING NUMBER	ID 383 A		
REPLACED BY DRWG N°	DATE	SCALES NONE	SHEET 1	OF 3	
PORTUGAL NATO	SECRETARIADO DA DEFESA NACIONAL C.E.I.-OTAN		ARQUIVO GEOME DES N° FOLHA DE SUBSTITUE O N° SUBSTITUIDO PELO N°		
VIII-IX-XI SLICES	IBERLANT		CLASSIF. DE SEGURANCA		
CONFERIDO / /					
APROVADO / /					