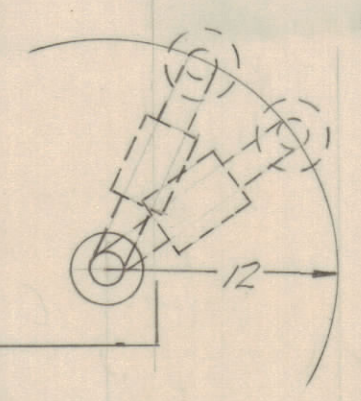
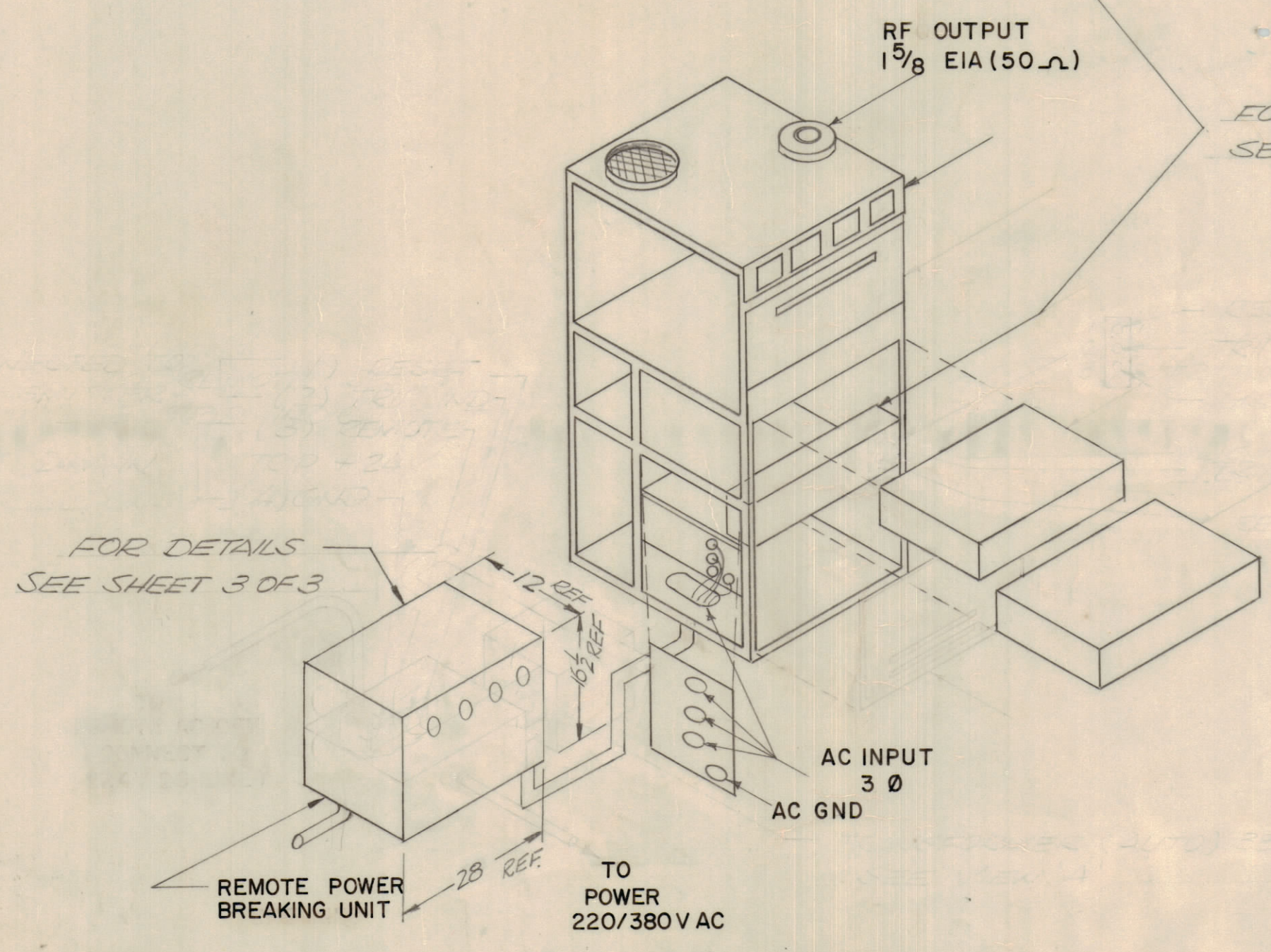
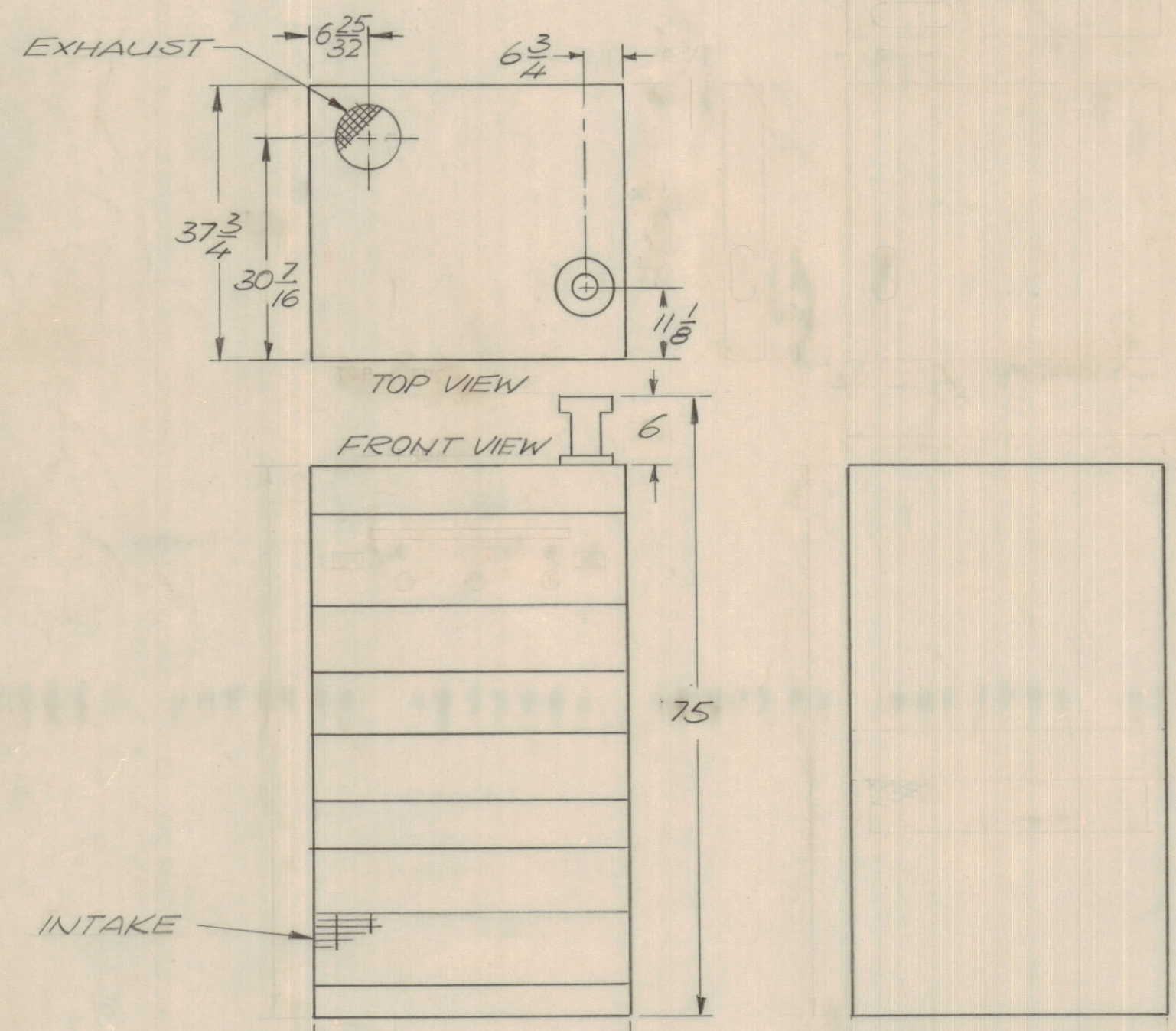
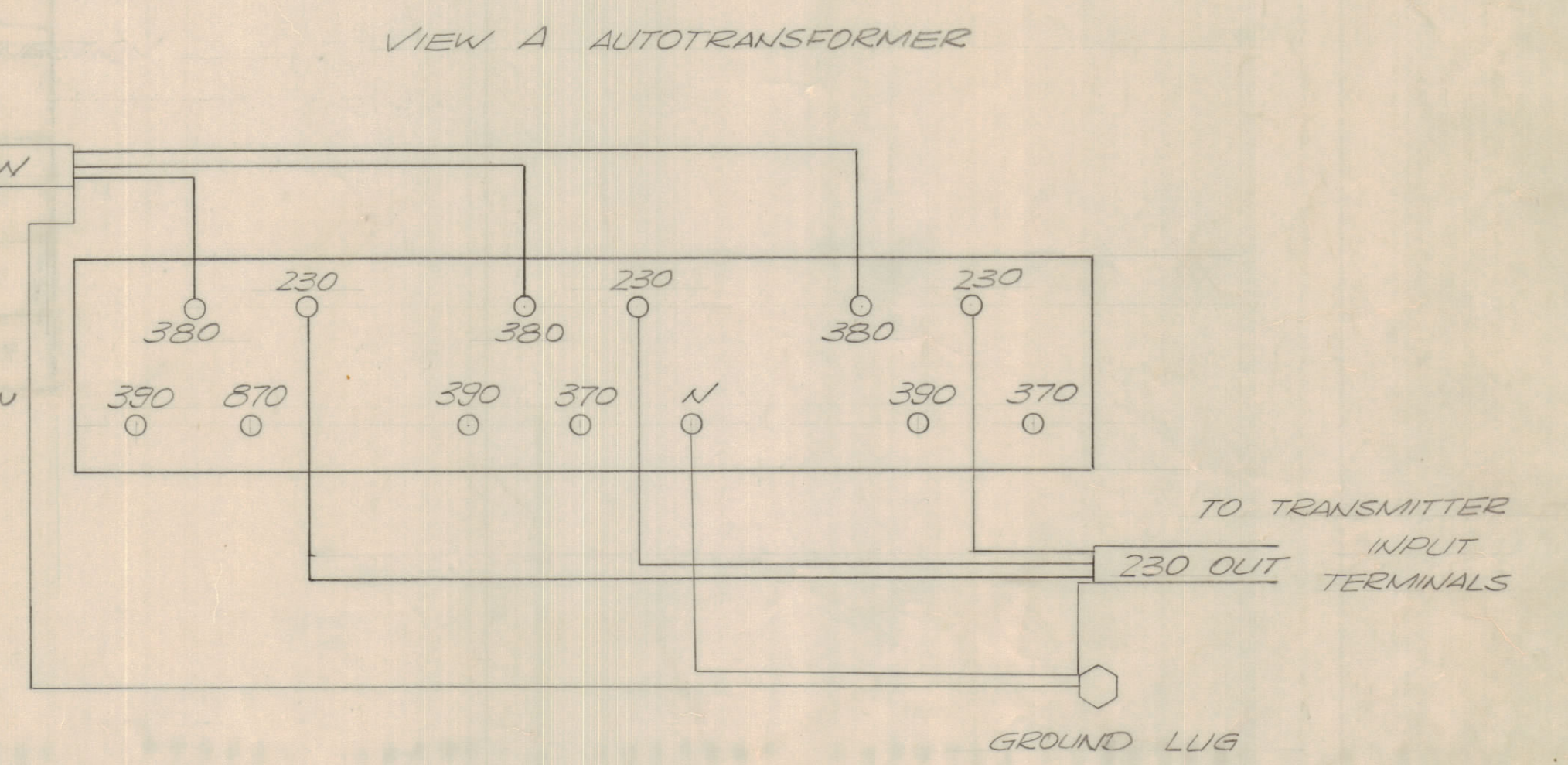
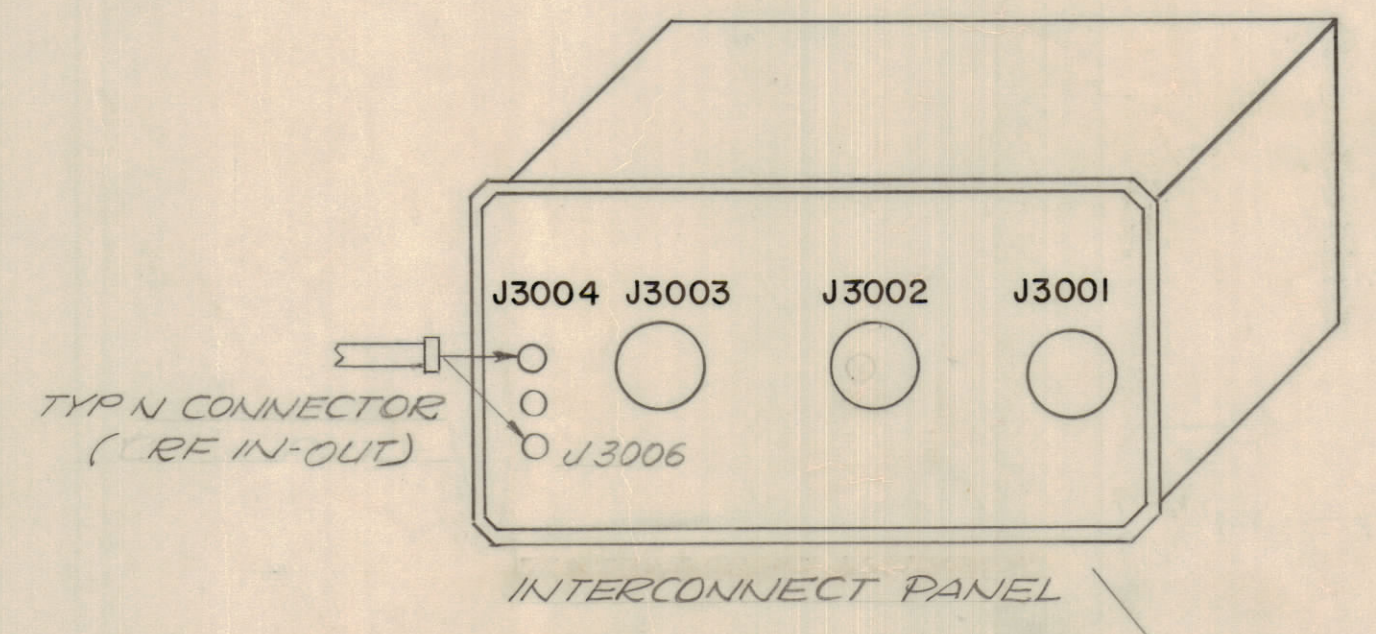


REVISIONS							
E.M.N.O	DRAFT	CHKD	ZONE	LTR	DESCRIPTION	DATE	APPROVED
	CD			Ø	ORIGINAL RELEASE FOR PRODUCTION	3/5/71	[Signature]

NOTE:
CAN BE MOUNTED
DIFFERENT ANGLES



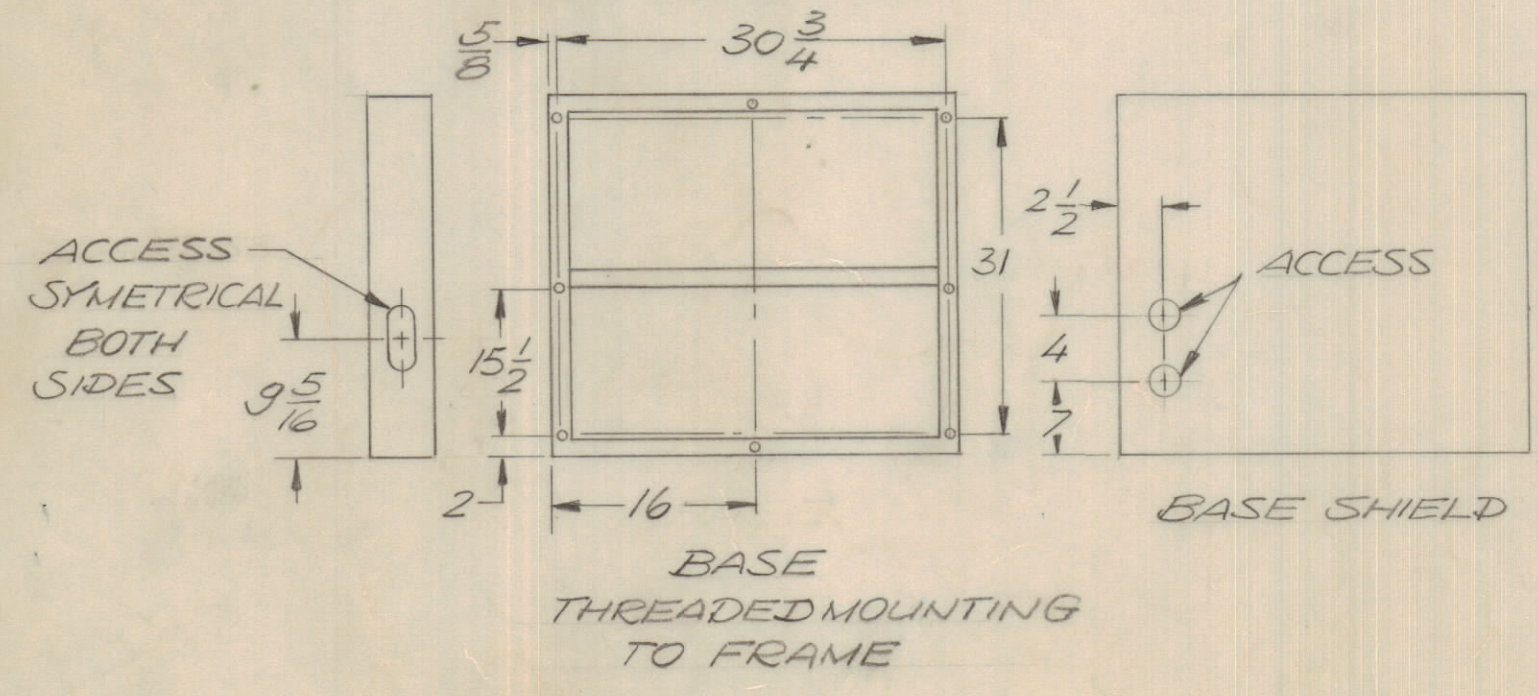
CABLE FOR J3001 MS - 3106A32-7P		
PIN	CONDUTORS	FUNCTION
e	CNDCTR(1)	ALDC
s	SHLD	



POWER REQUIMENTS

POWER INPUT	70A / 30A PER LEG
VOLTAGE	220/380 V AC
PHASE	3 Ø
FREQUENCY	50HZ ± 5%
HEAT DISSIPATION	10KW
TEMP RANGE	0-50 °C
WEIGHT	1200 LBS

DIMENSIONS FOR
POWER BOX ARE
APPROXIMATE



DRAWN TRACED CHECKED APPROVED ENG. R DATE PROJ. APPROVED DATE / /		PAGE EUROPA S.p.A. ROME ITALY
TRANSMITTING SET, RADIO HFTM-IOKJ & HFTM-IOKJS INSTALLATION DIAGRAM		
REPLACE DRWG. N°	DATE	DRAWING NUMBER ID 382
REPLACED BY DRWG N°	DATE	SCALES NONE
PORTUGAL NATO	SECRETARIADO DA DEFESA NACIONAL C.E.I.-OTAN	ARQUIVO CEOME DES N° FOLHA DE SUBSTITUE O N° SUBSTITUIDO PELO N°
SYM 1200		CLASSIF DE SEGURANÇA
CONFERIDO	/ /	
APROVADO	/ /	

REVISIONS							
E.M.N.O.	DRAFT	CHKD	ZONE	LTR	DESCRIPTION	DATE	APPROVED
	(U)			Ø	ORIGINAL RELEASE FOR PRODUCTION	3/5/71	G.S.B.

EXTERNAL TRANSMITTER CONTROL CONNECTIONS

NOTE: WHEN OPERATING TRANSMITTER, THE CONNECTION LISTED BELOW MUST BE MADE TO ENABLE TRANSMITTER OPERATION. (IF CONTROLS ARE NOT DESIRED TO BE OPERATED REMOTELY).

1. CONNECT JUMPER FROM PIN "P" TO PIN "R" ON J3002 (PTT)
2. CONNECT JUMPER FROM PIN "L" TO PIN "H" ON J3002 (EXTERNAL INTERLOCKS, COM.-N.O.).
3. CONNECT JUMPER FROM PIN "Y" TO PIN "S" ON J3003 (HIGH VOLTAGE ON/OFF GROUND).
4. CONNECT JUMPER FROM PIN "h" TO PIN "d" ON J3003 (OVERLOAD RESET).

J3001 AUDIO INTELLIGENCE KEY LINES ETC. FOR EXCITER MMX ENTER THE TRANSMITTER THRU P/O J3001

- PIN f EXC PTT
- PIN k EXC PTT
- PIN M USB 600Ω
- PIN T SHIELD
- PIN N USB 600Ω
- PIN g LSB 600Ω
- PIN V SHIELD
- PIN b LSB 600Ω
- PIN U KEY
- PIN a KEY
- PIN z FSK -
- PIN o SHIELD
- PIN y FSK +
- PIN p FAX (SHIELD)
- PIN w FAX
- PIN r CONTACT KEYING (SHIELD)
- PIN x CONTACT KEYING

CONNECTIONS FOR REMOTE PATCH PANEL ETC.

RF PATCHING

THE REMOTE RF PATCH PANEL IS CONNECTED TO J3004 "RF IN" AND J3006 "RF OUT".

ALDC PATCHING

THE REMOTE ALDC PATCH PANEL IS CONNECTED TO PIN "L" AND "e" OF J3001.

EXTERNAL IMC STANDARD

IF EXTERNAL IMC STANDARD IS USED THE CONNECTION HAS TO BE MADE TO J3005 "EXT STD". S108 IN BACK OF MMX ("EXT INT" STANDARD SWITCH) HAS TO BE IN "EXT" POSITION.

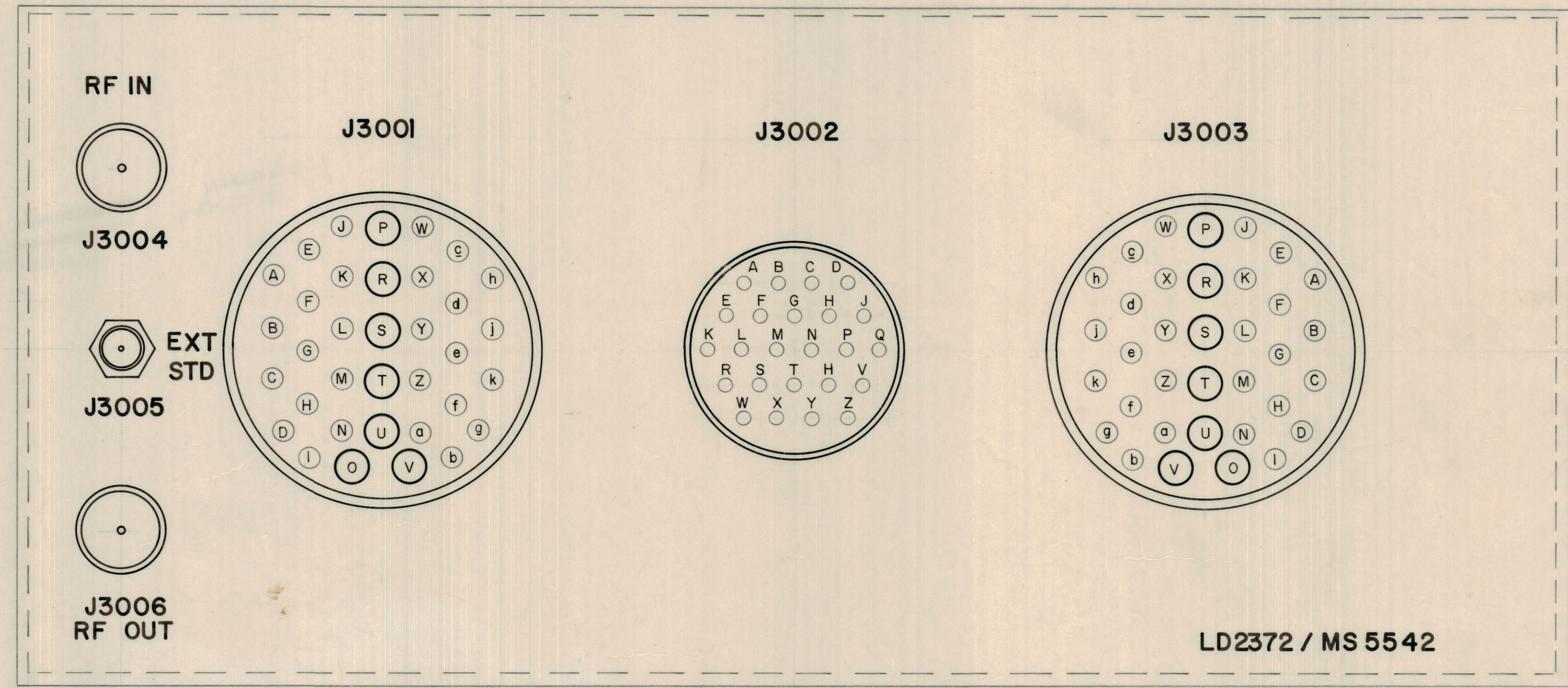
NOTE: CONNECT P1001 IN DRIVER DRAWER TO J1005 "REM." TO ENABLE RF PATCHING

J3002

- PIN A N.O.
- PIN B COM RCVR MUTE
- PIN C N.C.
- PIN D REMOTE METER COIL (GND HAS TO BE SUPPLIED BY REMOTE PATCH PANEL)
- PIN E FORWARD POWER
- PIN F REFLECTED POWER CONTROLLED BY REMOTE METER RELAY
- PIN P XMTR PTT
- PIN R XMTR PTT (GND) OPERATES PTT RELAY LOCATED IN DRIVER DRAWER
- PIN L COM
- PIN M N.C. EXTERNAL INTERLOCK
- PIN N N.O.

NOTE: THE CONNECTION LISTED BELOW MUST BE MADE IF REMOTE PATCH PANEL IS NOT USED TO ENABLE RF DRIVE AND ALDC OPERATION

1. CONNECT JUMPER FROM PIN "L" TO PIN "e" ON J3001 (ALDC).
2. CONNECT P1001 IN THE DRIVER DRAWER TO J1006 "LOC".



DRAWN <i>GE</i>	PAGE EUROPA S.p.A. ROME ITALY	
TRACED		
CHECKED <i>col. 6.</i>	TRANSMITTER SET. RADIO HFTM-10KJ & HFTM-10KJS INSTALLATION DIAGRAM	
APPROVED ENG. R <i>G.S.B.</i>		
DATE <i>3/5/71</i>		
PROJ. APPROVED		
DATE <i>3/5/71</i>		
REPLACE DRWG. N°	DATE	DRAWING NUMBER ID 382
REPLACED BY DRWG N°	DATE	SCALES
		SHEET 2 OF 3
PORTUGAL	SECRETARIADO DA DEFESA NACIONAL	ARQUIVO CEOME DES N°
NATO	CEI-OTAN	FOLHA DE
VIII:XXI SLICES	SYM1200	SUBSTITUÍDO PELO N°
CONFERIDO <i>3/5/71</i>	CLASSIF. DE SEGURANÇA	
APROVADO <i>3/5/71</i>		

REVISIONS						DATE	APPROVED
E.M.N.O.	DRAFT	CHKD	ZONE	LTR	DESCRIPTION		
	①			Ø	ORIGINAL RELEASE FOR PRODUCTION	3/9/71	P.E.A.

SHADED CABLES
DENOTE CUSTOMER LINES

230 VAC 3Ø
TO TRANSMITTER

TO 380 VAC 3Ø INPUT OF
TRANSFORMER

230 VAC
CONNECTION

END COVER

TRANSFORMER

ON

RESET

FUSE

TRIP

END COVER

GROUND
24 VDC
REMOTE TRIP
LINE
(CUSTOMER)

380 VAC 3Ø
(CUSTOMER LINE)
WIRING TO COME FROM UNDER COVER

D

D

C

C

B

B

A

A

DRAWN G. EVANGELIST		PAGE EUROPA S.p.A. ROME ITALY	
TRACED		PE	
CHECKED		TRANSMITTING SET RADIO HFTM-10KJ& HFTM-10KJS INSTALLATION DIAGRAM	
APPROVED ENG R		DATE	
DATE		DRAWING NUMBER ID 382	
REPLACE DRWG. N°		DATE	
REPLACED BY DRWG N°		SCALES NONE	
SHEET 3		OF 3	
PORTUGAL	SECRETARIADO DA DEFESA	NACIONAL	ARQUIVO GEOME DES N°
NATO	CEI-OTAN	C.E.O.M.E.	FOLHA DE
VIII LXI SLICES		SYM 1200	
CONFERIDO		CLASSIF DE SEGURANCA	
APROVADO			