

NOTES:

- 1 SEE DWG. D237701 UTILITY TOWER BASE DETAIL
- 2 SEE DWG. D237702 UTILITY TOWER TOP DETAIL.
- 3 SEE DWG. D237703 FOR DETAIL OF UTILITY TOWER TOP GUYS.
- 4 SEE DWG. B237704 UTILITY TOWER INSULATOR STANDOFF BRACKET. SPACING DIMENSIONS ARE APPROXIMATE
- 5 FIRST INSULATOR ON TOP 3 GUYS 114' FROM TOWER ATTACHMENT POINT.
- 6 LOCATION OF GUY INSULATOR TO CONFORM WITH TOWER MFR'S ON BOTTOM TWO GUYS.
- 7 SEE DWG. D237705 TOP LOAD SUPPORT.
- 8 SEE DWG. D237707 BOTTOM LOAD SUPPORT.
- 9 DIMENSIONS ON GUYING SYSTEMS ARE ESTIMATED FOR DRAWING PURPOSES ONLY. FOLLOW MANUFACTURER'S RECOMMENDATION FOR ACTUAL LAYOUT AND TENSIONING. 114' DIMENSION ON TOP GUYS SHOULD BE MAINTAINED FOR ELECTRICAL REASONS.

NOTE: WHERE INDICATED BY ASTERICK, HARDWARE ITEMS HAVE SOME OVERAGE

REVISIONS				
ZONE	SYM.	DESCRIPTION	DATE	APPROVAL
-	A	REMOVE #5 REF FROM TOWER CHANGED NUMBER OF 3/8 CLIPS TO 7 CHANGED NUMBER OF 3/8 SHACKLE TO 2 CHANGE NUMBER OF U-BOLTS TO 40	10-18-66	[Signature]
	B	ADDED NOTE 9. U-BOLTS WERE 3/16". UPDATED LIST OF MATERIAL.	10-27-66	[Signature]
C2	C	3/4 SHACKLE WAS 2 REQ	11/7/66	[Signature]

3/8" E.H.S. GUY WIRE	25'	BETHLEHEM	
3/8" WIRE ROPE CLIPS, DROP FORGED GALV. STEEL	72	CROSBY	
3/8" THIMBLES, GALV. STEEL	7	BETHLEHEM	
3/8" PREFORMED GUY GRIPS	* 9	PREFORMED	
502 INSULATORS	* 12	LOCKE	
TOP SUPPORT BRACKET	1	MULTRONICS	D237705
BOTTOM SUPPORT BRACKET	1	MULTRONICS	D237707
SPRING, COMPENSATION	1	UNITED SPRING CO.	LINE DOCK NO. 2
INSULATOR STANDOFF BRACKET ASSEMBLY	6	MULTRONICS	B237.704
24" INSULATOR	1	MULTRONICS	
3/4" SHACKLE, DROP FORGED, CLASS A GALV.	3	BETHLEHEM	
STRAIN CLAMP	1	LINE MATERIAL	
INSULATOR TO STRAIN CLAMP ADPT	1	MULTRONICS	B237708
7#11 ALUMOWELD WIRE	175'	COPPERWELD	
1/4" WIRE ROPE CLIPS	* 4		
1/4" CLOSED THIMBLES, GALV. STEEL	* 1		
ELECT. CONNECTOR FOR ALUMOWELD WIRE	EACH	MULTRONICS	C237709-1
ELECT. CONNECTOR FOR 3/8 GUY WIRE	EACH	MULTRONICS	C237709-2
ADPT ALUMOWELD WIRE TO ATU#2 INSULATOR	1	MULTRONICS	B237710
U-BOLTS 3/8" x 2 1/2" x 4" GALV. STEEL (CLASS A) W/3/8-16 NC THREAD, NUT & FLAT WASHERS	40		
BOLT, HEX HD. S.S. 5/8" x 1 1/2" -18NF	4		
NUTS, HEX 5/8" 11NC-2A	4		
WASHER, 5/8"	8		
DESCRIPTION	REQD.	MANUFACTURER	DRAWING NO.

UNLESS OTHERWISE SPECIFIED DIMENSIONS ARE IN INCHES		SIGNATURE	DATE
TOLERANCES ON:	DEC. FRACT. ANG. RMS. FIN.	DR. C.B.	9-13-66
MATERIAL:		CHK. P.WELLER	9-15-66
FINISH:		ENGR. P.V.C.	9-15-66
USED ON	NEXT ASSY.	PROJ. APPD.	

OVERALL ASSEMBLY

T.M.C. KIT # 312 FOR UTILITY TOWER TYPE '170K.D.'

THE TECHNICAL MATERIAL CORP.
700 FENIMORE ROAD
MAMARONECK, N. Y.

ID379

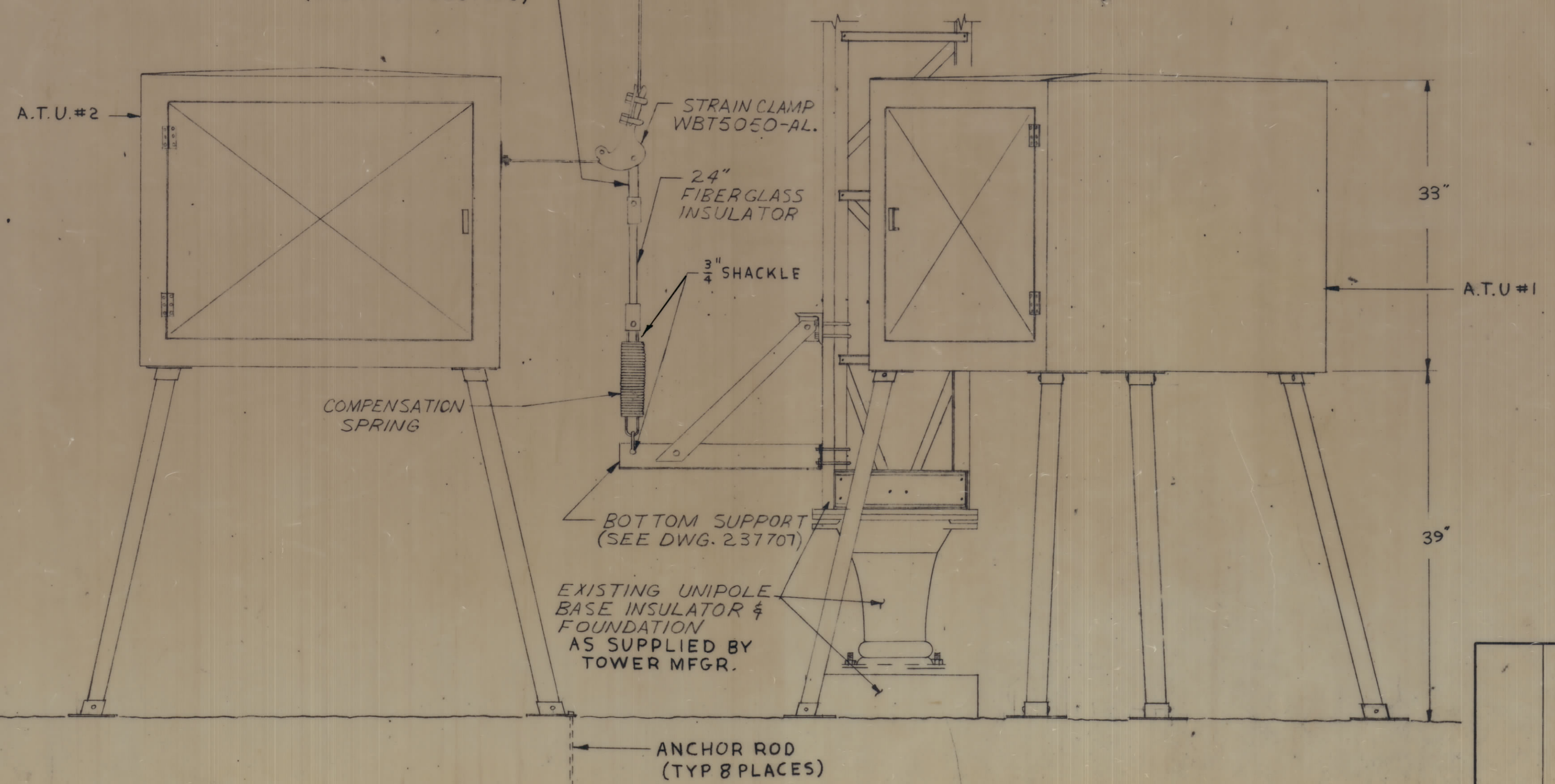
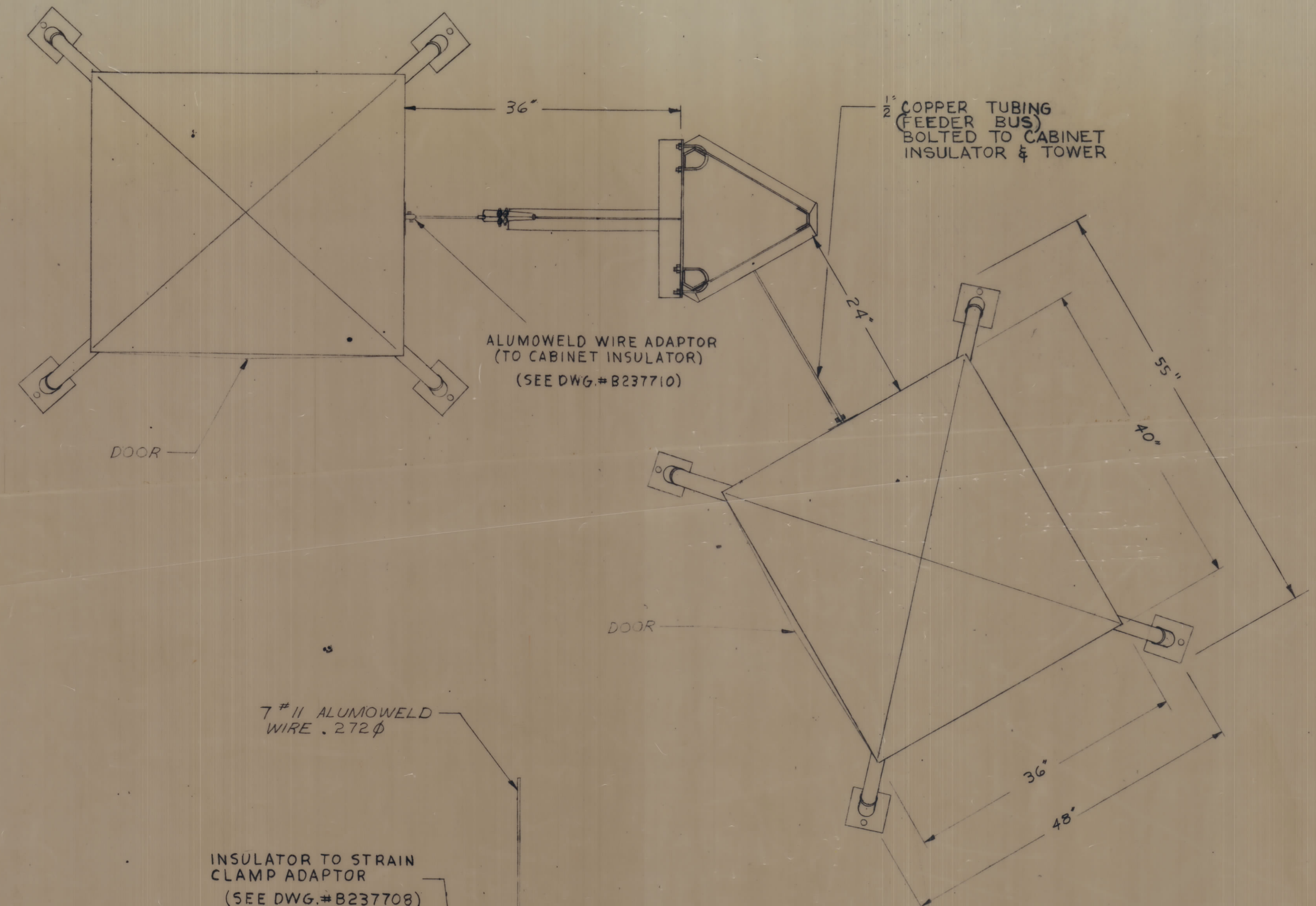
D237700

SCALE: NONE

JOB # 237-7

SHEET 1 OF 4

REVISIONS				
ZONE	SYM.	DESCRIPTION	DATE	APPROVAL



NOTE
 COMPENSATION SPRING TO BE EXTENDED 6" AT INSTALLATION.

REQD.	PART NO.	ITEM	DESCRIPTION	MATL. OR MFR.	MATL. SPEC. OR CAT. NO.	QTY. SYM.	UNIT WT.	ZONE
LIST OF MATERIAL								
UNLESS OTHERWISE SPECIFIED			SIGNATURE	DATE				
DIMENSIONS ARE IN INCHES			DR. C.B.	9/2/66				
TOLERANCES ON:		RMS. FIN.	CHK. <i>R. Miller</i>	7-15-66				
DEC. FRACT. ANG.			ENGR. <i>P. V. Co.</i>	9/15/66				
MATERIAL:								
FINISH:								
USED ON		NEXT ASSY.	PROJ. APPD.		SCALE: NONE	JOB # 287-7		

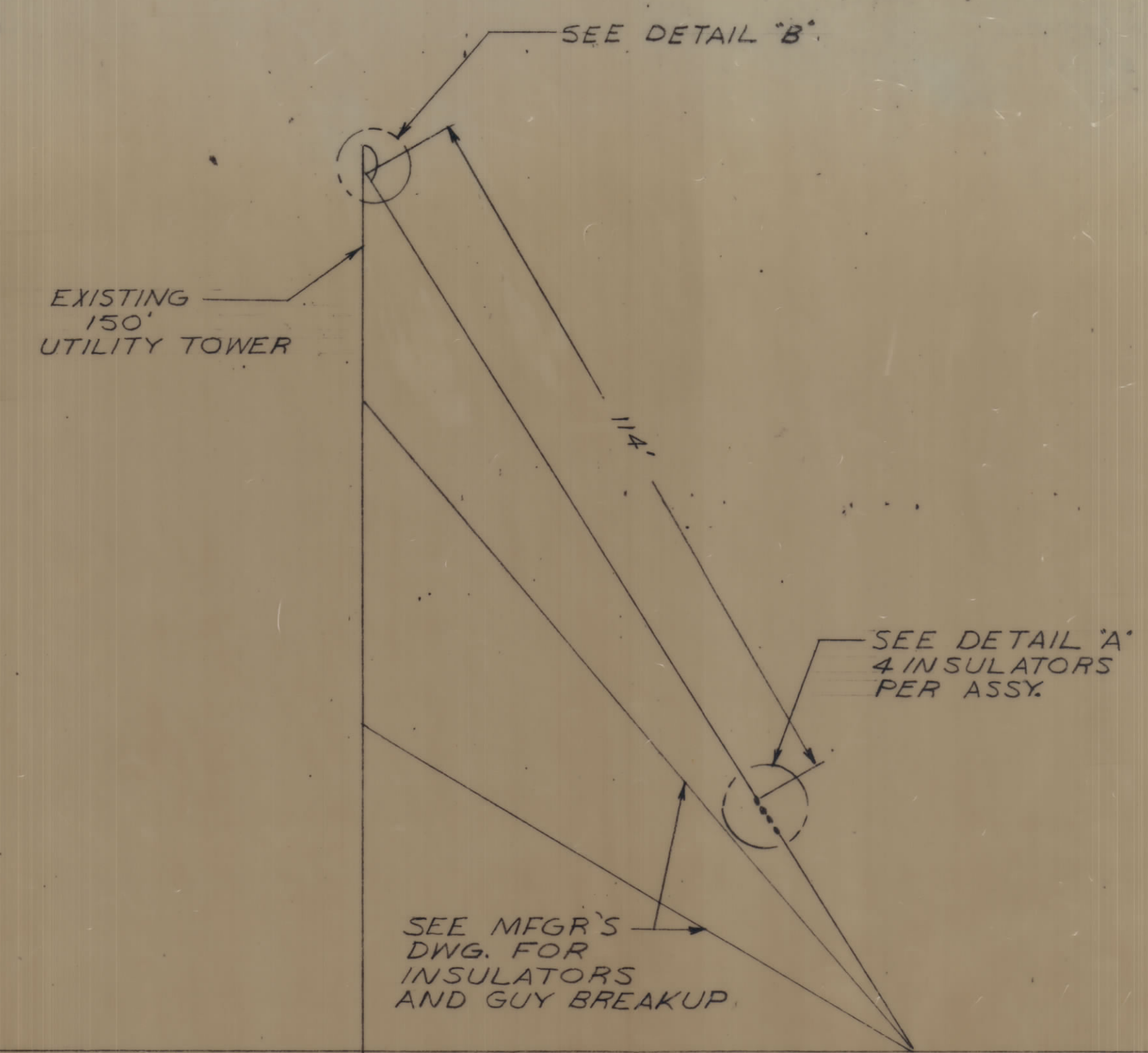
BASE DETAIL
 T.M.C. KIT #312
 FOR UTILITY TOWER
 TYPE "170K.D."

THE TECHNICAL MATERIE CORP.
 700 FENIMORE ROAD
 MAMARONECK, N. Y.
ID 379
 D237701
 SHEET 2 OF 4

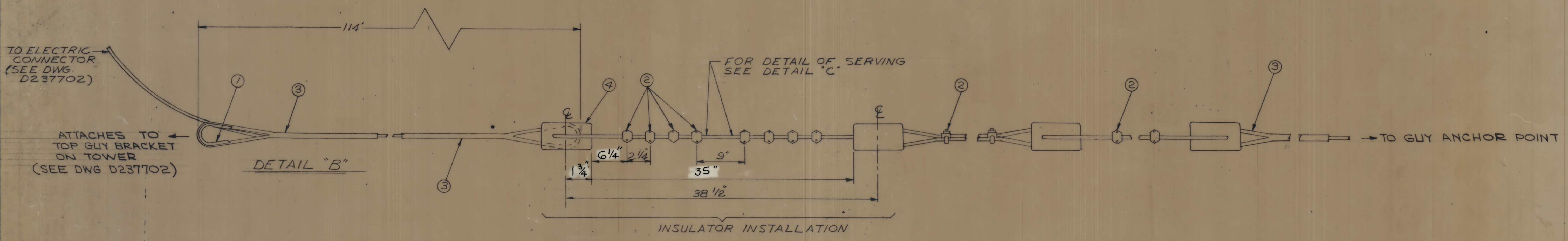
REVISIONS				
ZONE	SYM.	DESCRIPTION	DATE	APPROVAL
G4	A	CHANGED INSULATORS FROM 504 TO 502	10-18 66	<i>[Signature]</i>
E7	A	CHANGED PLAN VIEW TO ELEVATION	66	
C7	B	DIM. ON INSUL. REVISED	11/7/66	<i>[Signature]</i>

TABLE 1
HARDWARE

1	2	3	4
THIMBLE	CABLE CLIP	PREFORMED CABLE GRIP	INSULATOR
3/8"	3/8"	3/8"	LOCKE 502

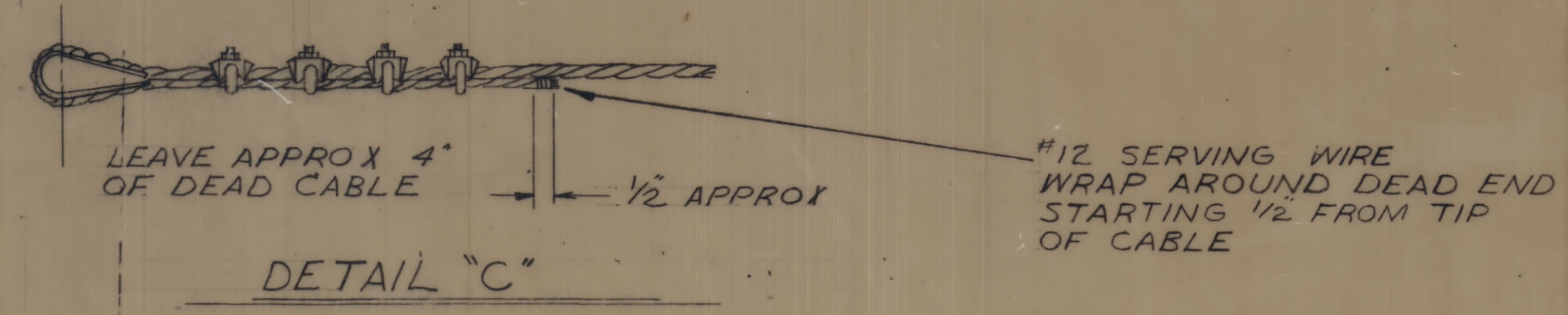


ELEVATION OF STRUCTURAL GUYING



SPACE CABLE CLIPS 2 1/4" APART (U-BOLT SHALL BEAR ON DEAD END.)

DETAIL "A"
SEE TABLE 1 FOR HARDWARE DATA



REQD.	PART NO.	ITEM	DESCRIPTION	MATL. OR MFR.	MATL. SPEC. OR CAT. NO.	CKT. SYM.	UNIT WT.	ZONE
LIST OF MATERIAL								
UNLESS OTHERWISE SPECIFIED			SIGNATURE		DATE		TOP LOADING GUY DETAIL T.M.C. KIT # 312 FOR UTILITY TOWER TYPE "170K.D."	
DIMENSIONS ARE IN INCHES			DR. C.B.		9-12-66			
TOLERANCES ON:			CHK. P. WELLER		9-13-66			
DEC. FRACT. ANG. RMS. FIN.			ENGR. P.V.G.		9-15-66			
MATERIAL:			FINISH:		PROJ. APPD.		THE TECHNICAL MATERIEL CORP. 700 FENIMORE ROAD MAMARONECK, N. Y. ID 379 D237703 SHEET 4 OF 4	
D237700			NEXT ASSY.		SCALE: NONE		JOB # 237-7	