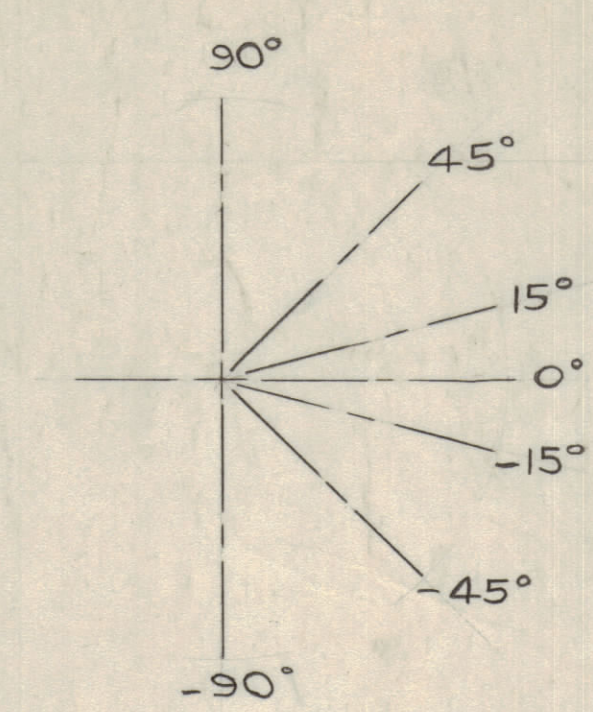


REVISIONS						
ZONE	LTR	DESCRIPTION	DATE	E.M.N.NO	DRAFT	CHKD
	X1	UPDATED TO 2-18-70 SUBMISSION	2-24-70			
	Ø	ORIGINAL RELEASE FOR PRODUCTION	4/15/70			
	A	SEE SHEET 4 OF 6	7/16/70	139445	RH	pg.
	B	SEE SHEET 5 OF 6	10/5/70	20015	GE	1600



DETAIL 'A'
SERVICING POSITIONS
APPLICABLE ALL RACKS

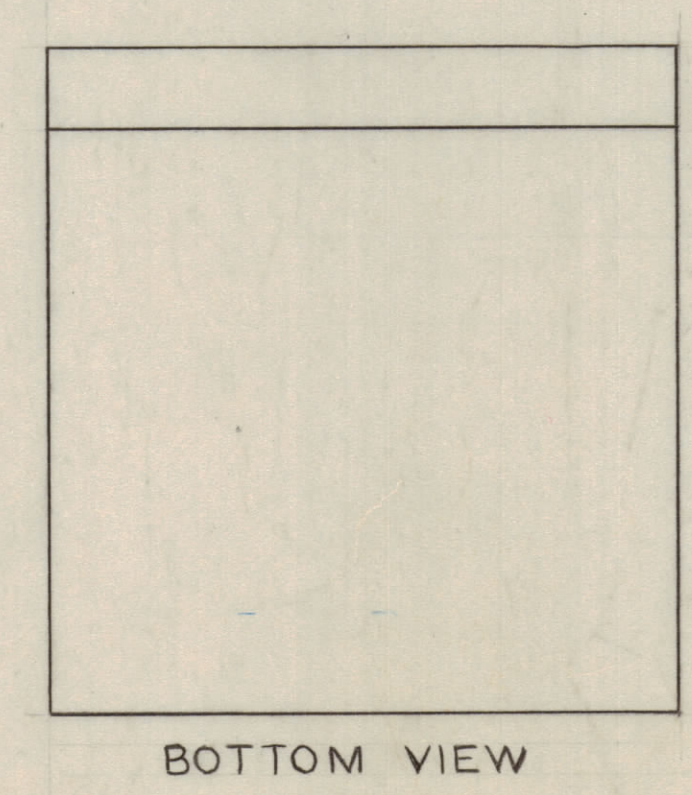
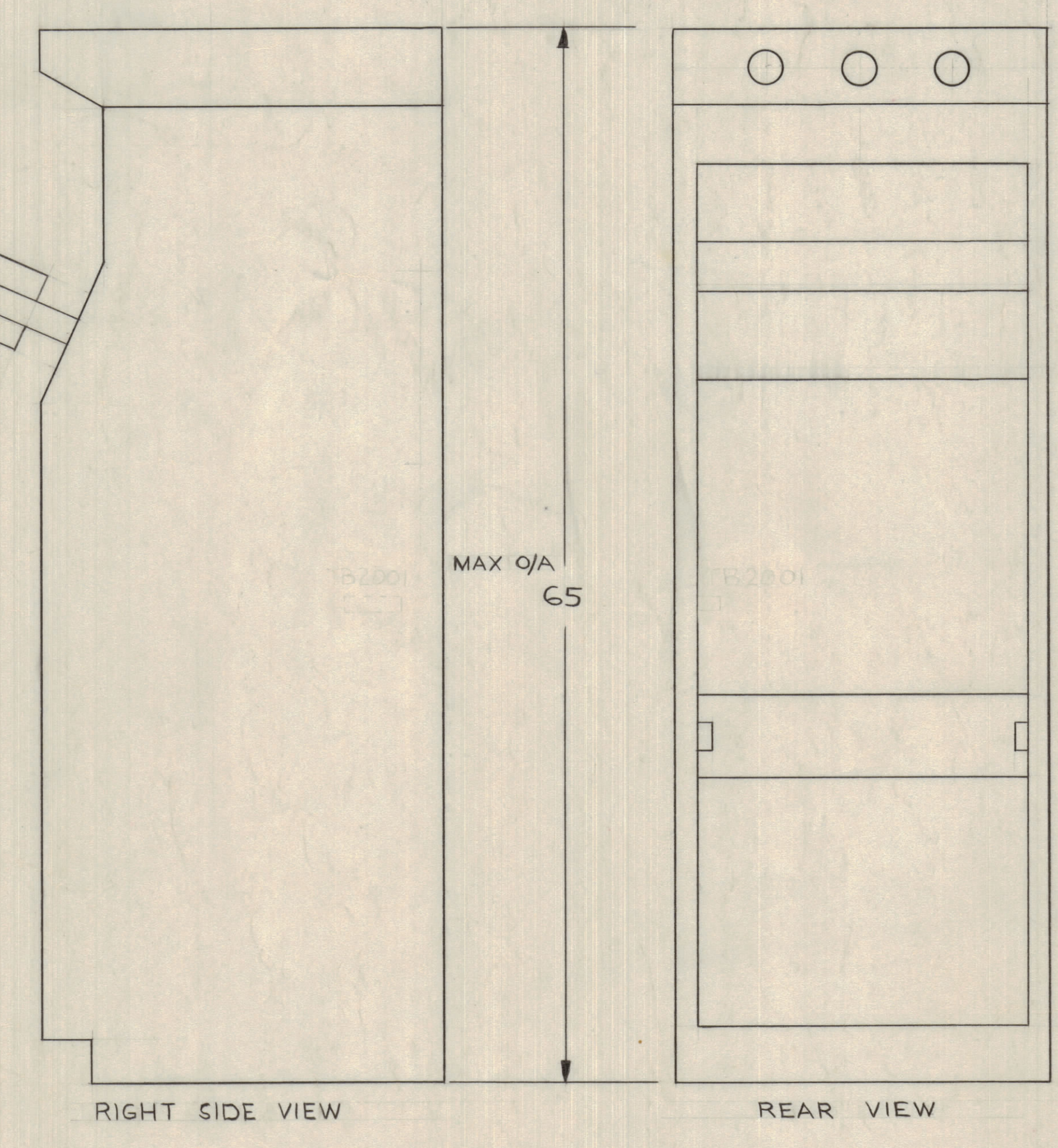
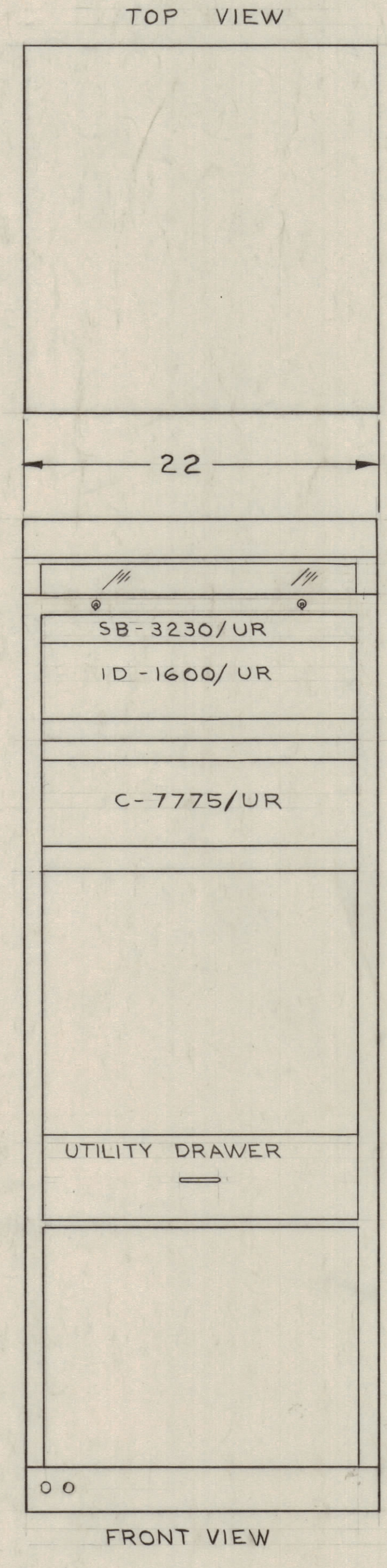
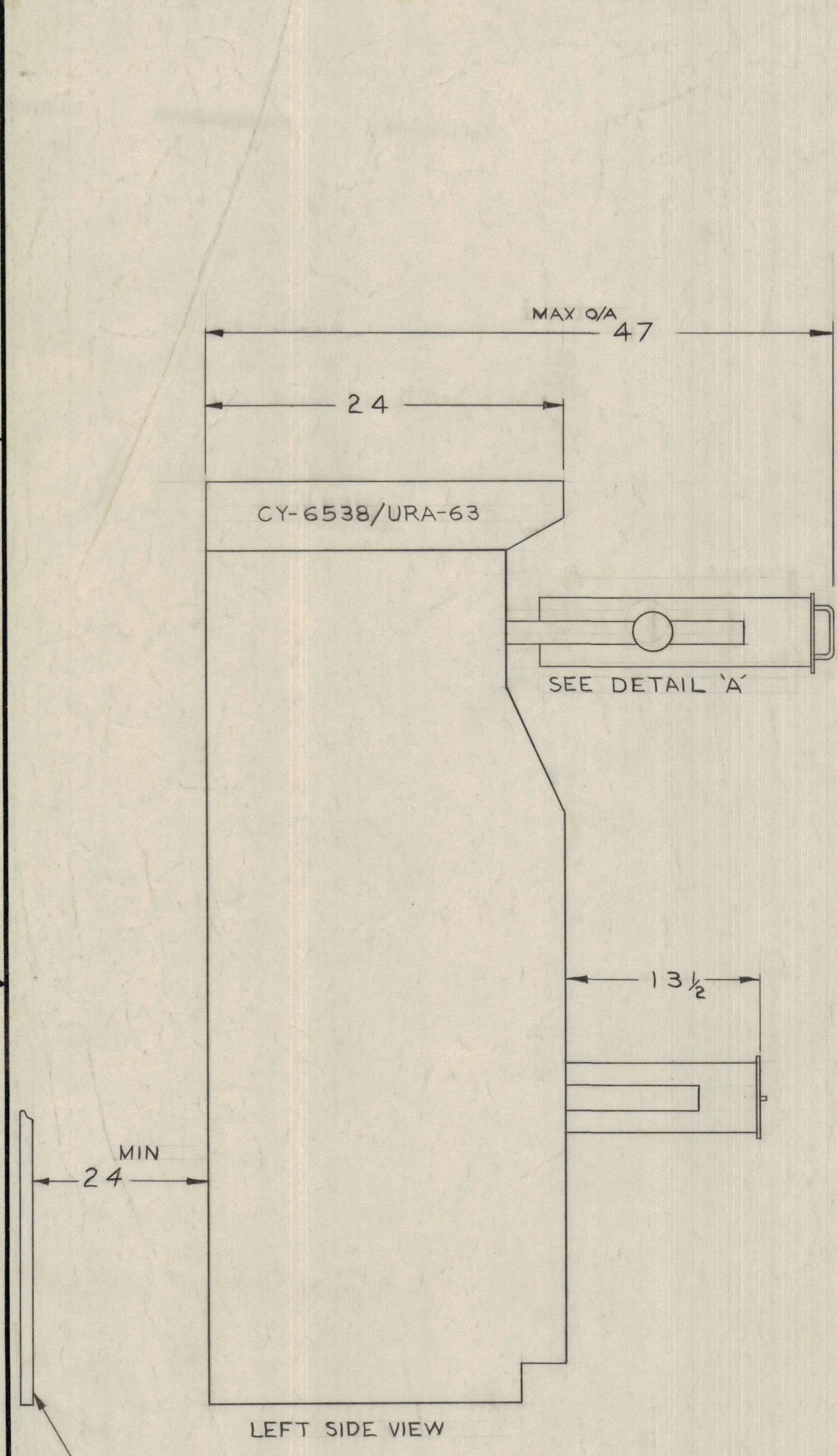
UNIT DATA

POWER REQ'D	168 WATTS
HEAT DISSIPATION	5.73 BTU/HR
TEMP RANGE	0°-50° C
WEIGHT	193 LBS
CUBIC AREA	18 CU FT
CRATED CU AREA	

CRATED DIMENSIONS

CONT NO.	L	W	H	CU AREA	WT
1	72	29	32 5/8	39.4 FT	435
2	36	26 3/4	34 3/4	19.4 FT	219

CONTRACT No. N600(63133)65805
NOTE: DRAWING IN ACCORDANCE WITH
MIL-D-23410(SHIPS) DATED 17 JAN 1962.



QTY / UNIT	MODEL USED ON	ASS'Y NO.
	COPD-2	0100 033
APPLICATION		
	CODE	
NOTICE TO PERSONS RECEIVING THIS DRAWING		
<small>THE TECHNICAL MATERIEL CORPORATION claims proprietary right in the material disclosed hereon. This drawing is issued in confidence for engineering information only and may not be reproduced or used to manufacture anything shown herein without permission from THE TECHNICAL MATERIEL CORPORATION to the user. This drawing is loaned for mutual assistance and is subject to recall at any time.</small>		

QTY. REQ.	ITEM	PART NO.	DESCRIPTION	SYMBOL
LIST OF MATERIAL				
UNLESS OTHERWISE SPECIFIED DIMENSIONS ARE IN INCHES AND INCLUDE CHEMICALLY APPLIED OR PLATED FINISHES		FINAL APPROVAL DATE MECH. DES. DATE ELECT. DES. DATE CHECKED DATE DRAWN DATE	THE TECHNICAL MATERIEL CORP. MAMARONECK, NEW YORK CONSOLE, REMOTE CONTROL AN/URA - 63 OUTLINE & MOUNTING DIMENSIONS	
DECIMALS X ± .05 .XX ± .01 .XXX ± .005		FRACTIONS ± 1/64 ANGLES ± 0°-30'		SIZE CODE IDENT. NO. DWG NO. ISSUE D 82679 ID 377 B
MATERIAL			SCALE NONE SHEET 3 OF	
FINISH				

47%
v-v