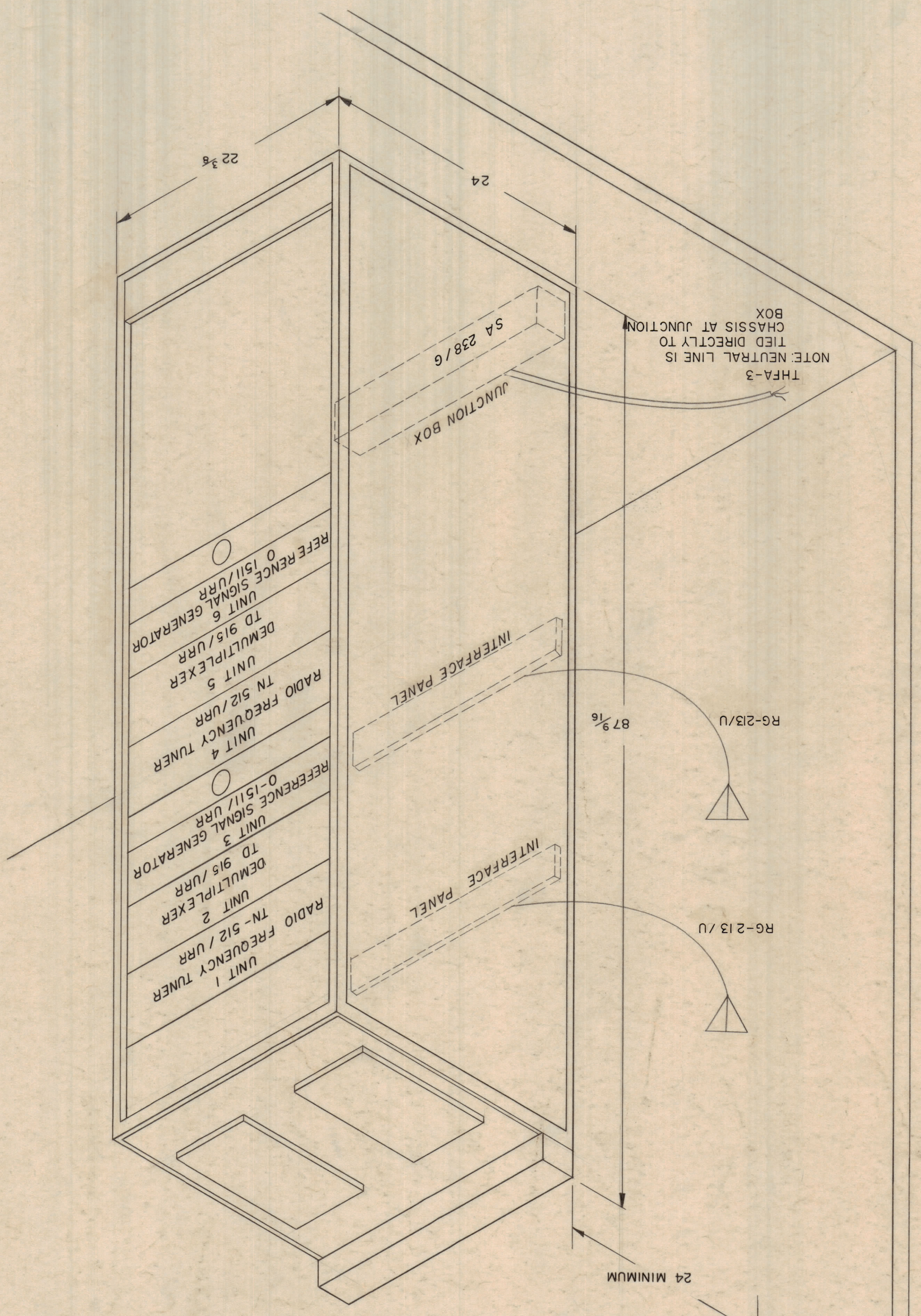


| ZONE | LTR | DESCRIPTION | DATE | E.M.N. | NO | DRAFT | CHKD | APPD |
|------|-----|---------------------------------|---------|--------|----|-------|------|------|
| | | UPDATED TO 2-18-70 submission | 2-18-70 | | | | | |
| | | ORIGINAL RELEASE FOR PRODUCTION | 4/1/70 | | | | | |
| | | ADDED SIGNAL TO JUNCTION BOX | 9/30/69 | | | | | |
| | | CHG UNIT 2 & 5 FR TDR 1-21-71 | 1-21-71 | | | | | |

REVISIONS

POWER REQUIREMENTS
 VOLTAGE—120VAC ± 10%
 PHASE—SINGLE
 FREQUENCY—50/60 ± 5%
 WATTS—360



| QTY / UNIT | MODEL USED ON | ASSY. NO. |
|------------|---------------|-----------|
| DBR-10M | | |

| DECIMALS | FRACTIONS | CHECKED | DATE |
|-------------|-----------|---------|------|
| XX ± .01 | ± 1/64 | | |
| X ± .05 | ± 1/32 | | |
| .XXX ± .005 | ± 0.30 | | |

| DRAWN | DATE |
|-----------|----------|
| Dzel'mein | 11/14/69 |

| DATE | FINAL APPROVAL | MECH. DES. | DATE | ELECT. DES. | DATE |
|---------|----------------|------------|------|-------------|------|
| 4-13-70 | | | | | |

| QTY | REQ. ITEM | PART NO. | DESCRIPTION | SYMBOL |
|-----|-----------|----------|-------------|--------|
| | | | | |

| DATE | FINAL APPROVAL | MECH. DES. | DATE | ELECT. DES. | DATE |
|---------|----------------|------------|------|-------------|------|
| 4-13-70 | | | | | |

| UNLESS OTHERWISE SPECIFIED DIMENSIONS ARE IN INCHES AND INCLUDE CHEMICALLY APPLIED OR PLATED FINISHES |
|---|
| TOLERANCES ON |
| FRACCTIONS |
| ± 1/64 |
| ± .05 |
| ± .01 |
| ± .005 |

| FINISH |
|--------|
| |

| NOTE TO PERSONS RECEIVING THIS DRAWING |
|--|
| THE TECHNICAL MATERIEL CORPORATION claims proprietary right in the materiel disclosed hereon. This drawing is issued in confidence for engineering information only and may not be reproduced or used to manufacture anything shown hereon without permission from THE TECHNICAL MATERIEL CORPORATION. |

| SIZE | CODE IDENT. NO. | DWG. NO. | SCALE | NONE |
|------|-----------------|----------|-------|------|
| D | 82679 | ID 375 | | |

| ISSUE | DATE |
|-------|------|
| B | |

NOTE: INTERCONNECTION DIAGRAM (SHT 4 & 5) SUPERCEDED AND DIRECTLY REPLACED BY CK 1624

RECEIVING SET, RADIO
 AN/URR-64(V)
 PICTORIAL SYSTEM DIAGRAM

THE TECHNICAL MATERIEL CORP.
 MAMARONECK, NEW YORK

| ITEM NUMBER | QUANTITY | NOMEN CLATURE | PART, TYPE OR MODEL NUMBER | MANUFACTURERS NAME OR FEDERAL SUPPLY CODE | SIZE | | | | |
|---------------|----------|-----------------------------|----------------------------|---|--------|--------|-------|-------|-------|
| | | | | | LENGTH | HEIGHT | WIDTH | | |
| 1 | 2 | TUNER, RADIO FREQUENCY | TN-512/URR | | | | 19.38 | 7 | 19 |
| 2 | 2 | DEMULTIPLIER | TD-914/URR | | | | 19 | 7 | 19 |
| 3 | 2 | GENERATOR, REFERENCE SIGNAL | 0-1511/URR | | | | 18.5 | 5.25 | 19 |
| 4 | 1 | INTRA-UNIT CABLING | SEE DWG NO CK1624 | | | | | | |
| 5 | 1 | CABINET, RELAY RACK | MODIFIED CY-597A/G | | | | 24 | 87.56 | 22.38 |
| 6 | 2 | CABLE, RF COAXIAL | RG213/U | | | | | | |
| 7 | 2 | CABLE | TRS-4 | | | | | | |
| 8 | 2 | CABLE, RF COAXIAL | RG-58/U | | | | | | |
| 9 | 2 | CABLE | TRS-2(1) | | | | | | |
| 10 | 1 | CABLE, AC POWER | THA-3 | | | | | | |
| 11 | 1 | CABLE | | | | | | | |
| 12 | 1 | CABLE, RF COAXIAL | RG-58/U | | | | | | |
| 13 | 1 | BLANK PANELS SET | P/O UNIT 8 | | | | | | |
| 14 | 1 | GROUNDING STRAP | WL100-1 #10 AWG | | | | | | |
| 15 | 36 | SCREW, MACHINE | SCBP1932BN8 | | | | | | |
| 16 | 36 | WASHER, FIBER | WA101-11 | | | | | | |
| 17 (NOT USED) | | | | | | | | | |
| 18 | 2 | CONNECTOR, PLUG COAXIAL | UG-536/U | | | | | | |
| 19 | 2 | CONNECTOR, PLUG | MS3106B24-28P | | | | | | |
| 20 | 1 | CONNECTOR, PLUG COAXIAL | UG-88C | | | | | | |
| 21 | 2 | CONNECTOR, PLUG | MS3106B14S-2P | | | | | | |
| 22 | 2 | CONNECTOR, PLUG TELEPHONE | PJ055 | | | | | | |

CONTRACT NO.: N600(63133)65805
 NOTE: DRAWING IN ACCORDANCE WITH MIL-D-23410(SHIPS)
 DATED 17 JANUARY 1962

| APPLICATION | |
|---------------|----------|
| QTY / UNIT | 0100 014 |
| MODEL USED ON | DPR-10M |
| ASS'Y NO. | |

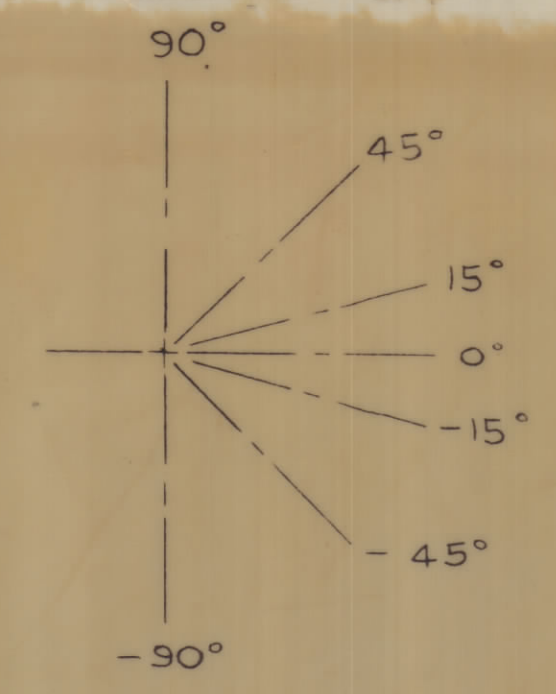
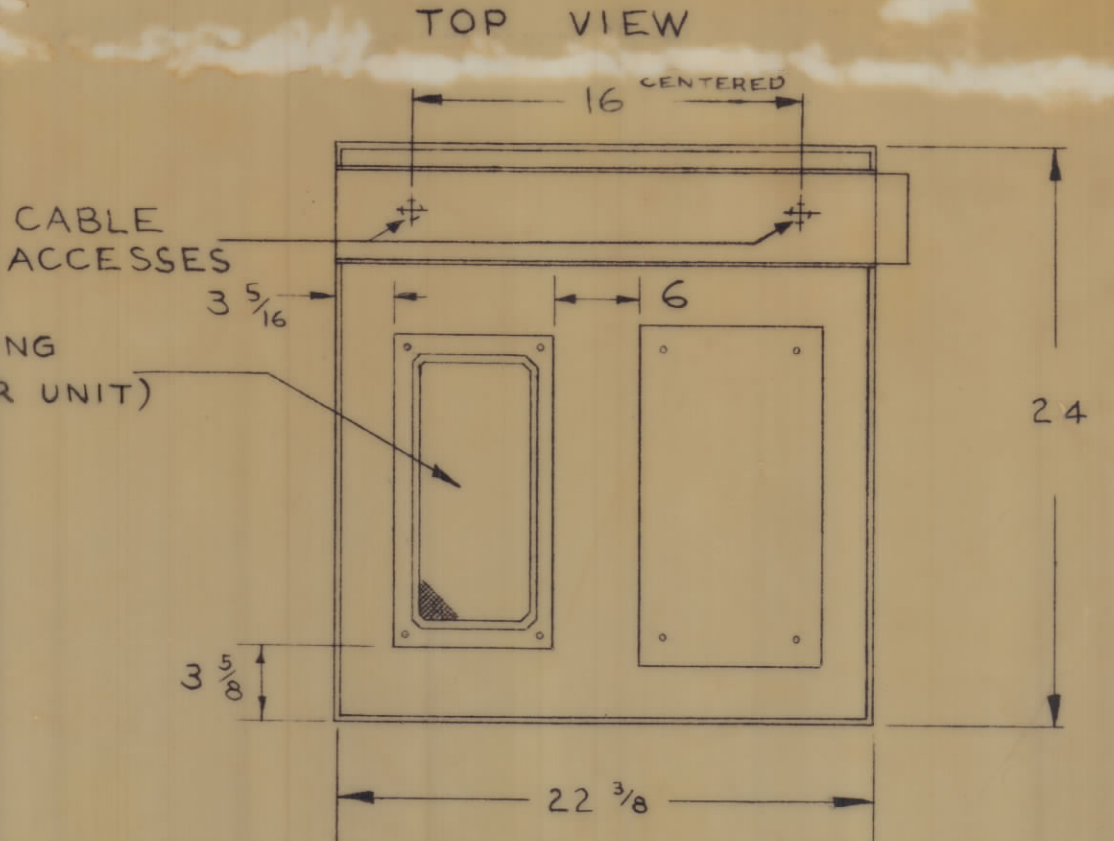
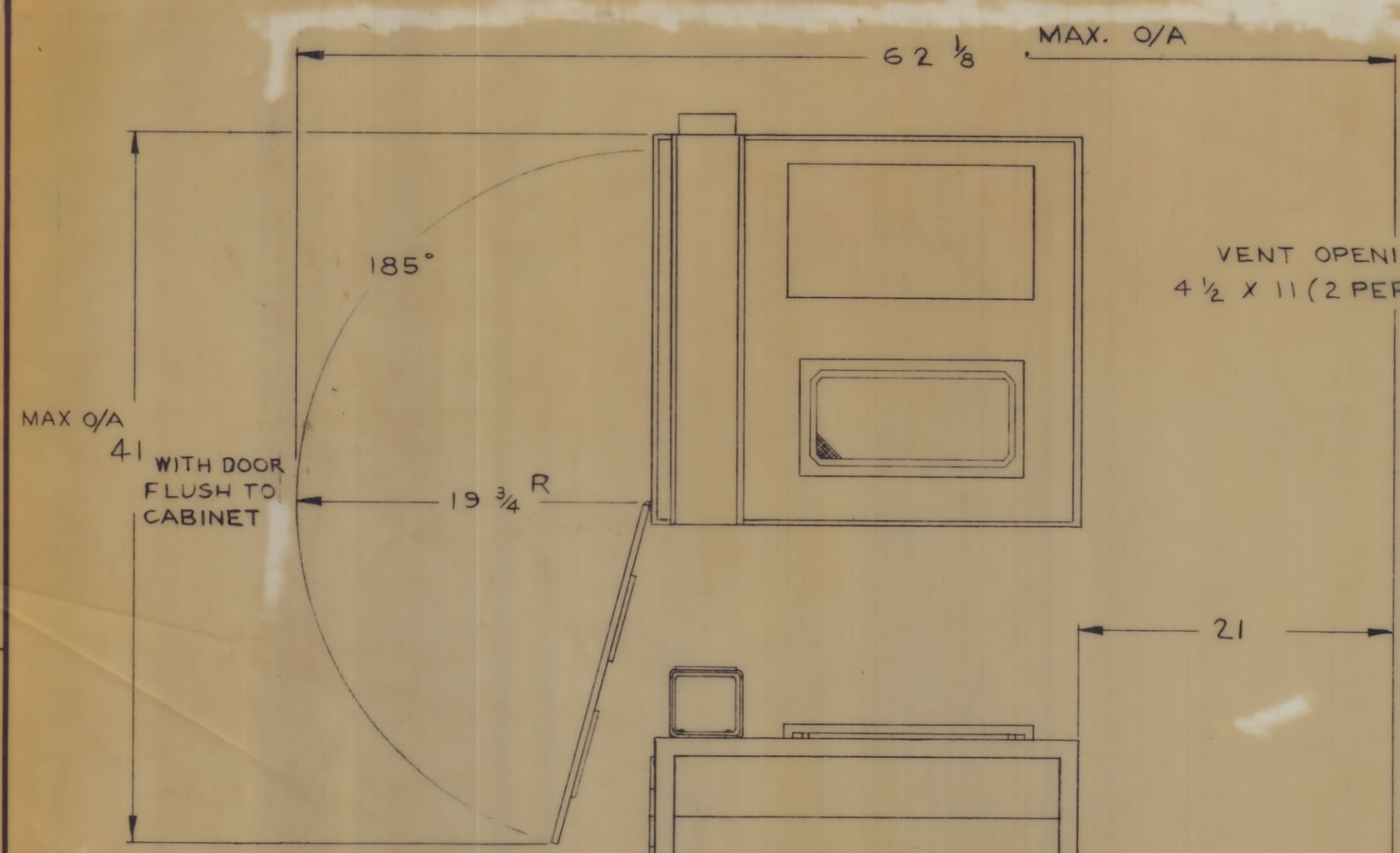
| MATERIAL | |
|--|---------------------------------|
| UNLESS OTHERWISE SPECIFIED DIMENSIONS ARE IN INCHES OR PLATED FINISHES | FINAL APPROVAL DATE: 4/13/70 |
| TOLERANCES ON DECIMALS FRACTIONS | ELECT. DES. DATE: 7/12/70 |
| XXX ± .005 XX ± .01 X ± .05 ± 1/64 | CHECKED DATE: 7/12/70 |
| ANGLES = 0°-30' | DRAWN DATE: 11/17/69 |
| FINISH | DATE: 11/17/69 |

| QTY. | REQ. ITEM | PART NO. | DESCRIPTION | SYMBOL |
|--|----------------|----------|-------------|--------|
| LIST OF MATERIAL | | | | |
| THE TECHNICAL MATERIEL CORP. MAMARONECK, NEW YORK | | | | |
| RECEIVING SET, RADIO AN/URR 64(V) | | | | |
| SUMMARY LIST OF INSTALLATION MATERIAL | | | | |
| SIZE | CODE IDENT NO. | DWG NO. | ISSUE | |
| D | 82679 | ID 375 | B | |

SCALE: SHEET 2 OF 7

| REV. | DATE | DESCRIPTION | APPROVED |
|------|---------|---------------------------------|----------|
| 1 | 3-13-70 | OPERATED TO 2-18-70 SUBMISSION | KD |
| 2 | 4-13-70 | ORIGINAL RELEASE FOR PRODUCTION | CM |
| 3 | 7-30-70 | SEE SHT 1 OF 20205 R7 | CM |

| | | REVISIONS | | | | | |
|------|-----|---------------------------------|---------|----------|-------|------|------|
| ZONE | LTR | DESCRIPTION | DATE | E.M.N.NO | DRAFT | CHKD | APPD |
| X | | UPDATED TO 2-18-70 SUBMISSION | 2-20-70 | | KID | | |
| Ø | | ORIGINAL RELEASE FOR PRODUCTION | 4/13/70 | | Q | | |
| A | | SEE SHEET 7 | 1/29/70 | 19997 | | | |
| B | | SEE SHT 1 OF 7 | 12-71 | 20205 | RZ | | |

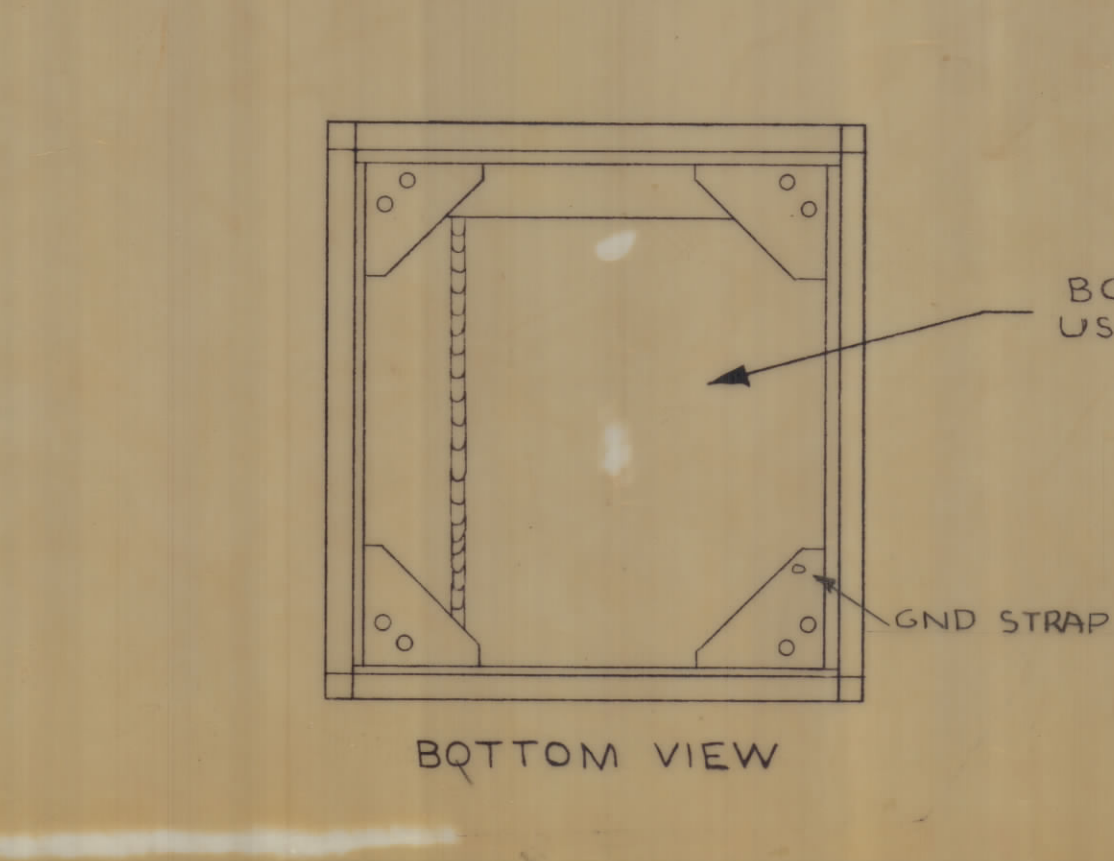
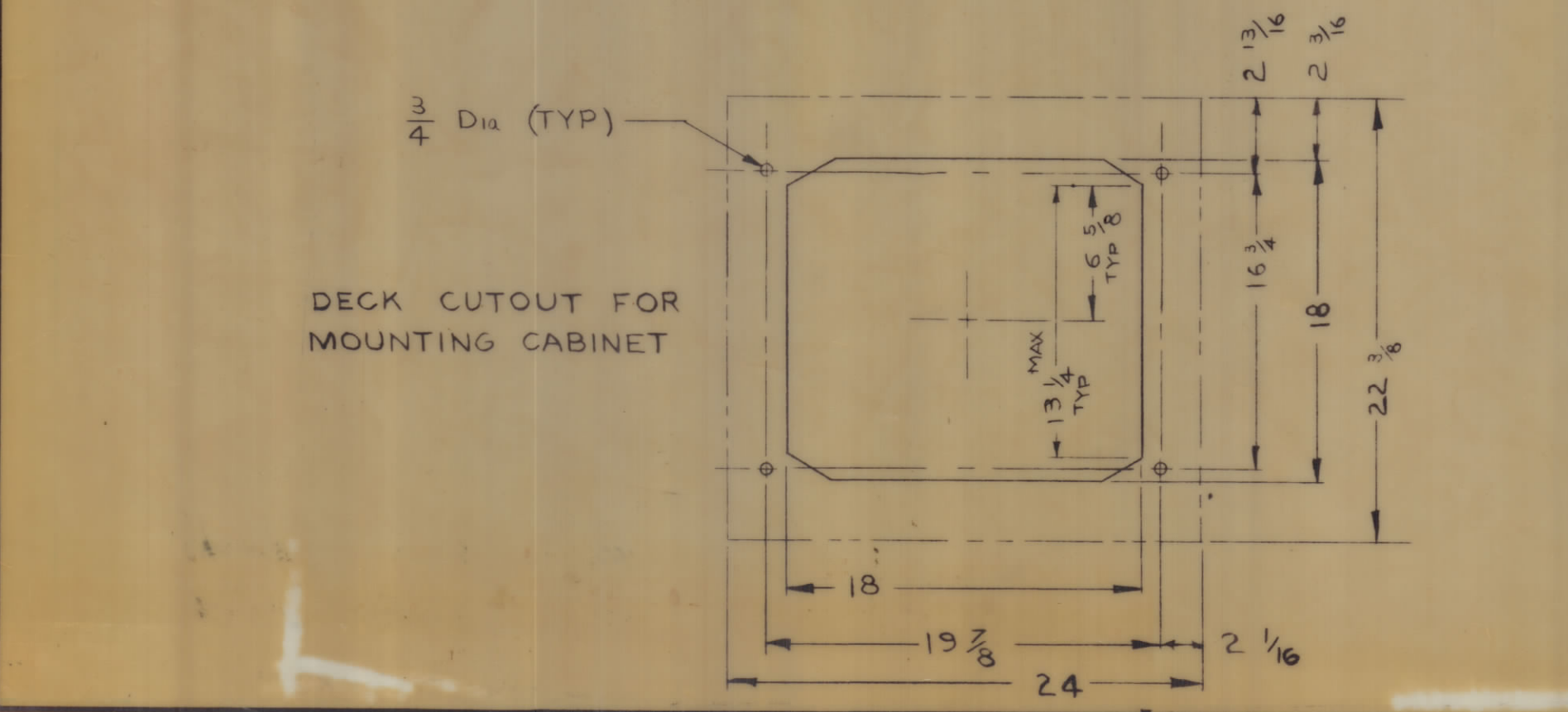
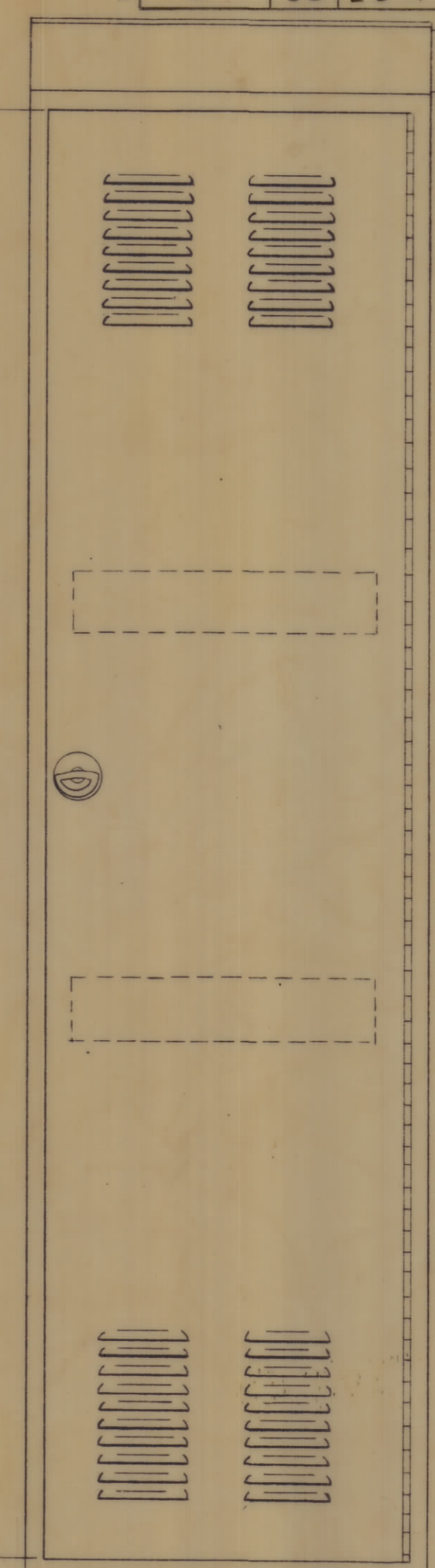
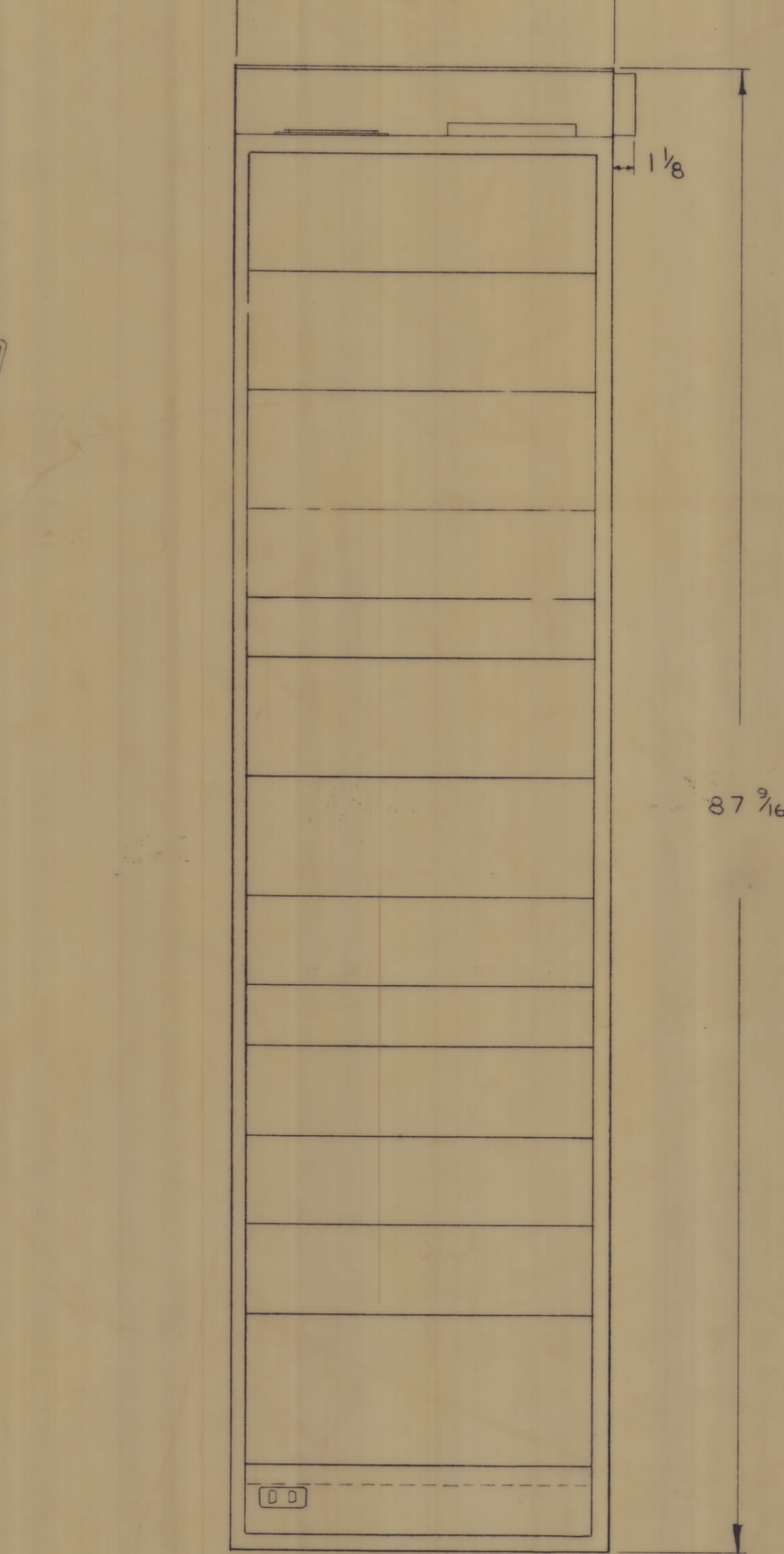
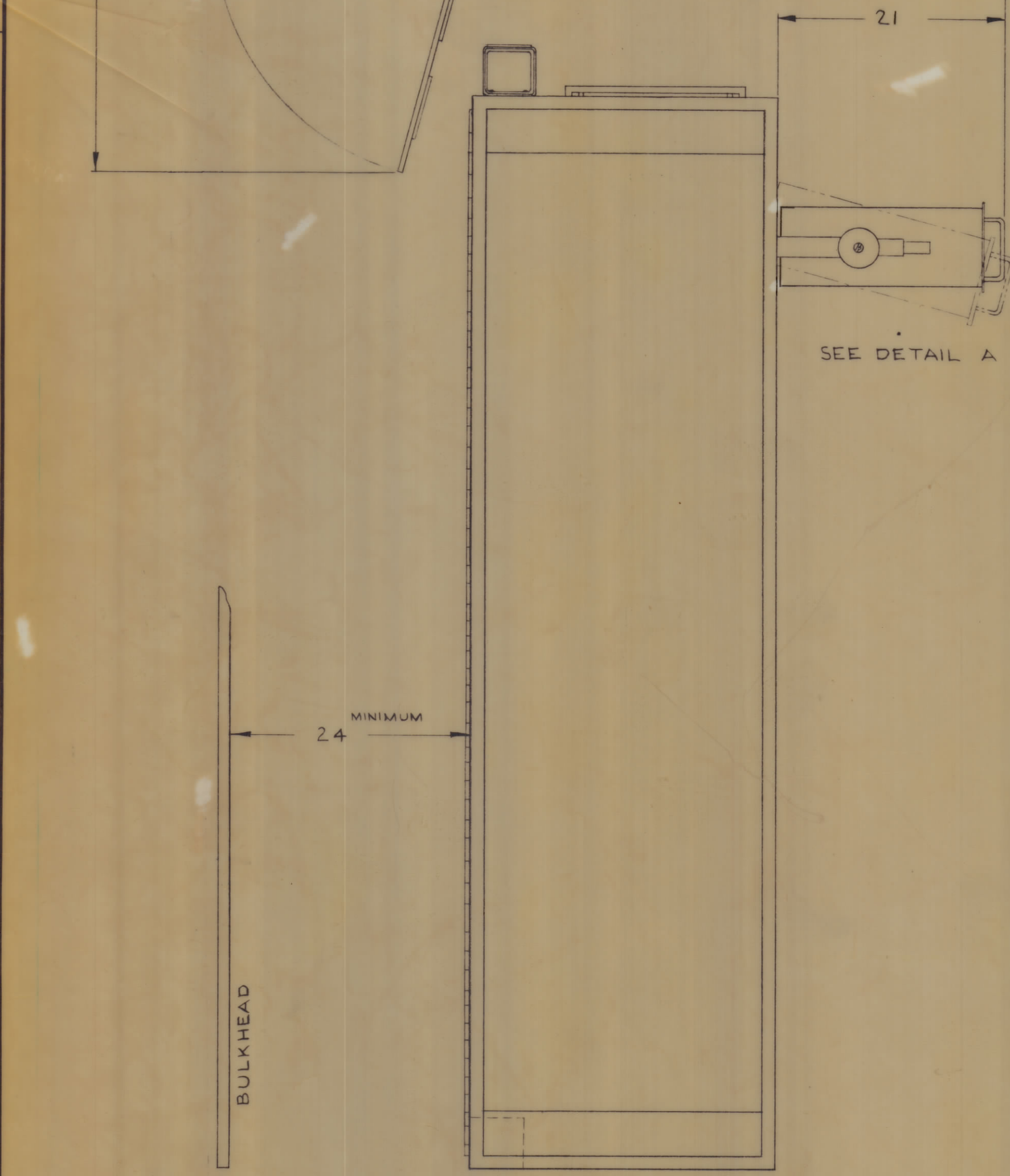


DETAIL A
SERVICING POSITIONS
APPLICABLE ALL RACKS

CRATED DIMENSIONS

| CNTNR | L | W | H | CU AREA | WT |
|-------|----|--------|--------|---------|-----|
| 1 | 92 | 31 | 31 1/8 | 51.4 FT | 514 |
| 2 | 36 | 26 3/4 | 34 3/4 | 19.4 FT | 250 |
| 3 | 36 | 26 3/4 | 34 3/4 | 19.4 FT | 250 |

UNIT DATA
POWER REQ — 360 WATTS
HEAT DISSIPATION — 1230 BTU/HR
TEMP. RANGE — 0°-50° C
WEIGHT — 491 LBS
CUBIC AREA — 20.2'



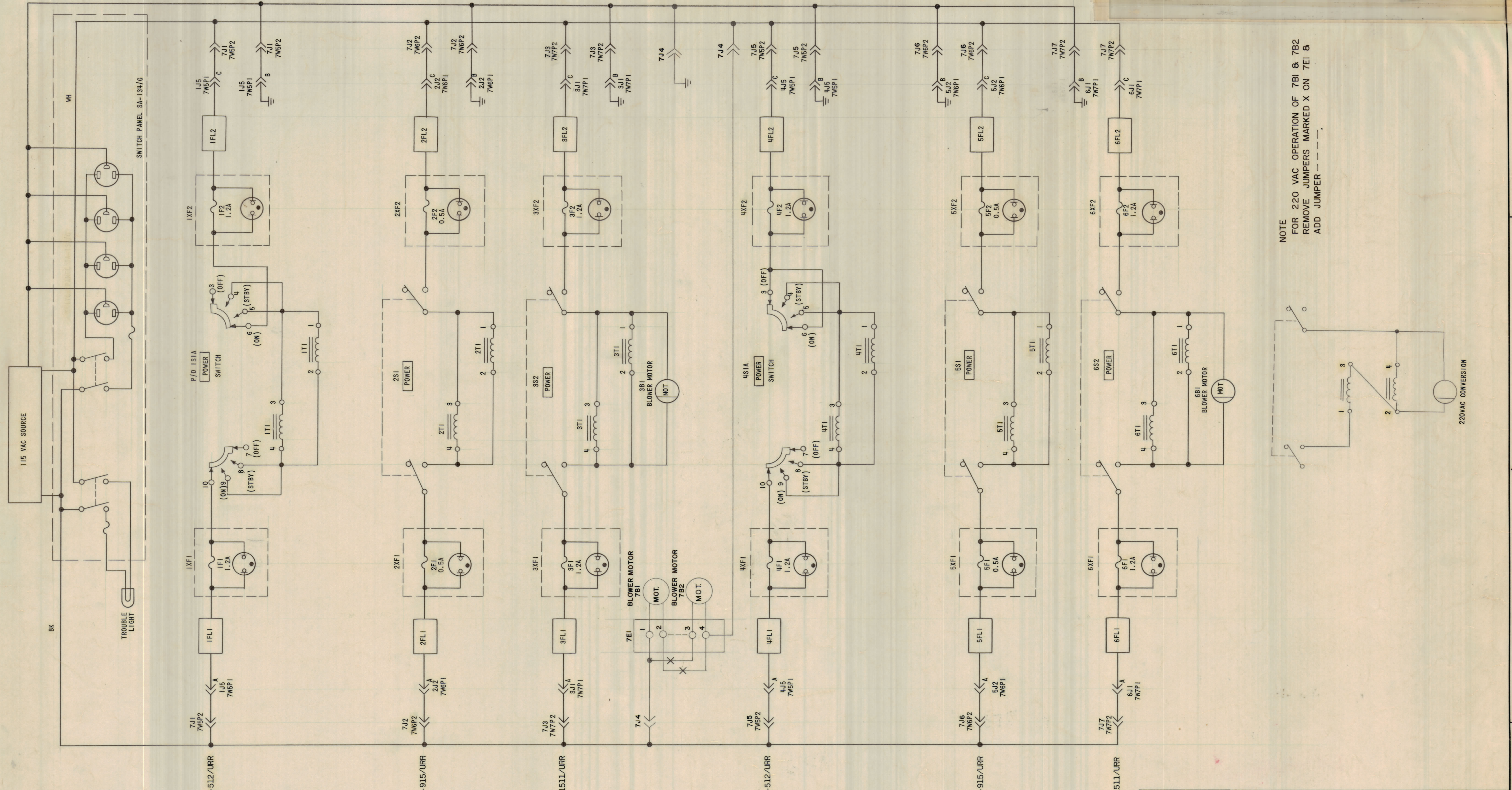
BOTTOM OPEN
USE FOR CABLE ACCESS

GND STRAP LUG

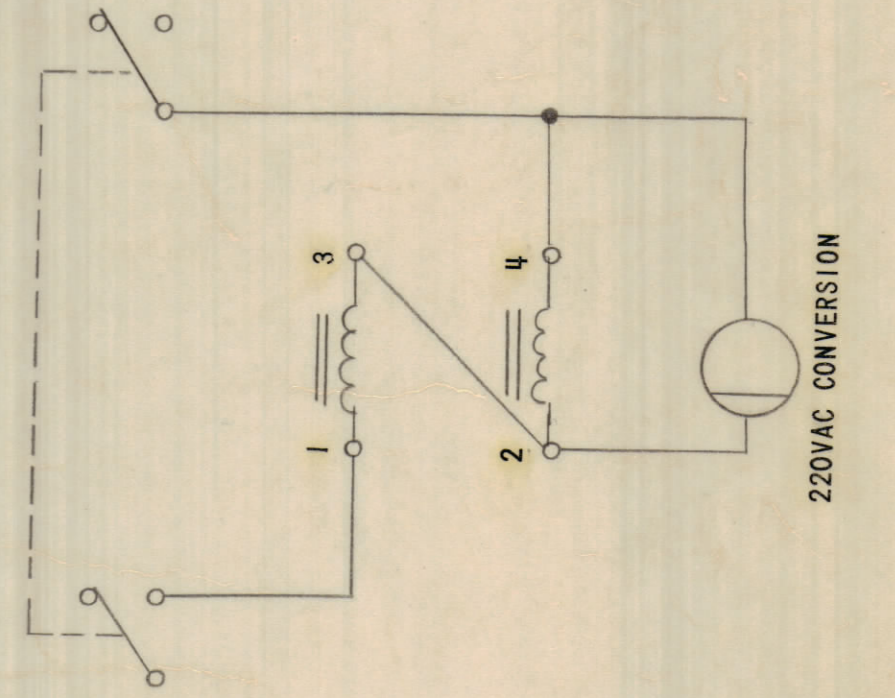
| | | |
|---|---------------|-----------|
| QTY / UNIT | MODEL USED ON | ASS'Y NO. |
| | DPR-10M | Q100 015 |
| APPLICATION | | |
| CODE | | |
| NOTICE TO PERSONS RECEIVING THIS DRAWING | | |
| THE TECHNICAL MATERIEL CORPORATION claims proprietary right in the material disclosed herein. This drawing is issued in confidence for engineering information only and may not be reproduced or used to manufacture anything shown herein without permission from THE TECHNICAL MATERIEL CORPORATION to the user. This drawing is loaned for mutual assistance and is subject to recall at any time. | | |

| QTY. REQ. | ITEM | PART NO. | DESCRIPTION | SYMBOL |
|--|-----------------|----------|-------------|------------|
| LIST OF MATERIAL | | | | |
| THE TECHNICAL MATERIEL CORP. MAMARONECK, NEW YORK | | | | |
| RECEIVING SET, RADIO AN/URR 64(V)1 | | | | |
| OUTLINE & MOUNTING DIMENSIONS | | | | |
| SIZE | CODE IDENT. NO. | DWG NO. | ISSUE | |
| D | 82679 | ID 375 | B | |
| SCALE NONE | | | | SHEET 3 OF |

ID 375



NOTE
FOR 220 VAC OPERATION OF 7B1 & 7B2
REMOVE JUMPERS MARKED X ON 7E1 &
ADD JUMPER -----



| ZONE | LTR | DESCRIPTION | DATE | E.M.N.O | DRAFT | CHKD | APPD |
|------|-----|---|---------|---------|-------|------|------|
| B | | SEE SHT 1 OF 7 | 1-21-71 | 20205 | | | |
| A | | UPDATED ORIGINAL RELEASE FOR PRODUCTION | 3/13/70 | | | | |
| X | | UPDATED | 3/13/70 | | | | |

| | | |
|-------------|---------------|-----------|
| QTY / UNIT | MODEL USED ON | ASS'Y NO. |
| | DDR-10M | 0100 018 |
| APPLICATION | | |
| CODE | | |

UNLESS OTHERWISE SPECIFIED DIMENSIONS ARE IN INCHES AND INCLUDE CHEMICALLY APPLIED OR PLATED FINISHES

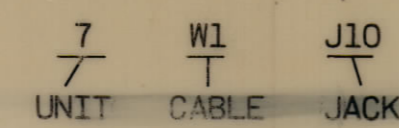
TOLERANCES ON
 DECIMALS .X ± .05
 .XX ± .01
 .XXX ± .005
 FRACTIONS 1/64
 ANGLES ± 0° - 30°

| QTY. REQ. | ITEM | PART NO. | DESCRIPTION | SYMBOL |
|------------------|------|------------------------------|----------------|---------|
| LIST OF MATERIAL | | | | |
| FINAL APPROVAL | DATE | THE TECHNICAL MATERIEL CORP. | | |
| MECH. DES. | DATE | MAMARONECK, NEW YORK | | |
| ELECT. DES. | DATE | RECEIVING SET, RADIO | | |
| CHECKED | DATE | AN/URR 64(V)1 | | |
| DRAWN | DATE | AC POWER DISTRIBUTION | | |
| MATERIAL | | SIZE | CODE IDENT NO. | DWG NO. |
| FINISH | | D | 82679 | ID 375 |
| | | SCALE | SHEET 6 OF | |

NOTICE TO PERSONS RECEIVING THIS DRAWING
 THE TECHNICAL MATERIEL CORPORATION claims proprietary right in the material disclosed herein. This drawing is issued in confidence for engineering information only and may not be reproduced or used to manufacture anything shown hereon without permission from THE TECHNICAL MATERIEL CORPORATION to the user. This drawing is loaned for mutual assistance and is subject to recall at any time.

| 8 | 7 | 6 | 5 | 4 | 3 | 2 | 1 | | | | | | | |
|-----------|------------------------|-------------------|---------------------|------------|---------------------------|-----------------------------|--|--|-----------------------------|-----------------------------|--|-----------------|---------------------|-------------|
| MFGR CODE | NAVY CABLE DESIGNATION | CABLE TYPE & SIZE | NO. OF ACTIVE CONDS | COLOR CODE | FROM | TERMINAL BOARD PLUG OR JACK | TERMINAL OR PIN DESIGNATION | TO | TERMINAL BOARD PLUG OR JACK | TERMINAL OR PIN DESIGNATION | FUNCTION | CURRENT IN AMPS | MAX ALLOW VOLT DROP | SUPPLIED BY |
| | | RG213/U | 1 | | INTERFACE PANEL RCVR "A" | 7W1J8 "ANTENNA" | | ANTENNA, RCVR "A" | | | ANTENNA INPUT RCVR "A" | | | GFM |
| | | RG213/U | 1 | | INTERFACE PANEL, RCVR "B" | 7W5J8 "ANTENNA" | | ANTENNA, RCVR "B" | | | ANTENNA INPUT RCVR "B" | | | GFM |
| | TTRS-4 | | 8 | | INTERFACE PANEL, RCVR "A" | 7W1J7 "AUDIO" | A B C D E F G H K L M N W X Y Z | AUDIO LINES RCVR "A" SYM/B2 CH LINE B1 CH LINE A1 CH LINE A2 CH LINE | | | 4-CHANNEL AUDIO OUTPUT, RCVR "A" 600Ω CT } SYM/B2 600Ω GND } 600Ω CT } B1 600Ω GND } 600Ω CT } A1 600Ω GND } 600Ω CT } A2 600Ω GND } | | | GFM |
| | TTRS-4 | | 8 | | INTERFACE PANEL, RCVR "B" | 7W5J7 "AUDIO" | A B C D E F G H K L M N W X Y Z | AUDIO LINES RCVR "B" SYM/B2 CH LINE B1 CH LINE A1 CH LINE A2 CH LINE | | | 4-CHANNEL AUDIO OUTPUT, RCVR "B" 600Ω CT } SYM/B2 600Ω GND } 600Ω CT } B1 600Ω GND } 600Ω CT } A1 600Ω GND } 600Ω CT } A2 600Ω GND } | | | GFM |
| | | RG-58/U | 1 | | INTERFACE PANEL, RCVR "A" | 7W1J10 1Mc EXT STD | | EXT 1Mc STD SOURCE | | | EXT 1Mc STD INPUT RCVR "A" | | | GFM |
| | TTRS-2 | | 2 | | INTERFACE PANEL, RCVR "A" | 7W1J5 "SPEAKER" | A B C | SPEAKER RCVR "A" | | | MONITOR SPEAKER OUTPUT, RCVR "A" AUDIO PAIR SHLD | | | GFM |
| | TTRS-2 | | 2 | | INTERFACE PANEL, RCVR "B" | 7W3J5 "SPEAKER" | A B C | SPEAKER, RCVR "B" | | | MONITOR SPEAKER OUTPUT, RCVR "B" AUDIO PAIR SHLD GND | | | GFM |
| | | RG-58/U | 1 | | INTERFACE PANEL, RCVR "B" | 7W2J10 "1Mc EXT STD" | | 1Mc EXT STD SOURCE | | | EXT 1Mc STD INPUT RCVR "B" | | | GFM |
| | THFA-3 | | 2 | | POWER SOURCE | SEE DWG NO ID375 | | JUNCTION BOX SA238G | WHT & BLK PIGTAIL | | POWER | | | GFM |
| | | RG-58/U | 1 | | INTERFACE PANEL RCVR "A" | 7W1J9 1Mc MON | | INTERFACE PANEL "B" | 7W2J10 EXT. STD. | | 1Mc STD. INTERCONNECT (OPTIONAL) | | | GFM |

LEGEND FOR REFERENCE DESIGNATIONS



CONTRACT NUMBER: N600(63133)65805

NOTE: DRAWING IN ACCORDANCE WITH MIL-D-23410 (SHIPS)
DATED 17 JANUARY 1962

| | | |
|-------------|---------------|-----------|
| QTY / UNIT | MODEL USED ON | ASS'Y NO. |
| | DDR-10M | 0100 017 |
| APPLICATION | | |
| CODE | | |

NOTICE TO PERSONS RECEIVING THIS DRAWING
THE TECHNICAL MATERIEL CORPORATION claims proprietary right in the material disclosed herein. This drawing is issued in confidence for engineering information only and may not be reproduced or used to manufacture anything shown herein without permission from THE TECHNICAL MATERIEL CORPORATION to the user. This drawing is loaned for mutual assistance and is subject to recall at any time.

| QTY. REQ. | ITEM | PART NO. | DESCRIPTION | SYMBOL |
|---|------|-----------------|-----------------------------|--|
| LIST OF MATERIAL | | | | |
| UNLESS OTHERWISE SPECIFIED DIMENSIONS ARE IN INCHES AND INCLUDE CHEMICALLY APPLIED OR PLATED FINISHES | | FINAL APPROVAL | DATE 4-15-70 | THE TECHNICAL MATERIEL CORP. MAMARONECK, NEW YORK RECEIVING SET, RADIO AN/URR 64(V)1 CABLE RUNNING SHEET |
| TOLERANCES ON | | MECH. DES. | DATE | |
| DECIMALS .X = .05 | | ELECT. DES. | DATE 4/13/70 | |
| FRACTIONS ± 1/64 | | CHECKED | DATE | |
| ANGLES ± 0°-30' | | DRAWN DEIERLEIN | DATE 11/14/69 | ISSUE B |
| MATERIAL | | | SIZE CODE IDENT NO. DWG NO. | |
| FINISH | | | D 82679 ID 375 | |
| SCALE | | | | SHEET 7 OF 7 |

| E.M.N.O. | DRAFT | CHKD | ZONE | LTR | DESCRIPTION | DATE | APPROVED |
|----------|-------|------|------|-----|---------------------------------|---------|----------|
| | KD | | | X | UPDATED TO 2-18-70 SUBMISSION | 2-13-70 | |
| 19997 | | | | | ORIGINAL RELEASE FOR PRODUCTION | 4-13-70 | |
| 20205 | RZ | | | B | REVISED | 9/30/70 | P.E.M. |
| | | | | | SEE SHT 1 OF 7 | 1-21-71 | P.C.B. |