

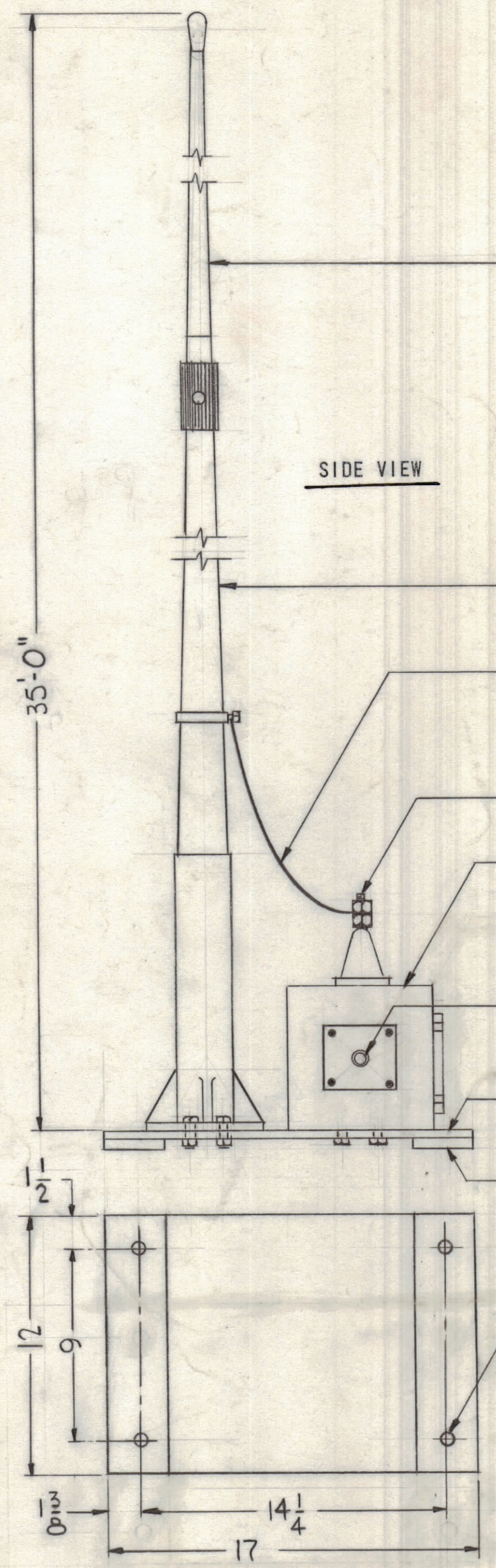
4

3

2

1

REVISIONS						
ZONE	LTR	DESCRIPTION	DATE	E.M.N.NO	DRAFT	CHKD APPD
		ORIGINAL RELEASE FOR PRODUCTION	1-30-67		L.A.K.	



- AW104-1
- AW104-3
- COPPER CONDUCTOR
- FEED THROUGH INSULATOR
- VRA - 11
- 70 Ω COAX RECEPTACLE TYPE "N" SUPPLIED WITH MATING PLUG
- 3/8 STEEL PLATE
- 1/2 STEEL PLATE WELDED TO MAIN BASE PLATE.
- 9/16 DIA. 4 HOLES

WIDEBAND RECEIVING WHIP ANTENNA SYSTEM

THE ANTENNA SYSTEM IS TO CONSIST OF A 35 FOOT FIBERGLASS WHIP WITH A COUPLING TRANSFORMER SO DESIGNED AS TO MATCH THE CHARACTERISTIC IMPEDANCE OF THE WHIP ANTENNA.

- FREQUENCY RANGE - 100 kc/s - 30 mc/s
- PATTERN - OMNI-DIRECTIONAL
- SYSTEM RESPONSE - OVER THE FREQUENCY RANGE OF 100 kc TO 17 mcs THE MATCHING TRANSFORMER WHEN TERMINATED IN A 70 OHM LOAD SHALL PROVIDE A GAIN OF 1 db OVER THE SAME WHIP WHEN CONNECTED DIRECTLY TO A 70 OHM LOAD. IN VICINITY OF 7 mcs AND ABOVE 17 mcs, SLIGHT LOSSES OCCUR. GAIN OVER THE REMAINDER OF THE FREQUENCY RANGE SPECIFIED SHALL BE GREATER THAN UNITY.
- OUTPUT TERMINATION - 70 OHMS NOMINAL
- POWER RATING - NOT LESS THAN 30 WATTS
- WIND AND ICE LOADING - CAPABLE OF WITHSTANDING 85 m.p.h. WITH 1/2" RADIAL ICE LOADING.
- WEATHERPROOFING - SEALED AGAINST ENTRY OF SNOW, RAIN, OR INSECTS.
- WHIP ANTENNA CONSTRUCTION - SELF SUPPORTING VERTICAL, 35 FOOT FIBERGLASS TWO SECTION.
- LIGHTNING PROTECTION - A DC PATH TO GROUND FOR ANTENNA STATIC DISCHARGE PLUS GAS FILLED LIGHTNING ARRESTORS.
- MATERIALS - ALL MATERIALS TO BE GUARANTEED AGAINST CARROSIVE DETERIORATION UNDER SEA-COAST CLIMATE CONDITIONS FOR A PERIOD OF 5 YRS.
- WEIGHT OF FIBERGLASS WHIP - NOT TO EXCEED 65 LBS.

VRA-11		
QTY / UNIT	MODEL USED ON	ASS'Y NO.
APPLICATION		
CODE		
<p>NOTICE TO PERSONS RECEIVING THIS DRAWING THE TECHNICAL MATERIEL CORPORATION claims proprietary right in the material disclosed hereon. This drawing is issued in confidence for engineering information only and may not be reproduced or used to manufacture anything shown hereon without permission from THE TECHNICAL MATERIEL CORPORATION to the user. This drawing is loaned for mutual assistance and is subject to recall at any time.</p>		

UNLESS OTHERWISE SPECIFIED DIMENSIONS ARE IN INCHES AND INCLUDE CHEMICALLY APPLIED OR PLATED FINISHES

TOLERANCES ON

DECIMALS	FRACTIONS
.X ± .05	± 1/64
.XX ± .01	ANGLES
.XXX ± .005	± 0° -30'

QTY. REQ.	ITEM	PART NO.	DESCRIPTION	SYMBOL
LIST OF MATERIAL				
THE TECHNICAL MATERIEL CORP. MAMARONECK, NEW YORK				
35' WIDEBAND RECEIVING WHIP ANTENNA SYSTEM				
SIZE			CODE IDENT.NO.	DWG NO.
C			82679	ID-361
SCALE			NONE	SHEET OF
				1

D

C

B

A

D

C

B

A

ID-361