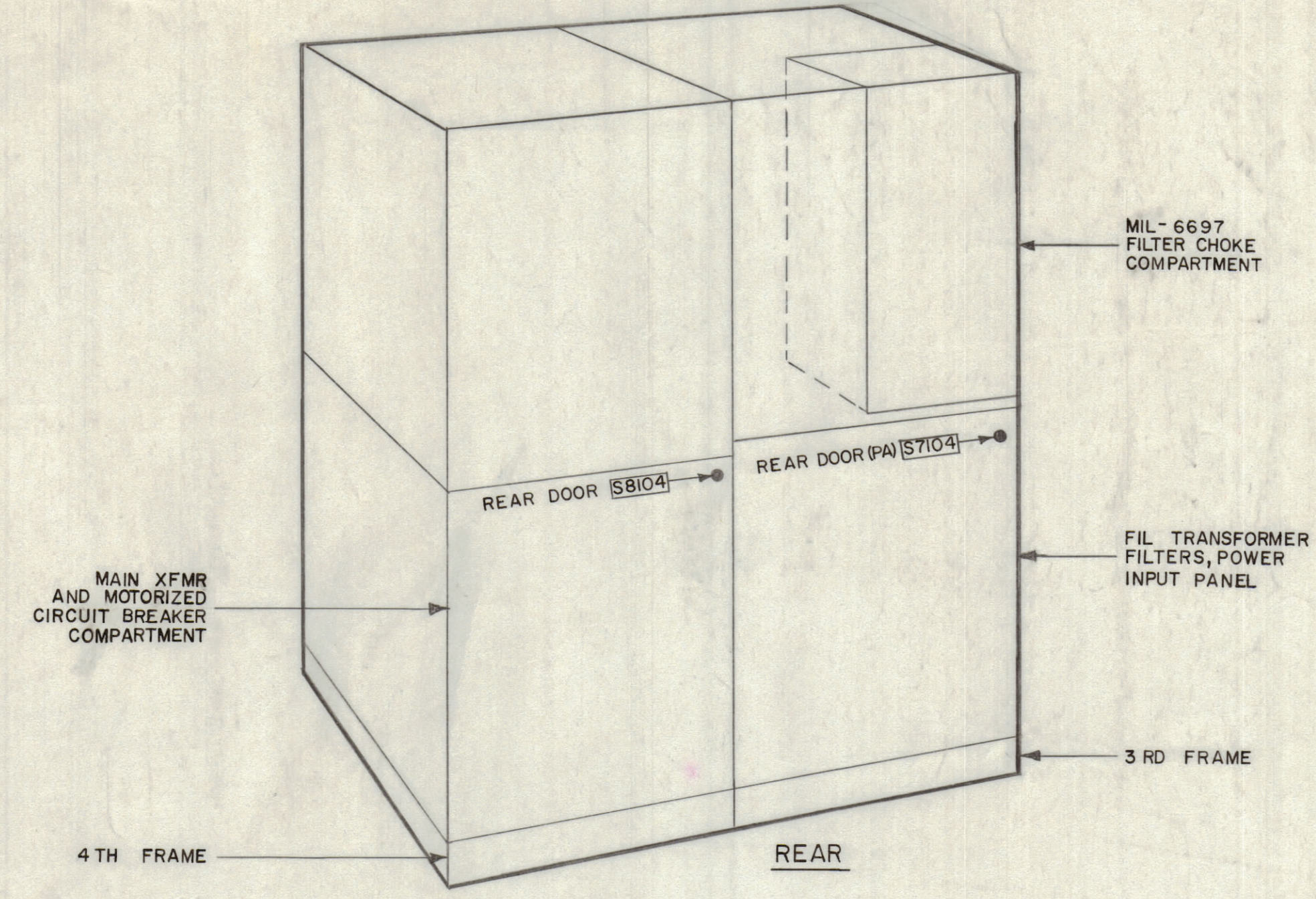
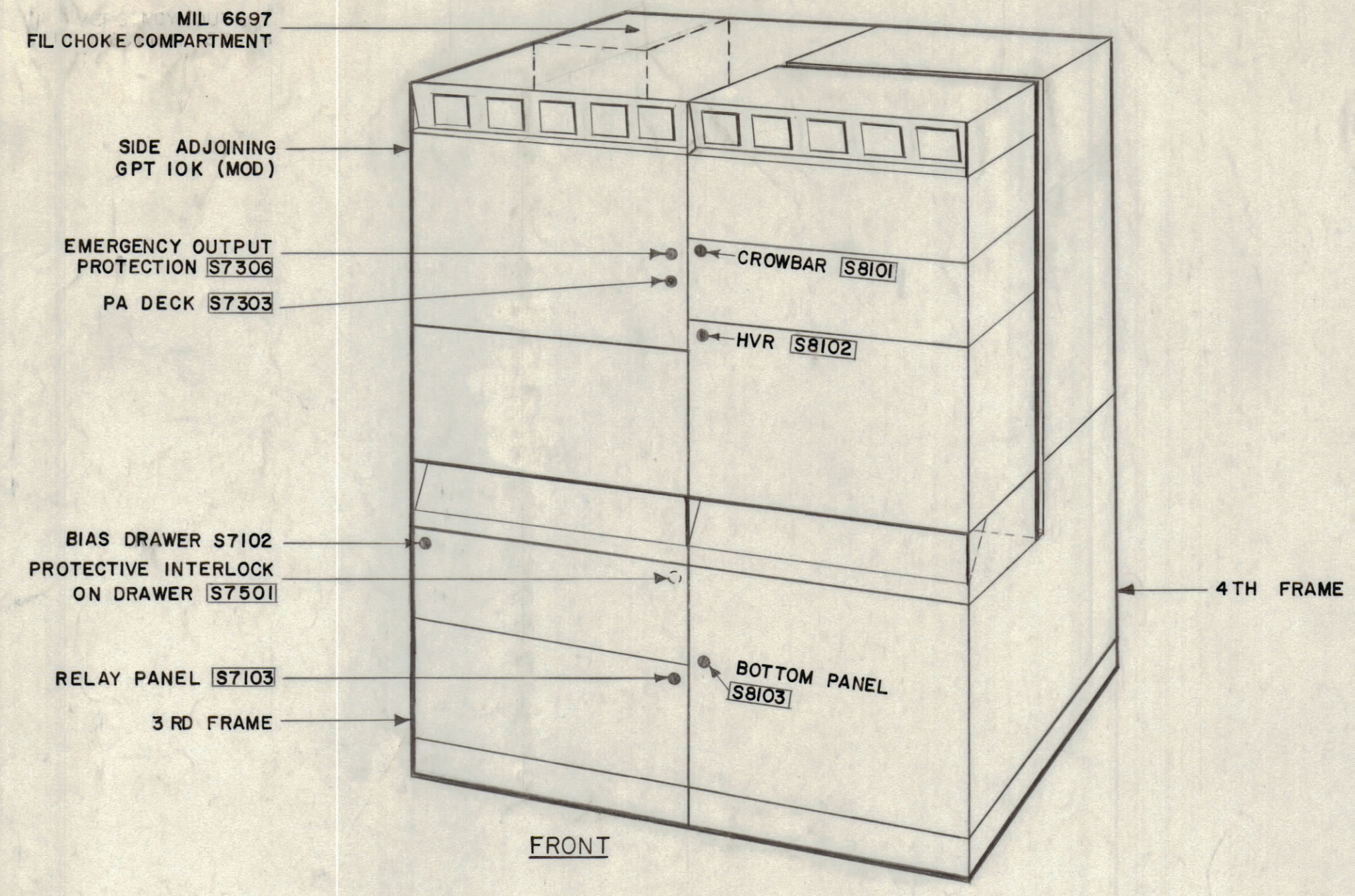
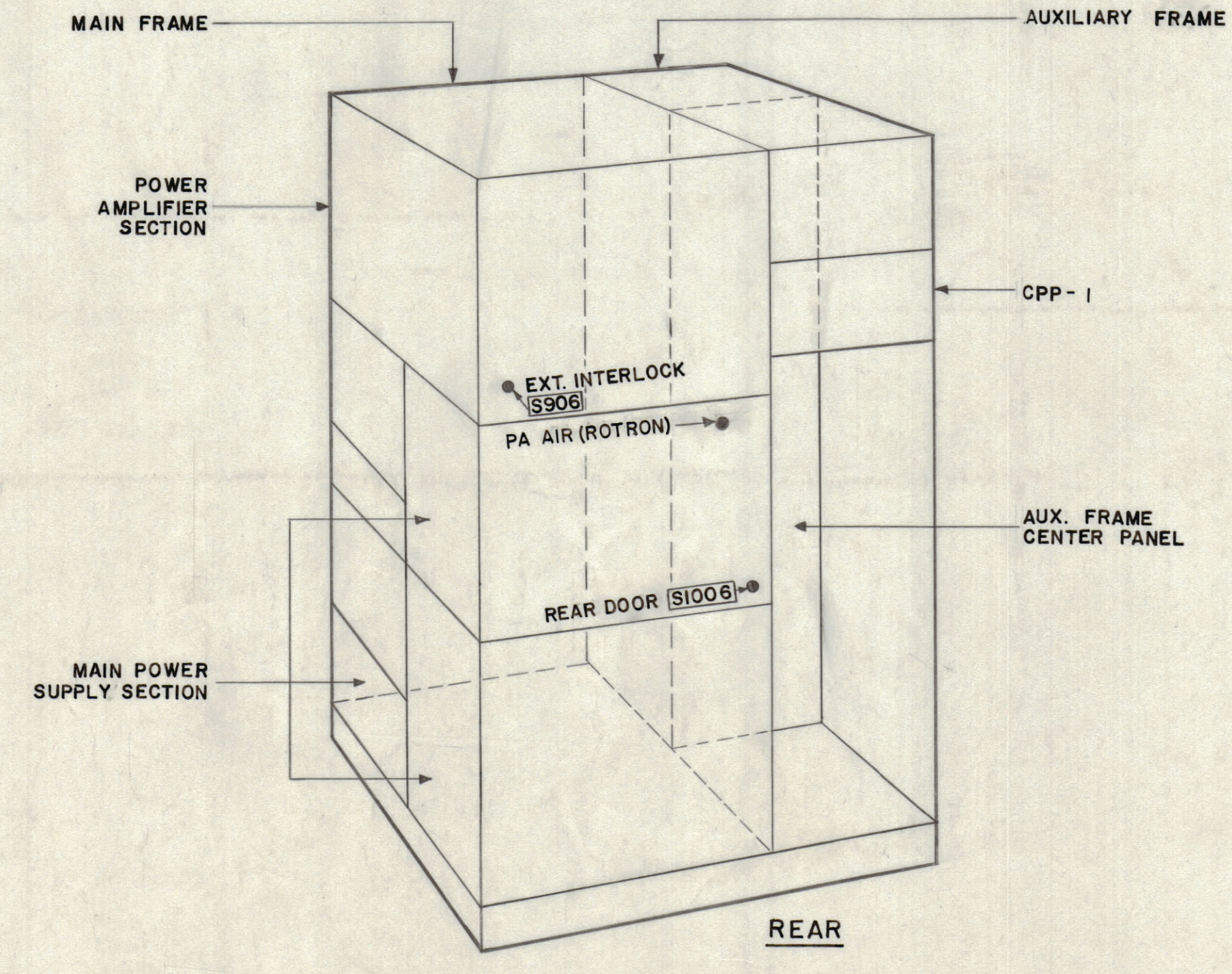
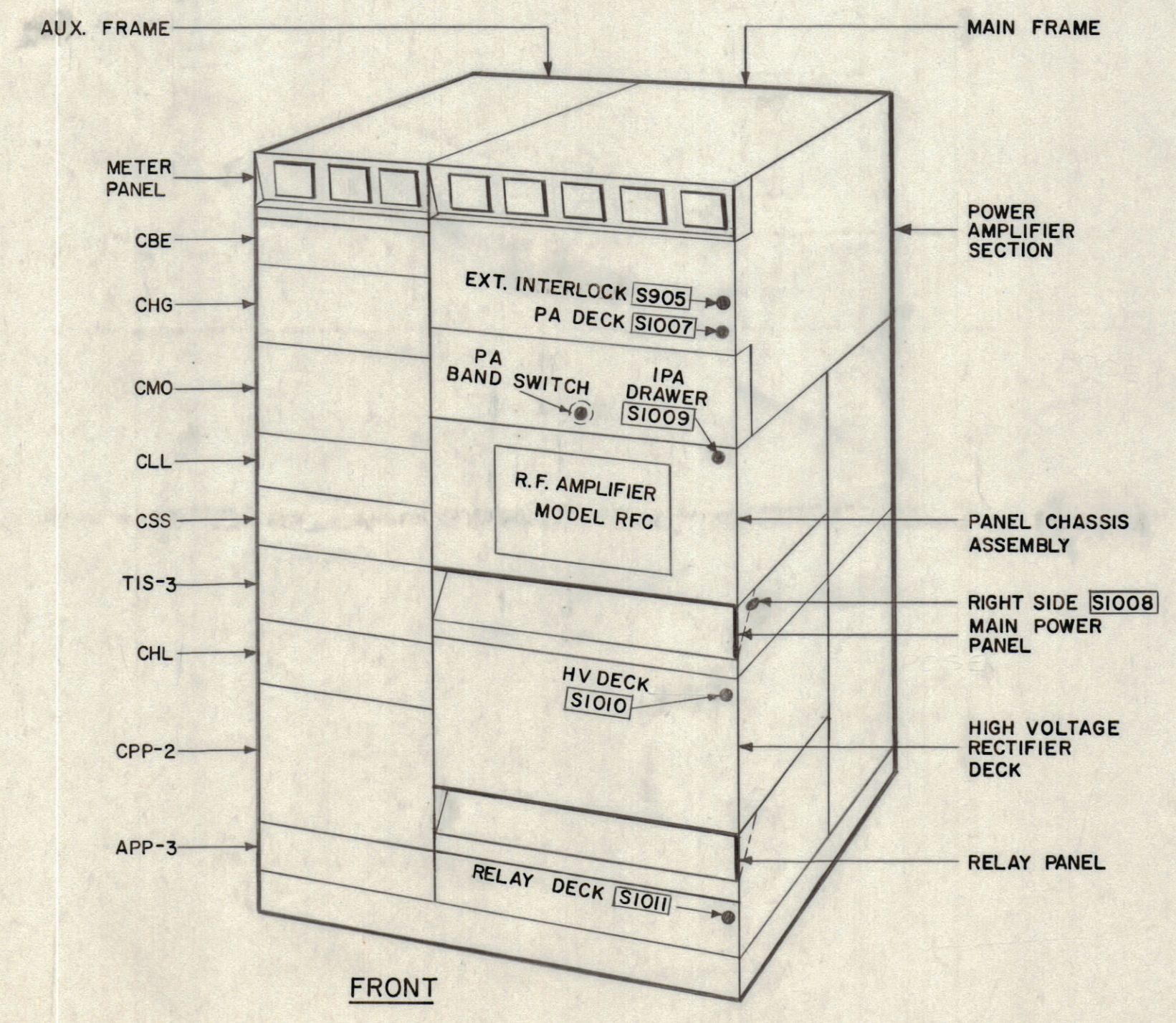


REVISIONS						
ZONE	SYM	DESCRIPTION	DATE	E.M.N. NO.	DRAFT	CHKD
		ORIGINAL RELEASE FOR PRODUCTION	8-16-65			



GPT 40K

NOTES:  
 INTERLOCK S905 & S906 ARE NOT PROVIDED IN INDIVIDUAL 10K PA AIR (ROTRON) MOUNTED ON AIR DUCT TO PA TUBE.  
 PA BANDSWITCH MOUNTED ON GEAR TRAIN TO L902/L903.  
 IPA AIRSWITCH MOUNTED NEAR BOTTOM OF PL-172 TUBE LOCATED IN RF AMPLIFIER\*  
 IPA BANDSWITCH MOUNTED ON SWITCH AXLE NEAR BANDSWITCH L245/L246 LOCATED IN RF AMPLIFIER\*.  
 EXTERNAL, SEE JUMPER ON E3000 BETWEEN TERMINALS 8 AND 10 LOCATED ON AUXILIARY FRAME.\*  
 \*NOT SHOWN ON DRAWING.  
 INSTALL SYMBOL REFERENCE DESIG. (NP788) ON OR ADJACENT TO INTERLOCK SWITCHES.  
 [ ] INDICATES SYMBOL REFERENCE DESIG. NP.



GPT 10K DRIVER

REF. NP 788

REQ. D.	ITEM	PART NUMBER	DESCRIPTION	SYMBOL
LIST OF MATERIAL				
MATERIAL		THE TECHNICAL MATERIEL CORP. MAMARONECK, NEW YORK		
FINISH		TITLE GPT 10K & 40K INSTALLATION OF INTERLOCKS		
SCALE		DRAWN Lanza DATE 8-16-65		
GTY./UNIT		CHECKED DATE 8-16-65		
MODEL USED ON		ELECT. DES. DATE		
CODE		MECH. DES. DATE		
ASSY. NO.		FINAL APPROVAL DATE		
THE CONTENTS OF THIS DRAWING ARE THE EXCLUSIVE PROPERTY OF THE TECHNICAL MATERIEL CORP. ITS UNAUTHORIZED USE OR REPRODUCTION IN WHOLE OR IN PART IS STRICTLY FORBIDDEN.		UNLESS OTHERWISE SPECIFIED DIMENSIONS ARE IN INCHES AND INCLUDE CHEMICALLY APPLIED OR PLATED FINISHES		
DECIMALS ± .005		FRACTIONS ± 1/64 ANGLES ± 0° 30'		
		SHEET 1		

NOTES

ID-34510

ID-34510