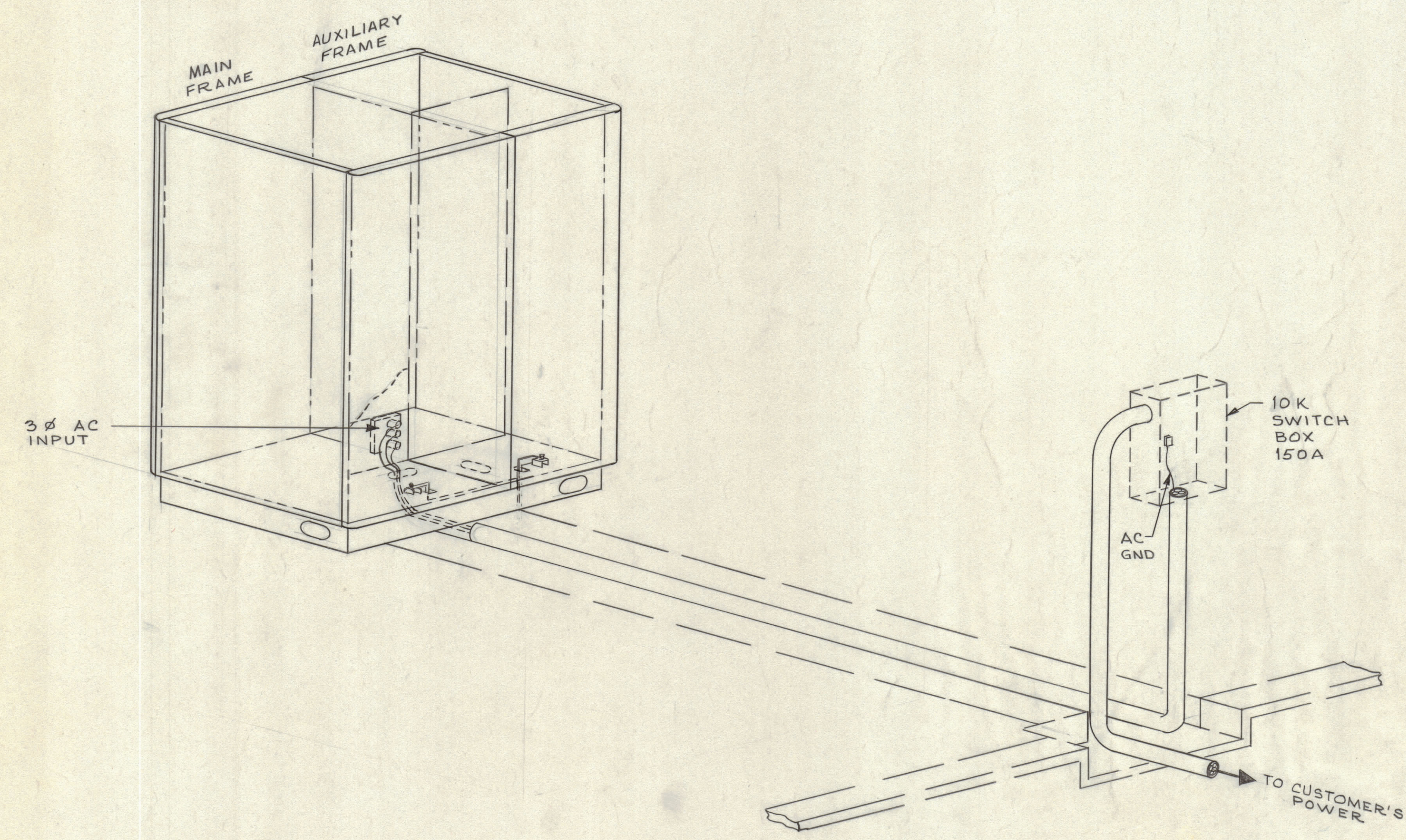


SYM		ZONE		DESCRIPTION	DATE	E.M.N.O.	DRAFT	CHKD	APPD
A				REDRAWN W/O CHANGES WAS "C" SIZE	12/21/65		MIT		

REAR VIEW



POWER REQUIREMENTS

POWER INPUT - 50 A / LEG
 VOLTAGE - 190 - 250 V AC
 PHASE - 3 ϕ
 FREQUENCY - 50/60 CPS
 HEAT DISSIPATION - 10 KW
 AMBIENT TEMP RANGE - 0° TO 50° C
 INTAKE AIR - 594 CFM
 EXHAUST AIR - 587 CFM

MAXIMUM ALLOWABLE TOLERANCES HAVE BEEN DETERMINED AND ANY DEVIATIONS WILL BE CAUSE FOR REJECTION.

QTY REQ	ITEM	PART NO.	DESCRIPTION	SYMBOL
BILL OF MATERIAL				
UNLESS OTHERWISE SPECIFIED DIMENSIONS ARE IN INCHES TOLERANCES ON FRACTIONS DECIMALS ANGLES $\pm 1/64$ $\pm .005$ $\pm 1/2^\circ$			THE TECHNICAL MATERIEL CORP. MAMARONECK, NEW YORK	
MATERIAL			TRANSMITTING SET, RADIO AN/FRT-39H	
FINISH			INPUT POWER DETAILS	
CONTRACT NO. N600(63133-11-126)63002			CODE 82679	SIZE D
DRAWN M J TANTILLO 5-1-65			DWG. NO. ID-332	ISSUE A
APPROVED FOR BUSHIPS			SCALE NONE	SHEET 4 OF 4