

SYM		ZONE	DESCRIPTION	DATE	FM	NO.	DRAFT	CHKD	APPD

AMPHENOL
57-30500

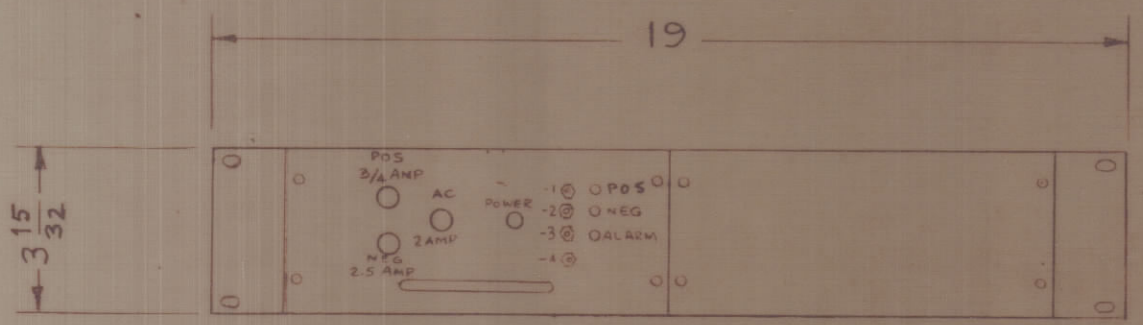
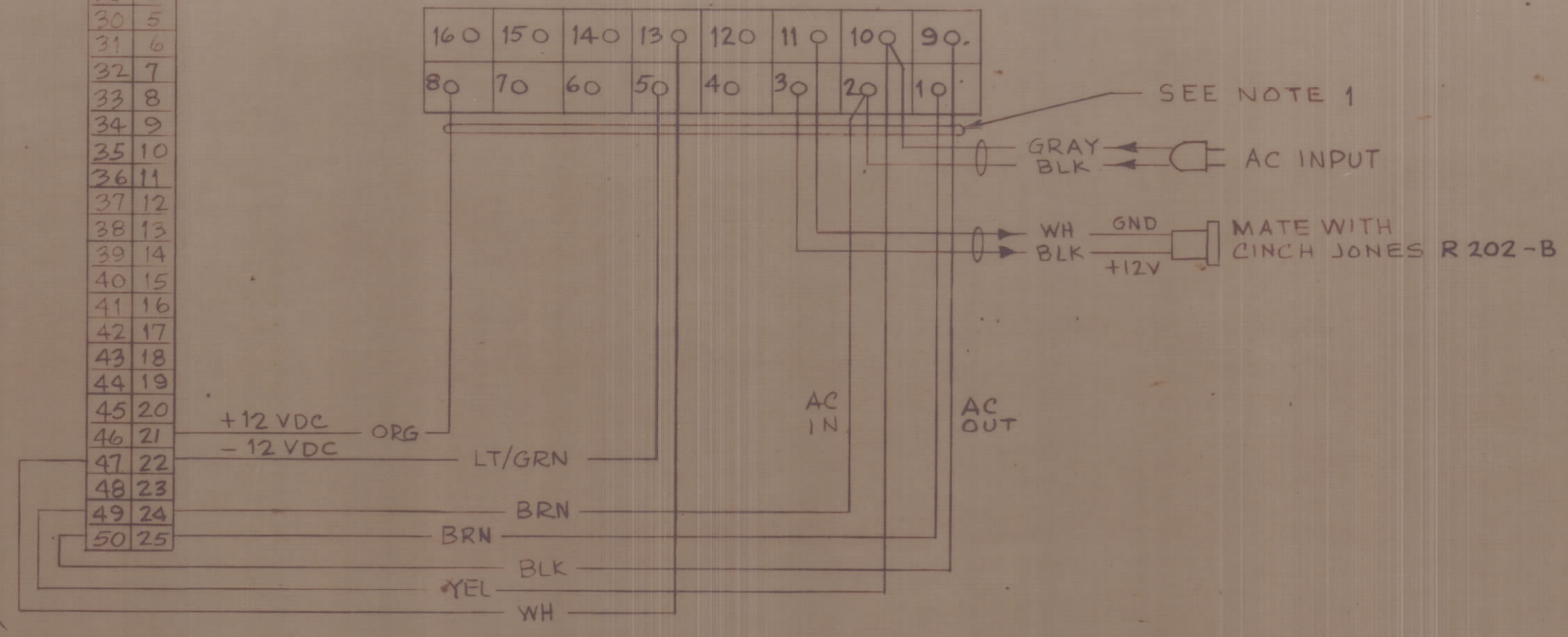
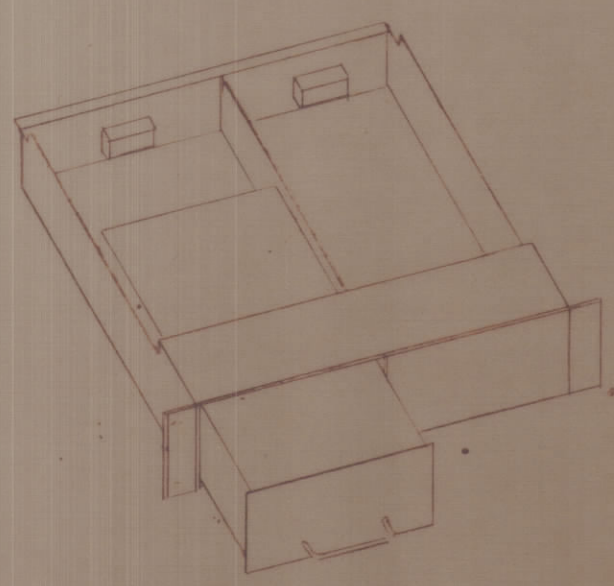
26	1
27	2
28	3
29	4
30	5
31	6
32	7
33	8
34	9
35	10
36	11
37	12
38	13
39	14
40	15
41	16
42	17
43	18
44	19
45	20
46	21
47	22
48	23
49	24
50	25

DETAIL A

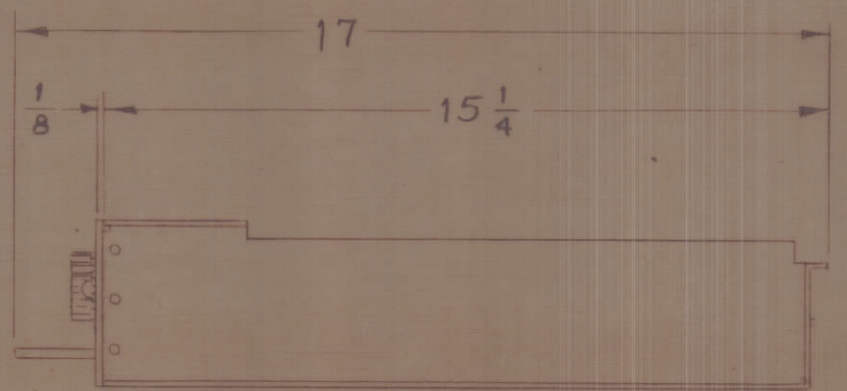
P1

160	150	140	130	120	110	100	90
80	70	60	50	40	30	20	10

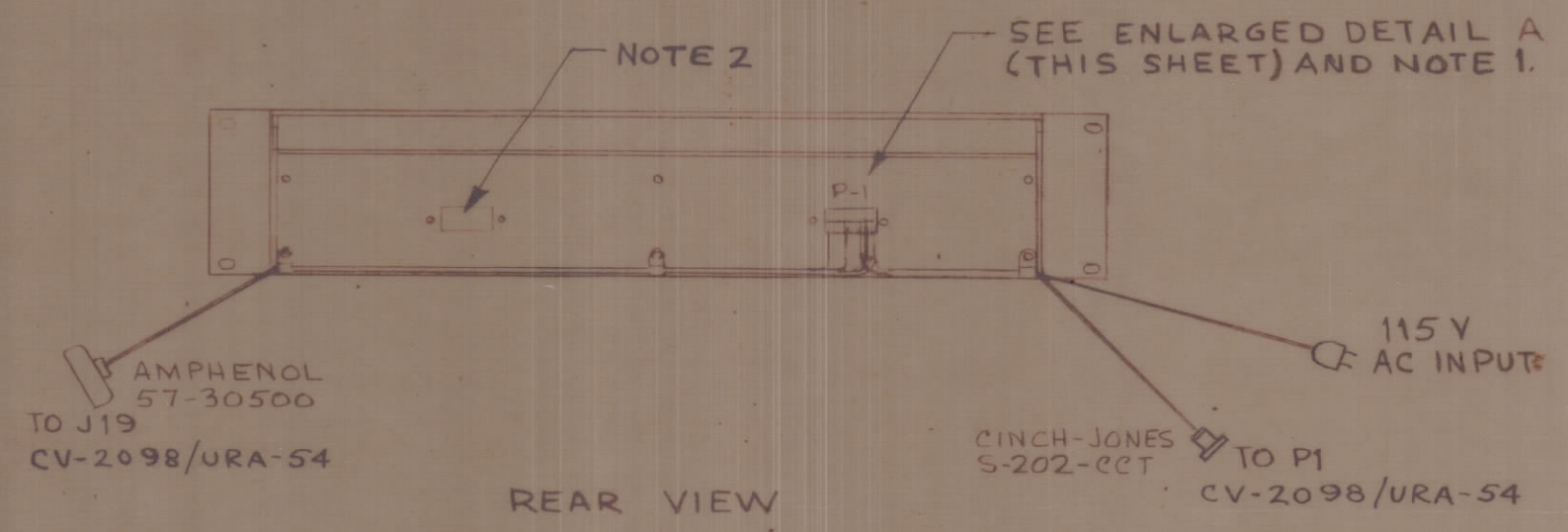
MATES WITH
AMPHENOL 57-40500
(SEE SHEET 3
DETAIL A)



FRONT VIEW



RIGHT SIDE VIEW



REAR VIEW

NOTE:

- 1- CABLE HARNESS PART OF SHELF ATTACHED TO P1. DETAIL A (THIS SHEET) SHOWS CABLING PROVIDED AS PART OF THE EQUIPMENT.
- 2- FOR ADDITIONAL PS UNIT (NOT SUPPLIED) NOT USED.

CONTRACT No. N600(63133-11-126) 63002	EXAMINED		NAVAL SHORE ELECTRONICS ENGINEERING CENTER WASHINGTON, D C	
	TECHNICAL MATERIEL CORP	OFFICIAL		
DWG No. ID-330-2	BR HEAD	PROJ ENG	PP-454I/URA CONVERTER-POWER SUPPLY GROUP, SEND POWER SUPPLY INTERCONNECT	
APPROVED <i>[Signature]</i> DATE <i>3/2/66</i>	PROJ DIR	DRAFT SEC		
SATISFACTORY TO:	DRAWN	RW 23	CODE IDENT 82679	SIZE C
DATE:	FEDERAL SUPPLY CODE 82679	566		SHEET 2 OF 5
	CONTR DRAWING NO. ID-330-2	SCALE NONE		