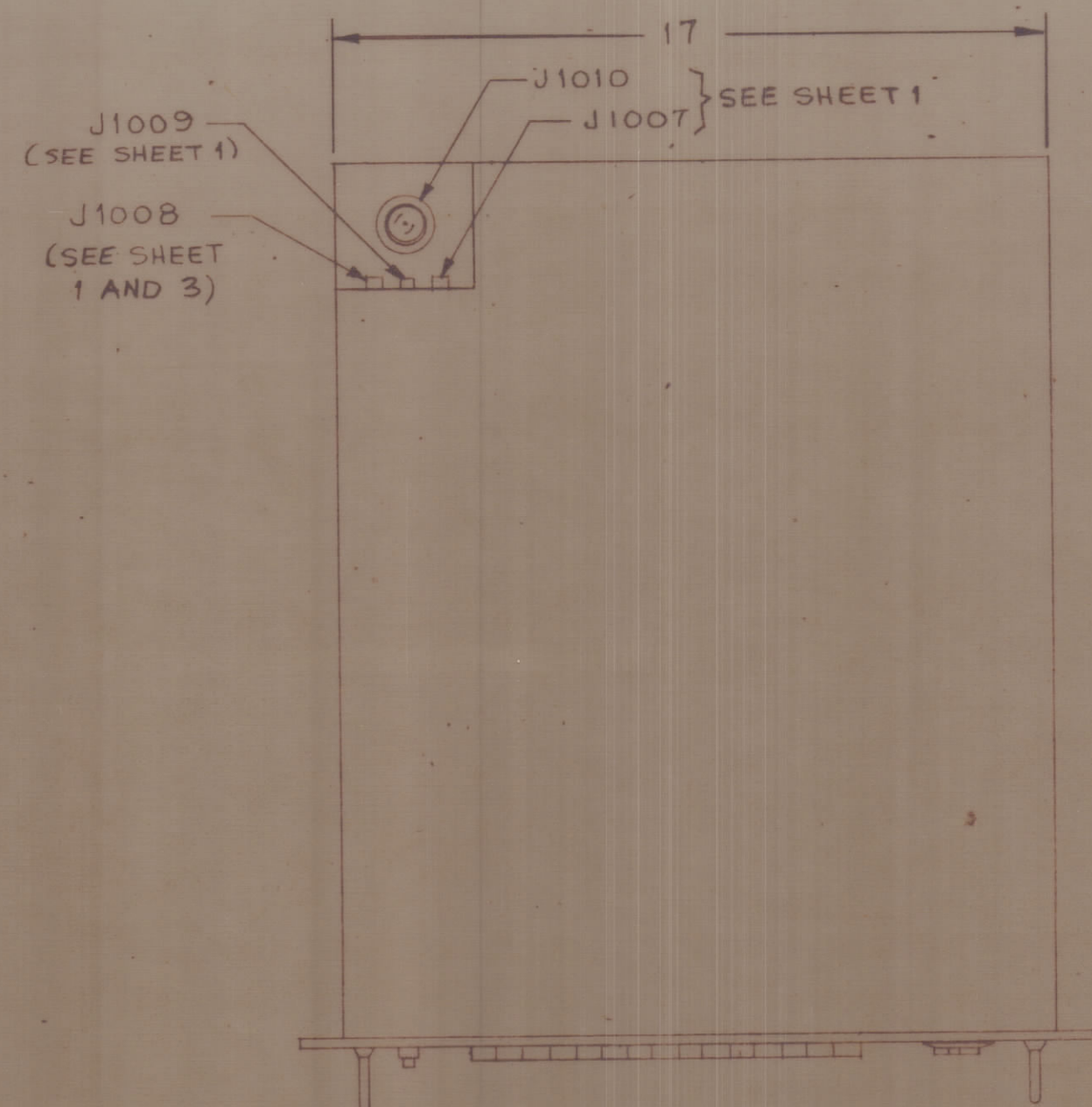


REVISIONS						
SYM	ZONE	DESCRIPTION	DATE	E.M.N.NO	DRAFT	CHKD APPD



TECHNICAL DATA

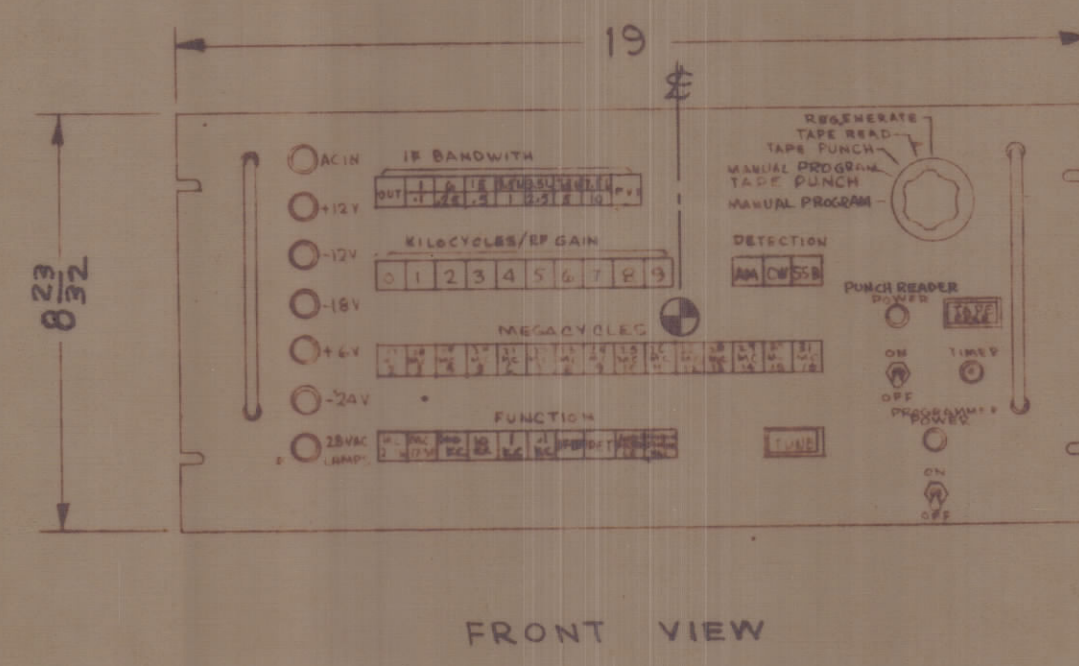
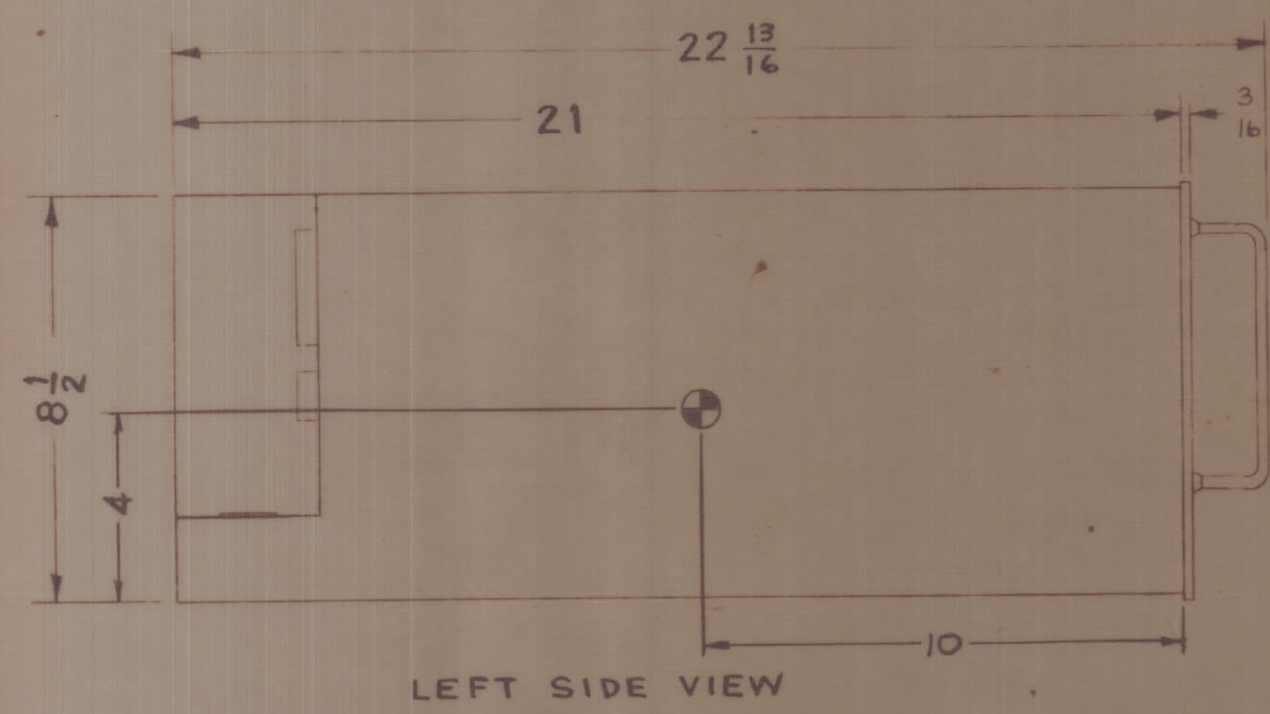
POWER INPUT -	100 WATTS
VOLTAGE -	115/230 VAC
PHASE -	1 ϕ
FREQUENCY -	50/60 CPS
HEAT DISSIPATION -	100 WATTS/340 BTU
AMBIENT TEMP RANGE -	0° TO 50° C
RELATIVE HUMIDITY -	0 - 90%
WEIGHT -	49 lbs.

CRATED DATA		
WEIGHT	DIMENSIONS	CU. FT.
167 lbs	29 ³ / ₈ x 20 ³ / ₈ x 38 ¹ / ₄	13'-2"

NOTE

1. SEE SHEET 6 FOR INSTALLATION MATERIAL LIST.

⊙ = CENTER OF GRAVITY



CONTRACT No. N600(63133-11-126)63002 TECHNICAL MATERIEL CORP	EXAMINED		NAVAL SHORE ELECTRONICS ENGINEERING CENTER WASHINGTON, D C	
	OFFICIAL	SIGNATURE		
DWG No. ID-327-2 <i>M. J. [Signature]</i> APPROVED / DATE 3/2/66	BR HEAD		REMOTE TUNING CONTROL GROUP PROGRAMMER, ELECTRONIC, MODEL RTPD-1	
	PROJ ENG			
SATISFACTORY TO:	DIV DIR			
	PROJ DIR			
	DRAFT SEC		RW 23	CODE IDENT 82679
	DRAWN			
	FEDERAL SUPPLY CODE 82679		C	564
DATE:	CONTR DRAWING NO. ID-327-2			
			SCALE NONE	SHEET 2 OF 6