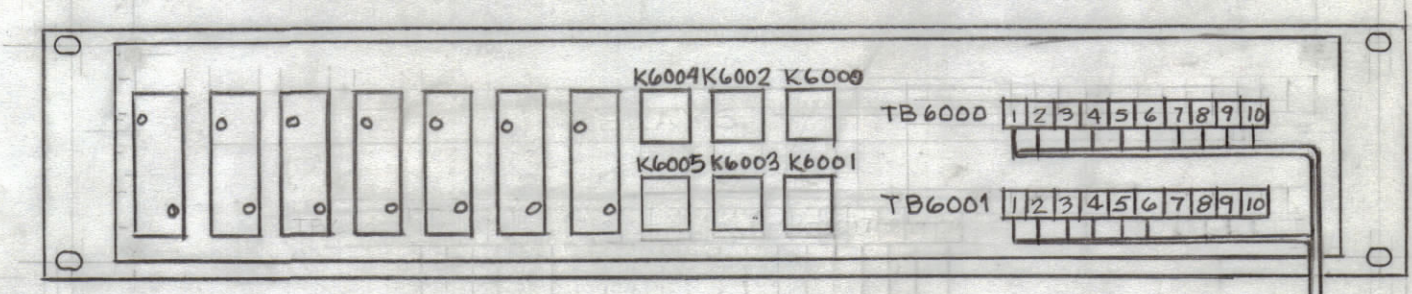
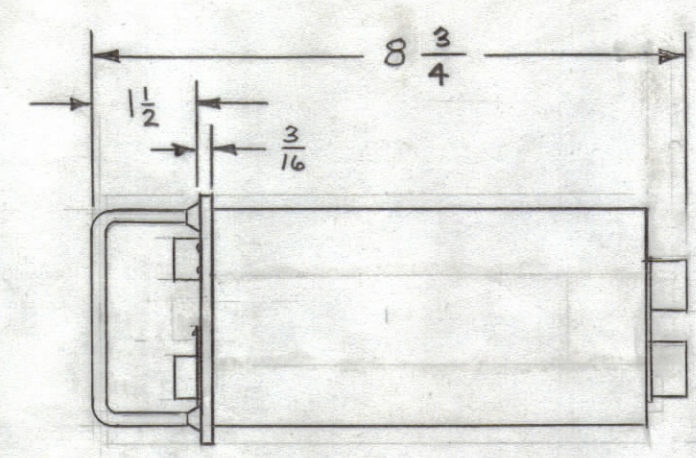
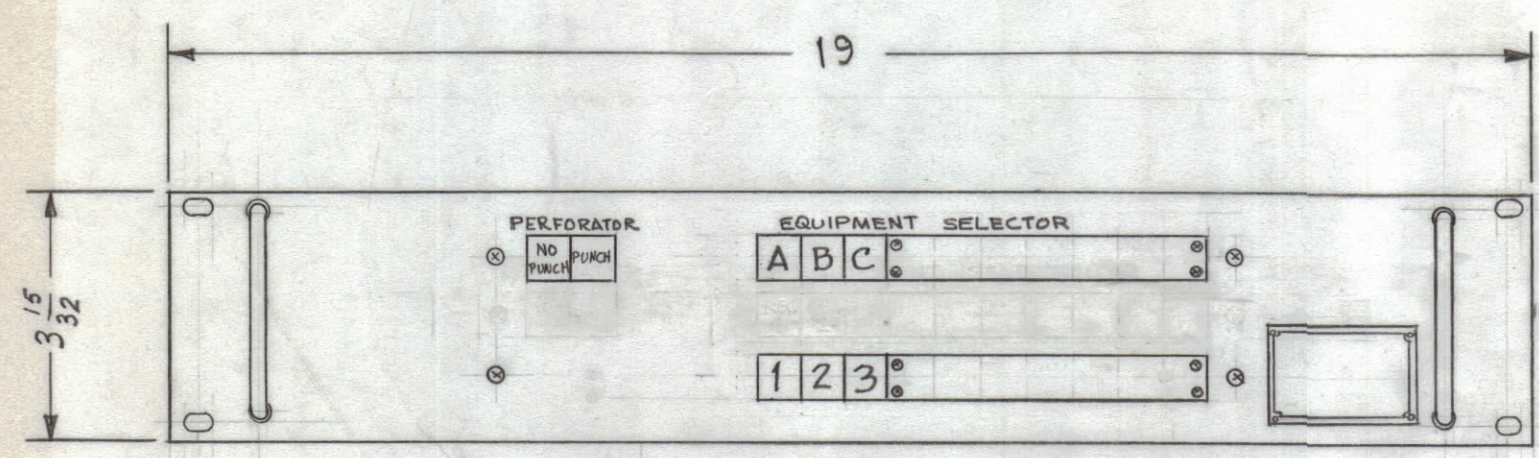


REVISIONS						
SYM	ZONE	DESCRIPTION	DATE	E.M.N.O.	DRAFT	CHKD APPD
A		REVISED	9/27/65		MJT	
B	E2, E6 EG	CA-1197-1 WAS CA-1145-3 UPDATED. DETAIL "A"	1/17/66	#	MJT	
C		SEE SHEETS 1, 2, & 4. TECH DATA ADDED	5/23/66	16287	WHD	<i>JEB</i>

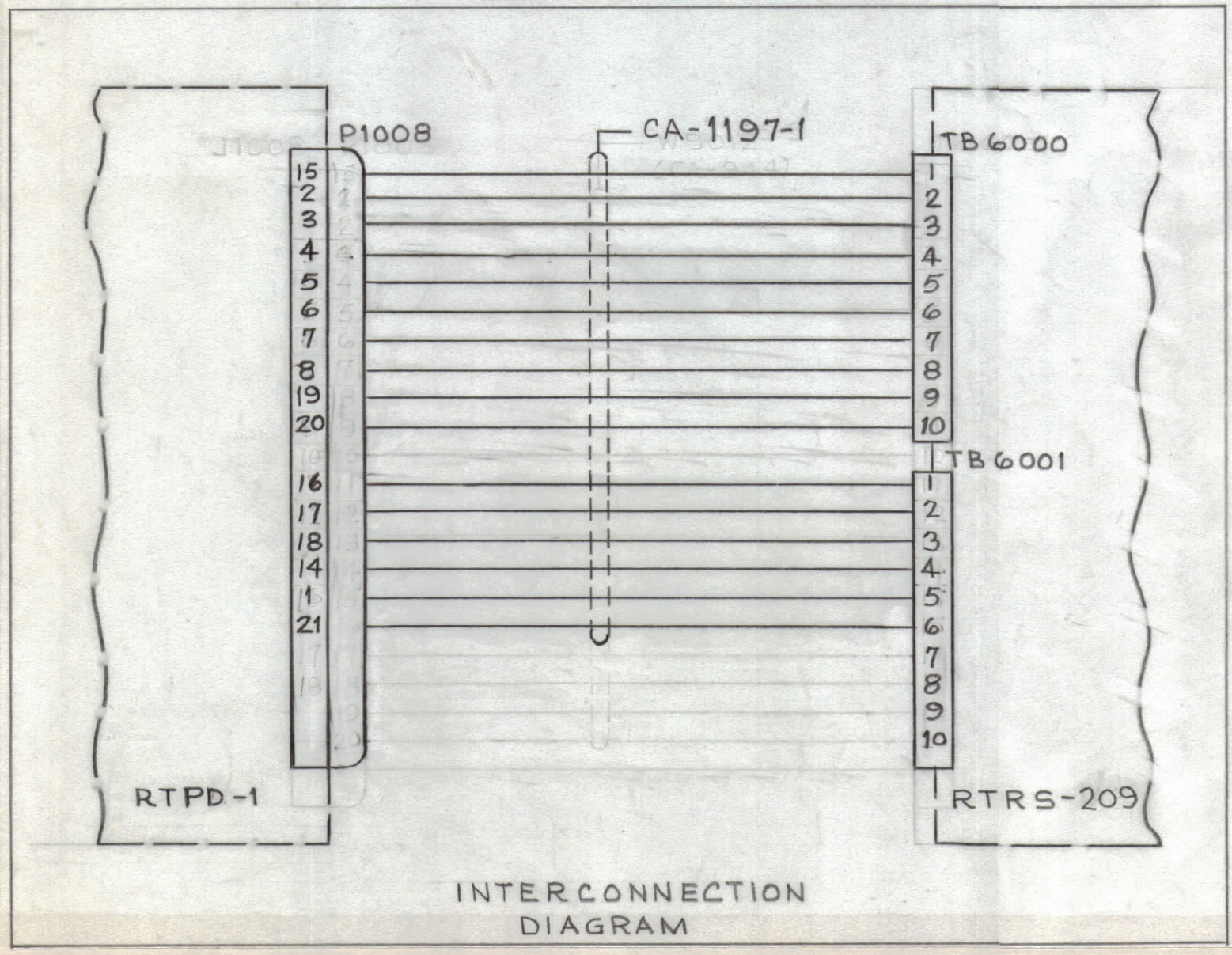
FRONT VIEW

RIGHT SIDE VIEW

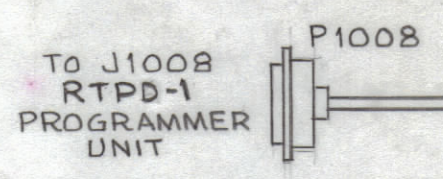
REAR VIEW



DETAIL A



INTERCONNECTION DIAGRAM



CA-1197-1 SUPPLIED

NOTE 1. THE RTRS-209 AND RTPD-1 MUST BE COLLOCATED WITH THE RTRS-209 DIRECTLY BELOW THE RTPD-1 FOR OPERATORS CONVENIENCE AND DUE TO LENGTH OF INTERCONNECTING CABLE.

2. SEE SHEET 6 FOR INSTALLATION MATERIAL LIST.

TECHNICAL DATA  
 RECEIVES OPERATING VOLTAGES FOR INDICATOR LIGHTS FROM ASSOCIATED PROGRAMER  
 HEAT DISSIPATION - NEGLIGIBLE  
 AMBIENT TEMPERATURE RANGE -0°C TO 50°C  
 RELATIVE HUMIDITY - 0% TO 90%  
 WEIGHT - 8LBS

QTY REQ	ITEM	PART NO.	DESCRIPTION	SYMBOL
BILL OF MATERIAL				
UNLESS OTHERWISE SPECIFIED DIMENSIONS ARE IN INCHES TOLERANCES ON FRACTIONS DECIMALS ANGLES ±1/64 ±.005 ±1/2°			THE TECHNICAL MATERIEL CORP. MAMARONECK, NEW YORK	
FINAL APPROVAL <i>F. C. Crator</i> 5/13/65 MECH. DES. DATE			REMOTE TUNING CONTROL GROUP SELECTOR, RECEIVER, MODEL RTRS-209	
ELECT. DES. <i>J. Edmundo</i> 5-13-65 DATE				
CHECKED <i>W. J. Johnson</i> 5-13-65 DATE				
DRAWN M TANTILLO 5-2-65 DATE				
MATERIAL			CODE 82679 C DWG. NO. ID-327 ISSUE C	
FINISH			SCALE NONE SHEET 3 OF 6	
APPROVED FOR BUSHIPS			CONTRACT NO. N600(63133-11-126)63002	

MAXIMUM ALLOWABLE TOLERANCES HAVE BEEN DETERMINED AND ANY DEVIATIONS WILL BE CAUSE FOR REJECTION.