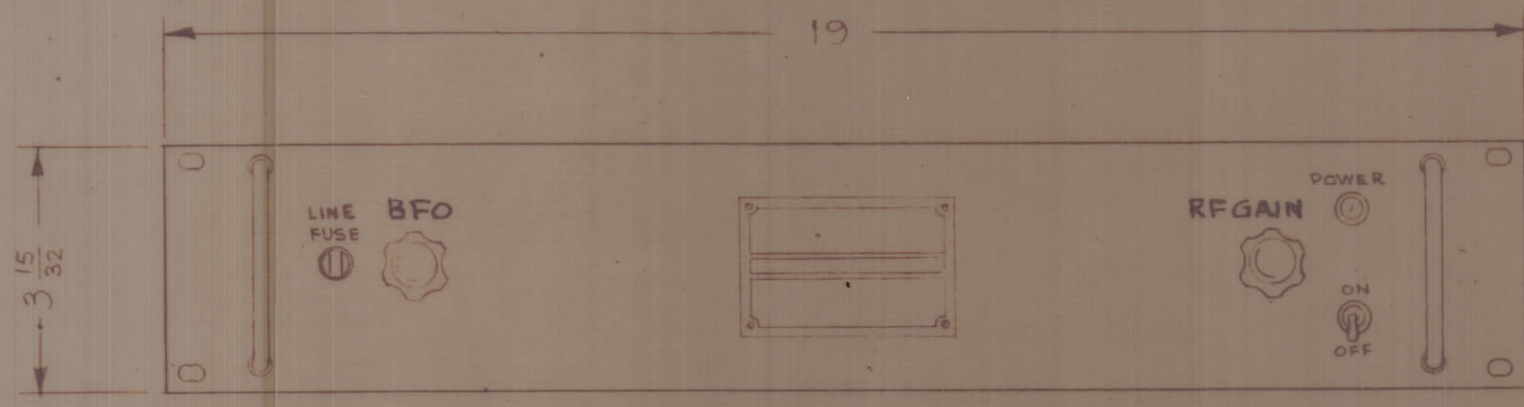


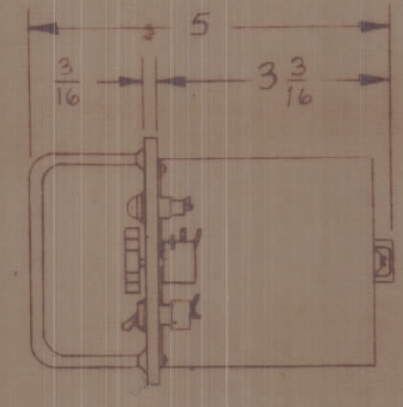
REVISIONS							
SYM	ZONE	DESCRIPTION	DATE	E.M.N.O.	DRAFT	CHKD	APPD

**TECHNICAL DATA**

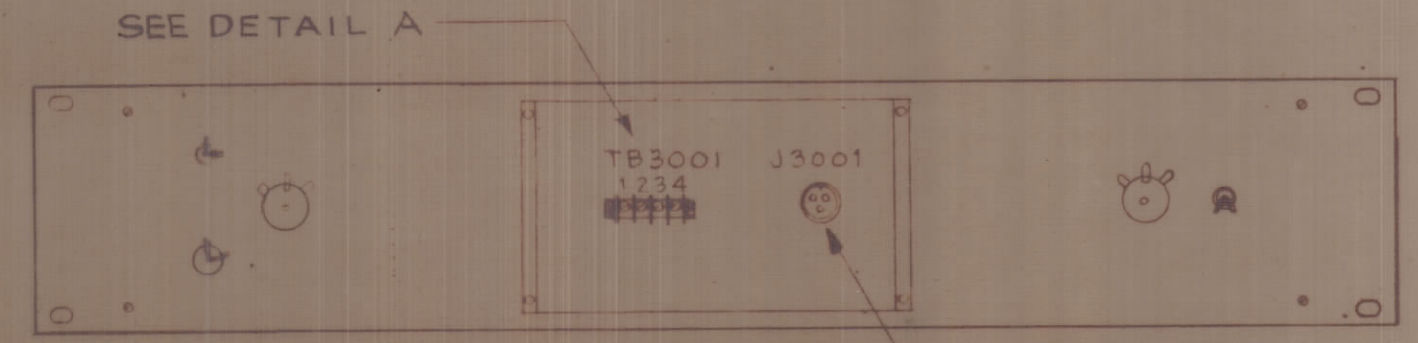
POWER INPUT - 8 WATTS  
 VOLTAGE - 115/230 VAC  
 PHASE - SINGLE  
 FREQUENCY - 50/60 CPS  
 HEAT DISSIPATION - 8 WATTS, BTU 27/HR  
 AMBIENT TEMP. RANGE - 0° TO 50°C  
 RELATIVE HUMIDITY - 0 TO 90%  
 WEIGHT - 6 lbs.



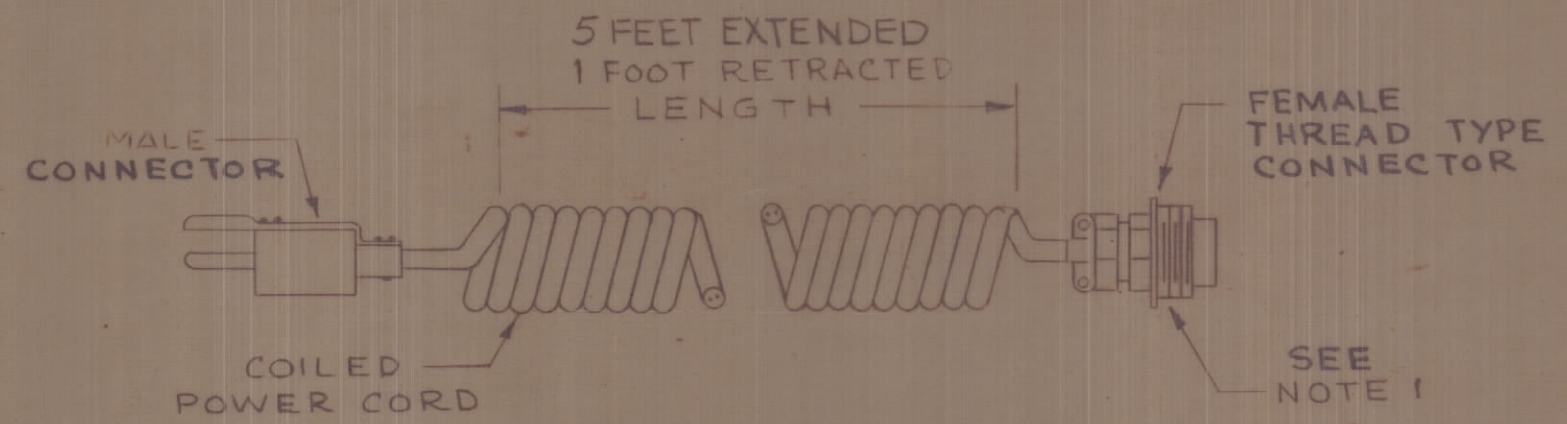
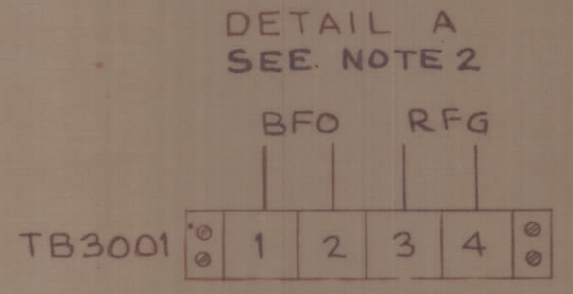
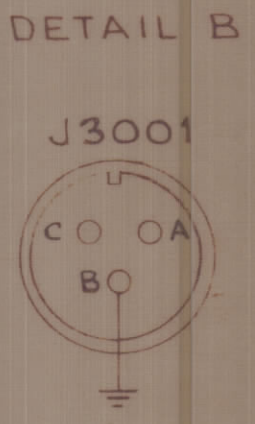
FRONT VIEW



RIGHT SIDE VIEW



REAR VIEW



CA-1068-1 CABLE ASSEMBLY, AC

NOTE 1. PLUGS INTO J3001 (SEE DETAIL B)  
 2. 0 TO -10V DC OUTPUT FOR CONTROL OF ANALOG TO DIGITAL CHANNEL IN CV-2098/URA-54

3. SEE SHEET 6 OF 6 FOR INSTALLATION MATERIAL LIST.

CONTRACT No. N600(63133-II-126)63002	<b>EXAMINED</b>		NAVAL SHORE ELECTRONICS ENGINEERING CENTER WASHINGTON, D C	
TECHNICAL MATERIEL CORP	OFFICIAL	SIGNATURE	CONTROL MONITOR GROUP CONTROL UNIT, C-7007/URR	
DWG No. ID-325-5	BR HEAD			
<i>M. H. King</i>	PROJ ENG			
APPROVED	DIV DIR			
DATE <i>3/2/66</i>	PROJ DIR			
SATISFACTORY TO:	DRAFT SEC			
	DRAWN		RW	CODE IDENT
			23	82679
	FEDERAL SUPPLY CODE 82679		SIZE	C
DATE: _____	CONTR DRAWING NO. ID-325-5	SCALE NONE	562	
			SHEET 5 OF 6	