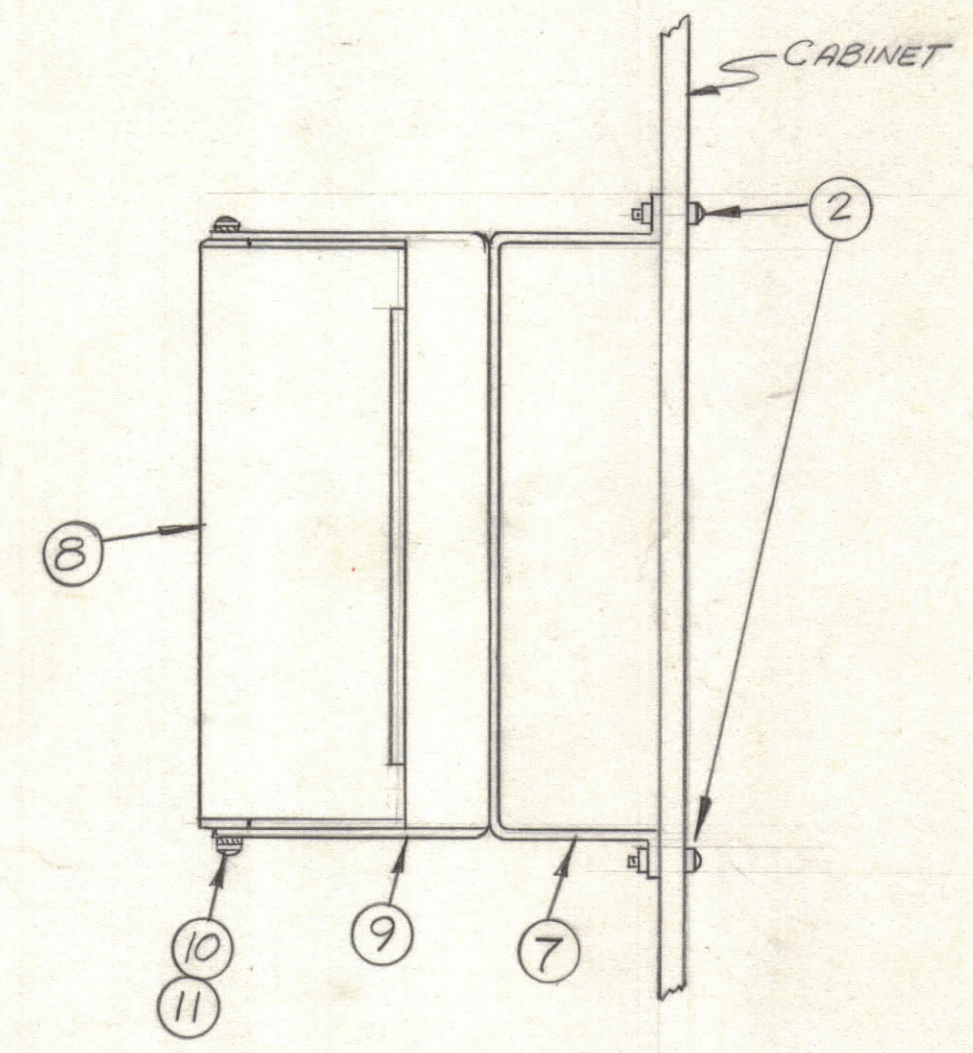
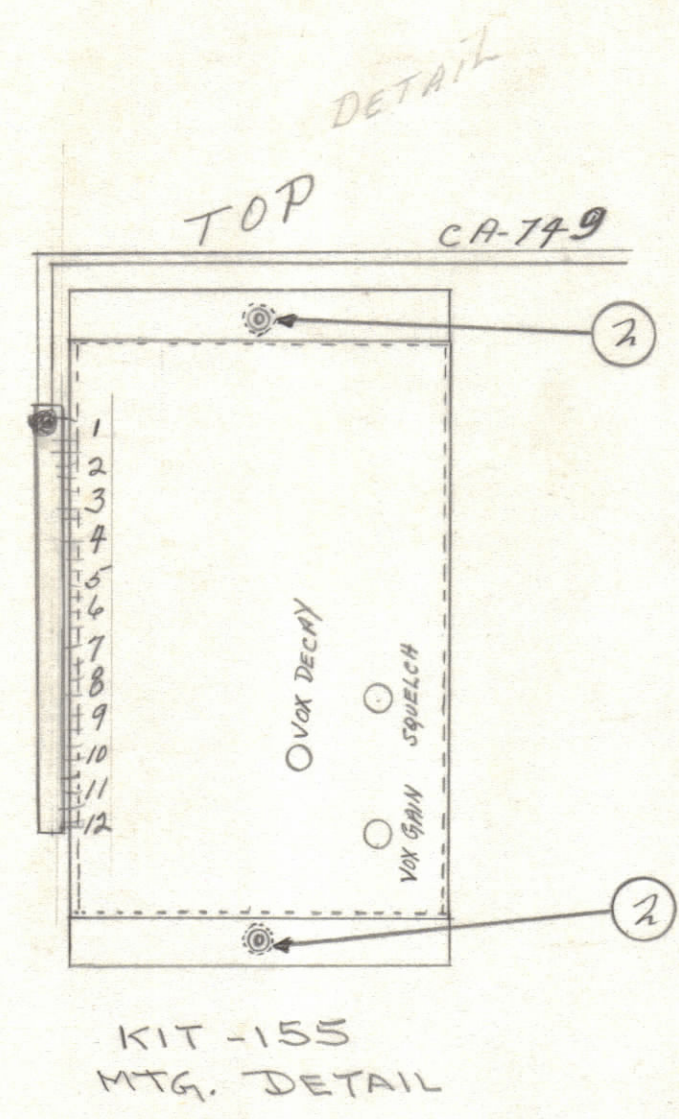
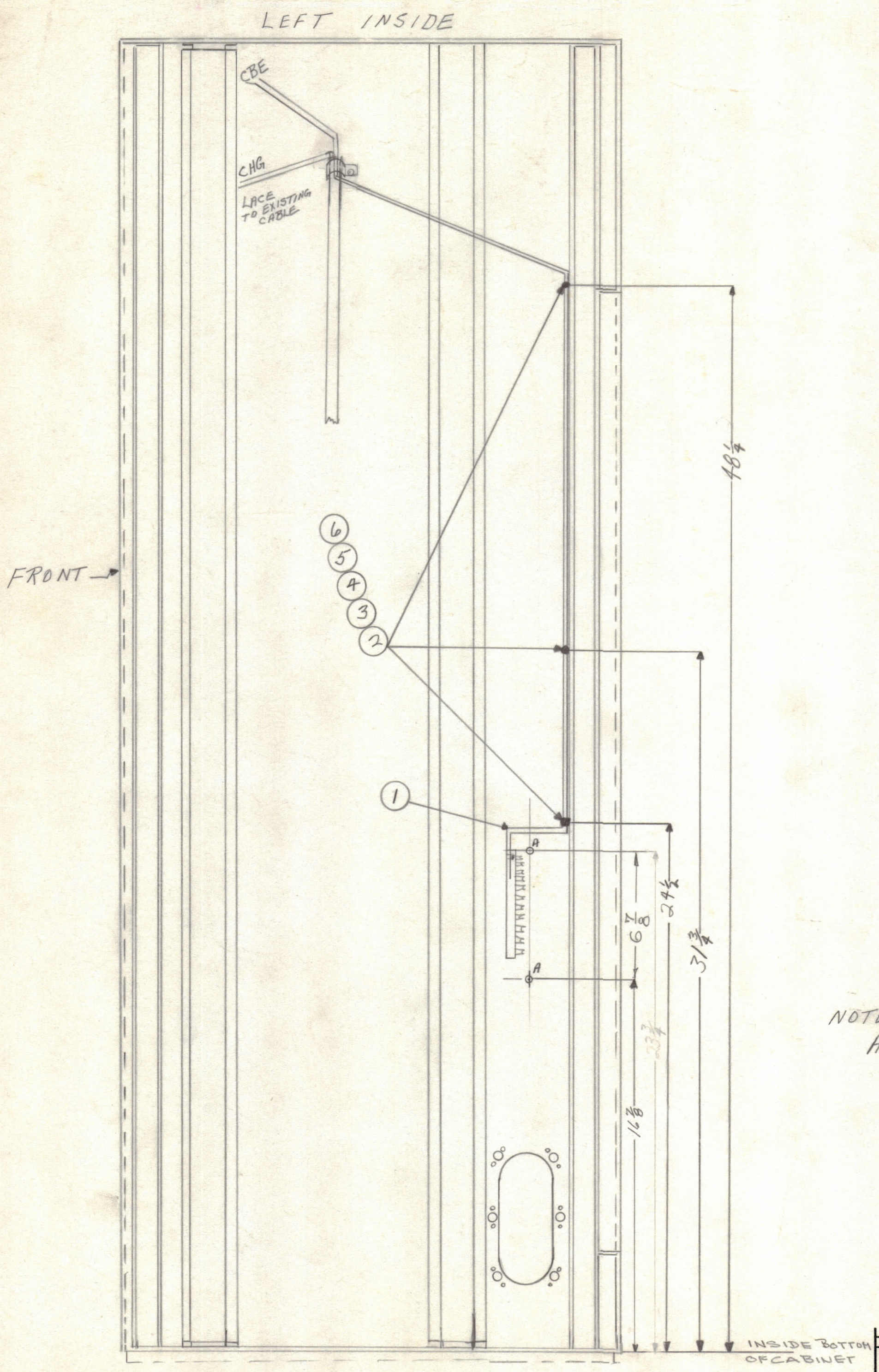


REVISIONS						
ZONE	SYM	DESCRIPTION	DATE	E.M.N. NO.	DRAFT	CHKD
	A	ON B/M & PICT. ADD. IT. 7, 8, 9, 10, 11; IT. 4 WAS FWOBMEN	1-17-66	15520	HLA	JG



NOTE:
A HOLES $\frac{5}{32}$ DIA. 2 REQ.

REQ'D.	ITEM	PART NUMBER	DESCRIPTION	SYMBOL
4	11	LWE04MRN	WASHER, LK, EXT	
4	10	SCBP0440BN5	SCREW, MACHINE	
1	9	MS3018	COVER, CHASSIS	
1	8	A3139	CHASSIS ASSY.	
1	7	MS3019	BRACKET, MTG.	
3	6	NTH0832BN10	NUT, HEX	
3	5	LWE08MRN	LOCKWASHER, EXTERNAL	
3	4	FW08HBN	WASHER, FLAT	
3	3	CU-102-2	CLAMP "G" TYPE	
5	2	SCBP0832BN8	SCREW, MACHINE	
1	1	CA-749	WIRING HARNESS BRANCHED	

LIST OF MATERIAL			
MATERIAL		THE TECHNICAL MATERIEL CORP. MAMARONECK, NEW YORK	
FINISH		TITLE <i>INSTALLATION OF KIT-155 IN 5BG RACK</i>	
UNLESS OTHERWISE SPECIFIED DIMENSIONS ARE IN INCHES AND INCLUDE CHEMICALLY APPLIED OR PLATED FINISHES		DRAWN <i>JG</i>	DATE <i>3-21-63</i>
DECIMALS .X ± .05 .XX ± .01 .XXX ± .005		CHECKED <i>JG</i>	DATE
FRACTIONS ± 1/64 ANGLES ± 0° 30'		ELECT. DES.	DATE
TOLERANCES		MECH. DES.	DATE
		DATE <i>3-21-63</i>	DATE <i>3-21-63</i>
		SHEET	REV. LTR.

NOTES

THE CONTENTS OF THIS DRAWING ARE THE EXCLUSIVE PROPERTY OF THE TECHNICAL MATERIEL CORP. ITS UNAUTHORIZED USE OR REPRODUCTION IN WHOLE OR IN PART IS STRICTLY FORBIDDEN.

ID286
A