

FIG 1

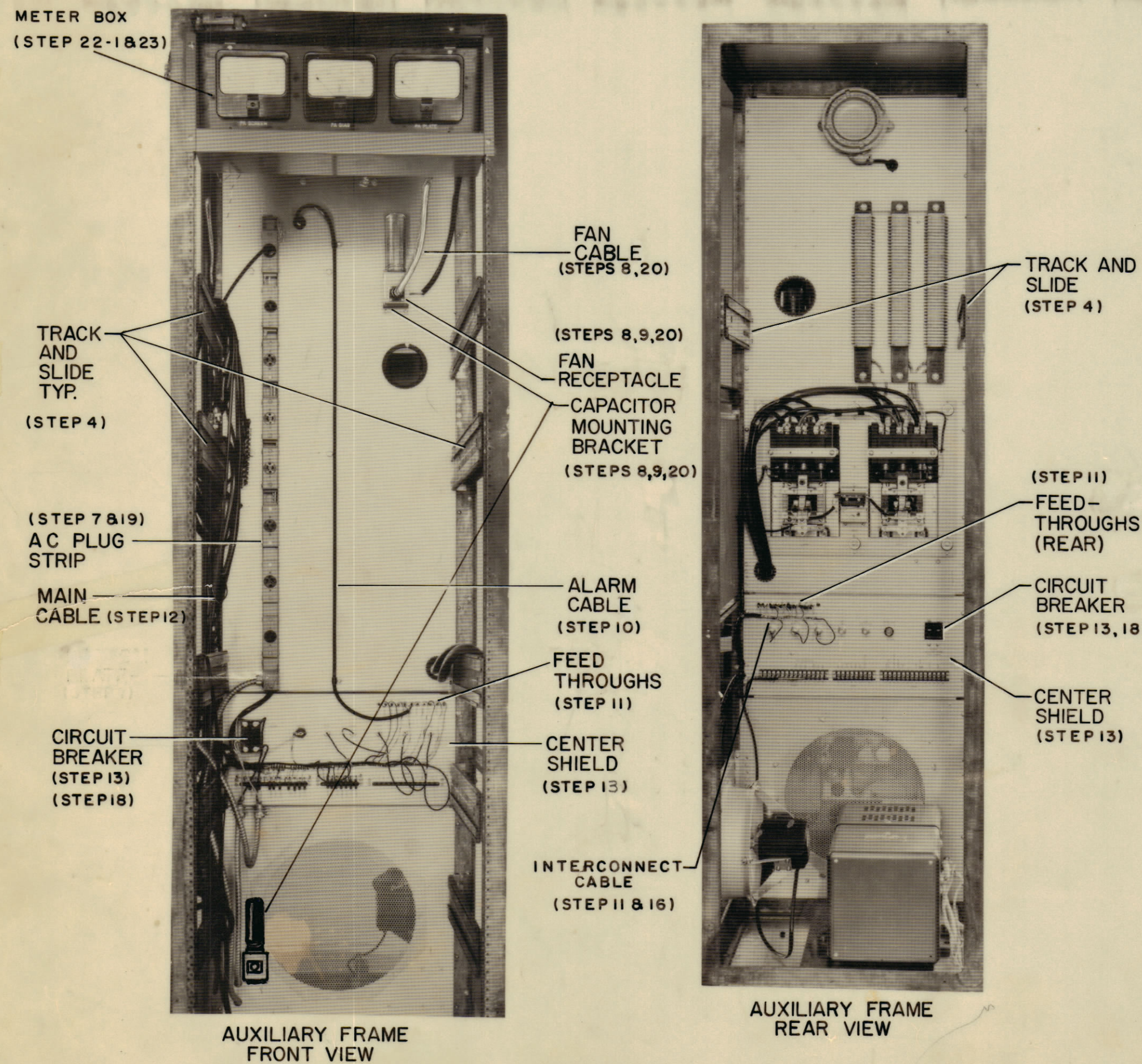


FIG 2

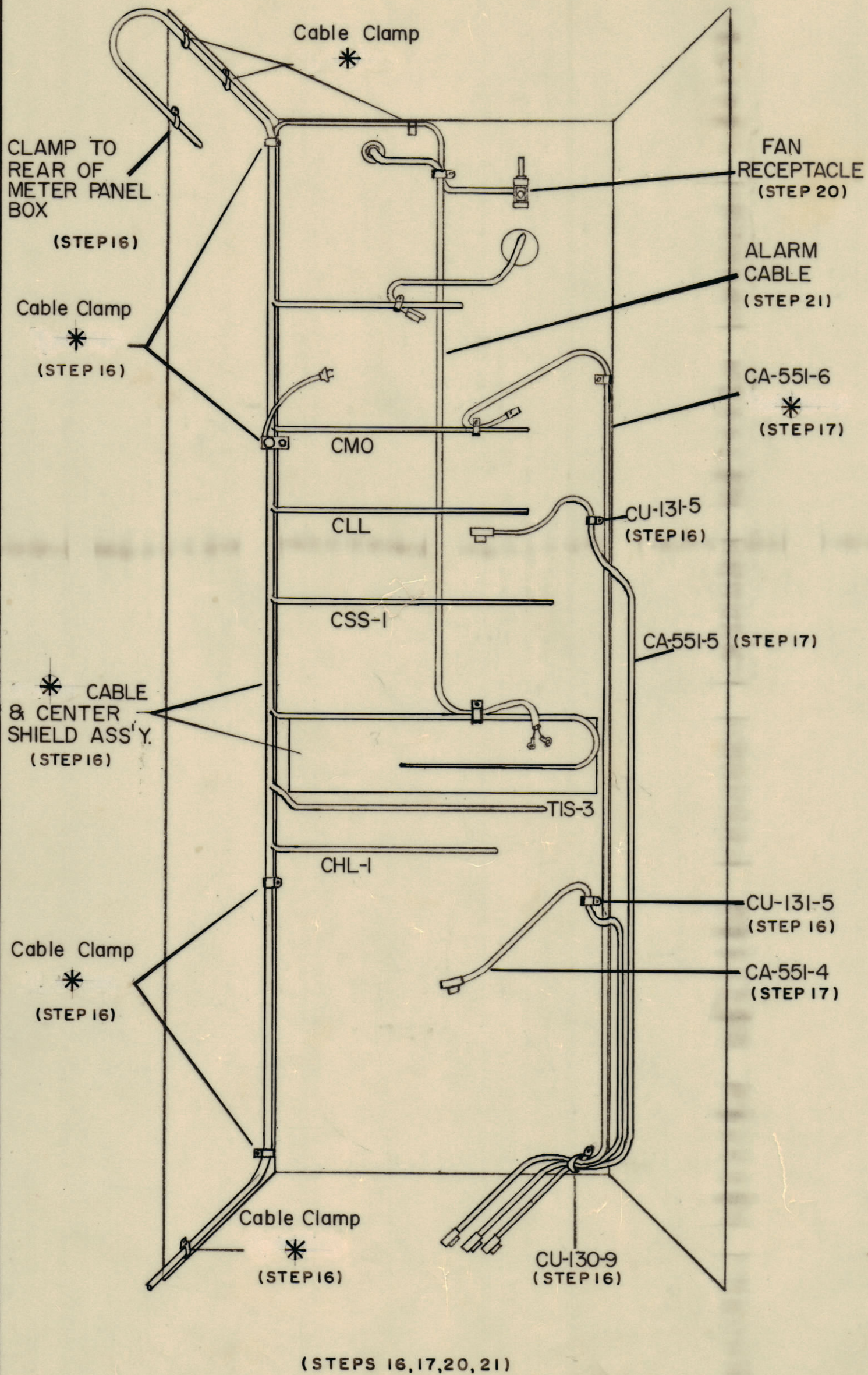
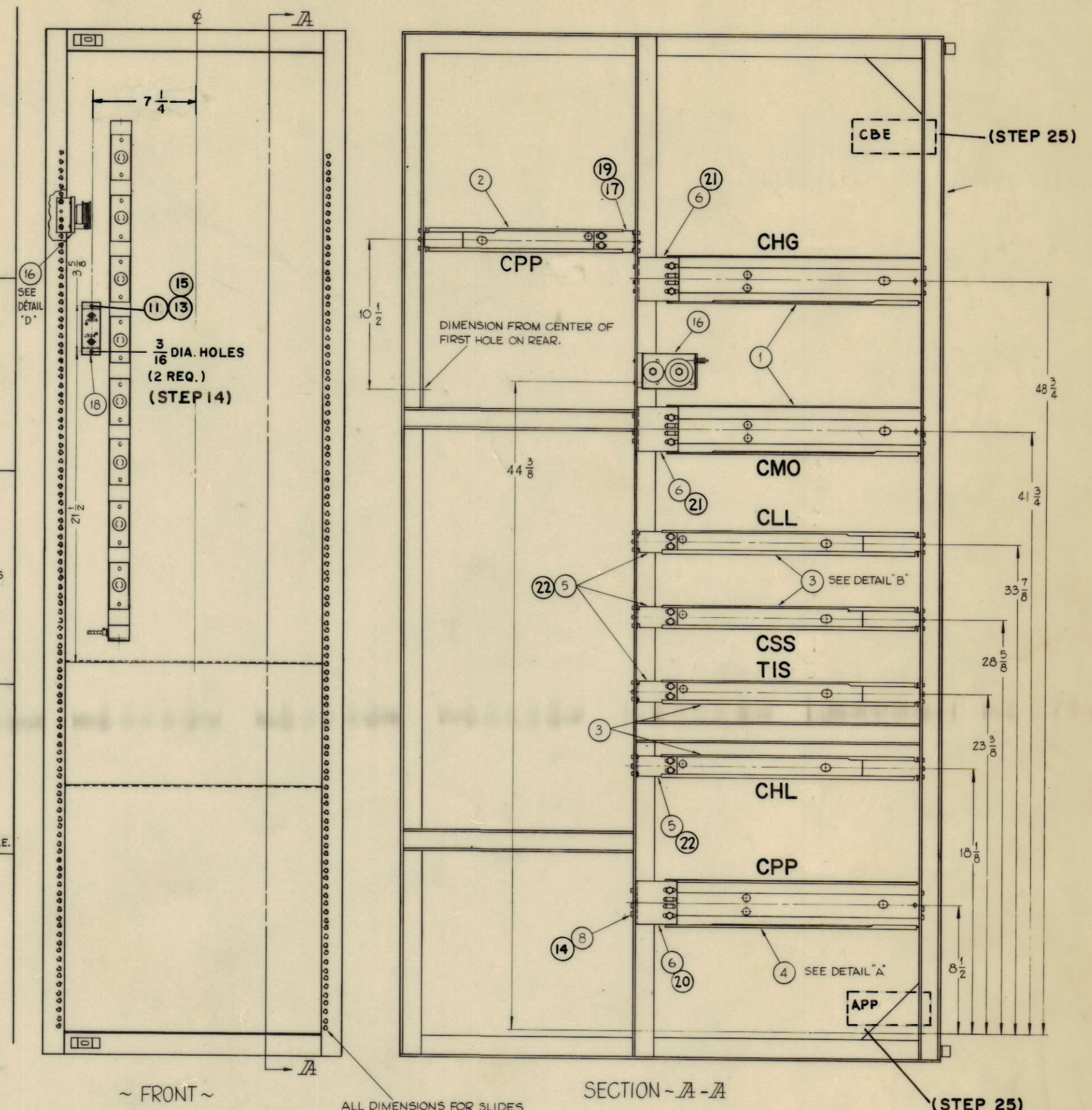
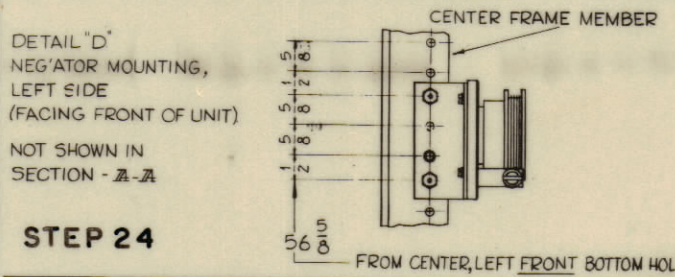
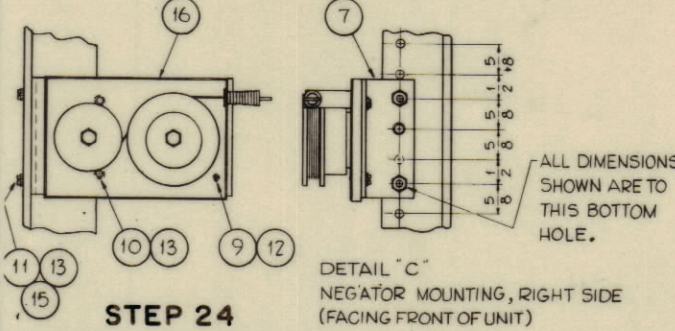
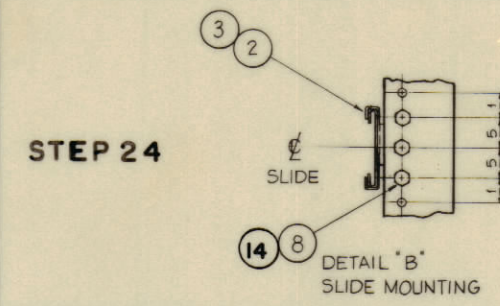
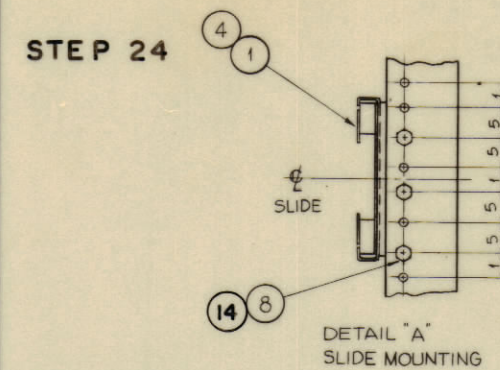


FIG 3

* PART OF MAIN CABLE & CENTER SHIELD ASSEMBLY A2410 OR A4473.



(STEPS 24, 25, 26)

CORRESPONDING ITEM NO. ON KIT PROCEDURE SPEC. (KIT-128-5666) (KIT-156-5796)

| REQ. PER UNIT | ITEM | PART NO. | DESCRIPTION | QTY. | |
|---------------|------|----------|-------------|---------------------------------|--------|
| | 24 | 22 | TK-108-NB | NUT, BAR | 32D |
| | 12 | 21 | TK-107-NB | NUT, BAR | 30D |
| | 6 | 20 | TK-106-NB | NUT, BAR | 31D |
| | 6 | 19 | TK-105-NB | NUT, BAR | 29D |
| | 1 | 18 | A-2048 | ATTENUATOR ASSY. | 33A |
| | 2 | 17 | MS-2482 | BRACKET, EXTENSION (FOR CPP-5) | 29A |
| | 2 | 16 | SP-137-1 | NEGATOR | 34A |
| | 6 | 15 | NTHIO32BNI2 | NUT, HEXAGON, DOUBLE CHAMFER | |
| | 128 | 14 | LWSIOMRN | LOCKWASHER, SPRING TYPE | |
| | 10 | 13 | LWEIOMRN | LOCKWASHER, EXTERNAL TOOTH | |
| | 2 | 12 | LWEO6MRN | LOCKWASHER, EXTERNAL TOOTH | 34F |
| | 6 | 11 | SCBPI032BN8 | SCREW, MACHINE | |
| | 4 | 10 | SCBPI024BN6 | SCREW, MACHINE | 34D |
| | 2 | 9 | SCBP0540BN6 | SCREW, MACHINE | 34E |
| | 128 | 8 | SCHHIO32SN8 | SCREW, HEXAGON HEAD | |
| | 2 | 7 | MS-2470 | BRACKET, NEGATOR MOUNTING | 34B |
| | 6 | 6 | MS-2458 | ADAPTOR, BKT, REAR 3" SLIDE | |
| | 8 | 5 | MS-2457 | ADAPTOR, BKT, REAR 1-3/4" SLIDE | 32A |
| | 1 | 4 | TK-106-18 | SLIDE, STATIONARY | 21, 24 |
| | 4 | 3 | TK-108-18 | SLIDE, TILT | 27, 28 |
| | 1 | 2 | TK-105-14 | SLIDE, TILT | 19, 20 |
| | 2 | 1 | TK-107-18 | SLIDE, TILT | 25, 26 |

STATIONARY AND INTERMEDIATE SECTIONS ONLY. CHASSIS SECTION IS MOUNTED ON RESPECTIVE UNITS

FIG 4

| REQ. PER UNIT | MODEL | SECTION | ASSY. NO. | DATE | TYPE & TEMPER | HEAT TREAT, SPEC. | FINISH & SPEC. NO. |
|---------------|---------|---------|-----------|---------|---------------|-------------------|--------------------|
| 1 | KIT-156 | | | | | | |
| 1 | KIT-128 | | | 4-24-62 | | | |

THE TECHNICAL MATERIEL CORP. MAMARONECK, NEW YORK

INSTALLATION DETAILS

DRAWN: G. J. [Signature] CHECKED: [Signature] FINAL APPROVAL: [Signature]

28 28 ID-277 B

ELEC. DES. APP. MECH. DES. APP. SHEET OF

DEFIANCE NO. 1023 36572

| SYMBOL | ZONE | DESCRIPTION | DATE | CH. NO. | DRAFTS | CHECKER | ENG. APP. |
|--------|------|-------------------------|----------|---------|--------|-------------|-------------|
| B | | DWG UPDATED | 7/18/66 | 16574 | JL | [Signature] | [Signature] |
| A | | DWG UPDATED & CLARIFIED | 11/11/63 | 10562 | 470 | [Signature] | [Signature] |

UNLESS OTHERWISE SPECIFIED: SCALE: DIMENSIONS ARE IN INCHES TOLERANCES ON FRACTIONS ± 1/64 DECIMALS ± .005 ANGLES ± 1/2°

MAXIMUM ALLOWABLE TOLERANCES HAVE BEEN DETERMINED AND ANY DEVIATIONS WILL BE CAUSE FOR REJECTION. REMOVE ALL BURRS & SHARP EDGES

TMC FORM NO. 111