

NOTICE TO PERSONS RECEIVING THIS DRAWING

THE TECHNICAL MATERIEL CORPORATION claims proprietary right in the material disclosed hereon. This drawing is issued in confidence for engineering information only and may not be reproduced or used to manufacture anything shown hereon without permission from THE TECHNICAL MATERIEL CORPORATION to the user. This drawing is loaned for mutual assistance and is subject to recall at any time.

Property of:
 THE TECHNICAL MATERIEL CORPORATION
 MAMARONECK, NEW YORK

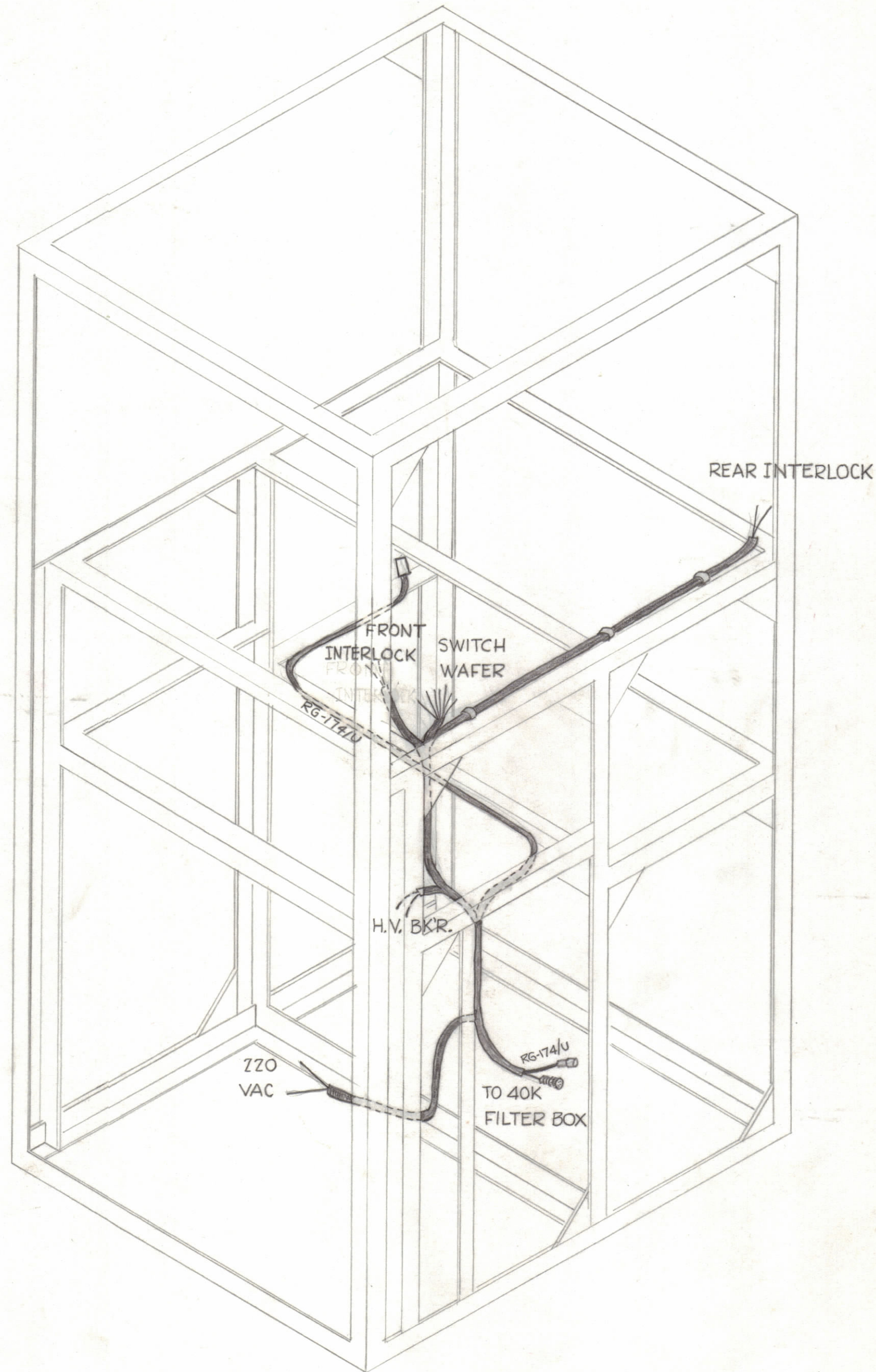


FIGURE 4A

| SYM | ZONE | DESCRIPTION | DATE | CH. NO. | DRAFTS | CHECKER | ENG. APP. |
|-----------------------------|------|-------------|--|---------|---------------|---------|-----------|
| UNLESS OTHERWISE SPECIFIED: | | | SCALE | | | | |
| DIMENSIONS ARE IN INCHES | | | MAXIMUM ALLOWABLE TOLERANCES HAVE BEEN DETERMINED AND ANY DEVIATIONS WILL BE CAUSE FOR REJECTION. REMOVE ALL BURRS & SHARP EDGES | | | | |
| TOLERANCES ON | | | | | | | |
| FRACTIONS ± 1/64 | | | DECIMALS ± .005 | | ANGLES ± 1/2° | | |

| REQ. PER UNIT | MODEL | SECTION | ASS'Y. NO. | DATE |
|---------------|---------|---------|------------|--------|
| 1 | GPT-10K | | | 7-5-61 |

| REQ. ITEM | PART NO. | DESCRIPTION | SYMBOL |
|--|----------|-------------------|-----------------|
| THE TECHNICAL MATERIEL CORP. MAMARONECK, NEW YORK | | | |
| STOCK SIZE | | | |
| CABLE INSTALLATION | | | |
| 10KW FIELD MODIFICATION | | | |
| DRAWN | | CHECKED | FINAL APPROVAL |
| RB | | ALC | RB |
| TYPE & TEMPER | | HEAT TREAT. SPEC. | |
| FINISH & SPEC. NO. | | ELEC. DES. APP. | MECH. DES. APP. |
| | | SHEET OF | |
| | | ID-248 | |