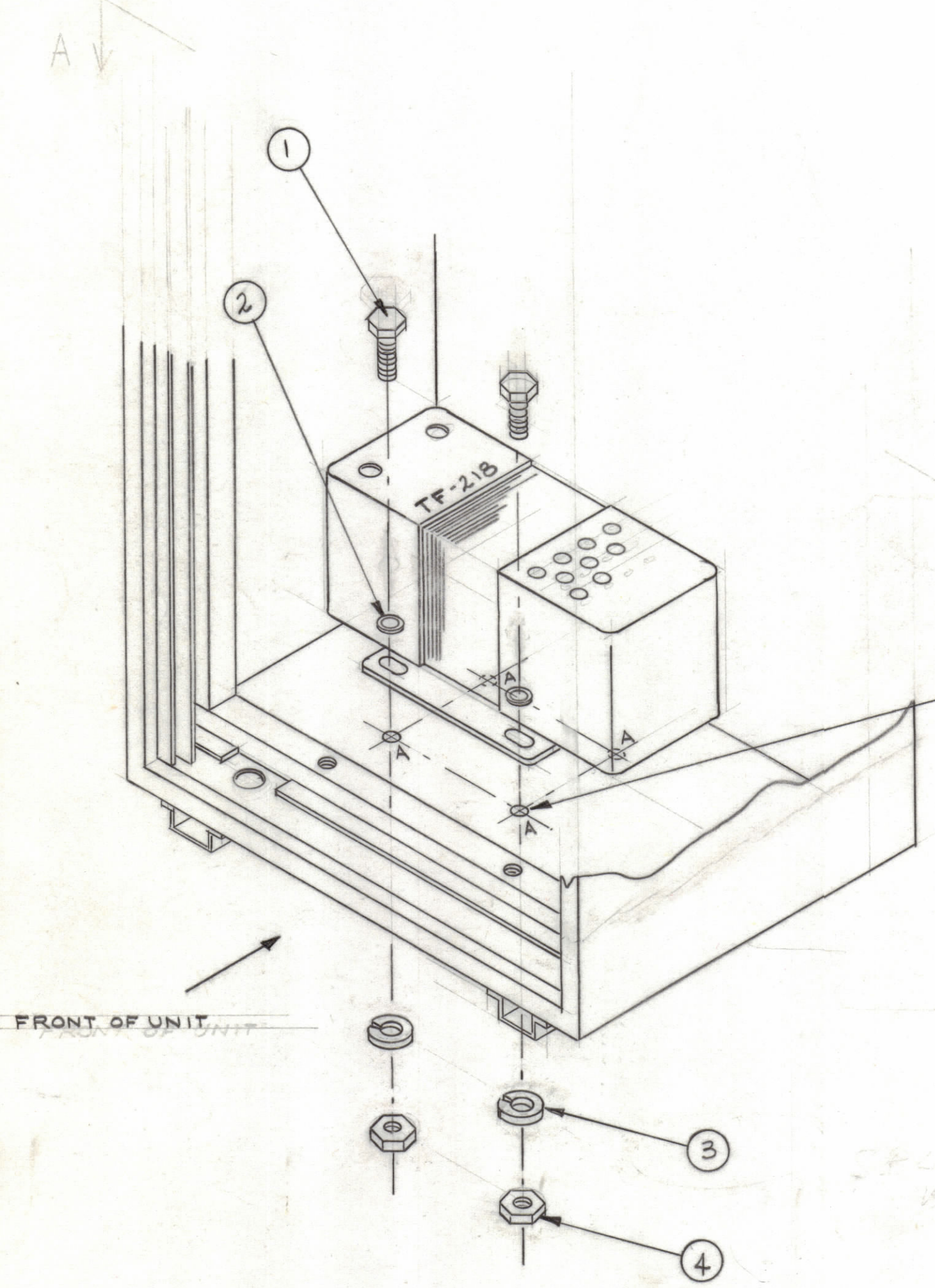
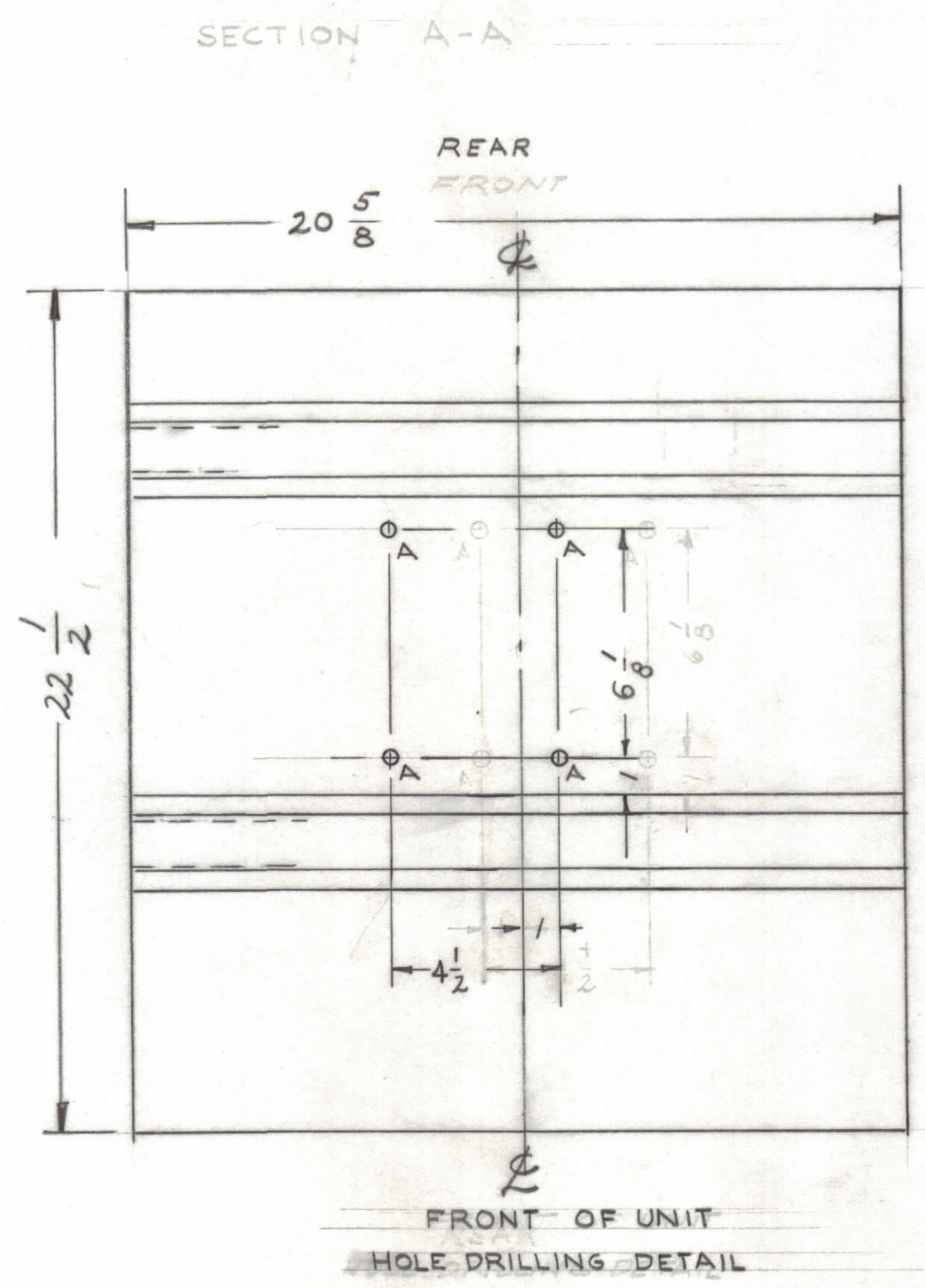


**NOTICE TO PERSONS RECEIVING THIS DRAWING**  
 THE TECHNICAL MATERIEL CORPORATION claims proprietary right in the material disclosed hereon. This drawing is issued in confidence for engineering information only and may not be reproduced or used to manufacture anything shown hereon without permission from THE TECHNICAL MATERIEL CORPORATION to the user. This drawing is loaned for mutual assistance and is subject to recall at any time.

Property of:  
**THE TECHNICAL MATERIEL CORPORATION**  
 MAMARONECK, NEW YORK



SEE HOLE DRILLING  
 DETAIL FOR MOUNTING  
 TMC PART # TF-218, 218



A -  $\frac{3}{8}$  DIA. HOLES 4 REQ'D.  
 TO MOUNT (TF-218)

4	4	NTH 3/18 BC16	NUT, HEX
4	3	LWS 31 HBN	WASHER, SPLIT
4	2	FW 31 HBN	WASHER FLAT
4	1	SCHH 3/18 BNS	SCREW, MACHINE, HEX HEAD

SYM	ZONE	DESCRIPTION	DATE	CH. NO.	DRAFTS	CHECKER	ENG. APP.	
UNLESS OTHERWISE SPECIFIED: DIMENSIONS ARE IN INCHES TOLERANCES ON FRACTIONS $\pm 1/64$ DECIMALS $\pm .005$ ANGLES $\pm 1/2^\circ$			SCALE <b>NTS</b> MAXIMUM ALLOWABLE TOLERANCES HAVE BEEN DETERMINED AND ANY DEVIATIONS WILL BE CAUSE FOR REJECTION. REMOVE ALL BURRS & SHARP EDGES					

2	SYM-1023	C # 1	3/1/61
REQ. PER UNIT	MODEL	SECTION	ASS'Y. NO.
			DATE

THE TECHNICAL MATERIEL CORP. MAMARONECK, NEW YORK		SYN 1023 TF-218 INSTALLATION	
STOCK SIZE		BOTTOM OF REAR RADIUS (CRK -16)	
MATERIAL		10B1660	J.O.S.
TYPE & TEMPER		DRAWN	CHECKED
FINISH & SPEC. NO.		F.O.S.	
ELEC. DES. APP.		MECH. DES. APP.	
SHEET		OF	
ID-245			