

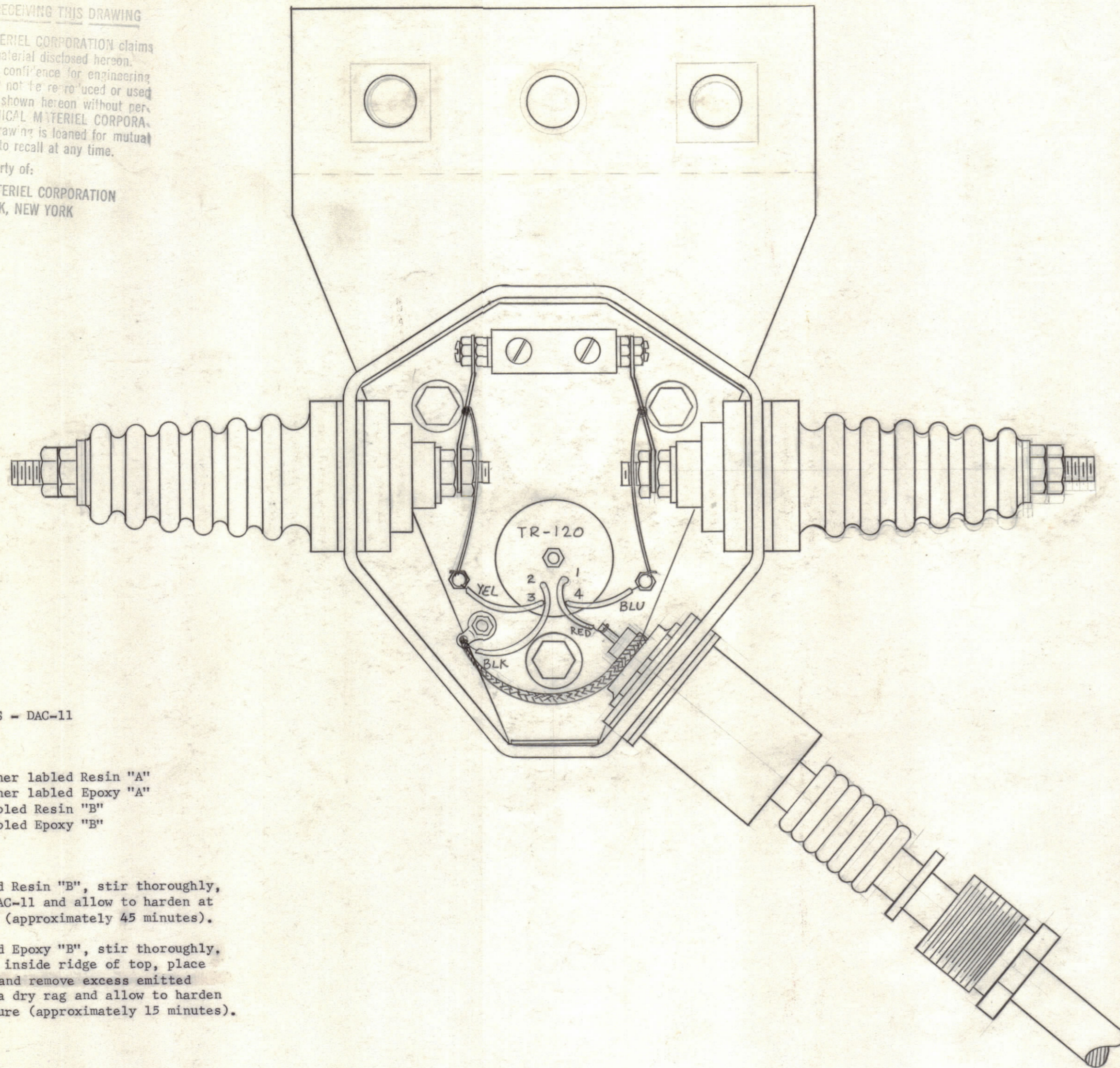
IF IT IS FOUND DESIRABLE TO CHANGE ANY TOLERANCE OR OTHER DETAIL SPECIFIED ON THIS DRAWING NOTIFY THE PURCHASER PROMPTLY.

MAXIMUM ALLOWABLE TOLERANCES HAVE BEEN DETERMINED AND DEVIATIONS WILL BE CAUSE FOR REJECTION. REMOVE ALL BURRS AND SHARP EDGES.

NOTICE TO PERSONS RECEIVING THIS DRAWING

THE TECHNICAL MATERIEL CORPORATION claims proprietary right in the material disclosed hereon. This drawing is issued in confidence for engineering information only and may not be reproduced or used to manufacture anything shown hereon without permission from THE TECHNICAL MATERIEL CORPORATION to the user. This drawing is loaned for mutual assistance and is subject to recall at any time.

Property of:
THE TECHNICAL MATERIEL CORPORATION
MAMARONECK, NEW YORK



POTTING INSTRUCTIONS - DAC-11

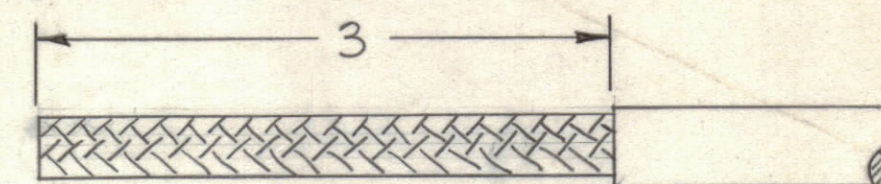
Materials Supplied:

1. one metal container labeled Resin "A"
2. one metal container labeled Epoxy "A"
3. one glass jar labeled Resin "B"
4. one glass jar labeled Epoxy "B"

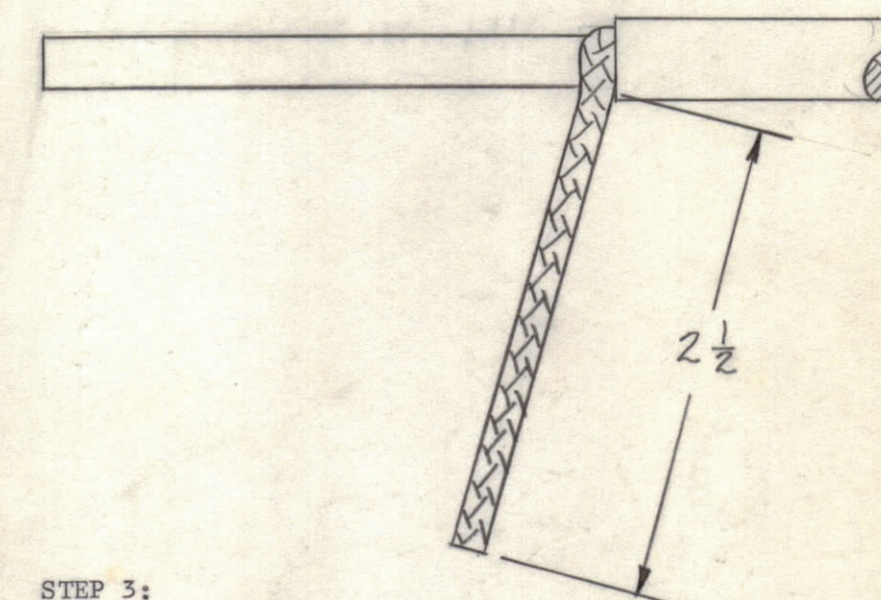
Directions:

1. Mix Resin "A" and Resin "B", stir thoroughly, then pour into DAC-11 and allow to harden at room temperature (approximately 45 minutes).
2. Mix Epoxy "A" and Epoxy "B", stir thoroughly. Apply mixture to inside ridge of top, place top in position and remove excess emitted from sides with a dry rag and allow to harden at room temperature (approximately 15 minutes).

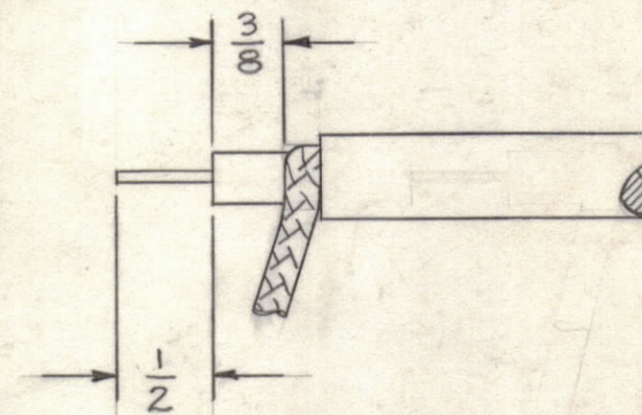
STEP 1:



STEP 2:



STEP 3:



ID-235

ISSUE	ITEM	CHANGED FROM	DATE	CH. NO.	DRAFTS	CHECKER	ENG. APP.
TOLERANCES				SCALE:			
ALL OTHERS	DEC. DIM. ±	DRILL, PUNCH, COMMERCIAL STOCK SIZES AND MANUFACTURERS TOLERANCES ARE NOT INCLUDED.					
	FRAC. DIM. ±						
	ANGULAR DIM. ±						

REQ. PER UNIT	MODEL	PROJECT NO.	ASSY. NO.	DATE
	USED ON			

REQ. ITEM	PART NO.	DESCRIPTION	SYMBOL
		THE TECHNICAL MATERIEL CORP. MAMARONECK, NEW YORK	
		STOCK SIZE	
		DAC-11	
		MATERIAL	WEIGHT PER PC.
		TYPE & TEMPER	
		DRAWN	ELEC. DES. APP. MECH. DES. APP.
		MJT 10-26-57	
		CHECKED	FINAL APPROVAL
			ID-235
		FINISH & SPEC. NO.	