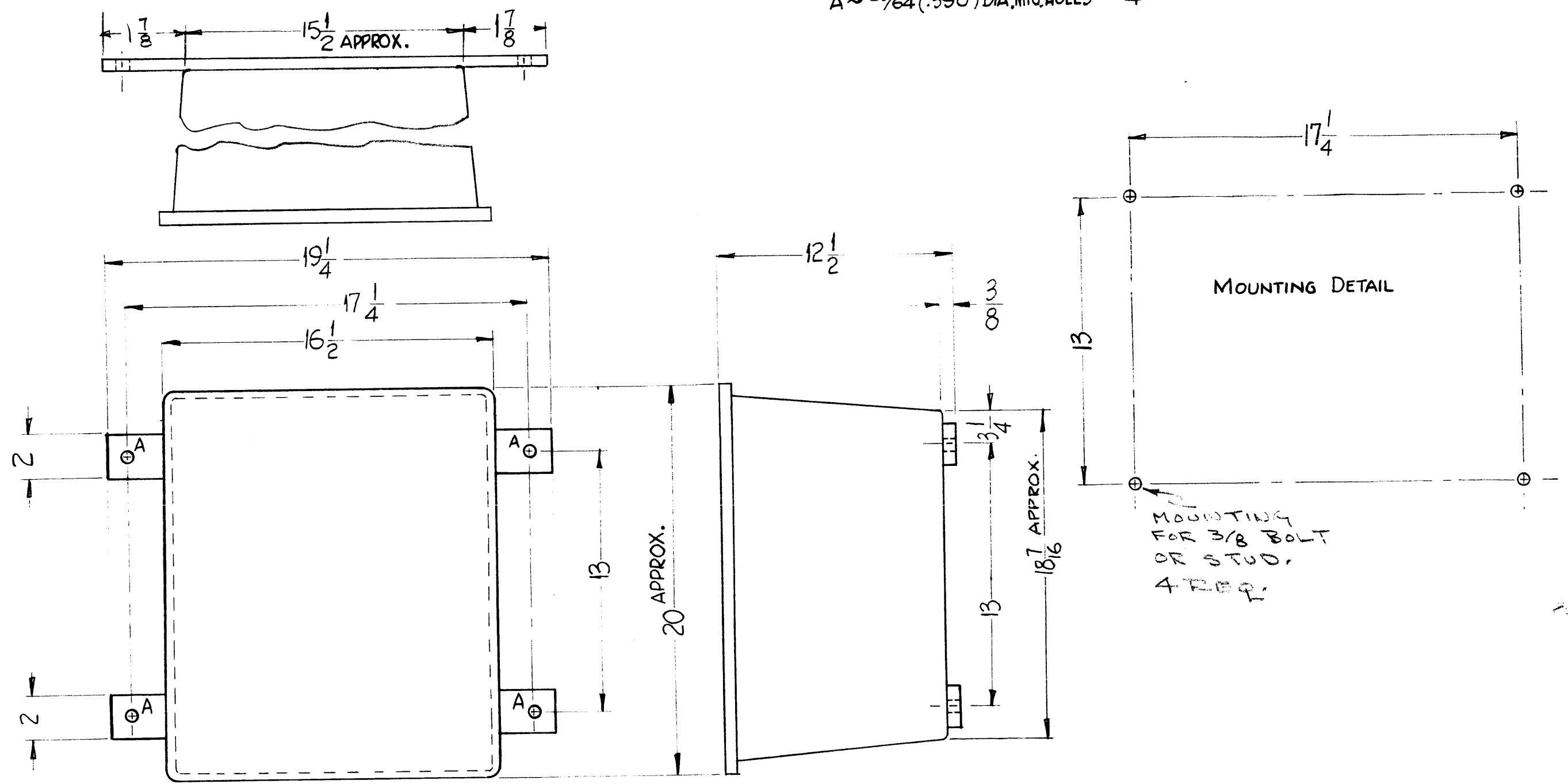


ID-233 A

HOLES
 A $\approx 25/64$ (.390) DIA. MTG. HOLES REQ. 4



SYMBOL	DESCRIPTION	DATE	CH. NO.	DRAFTS	CHECKER	ENG. APP.
A	MTG. DETAIL ADDED REDRAWN	12/28/60	3843	DM	[Signature]	[Signature]
UNLESS OTHERWISE SPECIFIED:						
DIMENSIONS ARE IN INCHES						
TOLERANCES ON FRACTIONS $\pm 1/64$ DECIMALS $\pm .005$ ANGLES $\pm 1/2^\circ$						
SCALE: DO NOT SCALE						
MAXIMUM ALLOWABLE TOLERANCES HAVE BEEN DETERMINED AND ANY DEVIATIONS WILL BE CAUSE FOR REJECTION. REMOVE ALL BURRS AND SHARP EDGES						

REQ. PER UNIT	MODEL	SECTION	ASS'Y. NO.	DATE
1	TU-2	ATS-50/70		12-27-60
USED ON				

REQ.	ITEM	PART NO.	DESCRIPTION		SYMBOL
			THE TECHNICAL MATERIEL CORP. MAMARONECK, NEW YORK		
			STOCK SIZE		
			DIMENSIONAL OUTLINE		
			TU-2 /ATS -50-70		
			MATERIAL		
			TYPE & TEMPER	HEAT TREAT. SPEC.	
			DRAWN	CHECKER	FINAL APPROVAL
			FINISH & SPEC. NO.		
			ELEC. DES. APP.	MECH. DES. APP.	
			ID-233		A