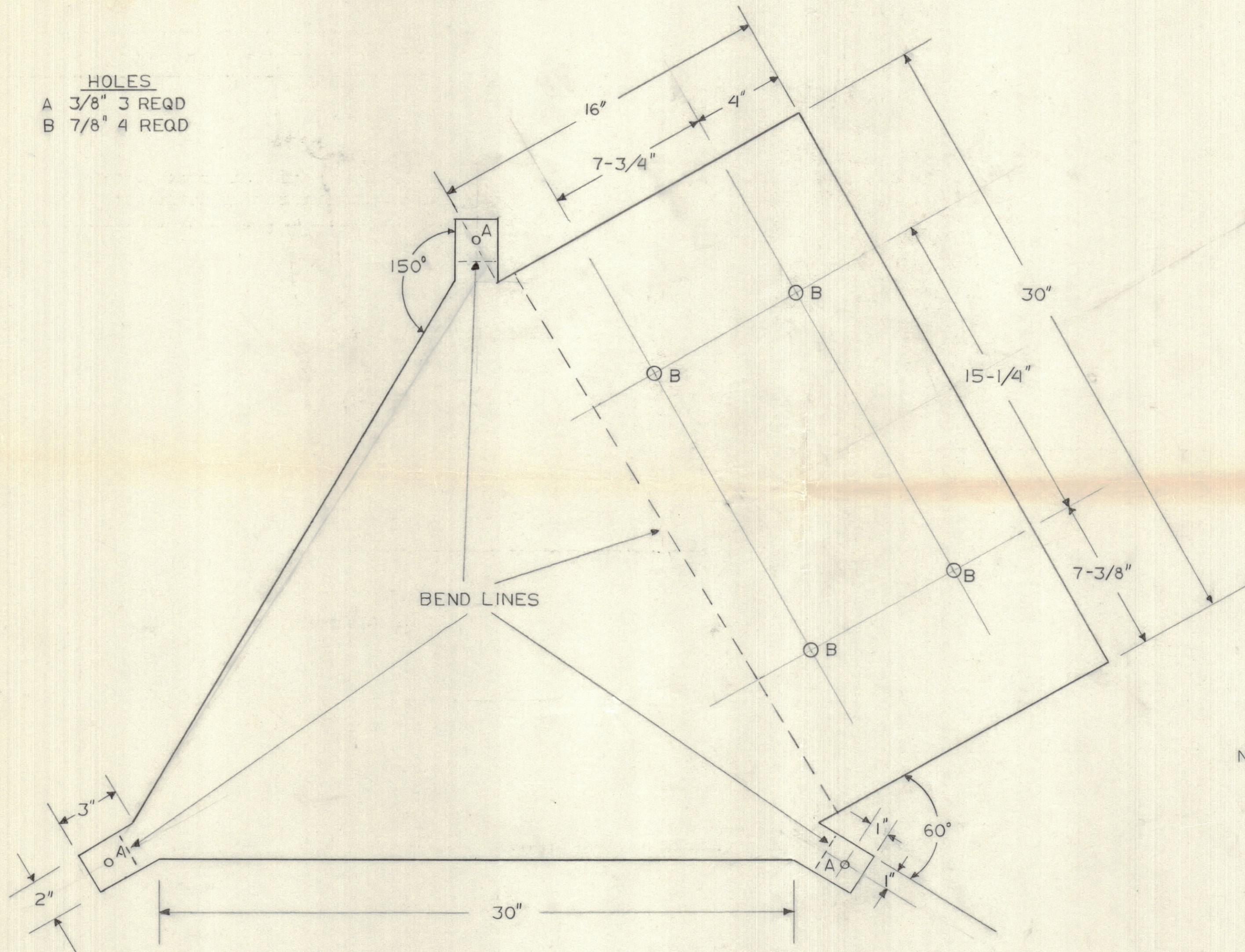


IF IT IS FOUND DESIRABLE TO CHANGE ANY TOLERANCE OR OTHER DETAIL SPECIFIED ON THIS DRAWING NOTIFY THE PURCHASER PROMPTLY.		DIMENSIONS IN INCHES UNLESS OTHERWISE SPECIFIED					
MAXIMUM ALLOWABLE TOLERANCES HAVE BEEN DETERMINED AND DEVIATIONS WILL BE CAUSE FOR REJECTION. REMOVE ALL BURRS AND SHARP EDGES.							
ISSUE	ITEM	CHANGED FROM	DATE	CN. NO.	DRAFTS	CHECKER	ENG. APP.

REQ.	ITEM	PART NO.	DESCRIPTION	SYMBOL
------	------	----------	-------------	--------

HOLES
 A 3/8" 3 REQD
 B 7/8" 4 REQD



ID-10586 \emptyset

NOTE: BEND ALL TABS ON BEND LINES DOWN 90°, RADIUS NOT CRITICAL.

TOLERANCES		SCALE:
ALL OTHERS	DEC. DIM. \pm FRAC. DIM. \pm ANGULAR DIM. \pm	DRILL, PUNCH, COMMERCIAL STOCK SIZES AND MANUFACTURERS TOLERANCES ARE NOT INCLUDED.

MODEL	C-10756	PROJECT NO.	ASS'Y. NO.	DATE	30 MAR 67
USED ON					

1/4" PLATE		TMC (Canada) LIMITED	
STOCK SIZE		OTTAWA ONTARIO	
COPPER		GROUND PLATE	
MATERIAL		VERTICAL RADIATOR	
WEIGHT PER PC.		LANGER	
TYPE & TEMPER		DRAWN	ELEC. DES. APP.
HEAT TREAT. SPEC.		CHECKED	MECH. DES. APP.
FINISH & SPEC. NO.		FINAL APPROVAL	
		ID-10586 \emptyset	