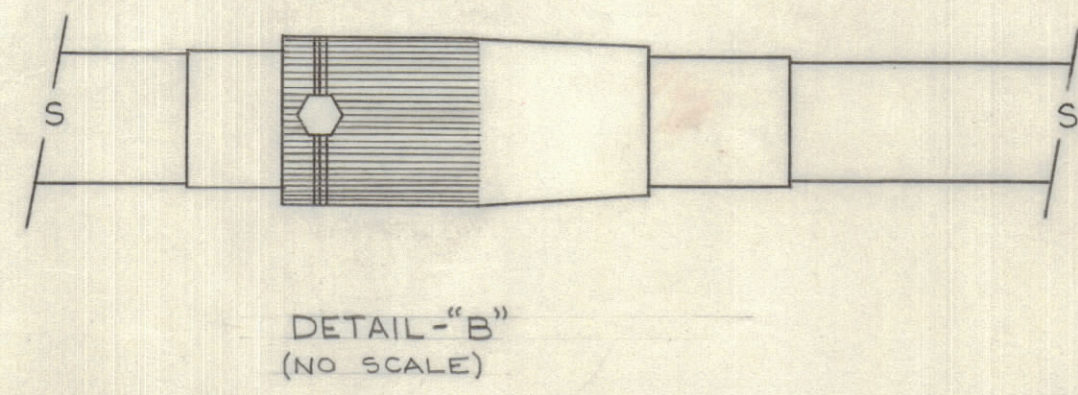
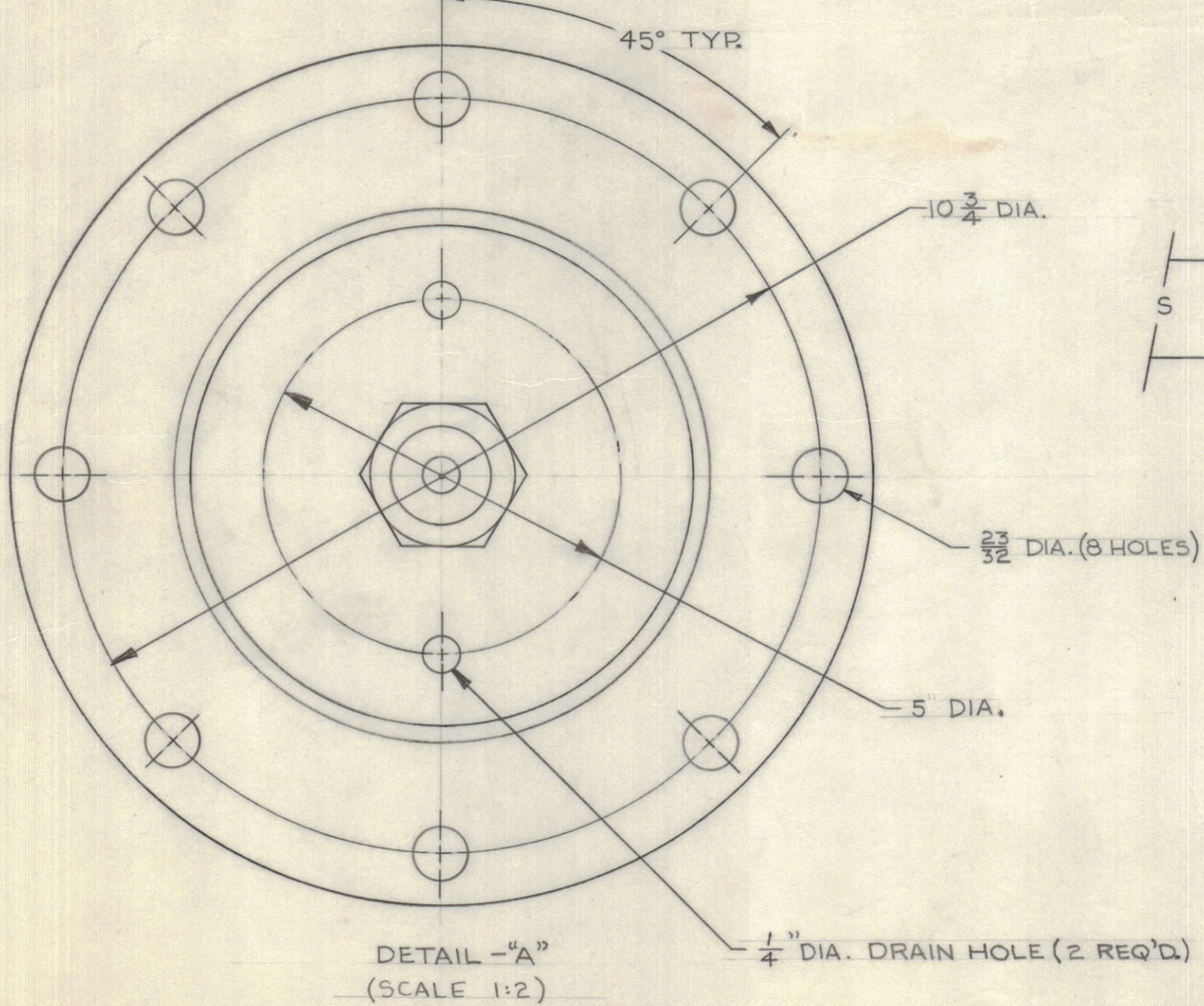
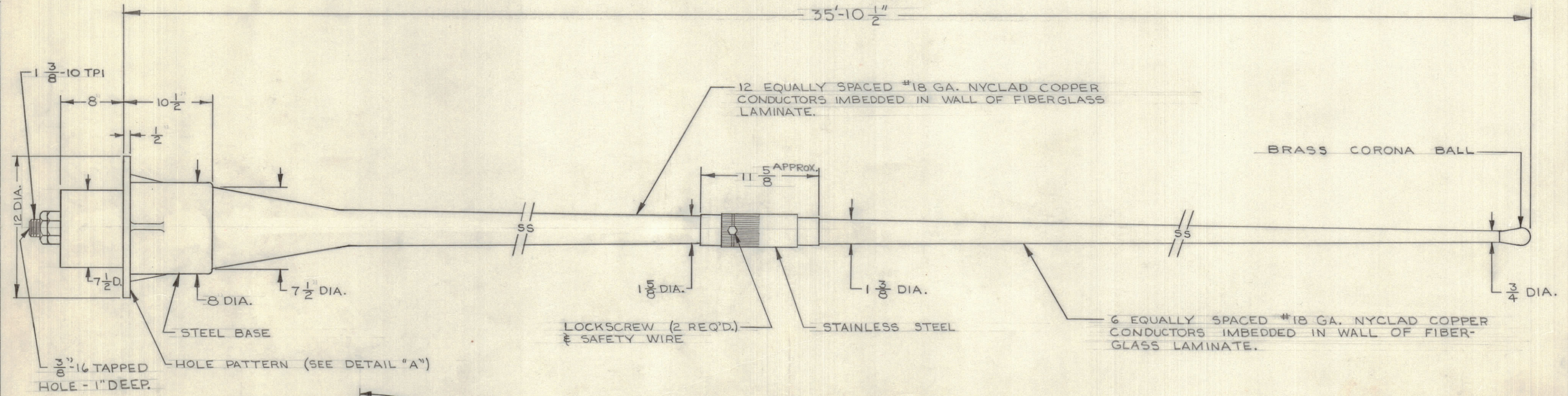


IF IT IS FOUND DESIRABLE TO CHANGE ANY TOLERANCE OR OTHER DETAIL SPECIFIED ON THIS DRAWING NOTIFY THE PURCHASER PROMPTLY.		DIMENSIONS IN INCHES UNLESS OTHERWISE SPECIFIED					
MAXIMUM ALLOWABLE TOLERANCES HAVE BEEN DETERMINED AND DEVIATIONS WILL BE CAUSE FOR REJECTION. REMOVE ALL BURRS AND SHARP EDGES.							
ISSUE	ITEM	CHANGED FROM	DATE	CN. NO.	DRAFTS	CHECKER	ENG. APP.
∅		REL TO PROD			AP		
A		REVISED			AP		

REQ.	ITEM	PART NO.	DESCRIPTION	SYMBOL
------	------	----------	-------------	--------

FOR SALES DEPT. USE ONLY



ID10530 A

MANUFACTURER: 910045-41

STOCK SIZE		TMC (Canada) LIMITED OTTAWA ONTARIO	
MATERIAL		35' FIBERGLASS WHIP	
WEIGHT PER PC.		ANTENNA	
TYPE & TEMPER		GAM	
HEAT TREAT. SPEC.		DRAWN	ELEC. DES. APP. MECH. DES. APP.
FINISH & SPEC. NO.		CHECKED	FINAL APPROVAL
		ID10530 A	

TOLERANCES		SCALE: N.T.S.
ALL OTHERS	DEC. DIM. ± FRAC. DIM. ± ANGULAR DIM. ±	DRILL, PUNCH, COMMERCIAL STOCK SIZES AND MANUFACTURERS TOLERANCES ARE NOT INCLUDED.

MODEL	TE 1562 (DOT)	ASS'Y. NO.	MAY 5/66
USED ON			