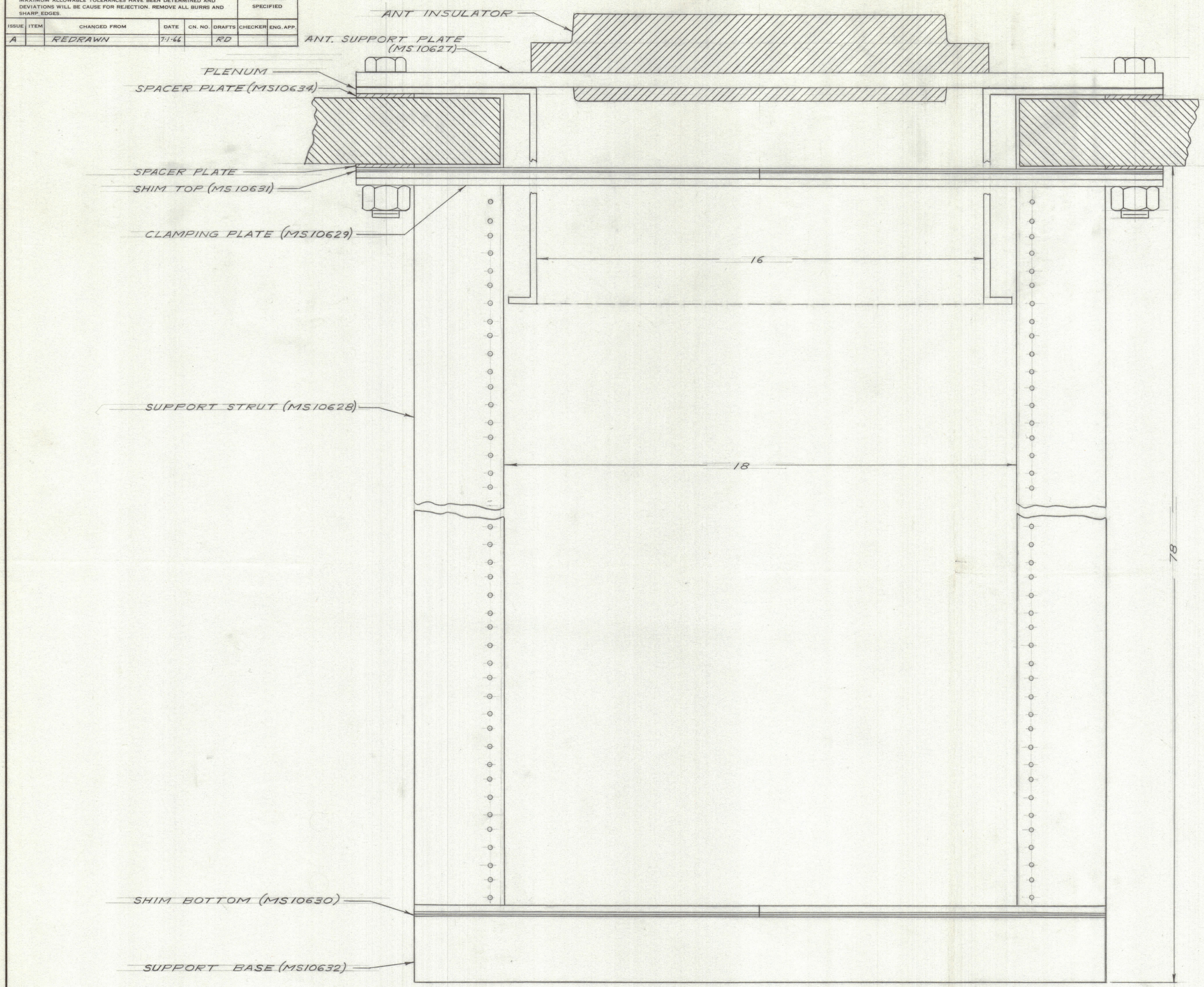


IF IT IS FOUND DESIRABLE TO CHANGE ANY TOLERANCE OR OTHER DETAIL SPECIFIED ON THIS DRAWING NOTIFY THE PURCHASER PROMPTLY.

MAXIMUM ALLOWABLE TOLERANCES HAVE BEEN DETERMINED AND DEVIATIONS WILL BE CAUSE FOR REJECTION. REMOVE ALL BURRS AND SHARP EDGES.

ISSUE	ITEM	CHANGED FROM	DATE	CN. NO.	DRAFTS	CHECKER	ENG. APP.
A		REDRAWN	7-1-66		RD		

REQ.	ITEM	PART NO.	DESCRIPTION	SYMBOL
------	------	----------	-------------	--------



THE ANTENNA SUPPORT STRUCTURE IS CONSTRUCTED TO ALLOW ADJUSTMENT IN ANY DIRECTION SO AS TO PRESENT NO INTERFACE PROBLEMS WHEN MOUNTING THE ANTENNA TUNNING UNIT.

HORIZONTAL ADJUSTMENT
 TO ALIGN THE SUPPORT STRUTS (MS10628) TO MORE ACCURATELY CENTER THE ANTENNA FEED-THRU CONNECTION, LOOSEN THE 16 BOLTS THAT PASS THROUGH THE ROOF FROM THE ANTENNA SUPPORT PLATE (MS10627) TO THE CLAMPING PLATE (MS10629). A Mallet or HAMMER MAY BE USED TO CHANGE THE POSITION OF THE SUPPORT STRUTS IN RELATION TO THE ANTENNA FEED-THRU CONNECTION. TIGHTEN THE 16 BOLTS AS TIGHT AS POSSIBLE BY HAND USING A WRENCH NOT MORE THAN 16" LONG.

VERTICAL ADJUSTMENT
 TO ADJUST THE SUPPORT STRUTS (MS10628) UP, REMOVE SHIMS (MS10631) FROM ABOVE THE TOP SUPPORT STRUT PLATES AND ADD SHIMS (MS10630) BELOW THE BOTTOM SUPPORT STRUT PLATES. ADDITIONAL UPPER AND LOWER SHIMS ARE PROVIDED IN THICKNESSES OF 1/32" AND 1/16". IT WILL BE NECESSARY TO REMOVE THE UPPER AND LOWER BOLTS DURING VERTICAL ADJUSTMENTS. IT IS RECOMMENDED THAT ONLY ONE SUPPORT STRUT BE UNBOLTED AT A TIME. TO ADJUST THE SUPPORT STRUTS DOWN, REVERSE THE ABOVE PROCEDURE. IT WILL BE NOTED THAT SHIMS (MS10631) FOR THE UPPER REAR OF THE STRUCTURE HAVE ONE LEG NARROWER THAN THE OTHER. THE NARROW LEG IS PLACED TOWARD THE WALL.

TOLERANCES		SCALE:
ALL	DEC. DIM. ±	DRILL, PUNCH, COMMERCIAL STOCK
OTHERS	FRAC. DIM. ±	SIZES AND MANUFACTURERS
	ANGULAR DIM. ±	TOLERANCES ARE NOT INCLUDED.

CSH 10001	029/66	17-9-65
MODEL	PROJECT NO.	ASS'Y. NO.
		DATE

TMC (Canada) LIMITED OTTAWA ONTARIO			
ANTENNA SUPPORT STRUCTURE			
STOCK SIZE	WEIGHT PER PC	TYPE & TEMPER	HEAT TREAT SPEC.
		DRAWN	ELEC. DES. APP.
		CHECKED	MECH. DES. APP.
FINISH & SPEC. NO.			FINAL APPROVAL
			1010497 A