

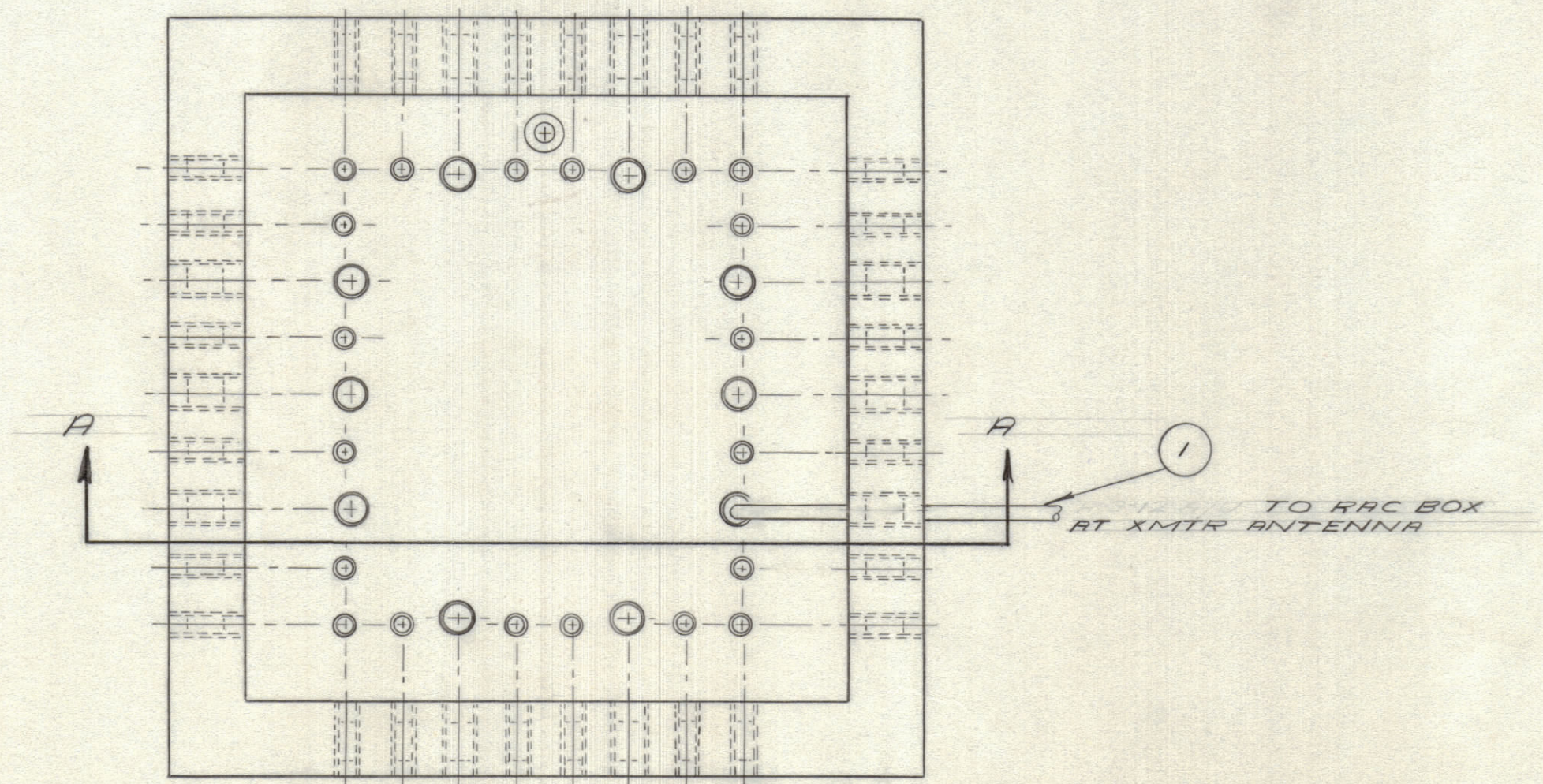
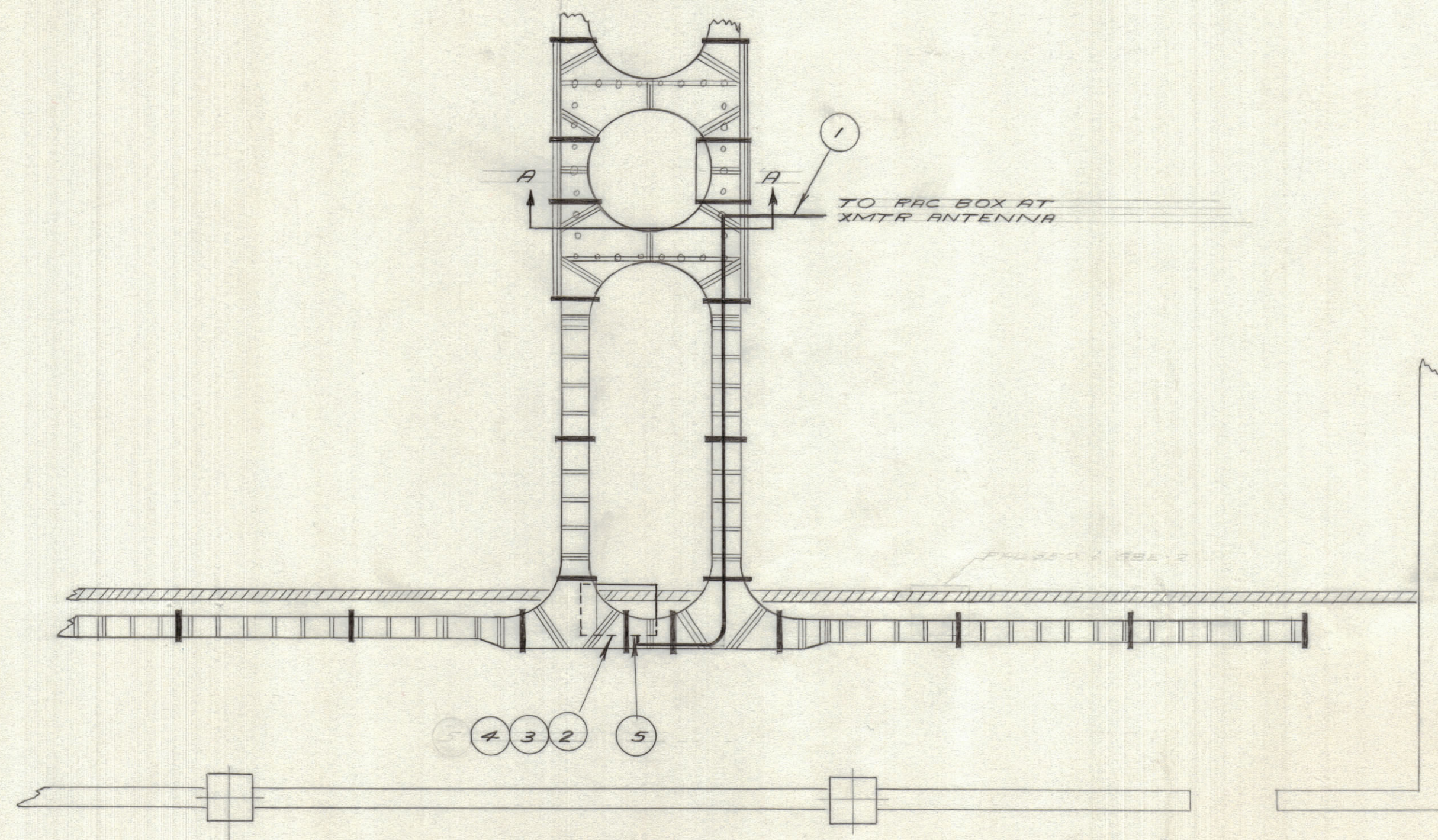
IF IT IS FOUND DESIRABLE TO CHANGE ANY TOLERANCE OR OTHER DETAIL SPECIFIED ON THIS DRAWING NOTIFY THE PURCHASER PROMPTLY.

MAXIMUM ALLOWABLE TOLERANCES HAVE BEEN DETERMINED AND DEVIATIONS WILL BE CAUSE FOR REJECTION. REMOVE ALL BURRS AND SHARP EDGES.

DIMENSIONS IN INCHES UNLESS OTHERWISE SPECIFIED

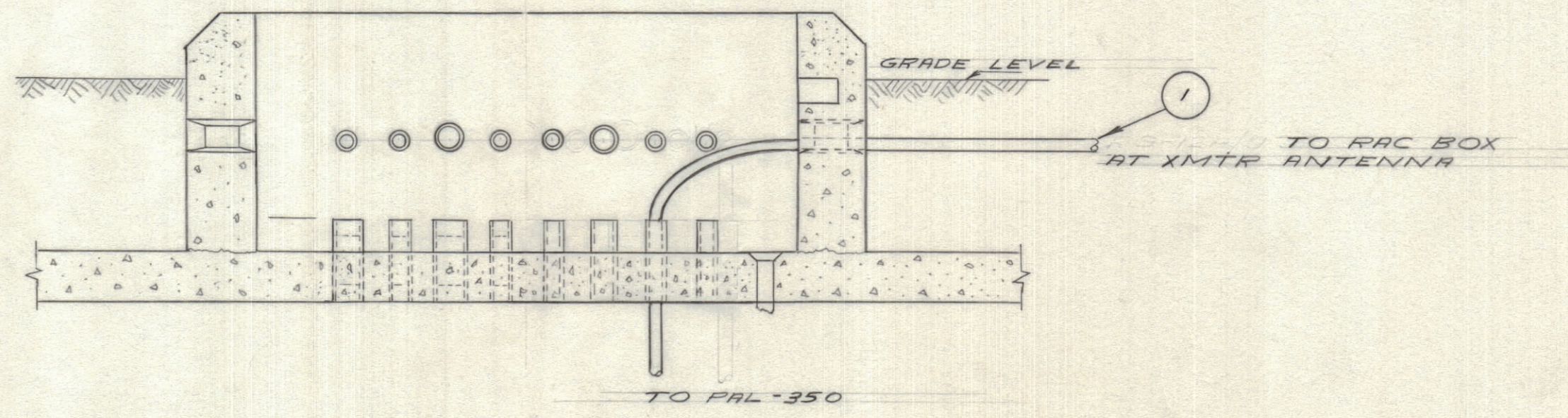
ISSUE	ITEM	CHANGED FROM	DATE	CN. NO.	DRAFTS	CHECKER	ENG. APP.

REQ.	ITEM	PART NO.	DESCRIPTION	SYMBOL
1	RG-12 A/U		CORXIAL CABLE, ARMOURIED	
2	PAL-350		LINEAR POWER AMPLIFIER	
3	SBE-2		TRANSMITTING MODE SELECTOR	
4	FL259A-TEF		CONNECTOR, CORXIAL, VHF	
5	CA384-36C		CABLE ASSY, PSP-350 TO SBE-2, INTERCONNECT	



PLAN OF CABLE ENTRY HATCH ABOVE ROOF

SCALE: 1/2" = 1'0"



SECTION "AA"

SECTION THROUGH CABLE ENTRY HATCH

SCALE: 1/2" = 1'0"

REF: DND JOB DWG NO: 45K-1-5-30

TOLERANCES		SCALE:
ALL OTHERS	DEC. DIM. ± FRAC. DIM. ± ANGULAR DIM. ±	DRILL, PUNCH, COMMERCIAL STOCK SIZES AND MANUFACTURERS TOLERANCES ARE NOT INCLUDED.

MODEL	PROJECT NO.	ASSY. NO.	DATE
	013/64		29-7-64

TMC (Canada) LIMITED			
STOCK SIZE		OTTAWA ONTARIO	
CABLE TRAY LAYOUT			
(BC CIVIL DEFENCE)			
MATERIAL	WEIGHT PER PC	R DES.	MECH. DES. APP.
TYPE & TEMPER		DRAWN	ELEC. DES. APP.
HEAT TREAT. SPEC.		CHECKED	FINAL APPROVAL
FINISH & SPEC. NO.		HT 205 / 1D10325	