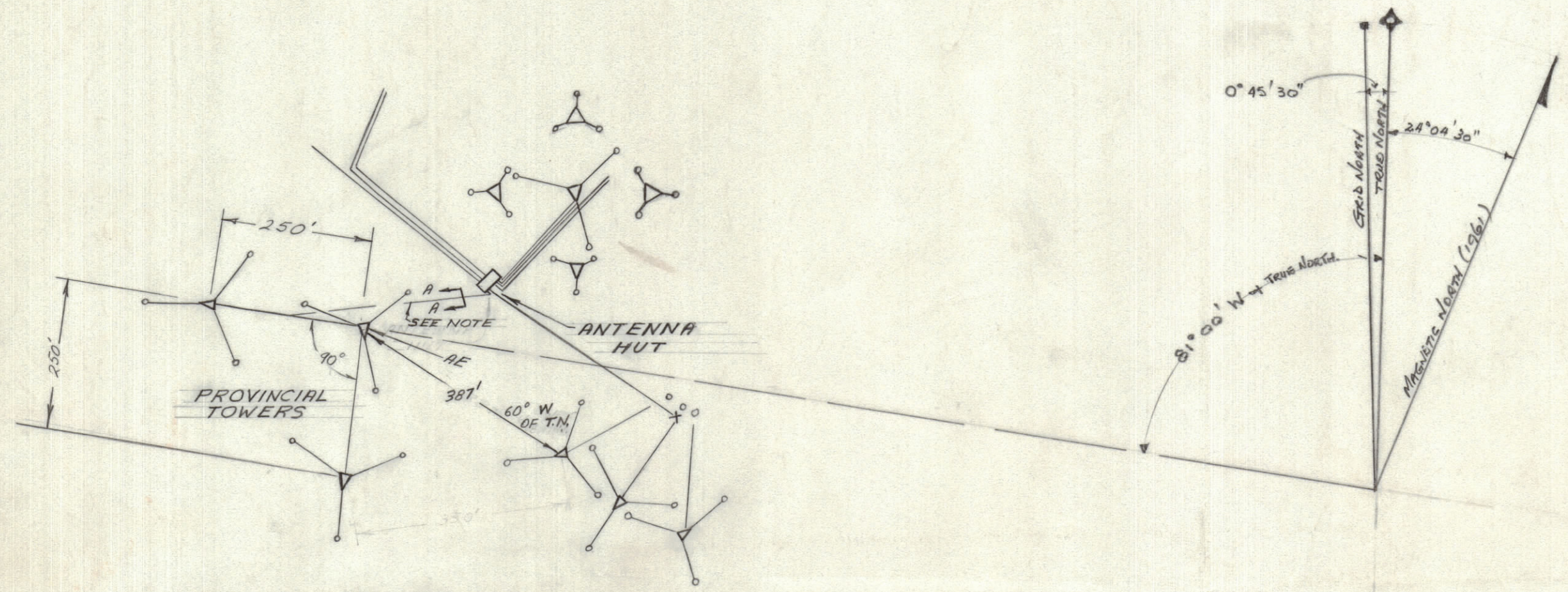


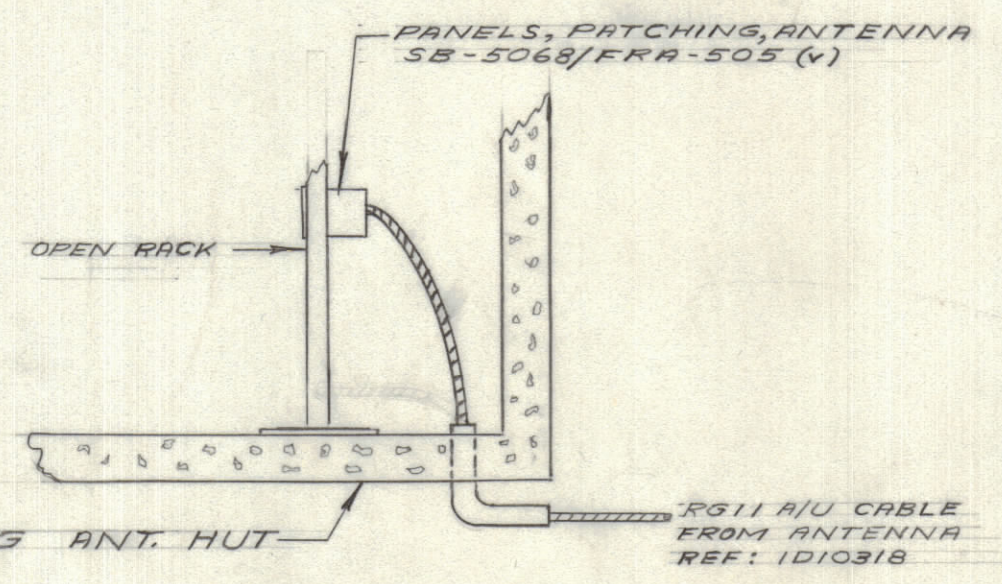
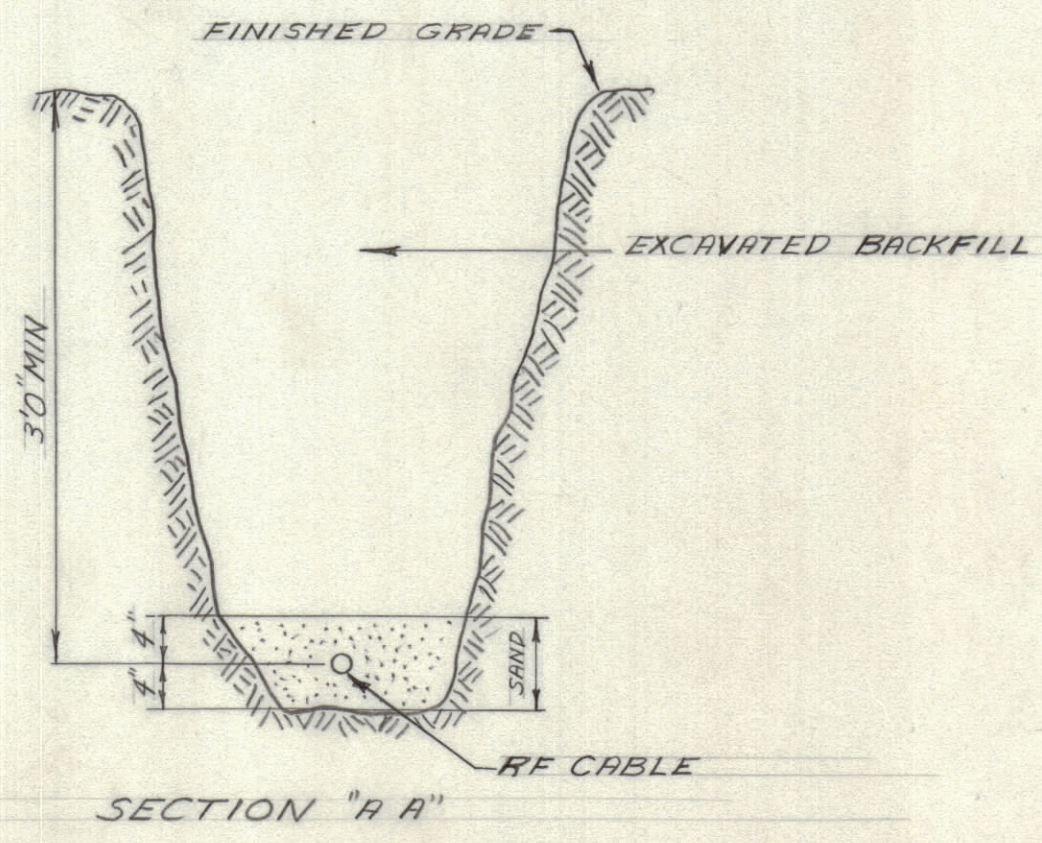
IF IT IS FOUND DESIRABLE TO CHANGE ANY TOLERANCE OR OTHER DETAIL SPECIFIED ON THIS DRAWING NOTIFY THE PURCHASER PROMPTLY.		DIMENSIONS IN INCHES UNLESS OTHERWISE SPECIFIED					
MAXIMUM ALLOWABLE TOLERANCES HAVE BEEN DETERMINED AND DEVIATIONS WILL BE CAUSE FOR REJECTION. REMOVE ALL BURRS AND SHARP EDGES.							
ISSUE	ITEM	CHANGED FROM	DATE	CN. NO.	DRAFTS	CHECKER	ENG. APP.
A		RG11 A/U WAS RG12 A/U	1/11/65		RD		

REQ.	ITEM	PART NO.	DESCRIPTION	SYMBOL
------	------	----------	-------------	--------



SCALE: 1" = 200'

ID 10314 A



RE: ANTENNA REFERENCE POINT

NOTE: LENGTH OF TRENCH FROM FEEDER LINE POST TO CABLE ENTRY HATCH - 330 FT.

REF: JOB DWG NO 4392-1-1-3

TOLERANCES		SCALE:
ALL OTHERS	DEC. DIM. \pm FRAC. DIM. \pm ANGULAR DIM. \pm	DRILL, PUNCH, COMMERCIAL STOCK SIZES AND MANUFACTURERS TOLERANCES ARE NOT INCLUDED.

MODEL	PROJECT NO.	ASS'Y. NO.	DATE
			17-8-1964

STOCK SIZE		TMC (Canada) LIMITED OTTAWA ONTARIO	
MATERIAL		PROPOSED ANTENNA LAYOUT FOR BRIDGE EXTENSION, B.C. (Civil Defense)	
WEIGHT PER PC.		DRAWN	ELEC. DES. APP.
TYPE & TEMPER.		CHECKED	MECH. DES. APP.
HEAT TREAT. SPEC.		FINAL APPROVAL	
FINISH & SPEC. NO.		ID 10314 A	