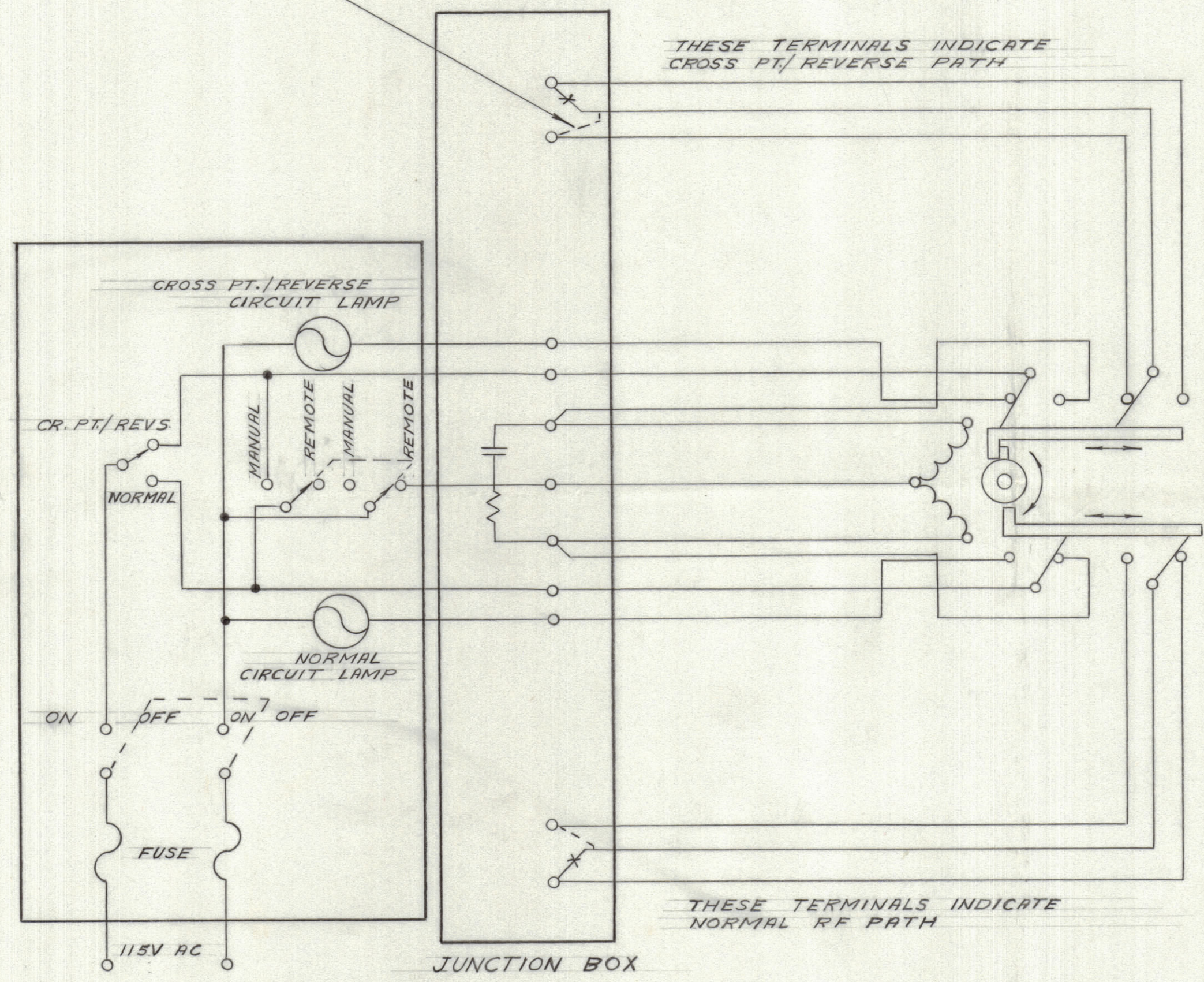


1D 10294

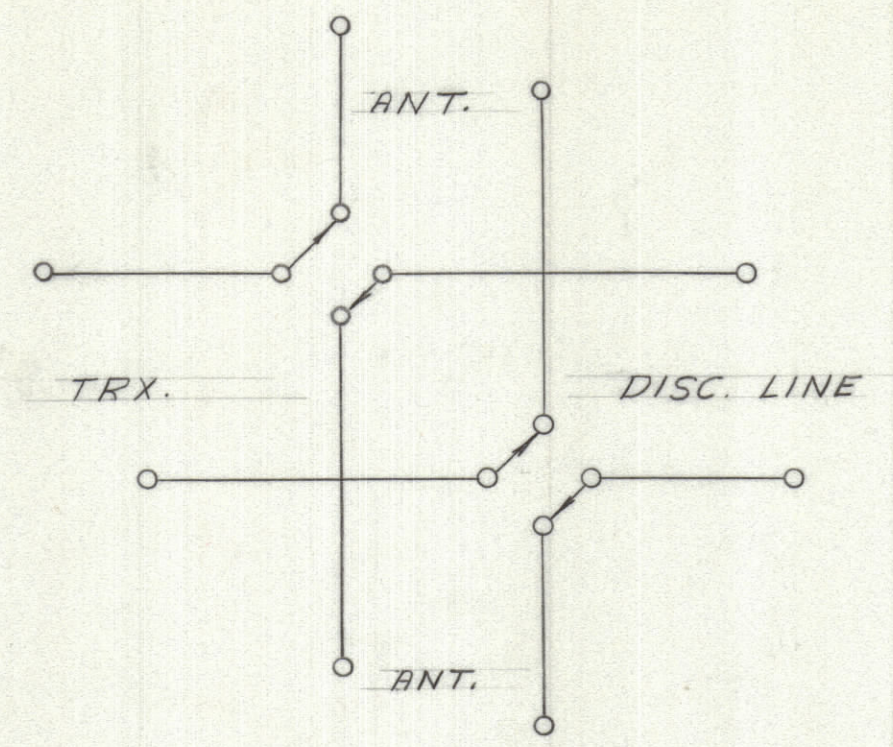
IF IT IS FOUND DESIRABLE TO CHANGE ANY TOLERANCE OR OTHER DETAIL SPECIFIED ON THIS DRAWING NOTIFY THE PURCHASER PROMPTLY.		DIMENSIONS IN INCHES UNLESS OTHERWISE SPECIFIED					
MAXIMUM ALLOWABLE TOLERANCES HAVE BEEN DETERMINED AND DEVIATIONS WILL BE CAUSE FOR REJECTION. REMOVE ALL BURRS AND SHARP EDGES.							
ISSUE	ITEM	CHANGED FROM	DATE	CN. NO.	DRAFTS	CHECKER	ENG. APP.

NOTE: INTERLOCK SWITCHES ARE SET TO BREAK BEFORE & MAKE AFTER RF SWITCHES TRANSFER
 -THESE SWITCHES CAN BE SET TO MAKE BEFORE & BREAK AFTER TRANSFER BY PLACING WIRES AS INDICATED

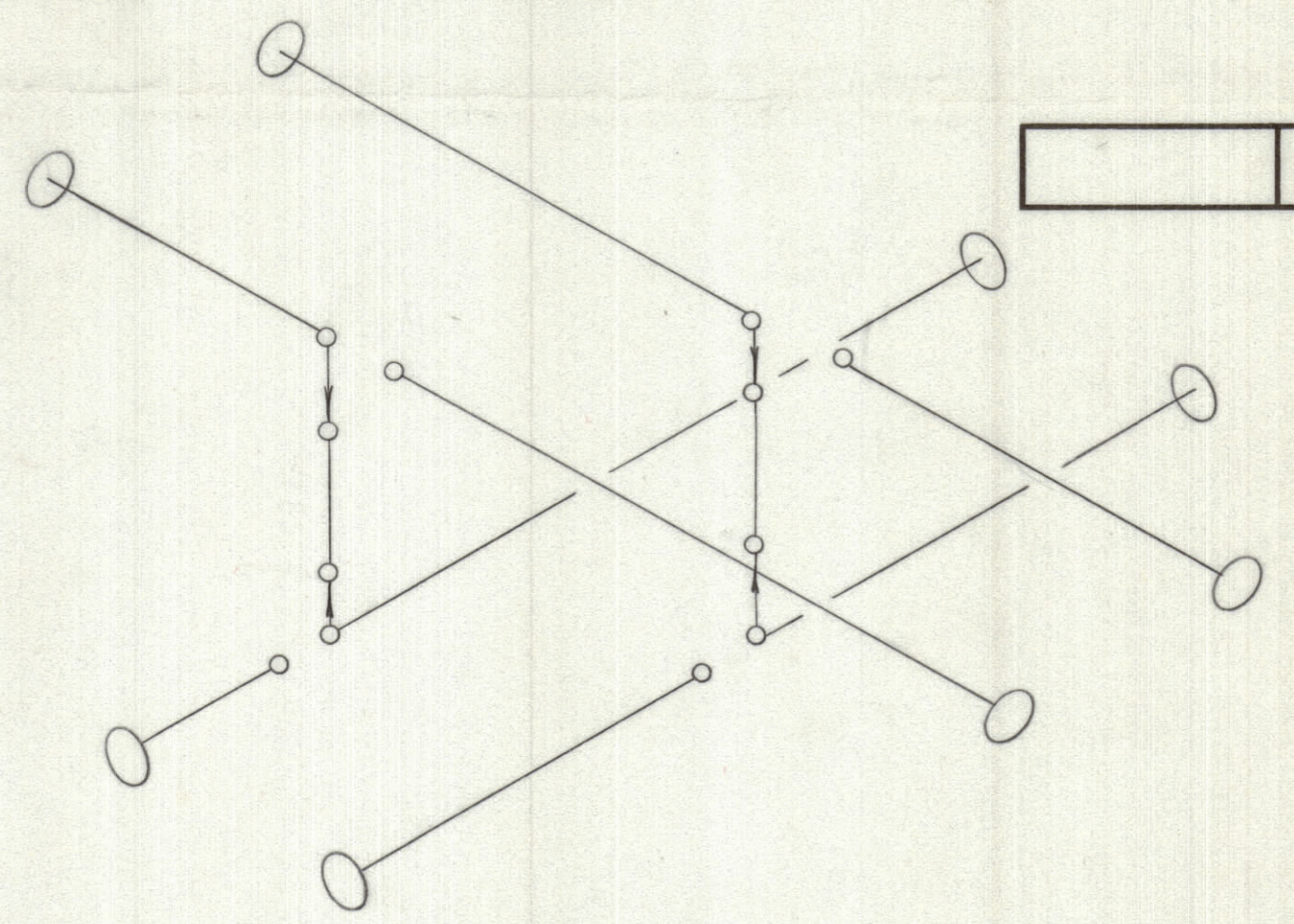


NOTE: MANUAL/REMOTE SWITCH PERMITS INDICATOR LAMPS TO FUNCTION WHEN IN MANUAL OPERATION

CONTROL SYSTEM



RHOMBIC REVERSING SYSTEM



CROSS POINT SYSTEM

TOLERANCES		SCALE:
ALL OTHERS	DEC. DIM. ± FRAC. DIM. ± ANGULAR DIM. ±	DRILL, PUNCH, COMMERCIAL STOCK SIZES AND MANUFACTURERS TOLERANCES ARE NOT INCLUDED.

MODEL	PROJECT NO.	ASS'Y. NO.	DATE
			21-5-64

REQ.	ITEM	PART NO.	DESCRIPTION	SYMBOL
------	------	----------	-------------	--------

STOCK SIZE		TMC (Canada) LIMITED OTTAWA ONTARIO		
MATERIAL		CIRCUIT DIAGRAM		
WEIGHT PER PC.		600 Ω CROSS PT. AND RHOMBIC REVERSING SWITCHING SYSTEMS		
TYPE & TEMPER.		R DES. DRAWN	ELEC. DES. APP.	MECH. DES. APP.
HEAT TREAT. SPEC.		CHECKED	FINAL APPROVAL	
FINISH & SPEC. NO.		ID 10294		Ⓟ