

LEGEND

D-TOWER CENTERS	J-ATTACHMENT SPACING
L1- 1/2 OF UPPER ELEMENT	T-TIE WIRE (APPROX 45°)
L2- 1/2 OF LOWER ELEMENT	Ø- APPROX 30°
S-INITIAL DEFLECTION (SAG) (DOWN LEAD & LOWER ELEMENTS HANGING FREELY)	H-75FT. PREFERRED
	h-12FT. PREFERRED

**TABLE 1
DOUBLE DOUBLET REC DATA**

TYPE	NOM BAND	D	J	L1	L2	S
	RANGE (MCS)	IN FEET				
A	2.5-20	130	57	60	30	3

**TABLE 2
POLYETHYLENE LINE SAG DATA**

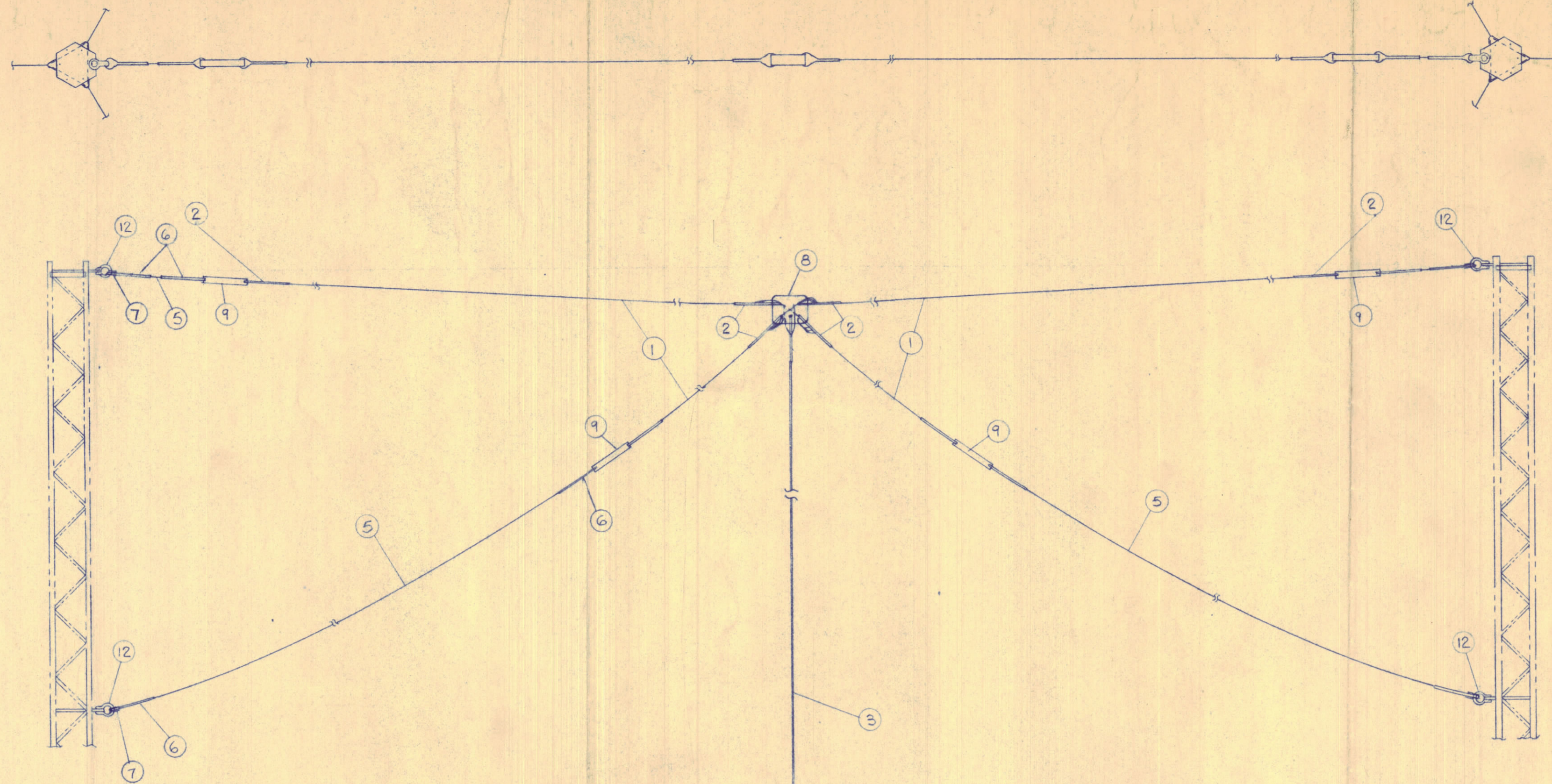
SPAN IN FT.	SAG IN INCHES		
	30°F	60°F	90°F
50 FT.	3 IN.	11 IN.	12.6 IN.

BASED ON A 20°F STRINGING TENSION OF 100 LBS.

**TABLE 3
COPPERWELD SAG DATA
3 STRAND #12, 40% COND.**

SPAN IN FT.	SAG IN INCHES		
	30°F	60°F	90°F
100 FT OR LESS	2.3 IN.	2.8 IN.	3.8 IN.

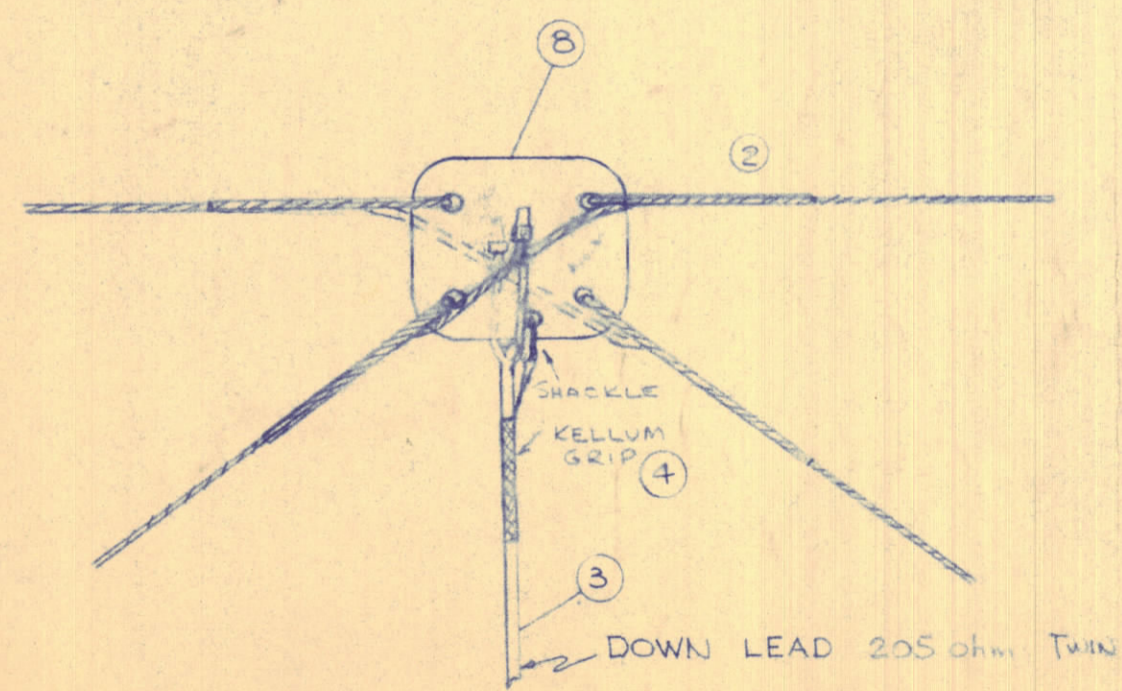
BASED ON A 60°F STRINGING TENSION OF 288 LBS. 12.8% OF THE RATED BREAKING STRENGTH OF THE CONDUCTOR.



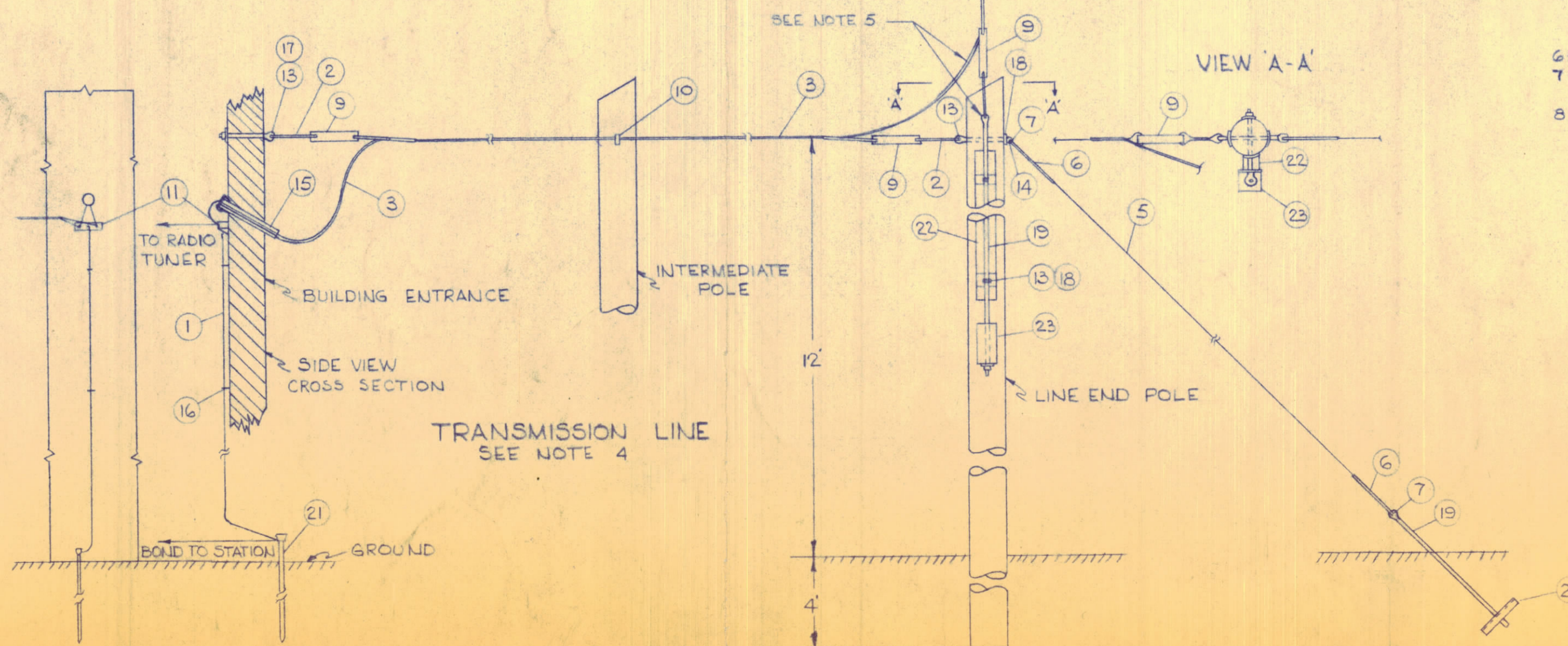
ANTENNA
SEE NOTES-1,2,3,7,4B

ITEM	PART NO.	DESCRIPTION	QTY.
ANTENNA KIT			
1	92176	COPPERWELD, 3" 12 H.S 40% COND.	200'
2	91320	COPPERWELD GUY GRIP 3" 12	9
3		CABLE, 2 WIRE, 205 OHM, POLYETHYLENE TRANSMISSION	250'
4		KELLUM GRIP	1
5	92023	GUY CABLE 1/4" 1-7 GR180	150'
6	91301	GUY GRIP 1/4" L.H.	10
7	91001	THIMBLE 1/4"	6
8		INSULATOR, CROSS CONNCT 1 1/2" 24 BORN	1
9		INSULATOR, STRAIN C/P C 23045	6
10		INSULATOR, SCREW EYE 1 1/2"	1
11		PROTECTOR, LIGHTNING ARRESTOR	1
12		ANCHOR SHACKLE 3/8"	4
13		EYE BOLT 5/8 DIA 18" L6 SLATER 30425	4
14		THIMBLEYE, ANGLE 5/8" SLATER 1100	1
15		PORCELAIN TUBE 1" ID X 10" LS OR EQUIV	1
16		STAPLE, 1 1/2" LG 3/8" SPREAD SLATER 30425	26
17	90307	ROUND WASHER, 1/16" HOLE, 1 1/4" O.D.	2
18	90334	CURVED WASHER, 5/8" HOLE	4
19	91501	ANCHOR ROD, 5/8" x 6"	2
20	10468-2	ANCHOR CHANNEL	1
21	91580	GROUND ROD, 1/2" x 6"	1
22		WOOD BLOCK, APPROX 3"x3"x4"	1
23		COUNTERWEIGHT, 4 LBS. MAX	1
(TO BE MADE ON LOCATION)			

- NOTES:**
- TABLE 1 PROVIDES ANTENNA CONSTRUCTION DATA.
 - OBSERVE DEFLECTION (SAG) OF ANTENNA WIRES.
 - LOCATE ANTENNA AS CLEAR AS PRACTICABLE FROM ALL OBSTRUCTIONS.
 - TRANSMISSION LINE SHOULD FOLLOW MOST DIRECT ROUTE FROM LINE END POLE TO STATION. LENGTH SHOULD BE A MINIMUM AND UNSUPPORTED SPAN NOT EXCEEDING 50 FT. - IN EXTREMELY COLD CLIMATES (-20°F & LOWER) SPAN LENGTH SHOULD NOT EXCEED 35 FT. - LINE SHALL BE SAGGED IN ACCORDANCE WITH TABLE-2, POLYETHYLENE LINE SAG DATA. FOR TRANSMISSION LINE EXCEEDING 150 FT IN LENGTH USE 4 WIRE 200 OHM LINE AS SPECIFIED FOR RHOMBIC RECEIVING ANTENNA (DWS D-10520) IN CONJUNCTION WITH 2 WIRE 205 OHM POLYETHYLENE CABLE FOR DOWN LEAD AND STATION LEAD-IN.
 - DOWN LEAD (205 OHM POLYETHYLENE CABLE) ATTACHMENT TO SLIDING ANCHOR ROD AND SLACK LOOP SHALL BE INSTALLED IN A MANNER TO PROVIDE APPROX. 12" SAG MOVEMENT (WITH TEMPERATURE CHANGE) OF CENTER LOADED ANTENNA SPAN. - WHEN INSTALLED IN HOT WEATHER TEMPERATURE SLIDING ROD SHALL BE NEAR BOTTOM OF TRAVEL, IN COLD WEATHER TEMP NEAR TOP OF TRAVEL & IN MODERATE TEMP. HALF WAY.
 - TOWERS AND POLES NOT SUPPLIED.
 - IN AREAS OF HIGH WIND VELOCITIES & HEAVY ICE LOADINGS A CENTRE TOWER IS REQUIRED. CONSULT FACTORY FOR RECOMMENDATIONS.
 - WHEN CENTRE TOWER IS USED ANTENNA WIRES SHALL BE SAGGED IN ACCORDANCE WITH TABLE 3, COPPERWELD SAG DATA.



CROSS CONNECT DETAIL



TRANSMISSION LINE
SEE NOTE 4

ASSY. NO.	DATE	STOCK SIZE	TMC (Canada) LIMITED OTTAWA ONTARIO	
ON		MATERIAL	DOUBLE DOUBLET	
IF IT IS FOUND DESIRABLE TO CHANGE ANY TOLERANCE OR OTHER DETAIL SPECIFIED ON THIS DRAWING NOTIFY THE PURCHASER PROMPTLY.		TYPE & TEMPER	RECEIVING ANTENNA ASSY.	
TOLERANCES		HEAT TREAT. SPEC.	DRAWN	ELEC. DES. APP.
ALL DEC. DIM. ±	SCALE	CHECKED	MECH. DES. APP.	
OTHERS	DIMENSIONS IN INCHES UNLESS OTHERWISE SPECIFIED	FINAL APPROVAL		
ANGULAR DIM. ±	DRILL: FINISH COMMERCIAL STOCK SIZES AND MANUFACTURERS TOLERANCES ARE NOT INCLUDED.	ID-10284		