

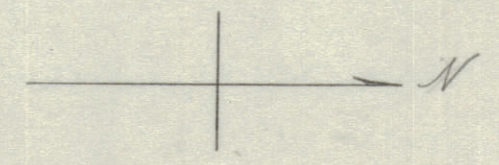
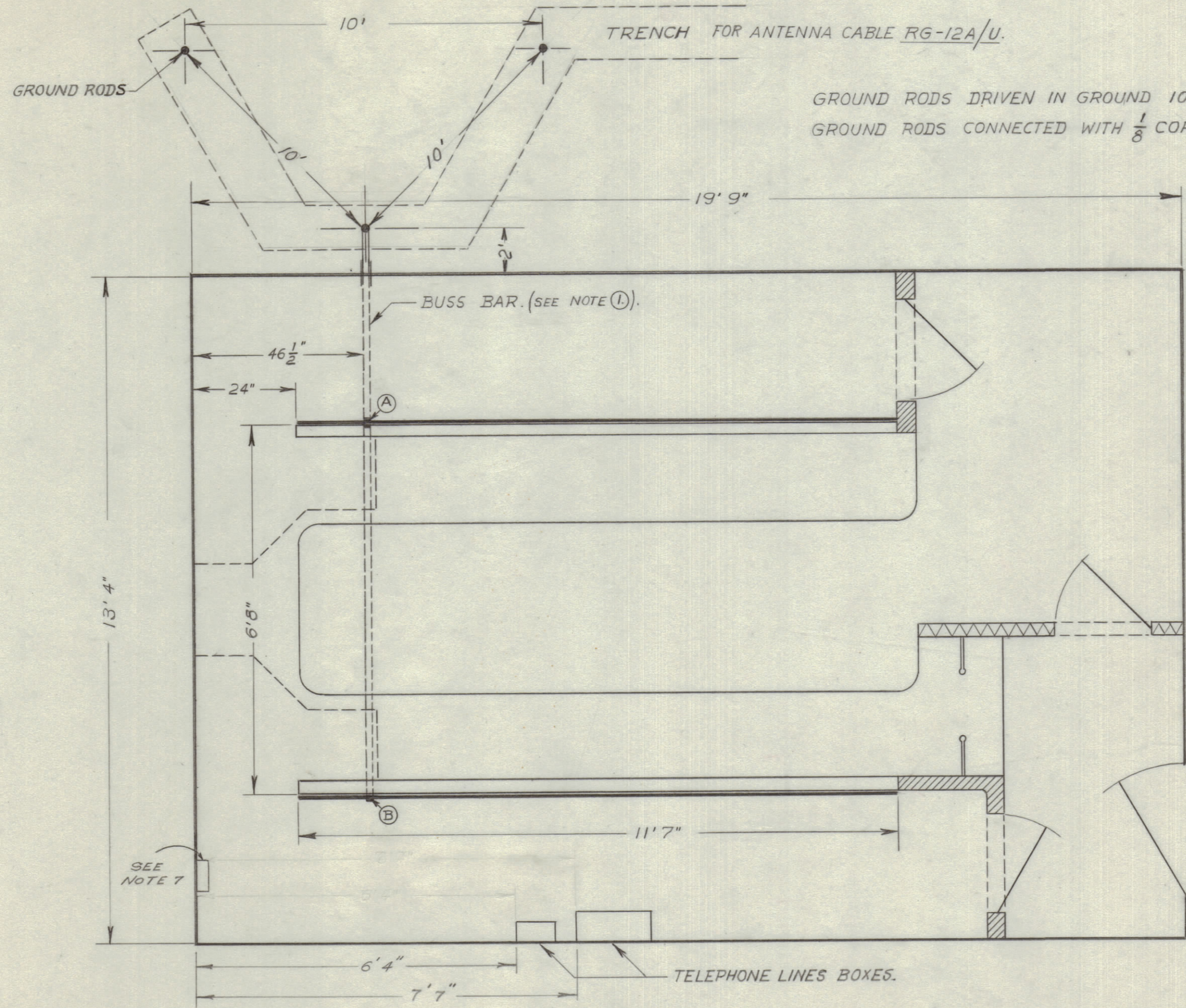
IF IT IS FOUND DESIRABLE TO CHANGE ANY TOLERANCE OR OTHER DETAIL SPECIFIED ON THIS DRAWING NOTIFY THE PURCHASER PROMPTLY.

MAXIMUM ALLOWABLE TOLERANCES HAVE BEEN DETERMINED AND DEVIATIONS WILL BE CAUSE FOR REJECTION. REMOVE ALL BURRS AND SHARP EDGES

NOTICE TO PERSONS RECEIVING THIS DRAWING

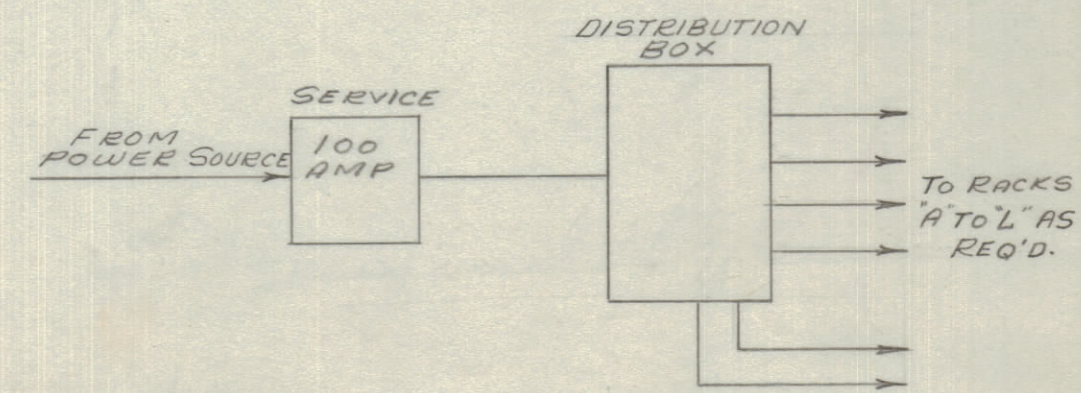
THE TECHNICAL MATERIEL CORPORATION claims proprietary right in the material disclosed hereon. This drawing is issued in confidence for engineering information only and may not be reproduced or used to manufacture anything shown hereon without permission from THE TECHNICAL MATERIEL CORPORATION to the user. This drawing is loaned for mutual assistance and is subject to recall at any time.

Property of:
THE TECHNICAL MATERIEL CORPORATION
MAMARONECK, NEW YORK



1D-10111.

- NOTE: ① BUSS BAR 1" x $\frac{1}{8}$ " FLAT AGAINST UNDER SIDE OF FLOOR.
- ② BUSS BAR GOES THROUGH A OUTSIDE WALL IN 1 $\frac{1}{2}$ " CONDUIT WITH RG-12A/U.
- ③ BROUGHT UP THROUGH FLOOR TO BUSS BAR AT POINTS A & B BOLTED TO BACK OF RACKS.
- ④ BUSS ATTACHED TO EACH RACK WITH 2 $\frac{1}{4}$ "-20 BRASS BOLTS.
- ⑤ BUSS ATTACHED AT GROUND ROD WITH SLATER 7788 CONECTOR.
- ⑥ BUSS JOINED TO ITSELF AT POINTS A & B WITH 5 $\frac{6}{32}$ BOLTS AND SHAKE PROOF NUTS.
- ⑦ 100 AMP Box. SEE INSET FOR CIRCUITRY.



ISSUE	ITEM	CHANGED FROM	DATE	CN. NO.	DRAFTS	CHECKER	ENG. APP.
TOLERANCES		SCALE:					
ALL OTHERS	DEC. DIM. ± FRAC. DIM. ± ANGULAR DIM. ±	DRILL, PUNCH, COMMERCIAL STOCK SIZES AND MANUFACTURERS TOLERANCES ARE NOT INCLUDED.					

MODEL	PROJECT NO.	ASS'Y. NO.	DATE
	8548		MARCH 12, 1957.
USED ON			

REQ.	ITEM	PART NO.	DESCRIPTION	SYMBOL
TMC (Canada) LIMITED				
STOCK SIZE		OTTAWA ONTARIO		
<i>GROUND SYSTEM ELECTRICAL INSTALLATION - TORBAY.</i>				
MATERIAL		T. GUMOWSKI		
WEIGHT PER PC.		DRAWN		
TYPE & TEMPER		ELEC. DES. APP.		
HEAT TREAT. SPEC.		MECH. DES. APP.		
FINISH & SPEC. NO.		CHECKED		
		FINAL APPROVAL		
		1D-10111.		