

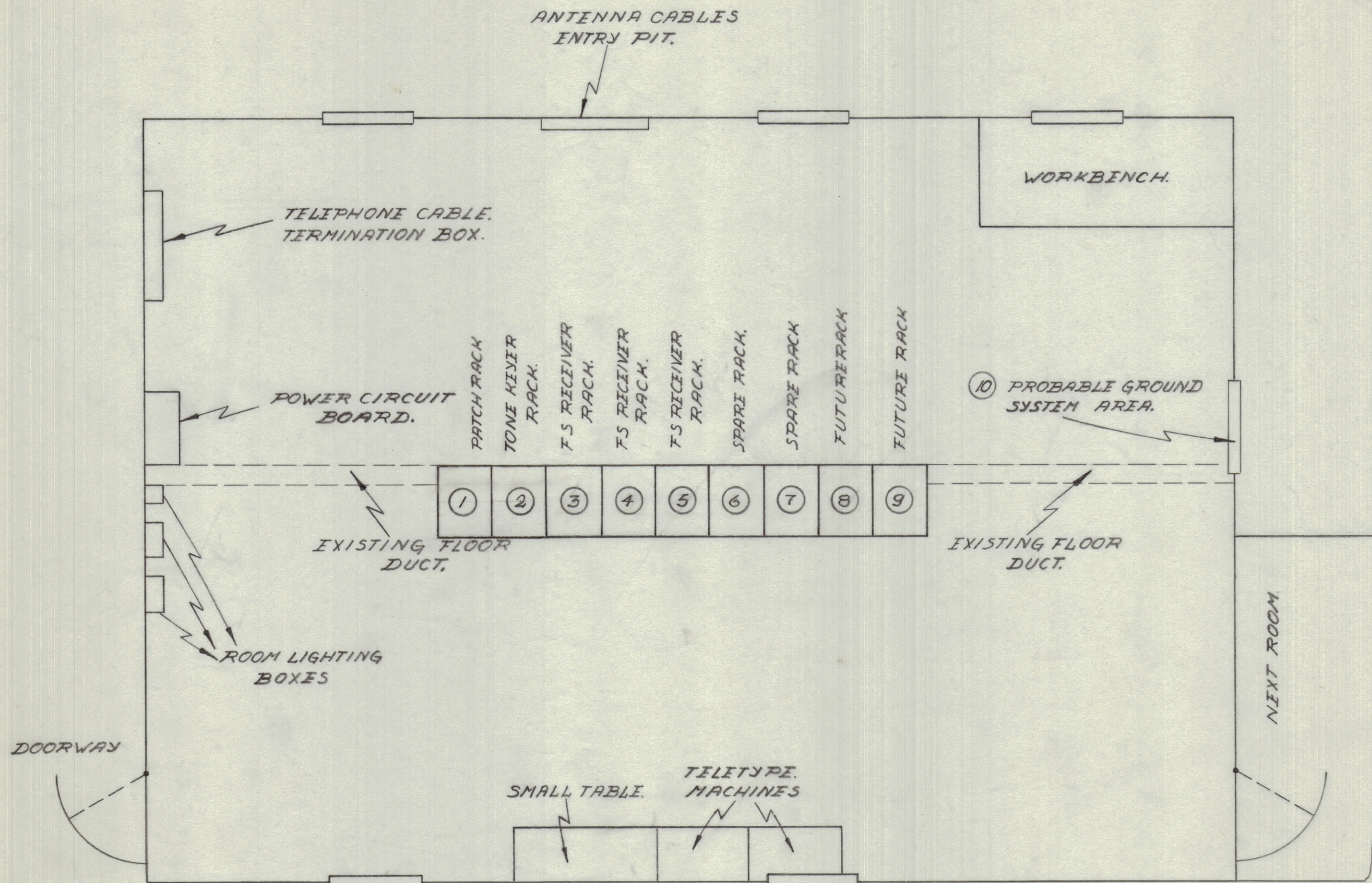
IF IT IS FOUND DESIRABLE TO CHANGE ANY TOLERANCE OR OTHER DETAIL SPECIFIED ON THIS DRAWING NOTIFY THE PURCHASER PROMPTLY.

MAXIMUM ALLOWABLE TOLERANCES HAVE BEEN DETERMINED AND DEVIATIONS WILL BE CAUSE FOR REJECTION. REMOVE ALL BURRS AND SHARP EDGES

NOTICE TO PERSONS RECEIVING THIS DRAWING

THE TECHNICAL MATERIEL CORPORATION claims proprietary right in the material disclosed hereon. This drawing is issued in confidence for engineering information only and may not be reproduced or used to manufacture anything shown hereon without permission from THE TECHNICAL MATERIEL CORPORATION to the user. This drawing is loaned for mutual assistance and is subject to recall at any time.

Property of:
THE TECHNICAL MATERIEL CORPORATION
MAMARONECK, NEW YORK



ID-10080

1. REMOTE RECEIVERS CAN BE INSTALLED IN EXISTINGS SPARE RACKS NUMBER 6 AND 7 AND IN TWO OTHER RACKS 8 AND 9 TO BE INSTALLED.
2. CIRCUITS 13 AND 14 IN POWER CIRCUIT BOARD, CAN BE USED FOR POWER DISTRIBUTION TO RACKS.
3. ROOM LIGHTING ADEQUATE.
4. FLOOR DUCT EXISTS.
5. GROUNDING SYSTEM TO BE PLACED IN EXISTING FLOOR DUCT AND PROCEED TO AREA 10.
6. ANTENNA CABLES COME IN TO ROOF OF BUILDING.
7. ROOM DIMENSIONS ARE 29'-9" x 18'-11".

ISSUE	ITEM	CHANGED FROM	DATE	CN. NO.	DRAFTS	CHECKER	ENG. APP.
TOLERANCES		SCALE: 3/8" = 1'-0"					
ALL OTHERS	DEC. DIM. ± FRAC. DIM. ± ANGULAR DIM. ±	DRILL, PUNCH, COMMERCIAL STOCK SIZES AND MANUFACTURERS TOLERANCES ARE NOT INCLUDED.					

MODEL	PROJECT NO.	ASS'Y. NO.	DATE
USED ON			

DEC. 4. 1956.

REQ.	ITEM	PART NO.	DESCRIPTION	SYMBOL
TMC (Canada) LIMITED OTTAWA ONTARIO				
LAYOUT OF REMOTE RECEIVER ROOM AT RCAF WESTHAM ISLAND.				
MATERIAL		WEIGHT PER PC.		
TYPE & TEMPER		Rich. Mansfield.		
HEAT TREAT. SPEC.		DRAWN		
FINISH & SPEC. NO.		ELEC. DES. APP. MECH. DES. APP.		
		CHECKED		
		FINAL APPROVAL		
		ID-10080		