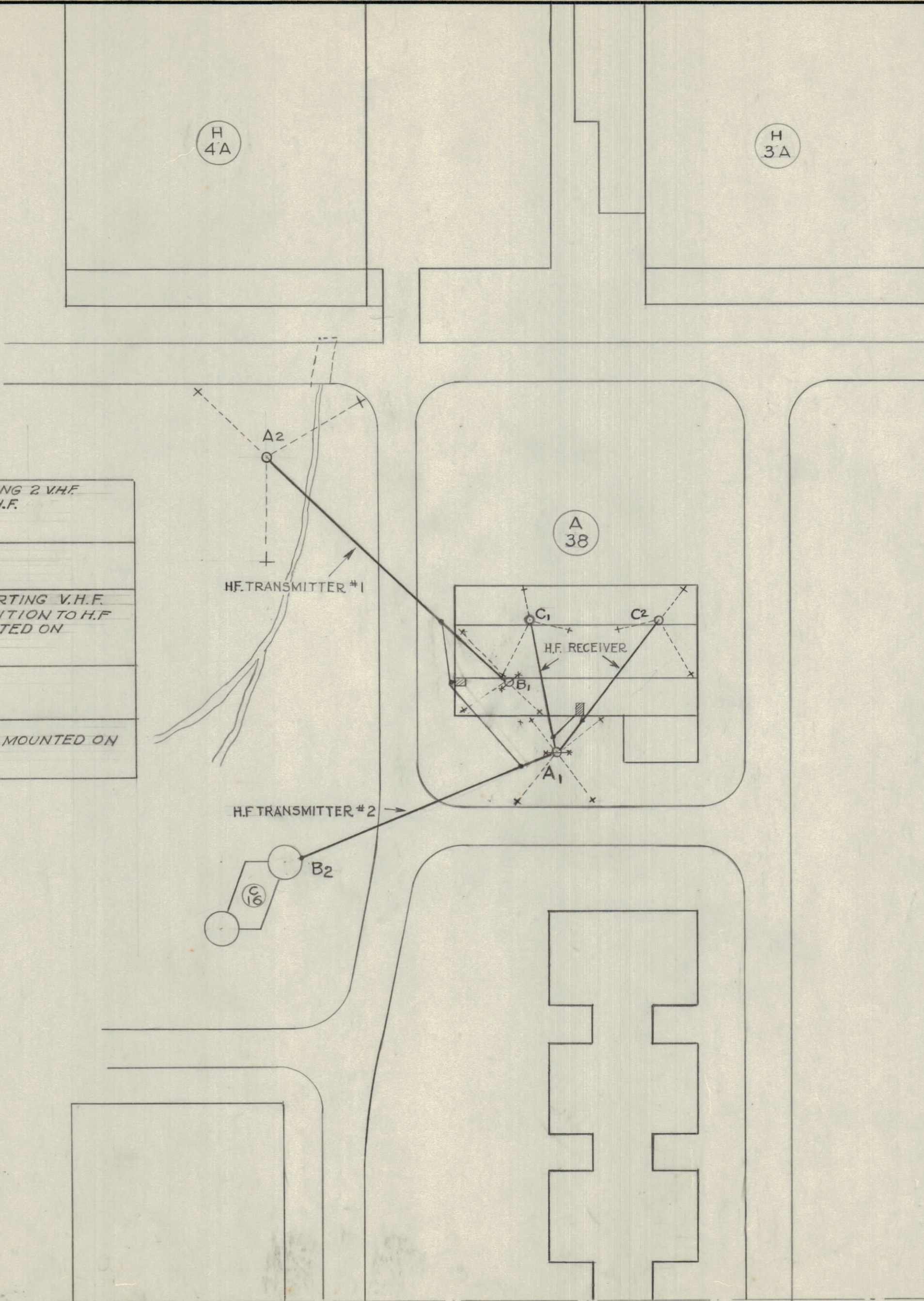
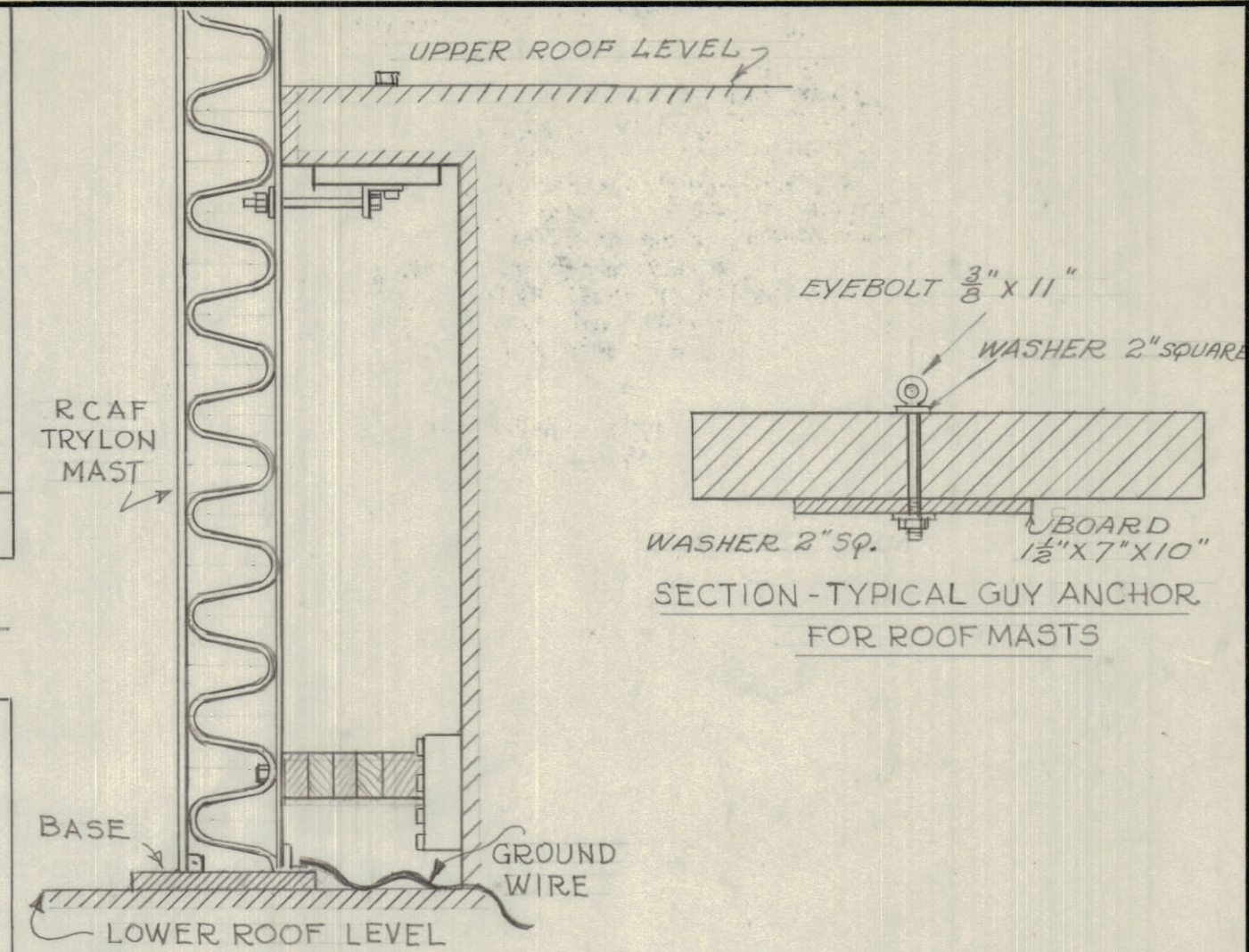


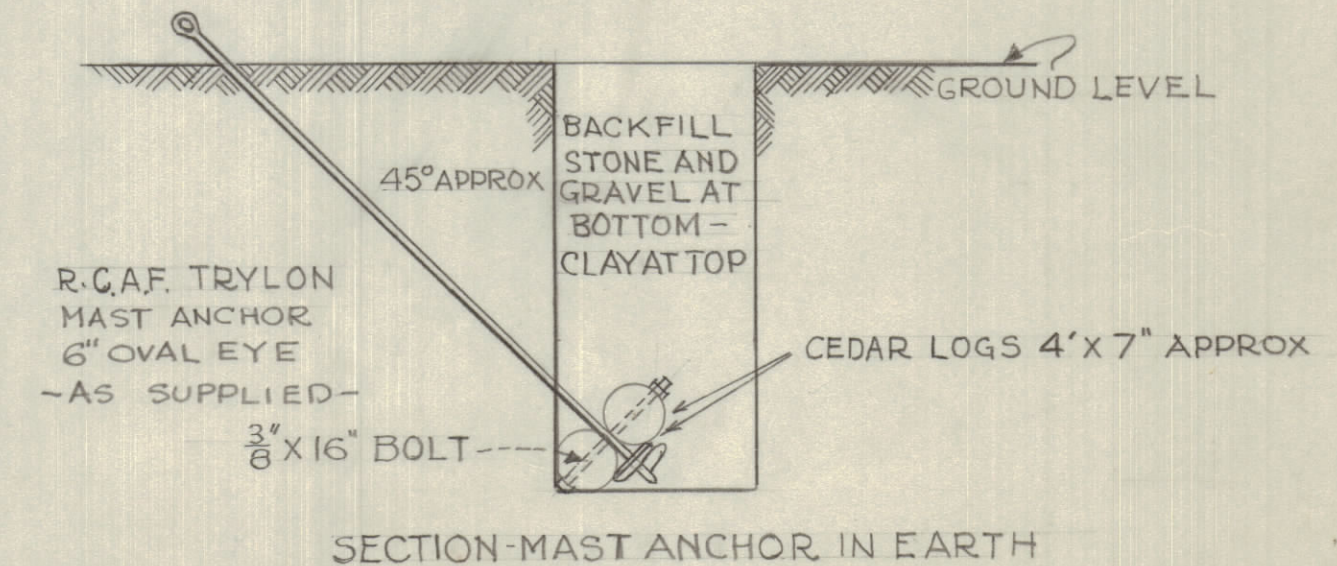
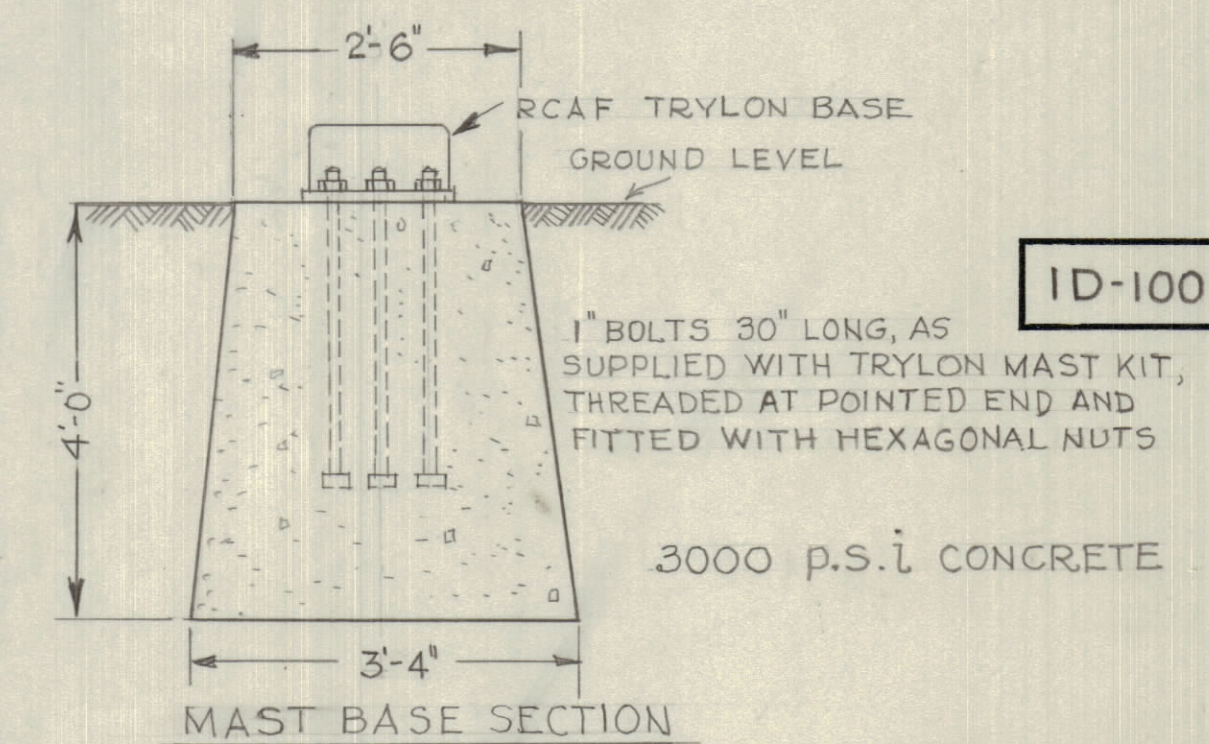
IF IT IS FOUND DESIRABLE TO CHANGE ANY TOLERANCE OR OTHER DETAIL SPECIFIED ON THIS DRAWING NOTIFY THE PURCHASER PROMPTLY.
 MAXIMUM ALLOWABLE TOLERANCES HAVE BEEN DETERMINED AND DEVIATIONS WILL BE CAUSE FOR REJECTION. REMOVE ALL BURRS AND SHARP EDGES



A ₁	60 FT R.C.A.F. TRYLON MAST SUPPORTING 2 V.H.F. RECEIVING ANTENNAE IN ADDITION TO H.F. ANTENNAE AS SHOWN.
A ₂	60 FT R.C.A.F. TRYLON MAST
B ₁	40 FT R.C.A.F. TRYLON MAST, SUPPORTING V.H.F. TRANSMITTING ANTENNAE IN ADDITION TO H.F. TRANSMITTING ANTENNA - MOUNTED ON LOWER ROOF
B ₂	SUPPORTED BY BUILDING C16
C ₁ C ₂	30 FT R.C.A.F. TRYLON STUB MASTS, MOUNTED ON LOWER ROOF LEVEL



SECTION SHOWING BASE OF ROOF MOUNTED, THIRTY FOOT MASTS FOR RECEIVING ANTENNAE



REQ.	ITEM	PART NO.	DESCRIPTION	SYMBOL
	STOCK SIZE		TMC (Canada) LIMITED OTTAWA ONTARIO	
	MATERIAL	WEIGHT PER PC.	ANTENNA INSTALLATIONS R.C.A.F. MOUNT HOPE. ONT	
	TYPE & TEMPER		E.W.B. G DRAWN	
	HEAT TREAT. SPEC.		CHECKED	FINAL APPROVAL
	FINISH & SPEC. NO.			1D-10029

NOTICE TO PERSONS RECEIVING THIS DRAWING

THE TECHNICAL MATERIEL CORPORATION claims proprietary right in the material disclosed hereon. This drawing is issued in confidence for engineering information only and may not be reproduced or used to manufacture anything shown hereon without permission from THE TECHNICAL MATERIEL CORPORATION to the user. This drawing is loaned for mutual assistance and is subject to recall at any time.

Property of:
 THE TECHNICAL MATERIEL CORPORATION
 MAMARONECK, NEW YORK

ANTENNA INSTALLATIONS

SCALE = 50' = 1"

ENLARGED SECTION FROM R.C.A.F. DWG H-21-1-1000-1

ISSUE	ITEM	CHANGED FROM	DATE	CN. NO.	DRAFTS	CHECKER	ENG. APP.
TOLERANCES							
SCALE:							
ALL OTHERS	DEC. DIM. ±	FRAC. DIM. ±	ANGULAR DIM. ±	DRILL, PUNCH, COMMERCIAL STOCK SIZES AND MANUFACTURERS TOLERANCES ARE NOT INCLUDED.			

MODEL	PROJECT NO. 10034	ASS'Y. NO.	DATE SEPT 7 TH 1954
USED ON			