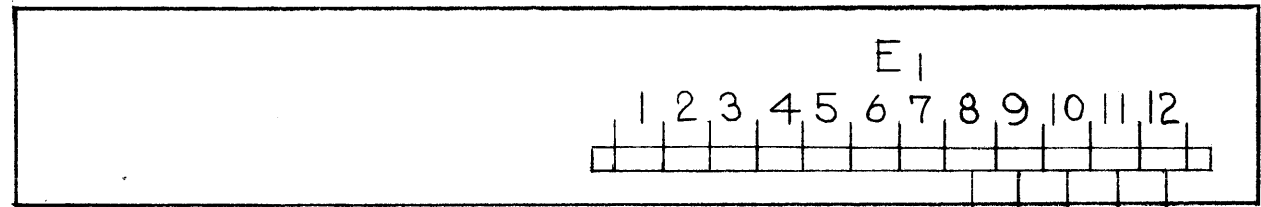


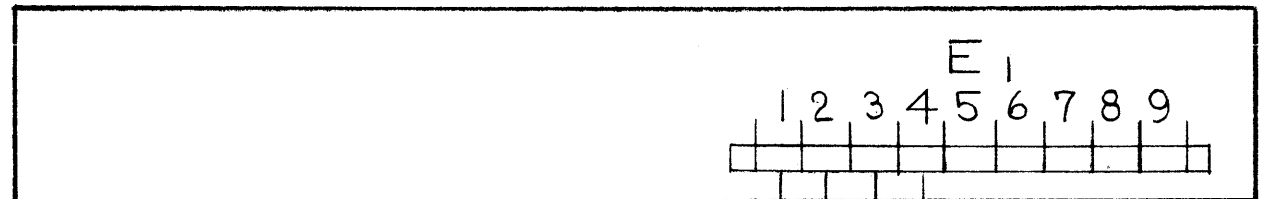
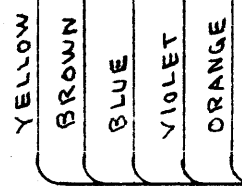
IF IT IS FOUND DESIRABLE TO CHANGE ANY TOLERANCE OR OTHER DETAIL SPECIFIED ON THIS DRAWING NOTIFY THE PURCHASER PROMPTLY.

MAXIMUM ALLOWABLE TOLERANCES HAVE BEEN DETERMINED AND DEVIATIONS WILL BE CAUSE FOR REJECTION. REMOVE ALL BURRS AND SHARP EDGES

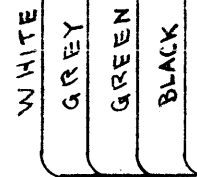
ID-103



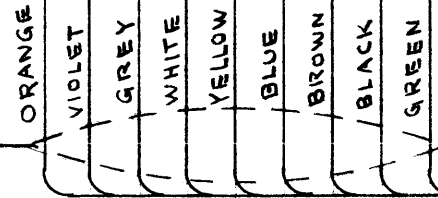
LPP



CFA



BFP-1



CA-112

NOTE: NONE OF THE WIRING OF THE DDR-2 RACK IS DISTURBED BY THE ADDITION OF THE BFP-1. THE UNIT AND CABLE ARE ADDED TO THE PRESENT EQUIPMENT AS PER THIS INSTALLATION DIAGRAM.

REQ.	ITEM	PART NO.	DESCRIPTION	SYMBOL
		#	THE TECHNICAL MATERIEL CORP. MAMARONECK, NEW YORK	
		#	INSTALLATION DIAGRAM	
		#	C.D.O. 8-21-52	A. J. J.
		#	DRAWN	ELEC. DES. APP. MECH. DES.
		#	HEAT TREAT. SPEC.	CHECKED
		#	FINISH & SPEC. NO.	FINAL APPROVAL

ORIGINAL RELEASE	8/14/69					
ISSUE	ITEM	CHANGED FROM	DATE	CN. NO.	DRAFTS	CHECKER
TOLERANCES			SCALE:			
ALL OTHERS	DEC. DIM. ±	FRAC. DIM. ±	ANGULAR DIM. ±	DRILL, PUNCH, COMMERCIAL STOCK SIZES AND MANUFACTURERS TOLERANCES ARE NOT INCLUDED.		
	BFP-1	121				8-21-52
	MODEL	PROJECT NO.	ASS'Y. NO.	DATE		

USED ON

ID-103