

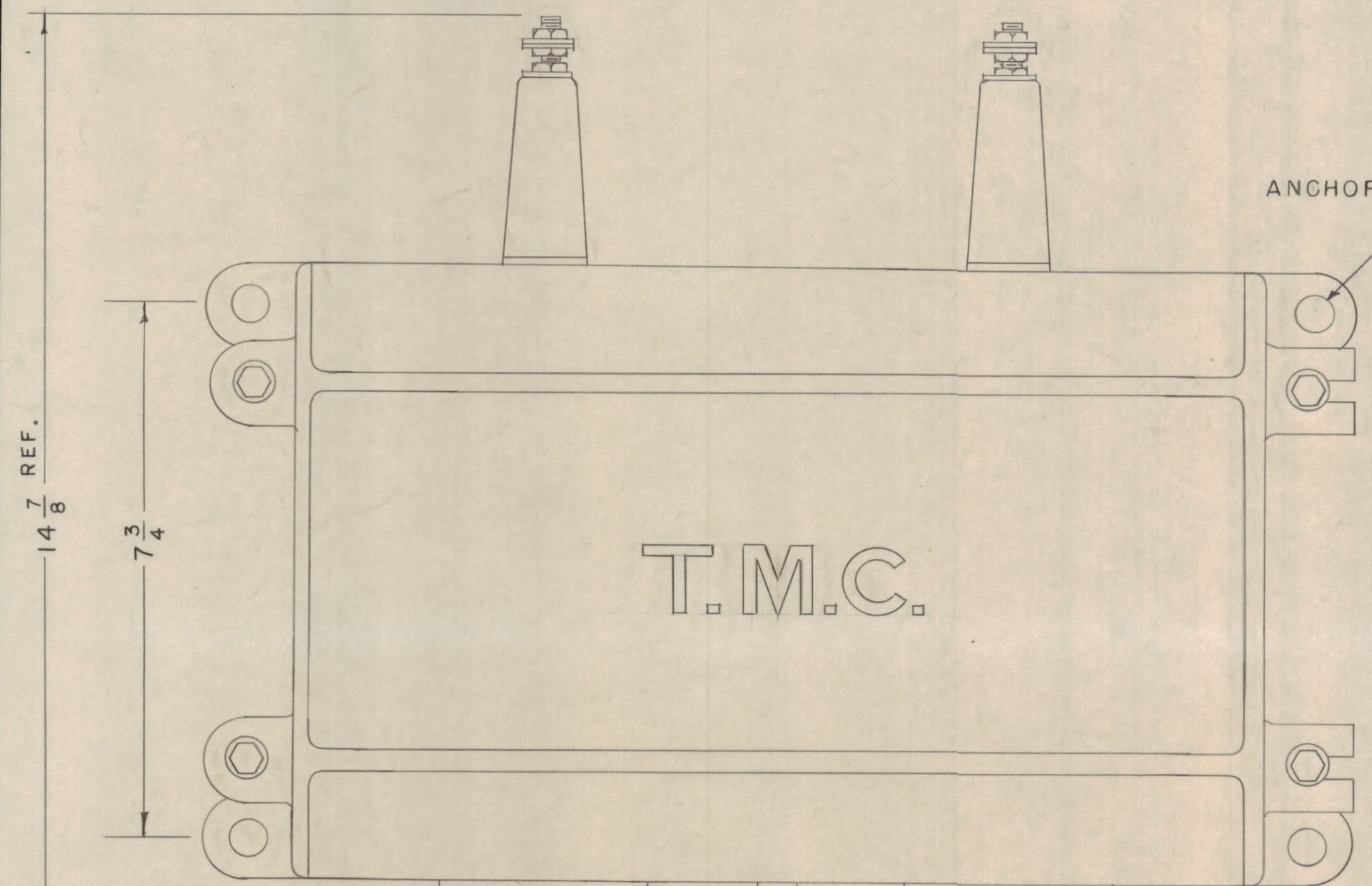
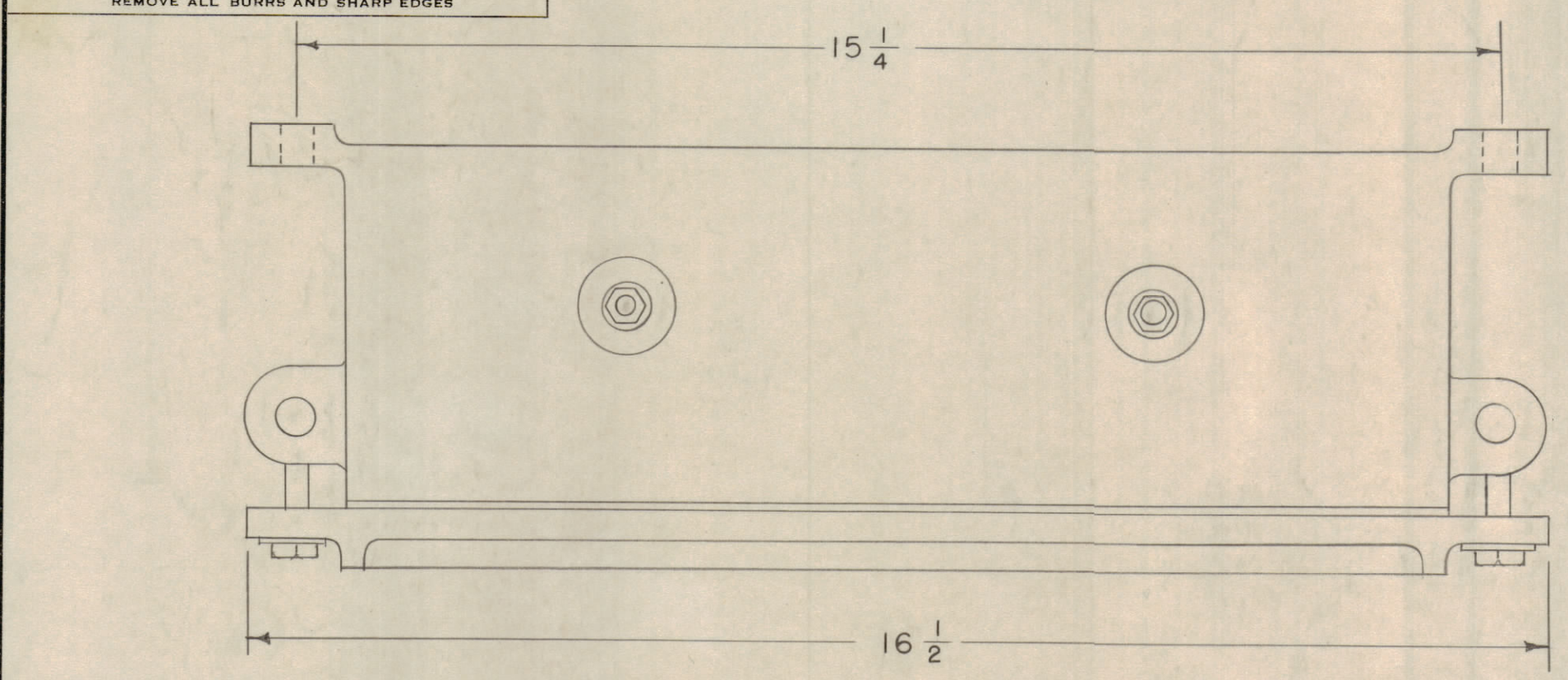
IF IT IS FOUND DESIRABLE TO CHANGE ANY TOLERANCE OR OTHER DETAIL SPECIFIED ON THIS DRAWING NOTIFY THE PURCHASER PROMPTLY.

MAXIMUM ALLOWABLE TOLERANCES HAVE BEEN DETERMINED AND DEVIATIONS WILL BE CAUSE FOR REJECTION. REMOVE ALL BURRS AND SHARP EDGES

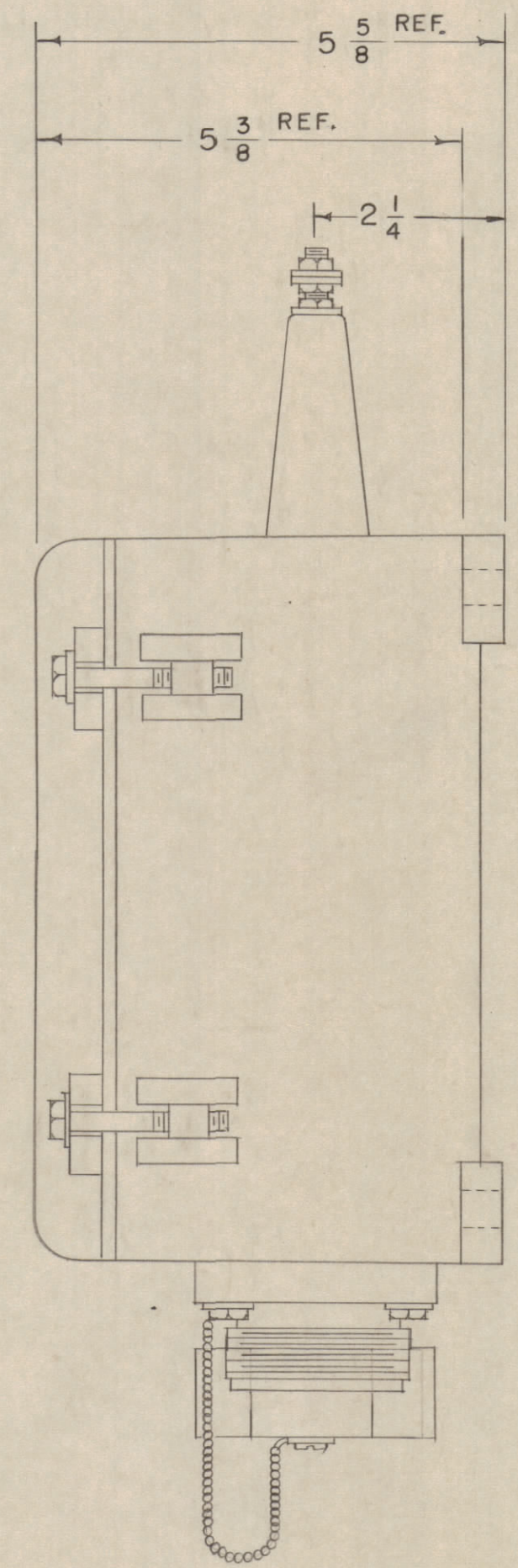
NOTICE TO PERSONS RECEIVING THIS DRAWING

THE TECHNICAL MATERIEL CORPORATION retains proprietary right in the material disclosed herein. This drawing is issued in confidence for the use of information only and may not be reproduced or used to manufacture anything shown hereon without permission from THE TECHNICAL MATERIEL CORPORATION to the user. This drawing is loaned for mutual assistance and is subject to recall at any time.

Property of:
THE TECHNICAL MATERIEL CORPORATION
MAMARONECK, NEW YORK



ANCHOR HOLES 33/64 DIA.



COUPLING FOR RG-85/U CABLE (END SEAL NOT SUPPLIED)

RECEPTACLE UG-58/U
AND PLUG UG-21B/U
SUPPLIED FOR USE WITH
CABLE RG-12/U
ARMOR CLAMP MX-564/U

COUPLING CAP SUPPLIED (USE ON EITHER COUPLING)

ID-101

ISSUE	ITEM	CHANGED FROM	DATE	CN. NO.	DRAFTS	CHECKER	ENG. APP.
			5/4/54			CDB	JAG
TOLERANCES		SCALE: #					
ALL OTHERS	DEC. DIM. ±	DRILL, PUNCH, COMMERCIAL STOCK SIZES AND MANUFACTURERS TOLERANCES ARE NOT INCLUDED.					
	FRAC. DIM. ±						
	ANGULAR DIM. ±						

MODEL	PROJECT NO.	ASS'Y. NO.	DATE

REQ. ITEM	PART NO.	DESCRIPTION	SYMBOL
THE TECHNICAL MATERIEL CORP. MAMARONECK, NEW YORK			
INSTALLATION DETAILS			
ANTENNA COUPLER BAG-2			
GDD 5-3-54			
DRAWN	ELEC. DES. APP.	MECH. DES. APP.	
JAG		WDE	
CHECKED	FINAL APPROVAL		
	ID-101		
FINISH & SPEC. NO.			