

TMC P/N	MFR P/N	RETICLE LENS	LAMP	BACKGROUND COLOR	MESSAGE		REMARKS
		TMC P/N	TMC P/N		COLOR	HEIGHT	
IC103-1	SRO-600	LI107-1	BI114-4	BLACK	WHITE	36 POINT	LAMPS TO BE LEFT OUT OF POSITIONS 8 THRU 12.
IC103-2	SRO-600	LI107-2	BI114-4	BLACK	WHITE	36 POINT	
IC103-3	SRO-600	LI107-4	BI114-4	BLACK	WHITE	36 POINT	LAMPS TO BE LEFT OUT OF POSITIONS 9 THRU 11.
IC103-4	SRO-600	LI107-5	BI114-4	BLACK	WHITE	36 POINT	LAMPS TO BE LEFT OUT OF POSITIONS 4 THRU 12.
IC103-5	SRO-600	LI107-6	BI114-4	BLACK	WHITE	36 POINT	LAMPS TO BE LEFT OUT OF POSITIONS 2, 4 THRU 12.

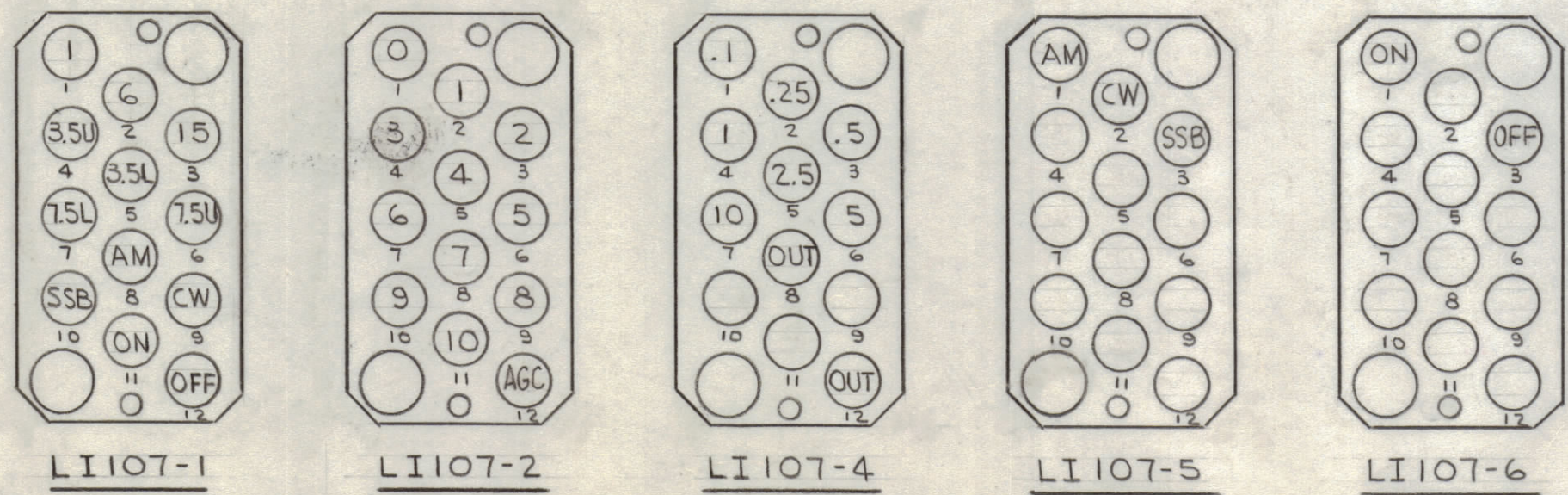
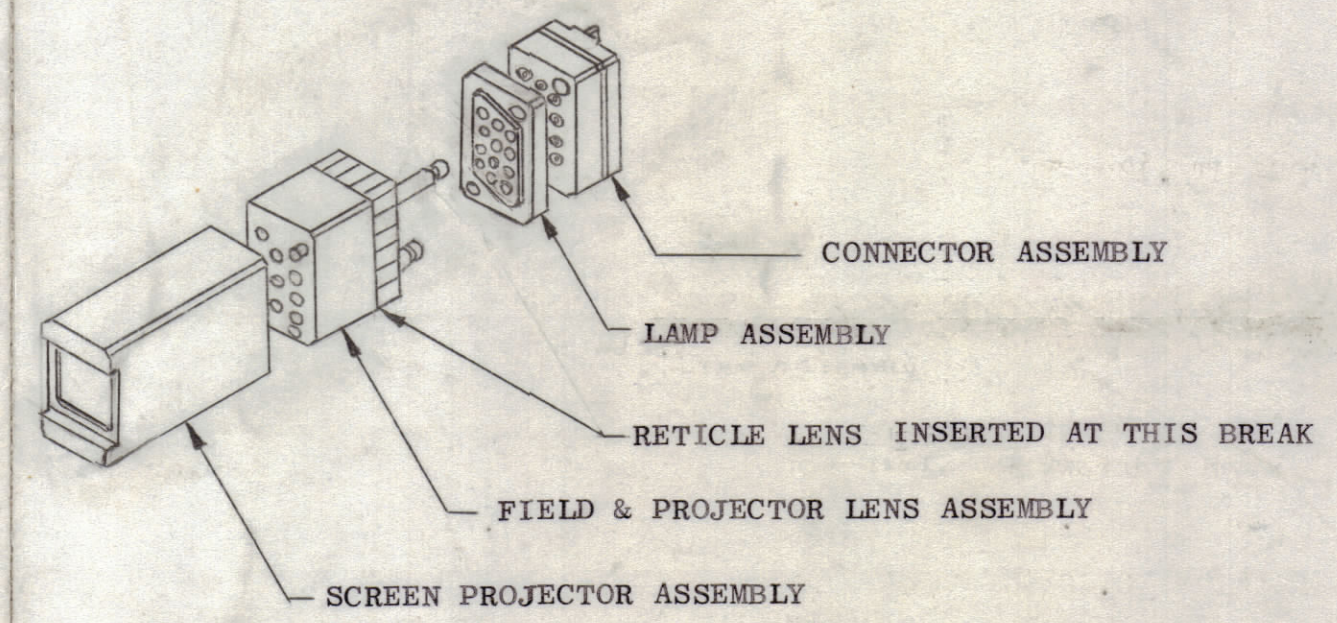
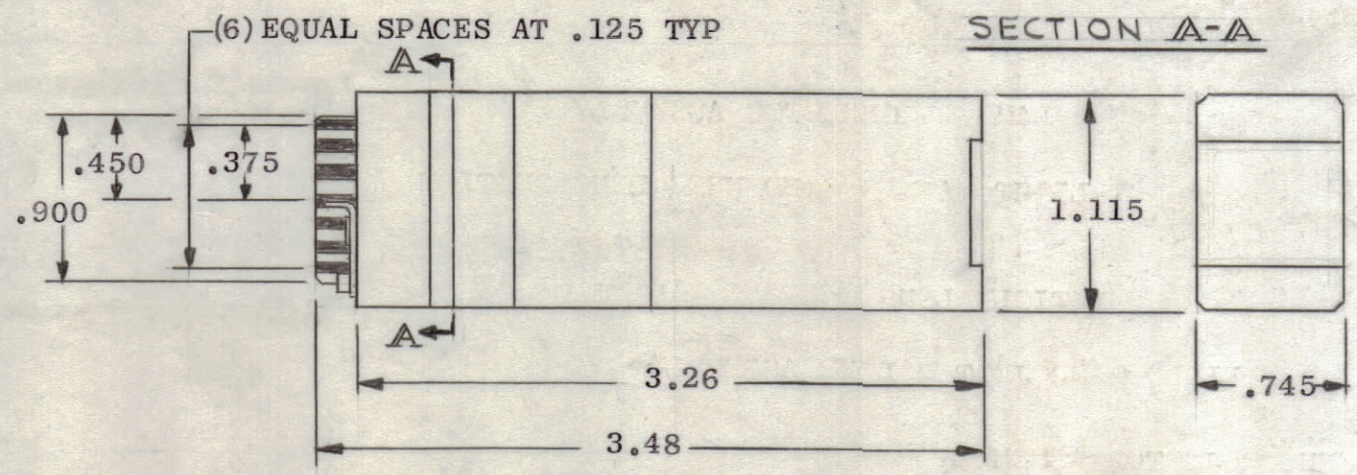
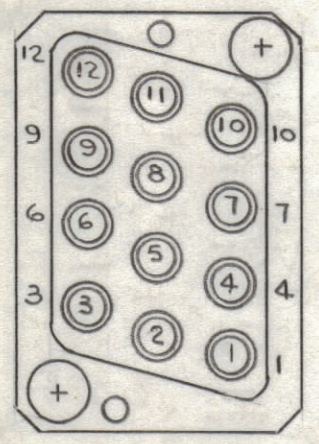
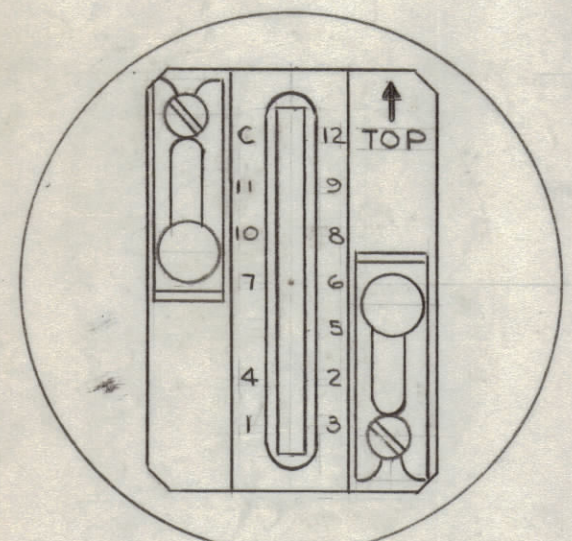
REVISIONS							
ZONE	SYM	DESCRIPTION	DATE	E.M.N. NO.	DRAFT	CHKD	APPD
X1	X1	TMC P/N FOR LAMP WAS BI114-3 (PICT. REV)	1/17/66	X1	JL	FLA	
	Ø	ORIGINAL RELEASE FOR PRODUCTION	1/17/66	Ø			
	A	CHGD ALL MFR. P/N TO SRO-600. CHG'D 'LAMP VOLTAGE' SPECS.	7-28-64	16643	RME	QPS	
	B	COLOR CODE WHITE WAS RED	8/24/66	16784	CEB	QPS	MM

SPECIFICATIONS:

LAMPS = 12 VOLTS FLANGED BASE, T-1
 MATERIAL: .032 EPOXY GLASS LAMINATE WITH .0014 COPPER FOIL PER MIL P-13949.

RETICLE IS INSTALLED IN READOUT UPSIDE DOWN.
 PROJECTION SCREEN NOT SUPPLIED

LAMP POSITIONING



REQ'D.	ITEM	PART NUMBER	DESCRIPTION	SYMBOL
EATON LIST OF MATERIAL				
MATERIAL		SEE SPECS	THE TECHNICAL MATERIEL CORP. MAMARONECK, NEW YORK	
FINISH		SEE SPECS	INDICATOR, DIGITAL, READOUT	
UNLESS OTHERWISE SPECIFIED DIMENSIONS ARE IN INCHES AND INCLUDE CHEMICALLY APPLIED OR PLATED FINISHES		DRAWN J. LESHINSKI	DATE 12/2/65	FINAL APPROVAL [Signature]
DECIMALS .X ± .05 .XX ± .01 .XXX ± .005		CHECKED QPS	DATE 12-2-65	DATE 1/17/66
FRACTIONS ± 1/64 ANGLES ± 0° 30'		ELECT. DES. [Signature]	DATE 12/17/65	DATE 1/17/66
TOLERANCES		MEGH. DES.	DATE	DATE
RTIH-1		IC103		B
Q'TY./UNIT		SHEET		REV. LTR.
SCALE		DATE		DATE
MODEL USED ON		DATE		DATE
CODE		DATE		DATE
C-5401-326		DATE		DATE
ASS'Y. NO.		DATE		DATE
THE CONTENTS OF THIS DRAWING ARE THE EXCLUSIVE PROPERTY OF THE TECHNICAL MATERIEL CORP. ITS UNAUTHORIZED USE OR REPRODUCTION IN WHOLE OR IN PART IS STRICTLY FORBIDDEN.		DATE		DATE

STANDARD DRAWING

NOTES

IC103 B