

5

4

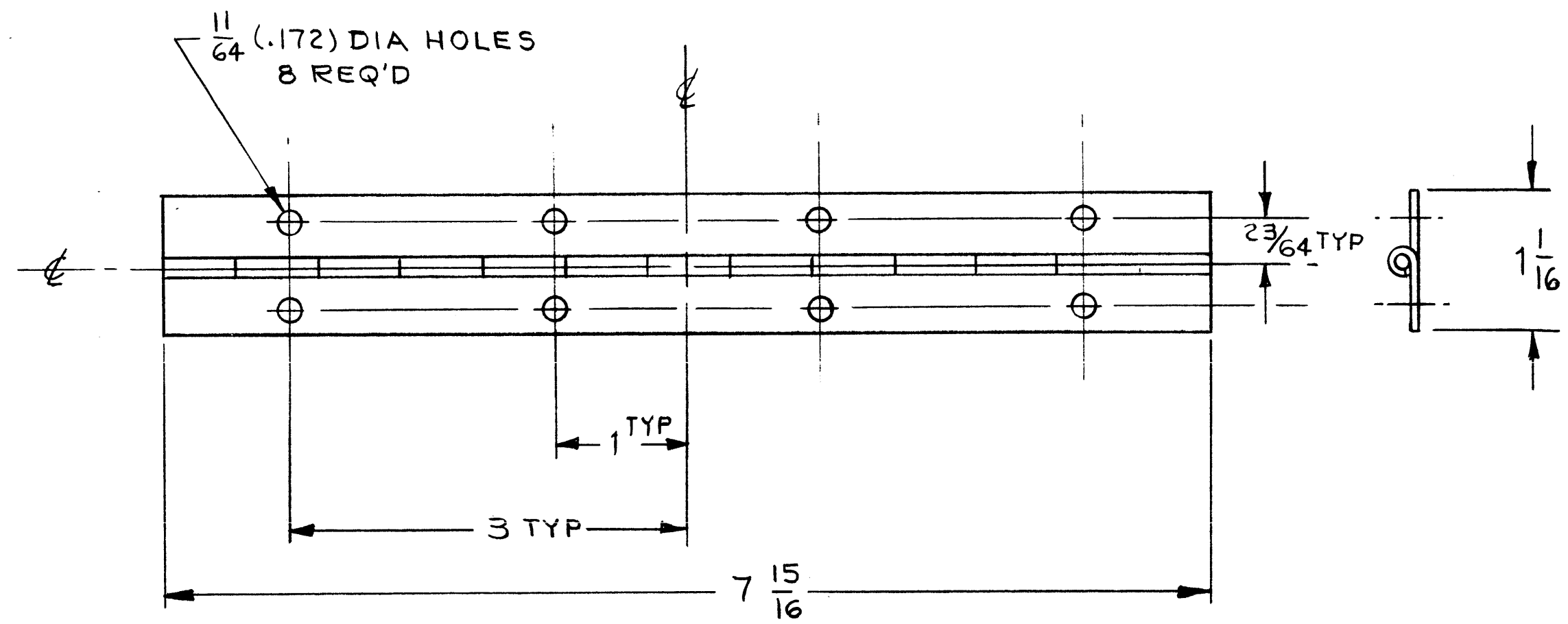
3

2

1

REVISIONS

ZONE	LTR	DESCRIPTION	DATE	E.M.N.NO	DRAFT	CHKD	APPD



MATERIAL: .040 THK, 5052-H32 ALUM
 PIN MAT'L: .095 DIA DURALUMINUM
 HINGE TYPE: PLAIN, NO SWAGE
 FINISH: S-404 IRIDITE
 S-114 PRIMER
 S-115 ENAMEL

1	UNIT- 7A	
QTY / UNIT	MODEL USED ON	ASS'Y NO.
APPLICATION		
	CODE	
NOTICE TO PERSONS RECEIVING THIS DRAWING THE TECHNICAL MATERIEL CORPORATION claims proprietary right in the material disclosed hereon. This drawing is issued in confidence for engineering information only and may not be reproduced or used to manufacture anything shown hereon without permission from THE TECHNICAL MATERIEL CORPORATION to the user. This drawing is loaned for mutual assistance and is subject to recall at any time.		

UNLESS OTHERWISE SPECIFIED DIMENSIONS ARE IN INCHES AND INCLUDE CHEMICALLY APPLIED OR PLATED FINISHES

DECIMALS	FRACTIONS
.X ± .05	1/64
.XX ± .01	TOLS. ANGLES
.XXX ± .005	0° -30'

MATERIAL
SEE NOTE

FINISH
SEE NOTE

REQ'D	ITEM	PART NUMBER	DESCRIPTION	SYM.
LIST OF MATERIAL				
FINAL APPROVAL <i>[Signature]</i> DATE MECH. DES. DATE ELECT. DES. DATE CHECKED <i>G. ORLANDI</i> DATE 1-2-68 DRAWN <i>Amiska</i> DATE 12/7/67				
THE TECHNICAL MATERIEL CORP. MAMARONECK, NEW YORK DOOR HINGE AUTO DEHYDRATOR PANEL				
SIZE	CODE IDENT. NO.	DWG NO.	ISSUE	
B	82679	H1-8002	Ø	
SCALE FULL			SHEET OF	

5

4

3

2

1