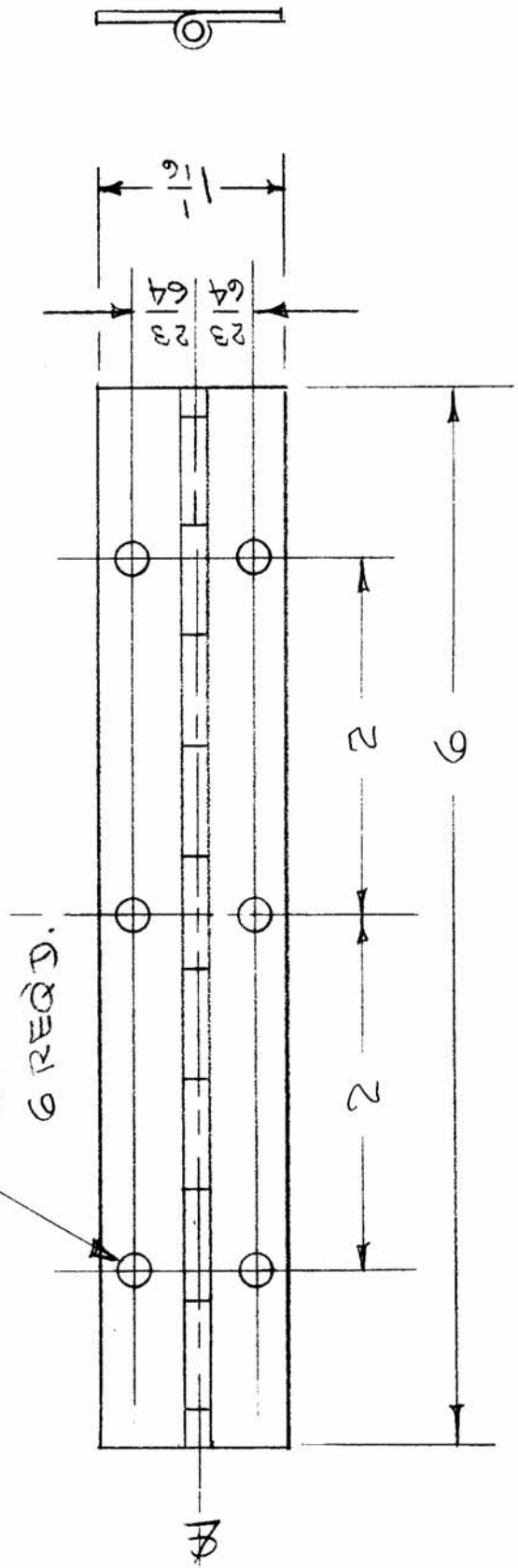


HI8001 \emptyset

REQ. PER UNIT	1
MODEL	AX 8000
USED ON ASSY. NO.	
DATE	

$\frac{11}{64}$ (.172) DIA
6 REQ'D.



MATERIAL: .040 THK, 5052 H32 ALUMINUM
 PIN MATERIAL: .095 DIA DURALUMINUM
 OPEN HINGE WIDTH: 1/16"
 HINGE TYPE: PLAIN, NO SWAGE
 FINISH: SA04 IRIDITE
 8114 PRIMER
 8115 ENAMEL

REQ. ITEM	PART NO.	DESCRIPTION	SYMBOL
SEE NOTES		THE TECHNICAL MATERIEL CORP. MAMARONECK. NEW YORK	
"	"	DOOR HINGE	
"	"	24 HOUR CLOCK	
"	"	S.D. DEAN G.M.C. 11-22-64 12-13-67	
"	"	DRAWN	CHECKED
"	"	CB III	CB III
"	"	ELEC. DES. APP.	MECH. DES. APP.
"	"	HI8001	\emptyset
TYPE & TEMPER		HEAT TREAT. SPEC.	FINAL APPROVAL
FINISH & SPEC. NO.			