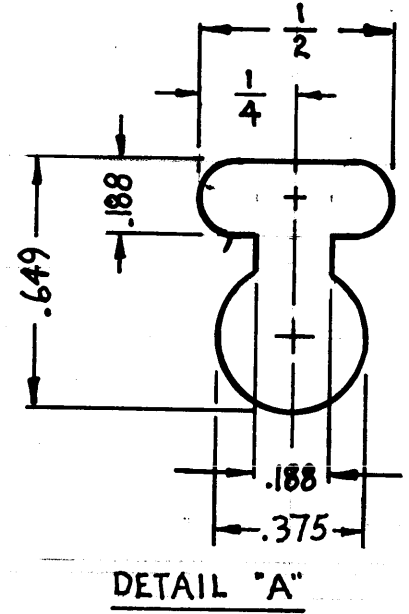
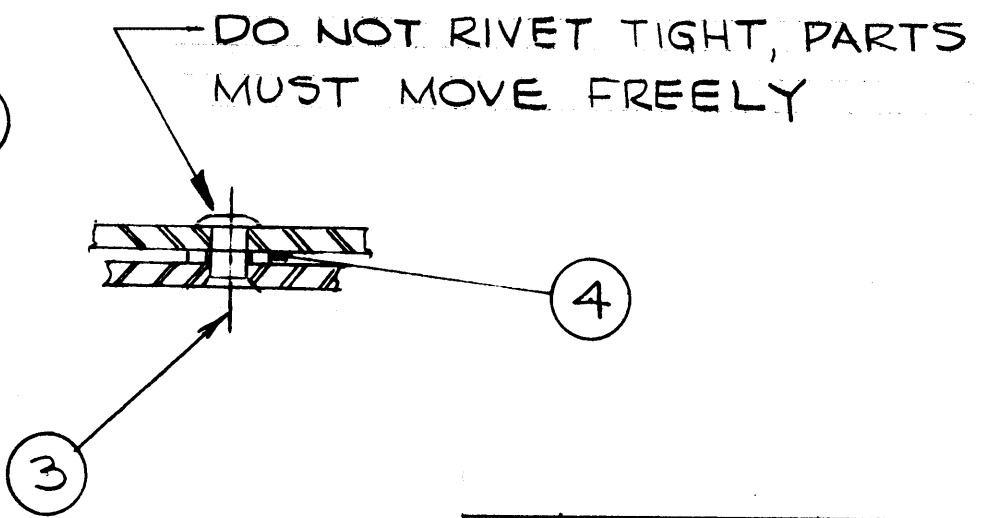
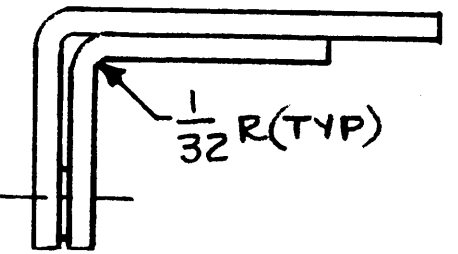
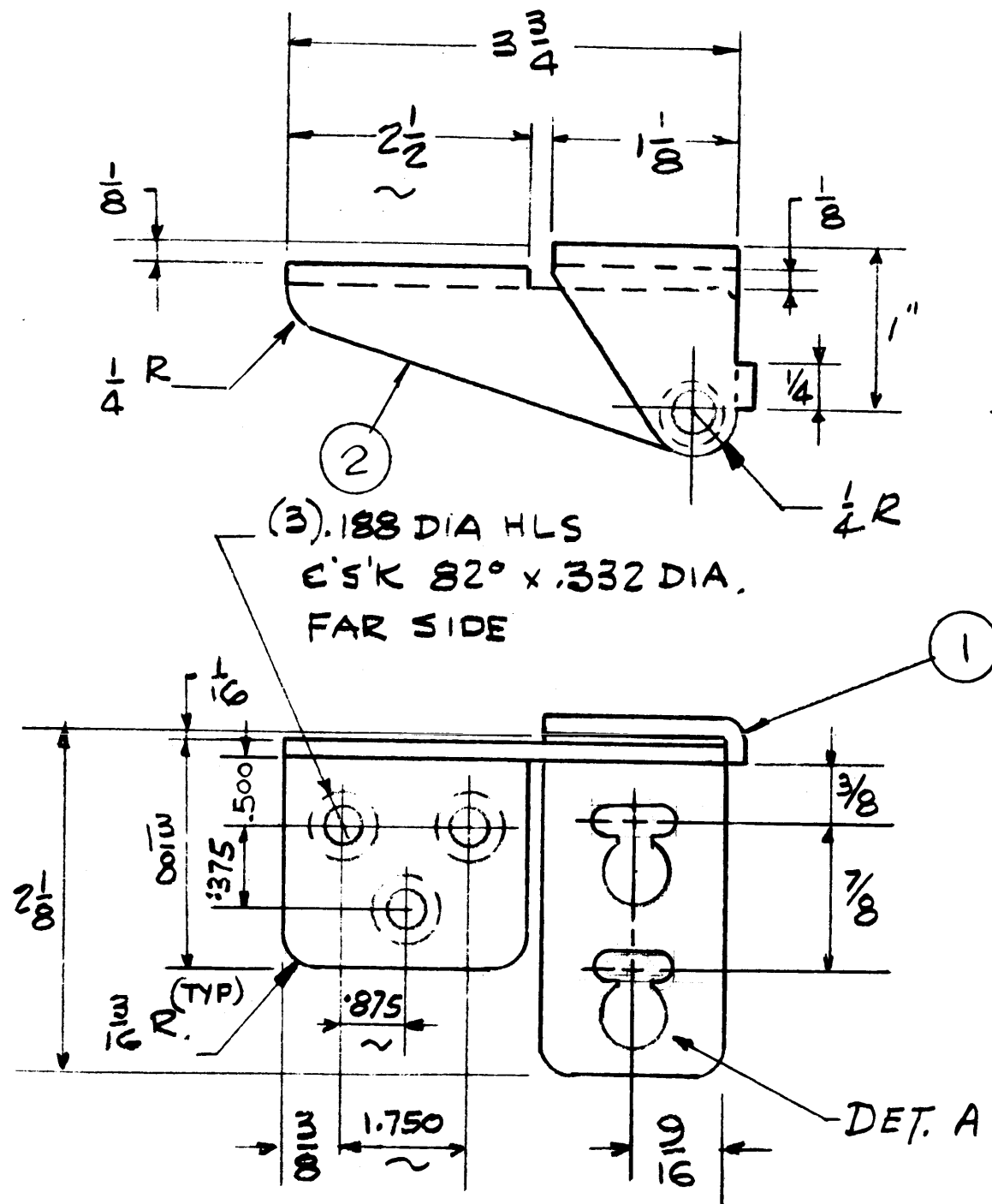


A
HI 118

REVISIONS					
SYM	DESCRIPTION	DATE	E.M.N. NO.	DRAFT	CHNG
X	EXPER. RELEASE	10-18-64	X		
Ø	ORIGINAL RELEASE FOR PRODUCTION	11-25-64	Ø	92	
A	DETAIL "A" REVISED	5-5-65	13989	92	



REQ'D.	ITEM	PART NUMBER	DESCRIPTION	SYMBOL
1	4	FW 10 HBN	#10 FLAT WASHER	
1	3	MS20470A-6-7	3/16 φ x 7/16 BRAZIER UNIV. HD RIVET ALUM.	
1	2	THIS DWG.	HINGE, MOVING PART	
1	1	THIS DWG	HINGE, FIXED PART	

STURMER		LIST OF MATERIAL	
MATERIAL #11 GA. C.R.S.		THE TECHNICAL MATERIEL CORP. MAMARONECK, NEW YORK	
FINISH MIL CHROME PLATE POLISH QQ-C-320-1-18-9500		TITLE TOP HINGE ASSEMBLY	
UNLESS OTHERWISE SPECIFIED DIMENSIONS ARE IN INCHES AND INCLUDE CHEMICALLY APPLIED OR PLATED FINISHES		DRAWN [Signature]	DATE 11-25-64
DECIMALS X ± .05 XX ± .01 XXX ± .005		CHECKED [Signature]	FINAL APPROVAL [Signature]
FRACTIONS ± 1/64 ± 0 .30'		ELECT. DES. [Signature]	DATE 11-25-64
TOLERANCES		MECH. DES. [Signature]	DATE 11-25-64
THE CONTENTS OF THIS DRAWING ARE THE EXCLUSIVE PROPERTY OF THE TECHNICAL MATERIEL CORP. ITS UNAUTHORIZED USE OR REPRODUCTION IN WHOLE OR IN PART IS STRICTLY FORBIDDEN.		SHEET	

1	RAK 102-	A3716
QTY./UNIT	MODEL USED ON	APPV. NO.
SCALE	CODE A	

NOTES