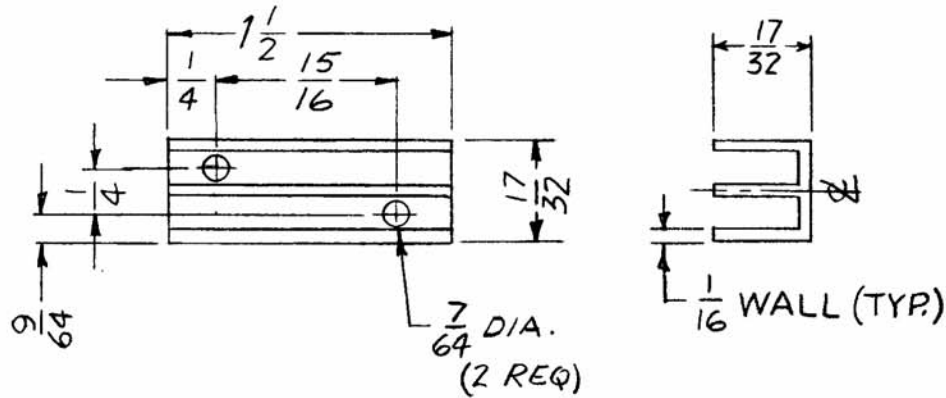


APPLICATION			REVISIONS						
QTY	MODEL USED ON	ASS'Y NO.	LTR	DESCRIPTION	DATE	E.M.N.NO	DRAFT	CHKD	APPD
6	SME(-)-6	A4647	X	EXP. RELEASE	3/12/68	-	HS.	<i>[Signature]</i>	<i>[Signature]</i>
			Ø	ORIG RELEASE FOR PROD	3/25/68	Ø	C.V.	<i>[Signature]</i>	<i>[Signature]</i>



UNLESS OTHERWISE SPECIFIED DIMENSIONS ARE IN INCHES AND INCLUDE CHEMICALLY APPLIED OR PLATED FINISHES		REQ'D	ITEM	PART NUMBER	DESCRIPTION	SYM.
DECIMALS .X ± .05 .XX ± .01 .XXX ± .005		O. POSE LIST OF MATERIAL				
FRACTIONS 1/64 ANGLES 0° .30'		FINAL APPROVAL <i>[Signature]</i> DATE 3-25-68				THE TECHNICAL MATERIEL CORP. MAMARONECK, NEW YORK
MATERIAL EXTRUDED ALUMINUM		MECH. DES. <i>[Signature]</i> DATE 3/25/68				
FINISH S120 BLACK ANODIZE		ELECT. DES. DATE				
S 401 - 451		CHECKED <i>[Signature]</i> DATE 3-25-68				
DRAWN <i>[Signature]</i>		DATE 3.12.68				HEAT SINK
NOTICE TO PERSONS RECEIVING THIS DRAWING THE TECHNICAL MATERIEL CORPORATION claims proprietary right in the material disclosed hereon. This drawing is issued in confidence for engineering information only and may not be reproduced or used to manufacture anything shown hereon without permission from THE TECHNICAL MATERIEL CORPORATION to the user. This drawing is loaned for mutual assistance and is subject to recall at any time.		SIZE A	CODE IDENT. NO. 82679	DWG NO. HD 111	ISSUE Ø	
SCALE 1:1			SHEET		OF	