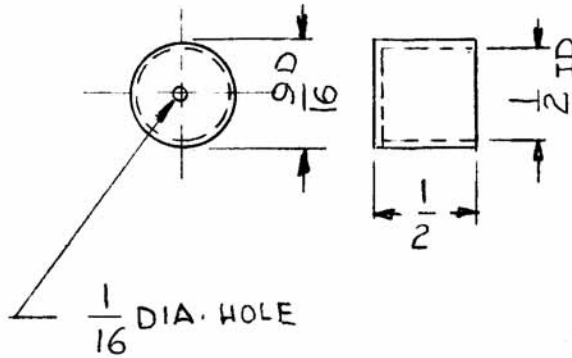




| APPLICATION |               |           | REVISIONS |                                   |        |          |        |      |      |
|-------------|---------------|-----------|-----------|-----------------------------------|--------|----------|--------|------|------|
| QTY         | MODEL USED ON | ASS'Y NO. | LTR       | DESCRIPTION                       | DATE   | E.M.N.NO | DRAFT  | CHKD | APPD |
| 2           | CPP-2         | RX107     | A         | DRAWN A PART & HB TMC No. ASSES-3 | 2-7-89 |          | G.D.L. |      |      |



| UNLESS OTHERWISE SPECIFIED DIMENSIONS ARE IN INCHES AND INCLUDE CHEMICALLY APPLIED OR PLATED FINISHES   |  | REQ'D            | ITEM            | PART NUMBER   | DESCRIPTION | SYM. |
|---|--|------------------|-----------------|---|-------------|------|
| DECIMALS      FRACTIONS<br>.X ± .05      1/64<br>.XX ± .01    TOLS.    ANGLES<br>.XXX ± .005         0°-30'   |  | LIST OF MATERIAL |                 |   |             |      |
| MATERIAL .031THK BRASS  |  | FINAL APPROVAL   | DATE            | <b>THE TECHNICAL MATERIEL CORP.</b><br>MAMARONECK, NEW YORK<br><br>CAP, COVER RECTIFIER |             |      |
| FINISH S135   |  | MECH. DES.       | DATE            |   |             |      |
| NICKEL PLATE  |  | ELECT. DES.      | DATE            |   |             |      |
|   |  | CHECKED          | DATE            |   |             |      |
|   |  | DRAWN            | DATE            |   |             |      |
| NOTICE TO PERSONS RECEIVING THIS DRAWING<br>THE TECHNICAL MATERIEL CORPORATION claims proprietary right in the material disclosed hereon. This drawing is issued in confidence for engineering information only and may not be reproduced or used to manufacture anything shown hereon without permission from THE TECHNICAL MATERIEL CORPORATION to the user. This drawing is loaned for mutual assistance and is subject to recall at any time. |  | SIZE             | CODE IDENT. NO. | DWG NO.   | ISSUE       |      |
|   |  | A                | 82679           | HB 129  | A           |      |
|   |  | SCALE            | 1:1             | SHEET   |             | OF   |

