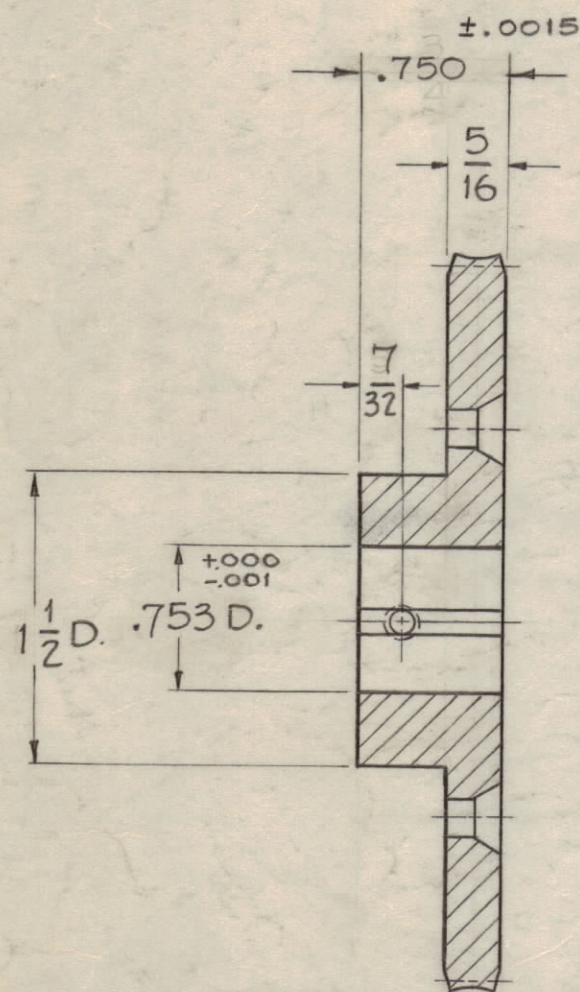
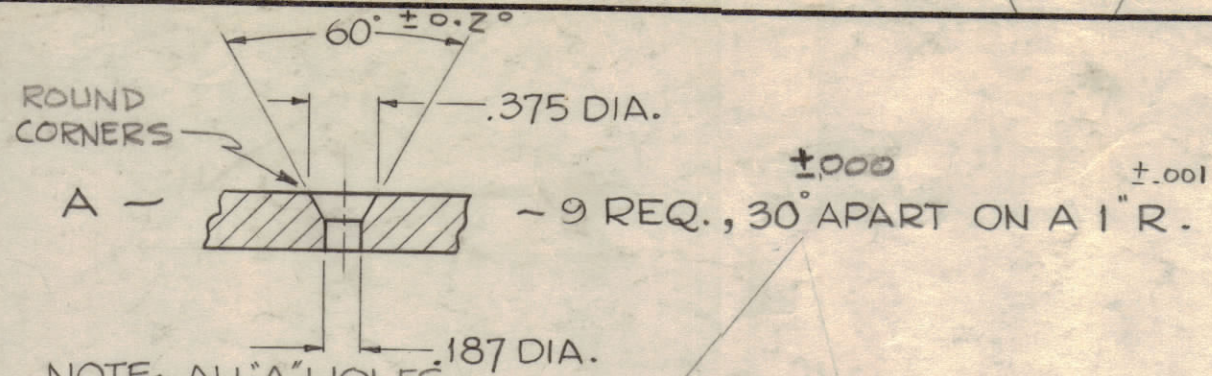


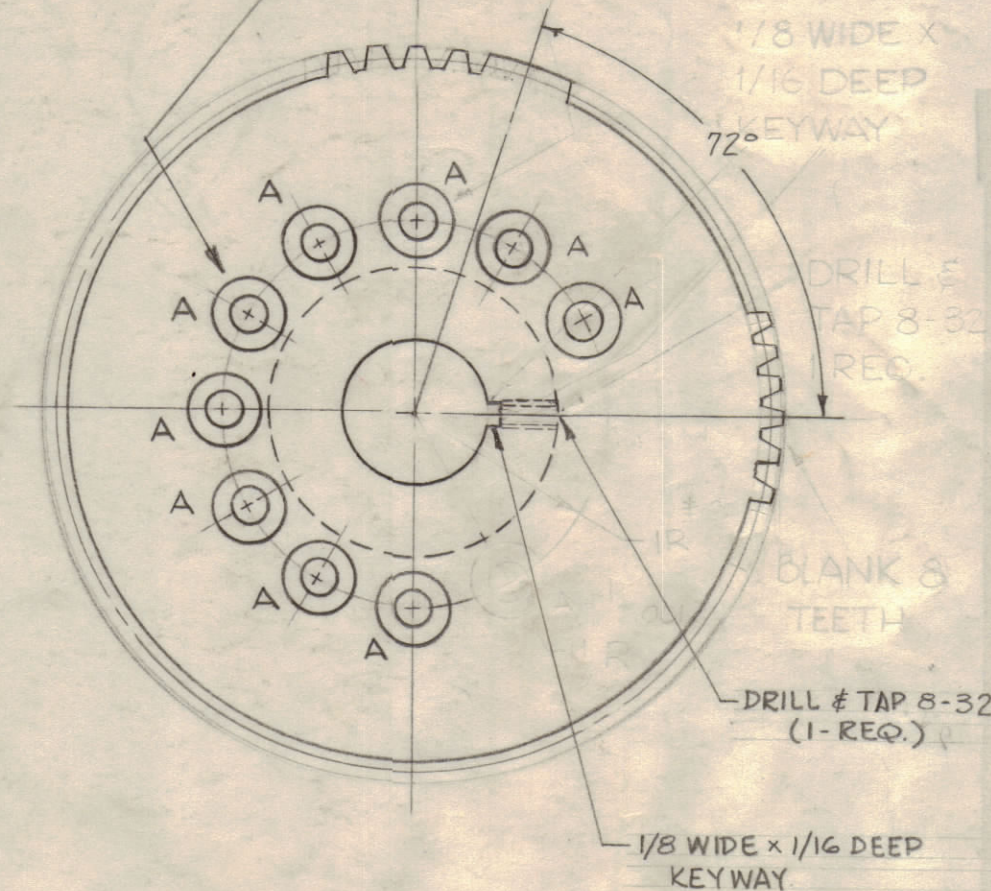
IF IT IS FOUND DESIRABLE TO CHANGE ANY TOLERANCE OR OTHER DETAIL SPECIFIED ON THIS DRAWING NOTIFY THE PURCHASER PROMPTLY.
 MAXIMUM ALLOWABLE TOLERANCES HAVE BEEN DETERMINED AND DEVIATIONS WILL BE CAUSE FOR REJECTION. REMOVE ALL BURRS AND SHARP EDGES.



PITCH DIA. ~ 3.750
 PITCH ~ 16
 THREADS ~ DOUBLE, RIGHT HAND
 NO. OF TEETH ~ 57 (w/ 3 TOOTH BLANK)
 PRESSURE \angle ~ 14 1/2°
 FACE ~ 5/16



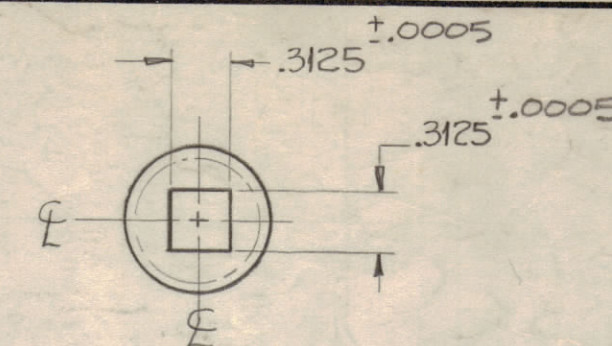
NOTE ~ ALL 'A' HOLES SHOULD MAINTAIN SAME DEPTH.



GEAR, WORM WHEEL

GR-151-1
 MATERIAL ~ STAINLESS STEEL
 1 REQ./UNIT, REF ~ S401-15 (D1148) MOD

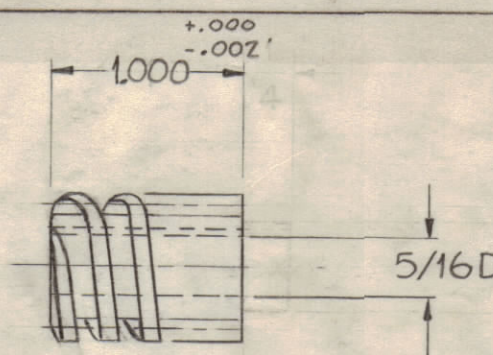
PITCH DIA. ~ .625
 PITCH ~ 16
 THREADS ~ DOUBLE, RIGHT HAND
 PRESSURE \angle ~ 14 1/2°
 FACE ~ 1"



GEAR, WORM

GR-151-3
 MATERIAL ~ D.R. OIL HARDENED STEEL
 1 REQ./UNIT

PITCH DIA. ~ .625
 PITCH ~ 16
 THREADS ~ DOUBLE, RIGHT HAND
 PRESSURE \angle ~ 14 1/2°
 FACE ~ 1"

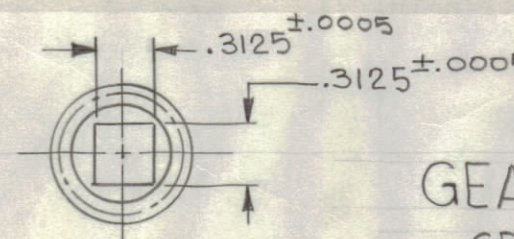
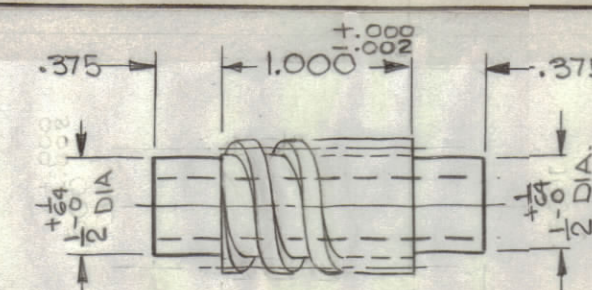


1/8 WIDE X 1/16 DEEP KEYWAY.

GEAR, WORM

GR-151-2
 MATERIAL ~ D.R. OIL HARDENED STEEL
 1 REQ./UNIT, REF ~ S401-15 (GDVH) MOD

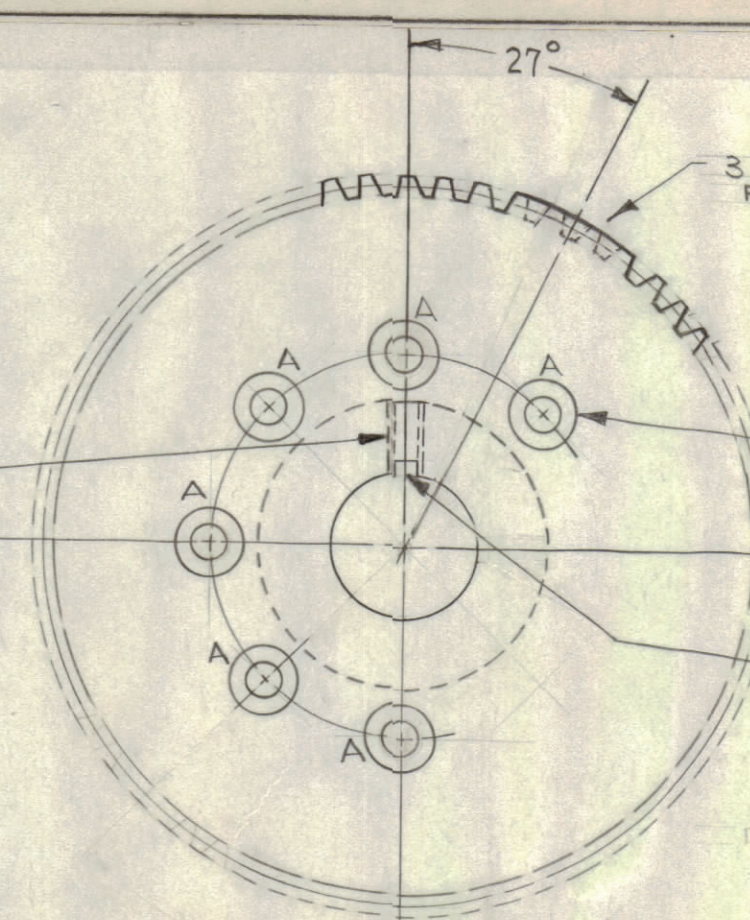
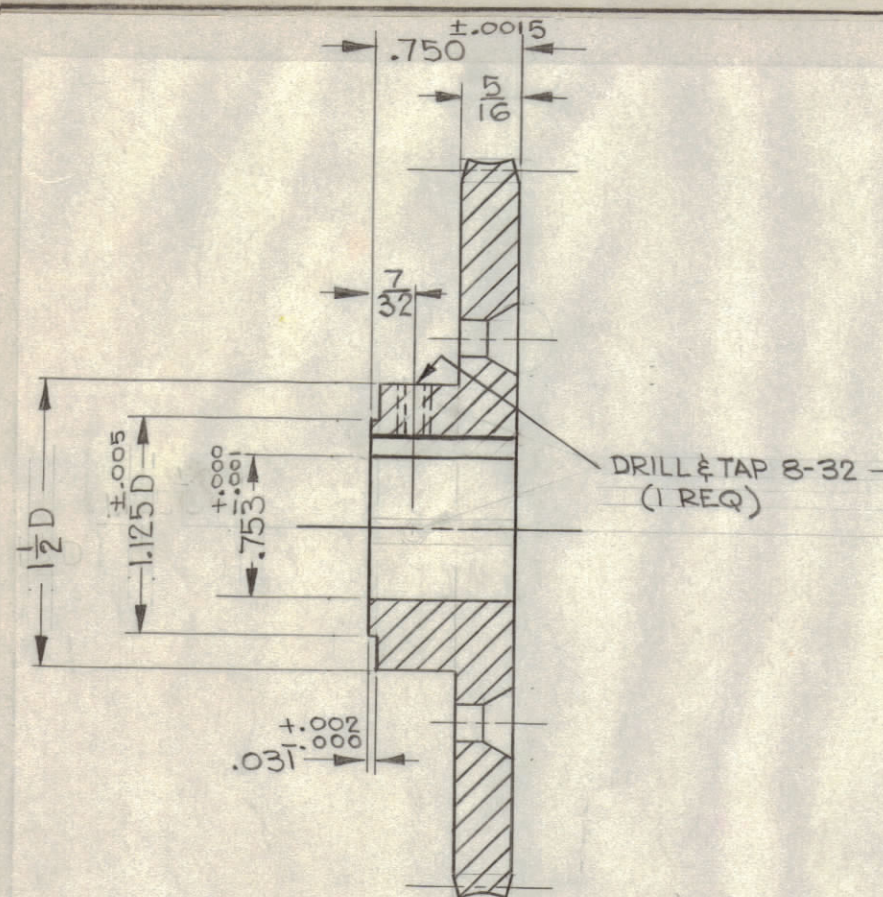
PITCH DIA. ~ .625
 PITCH ~ 16
 THREADS ~ DOUBLE, RIGHT HAND
 PRESSURE \angle ~ 14 1/2°
 FACE ~ 1"



GEAR, WORM

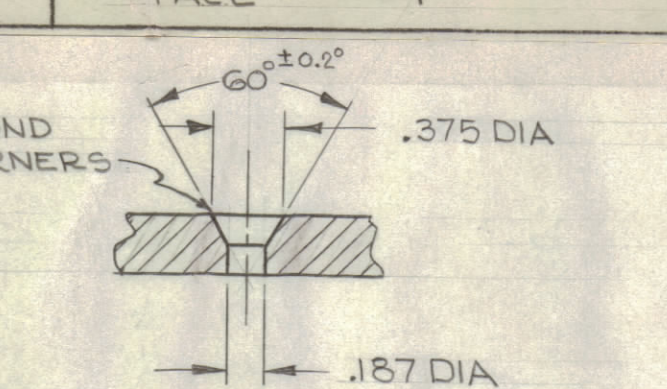
GR-151-5
 MATERIAL ~ D.R. OIL HARDENED STEEL
 1 REQ./UNIT

GR-151 G



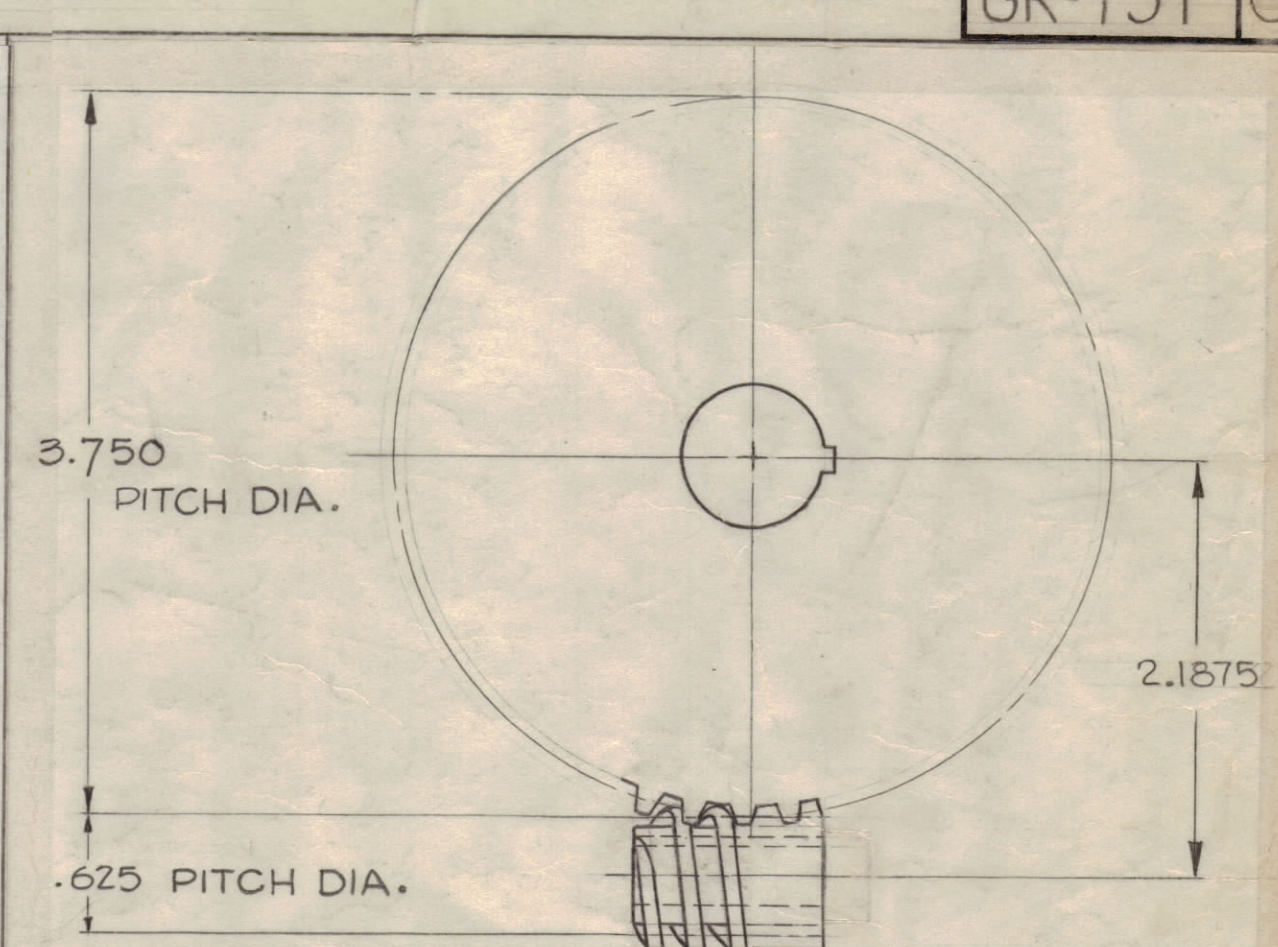
GEAR, WORM WHEEL

GR-151-4
 MATERIAL ~ STAINLESS STEEL
 1 REQ./UNIT, REF ~ S401-15 (D1148) MOD



NOTE: ALL 'A' HOLES SHOULD MAINTAIN SAME DEPTH

PITCH DIA. ~ 3.750
 PITCH ~ 16
 THREADS ~ DOUBLE, RIGHT HAND
 NO. OF TEETH ~ 57 (w/ 3 TEETH BLANK)
 PRESSURE \angle ~ 14 1/2°
 FACE ~ 5/16



REV	DESCRIPTION	DATE	CH. NO.	DRAFTS	CHECKER	ENG. APP.	
G 1	GR-151-4 PICT. CLARIFIED	10-6-63	10141				
F 1	GR-151-5 ADDED	6-18-63	9334				
E 1	GR-151-4 ADDED	2-6-63	9237				
ISSUE	ITEM	CHANGED FROM	DATE	CH. NO.	DRAFTS	CHECKER	ENG. APP.
TOLERANCES		SCALE: FULL (DO NOT SCALE)					
ALL	DEC. DIM. ±	DRILL, PUNCH, COMMERCIAL STOCK					
OTHERS	FRAC. DIM. ±	SIZES AND MANUFACTURERS					
	ANGULAR DIM. ±	TOLERANCES ARE NOT INCLUDED.					

REQ. PER UNIT	MODEL	PROJECT NO.	ASSY. NO.	DATE
1	GPT-200K	AS-124		
1	GPT-40K	AX-209		3-1-60
USED ON				

REQ.	ITEM	PART NO.	DESCRIPTION	SYMBOL
			THE TECHNICAL MATERIEL CORP. MAMARONECK, NEW YORK	
			WORM & WORM GEAR (PA BANDSWITCH)	
			John C. Biele	16
			DRAWN	ELEC. DES. APP. MECH. DES. APP.
			CHECKED	FINAL APPROVAL
				GR-151 G