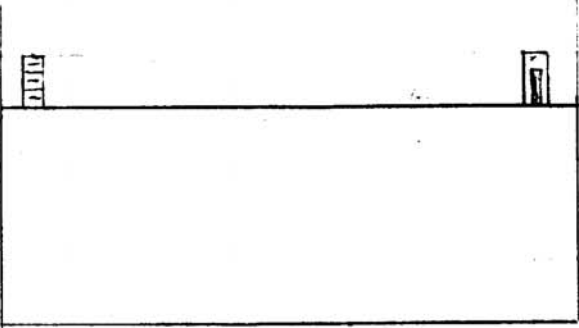
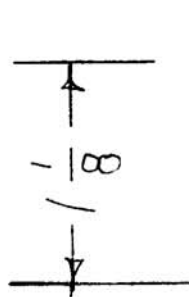
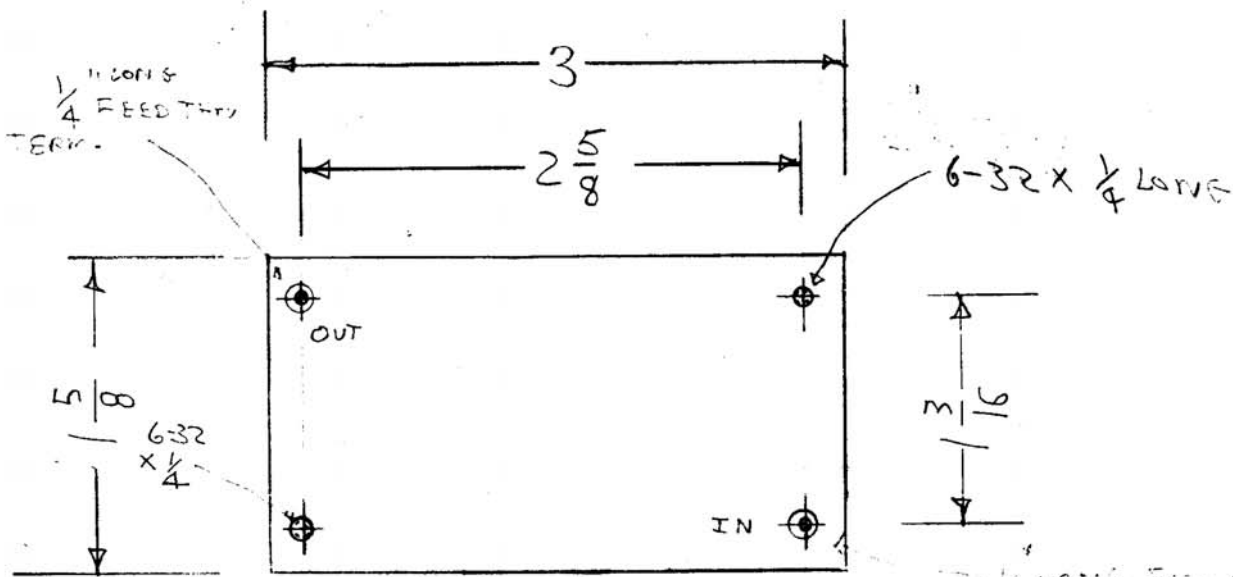


APPLICATION

REVISIONS

QTY	MODEL USED ON	ASS'Y NO.	LTR	DESCRIPTION	DATE	E.M.N.NO	DRAFT	CHKD	APPD
-----	---------------	-----------	-----	-------------	------	----------	-------	------	------



TMC FX 317 FL 0858
 TECHNICAL MATERIEL CORP
 1749.5 KHZ (FL) CRYSTAL FILTER
 BW 0.4 DB ± 3600 HZ
 BW 60 DB ± 15000 HZ
 IMPEDANCE FOR INSERTION LOSS

SPEC S
 1749.5 KHZ XTAL
 FILTER
 BW 0.4 DB ± 3600 HZ
 BW 60 DB ± 15000 HZ
 INSERTION LOSS 6DB
 SOURCE LOAD 50Ω

UNLESS OTHERWISE SPECIFIED DIMENSIONS ARE IN INCHES AND INCLUDE CHEMICALLY APPLIED OR PLATED FINISHES

DECIMALS	FRACTIONS	TOLS.	ANGLES
.X ± .05	1/64		0° - 30'
.XX ± .01			
.XXX ± .005			

REQ'D	ITEM	PART NUMBER	DESCRIPTION	SYM.
LIST OF MATERIAL				
FINAL APPROVAL		DATE	THE TECHNICAL MATERIEL CORP. MAMARONECK, NEW YORK FILTER 1749.5 KHZ IMPEDANCE FOR INSERTION LOSS	
MECH. DES.		DATE		
ELECT. DES.		DATE		
CHECKED		DATE		
DRAWN		DATE		

NOTICE TO PERSONS RECEIVING THIS DRAWING
 THE TECHNICAL MATERIEL CORPORATION claims proprietary right in the material disclosed hereon. This drawing is issued in confidence for engineering information only and may not be reproduced or used to manufacture anything shown hereon without permission from THE TECHNICAL MATERIEL CORPORATION to the user. This drawing is loaned for mutual assistance and is subject to recall at any time.

SIZE A	CODE IDENT. NO. 82679	DWG NO. FX 317	ISSUE
SCALE	SHEET		OF