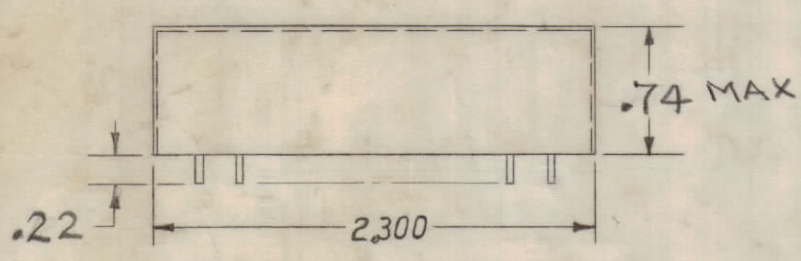


	TMC P/N FX272-.24371	TMC P/N FX272-.25629	TMC P/N FX272-6.290	
H CENTER FREQUENCY (Fo)	.24371 Mc	.25629 Mc	6.290 Mc	
H -3dB POINTS	< .24361 Mc	< .25619 Mc	< 6.28975 Mc	
	> .24381 Mc	> .25639 Mc	> 6.29025 Mc	
-80dB POINTS	> .23472 Mc	> .25000 Mc	> 6.28000 Mc	
	< .25000 Mc	< .26258 Mc	< 6.30000 Mc	
INSERTION LOSS (MAX.)	4.0	4.0	4.0	
OPERATING LIMITS	100 TO 600KC	100 TO 600KC	0 TO 13Mc (SEE NOTE)	
G SPURIOUS	f cps	dB	f cps	dB
	199680		199680	
	205970	-60	205970	-60
	212260		212260	
	218550		218550	
	224840		224840	
	231130		231130	
	237420		237420	
	243710		243710	
	250000	-80	250000	-80
	256290		256290	
	262580		262580	
268870		268870		
275160		275160		
281450		281450		
287740	-60	287740	-60	
294030		294030		
300320		300320		

REVISIONS						
SYM	ZONE	DESCRIPTION	DATE	E.M.N.NO	DRAFT	CHKD APPD
X1		CHART AND SPECS REVISED. STUDS DELETED. CASE MATERIAL WAS .030 BRASS	12-16-66	X1	RME	<i>[Signature]</i>
X2		DRAWING COMPLETELY REVISED	3-3-67		RME	<i>[Signature]</i>
Ø		ORIGINAL RELEASE FOR PRODUCTION	8-8-67		<i>[Signature]</i>	<i>[Signature]</i>
A		NOTES AND SPECS REVISED "INSERTION LOSS" ADD TO P/N CHT	6-22-67	18292	<i>[Signature]</i>	<i>[Signature]</i>
B		CHART & PICTORIAL REVISED	1/21/69	19218	<i>[Signature]</i>	<i>[Signature]</i>
C		CHART REVISED COMPLETELY	2-9-70	19750	<i>[Signature]</i>	<i>[Signature]</i>
D		ADD SPURIOUS CHART, ETC	6-14-70	19916	CV	<i>[Signature]</i>

NOTE: SPURIOUS AT A FREQUENCY OF N X F WHERE F= 10KHZ AND N= INTEGER, MUST BE -80dB DOWN

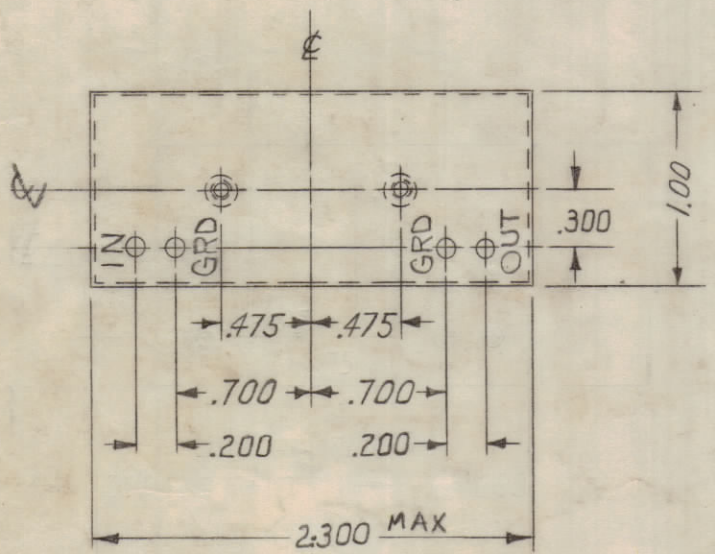


THE TECHNICAL MATERIEL CORPORATION
FX272-

REFER TO CHART FOR APPROPRIATE TMC PART No.

*TERMINALS STEEL WIRE .040DIA
INSERTS 4-40 UNC-2B
4 FULL THREADS (2 PLACES)

UNIT TO BE HERMETICALLY SEALED
FINISH: POWDER BLASTED NICKEL
CASE MATERIAL: 24 GA (.024) CRS
MARKING: BLACK EPOXY INK (REFER TO CHART)
OUT & IN TERMINAL SEALS: GLASS OR TEFLON
GRD TERMINALS SOLDERED TO CASE INTERNALLY

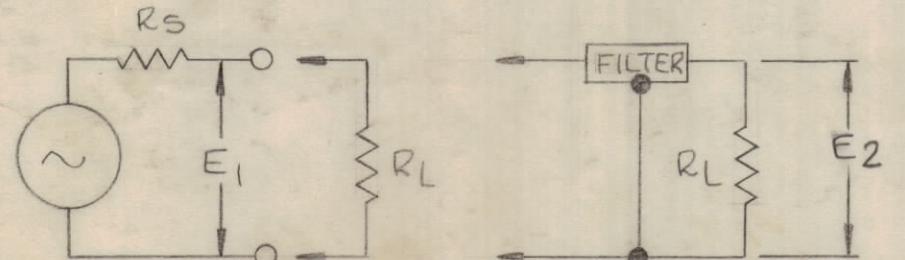


INSERTION LOSS TEST CIRCUIT

INSERTION LOSS DEFINED AS 20 LOG A

WHERE $A = \frac{|E_1|}{|E_2|}$ AS MEASURED AT Fo OF FILTER.

EO IS FIXED AT ANY FREQUENCY IN THE PASSBAND OF THE FILTER



MAXIMUM ALLOWABLE TOLERANCES HAVE BEEN DETERMINED AND ANY DEVIATIONS WILL BE CAUSE FOR REJECTION.

SPECIFICATIONS

SOURCE AND LOAD IMPEDANCE: FX272-6.290, 470 OHMS; ALL OTHERS 1000 OHMS
 $10 \leq C \leq 30$ pf

MAXIMUM INPUT LEVEL: 3 VOLTS rms

OPERATING ENVIRONMENT: 0°C TO 65°C

STORAGE ENVIRONMENT: -62°C TO 75°C

SHOCK CAPABILITY: 20 G's IN 10 MILLISECONDS APPLIED ALONG 3 MUTUALLY PERPENDICULAR AXES

VIBRATION CAPABILITY: 5 CPS TO 50 CPS AT AN AMPLITUDE OF 1.3 G

QTY REQ	ITEM	PART NO.	DESCRIPTION	SYMBOL
BILL OF MATERIAL				
THE TECHNICAL MATERIEL CORP. MAMARONECK, NEW YORK				
SINGLE FREQ., SELECTOR FIL. (MODEL HFRR-4)				
FINAL APPROVAL <i>[Signature]</i>		DATE 3/1/67	CODE 82679	
MECH. DES.		DATE		
ELECT. DES.		DATE		
MATERIAL		CHECKED <i>[Signature]</i>	DATE	SIZE C
FINISH		DRAWN <i>[Signature]</i>	DATE 10.20.66	
APPROVED FOR BUSHIPS		DWG. NO. FX272		ISSUE C
CONTRACT NO.		SCALE		SHEET OF