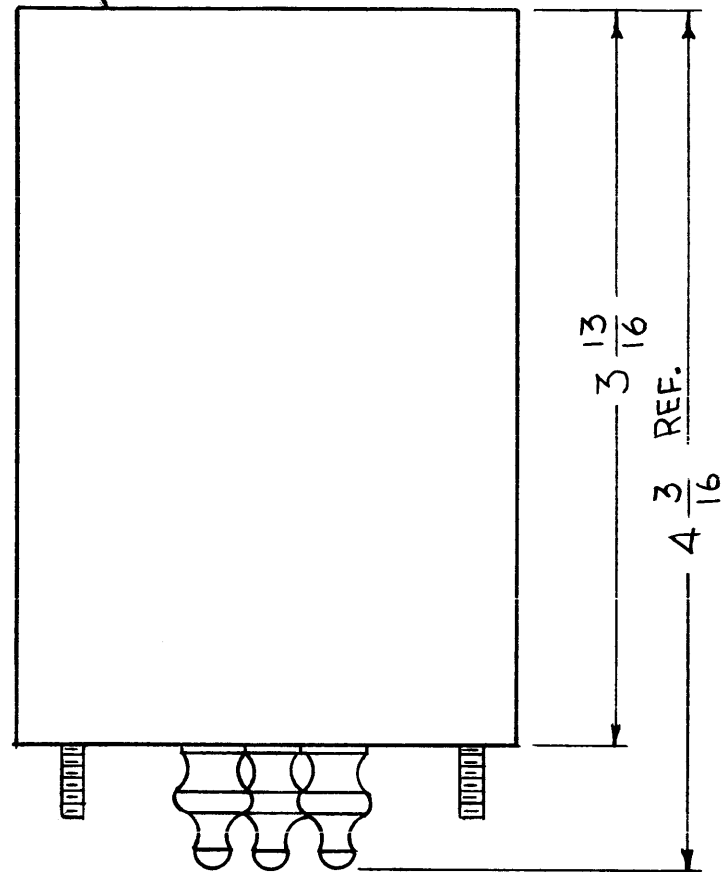
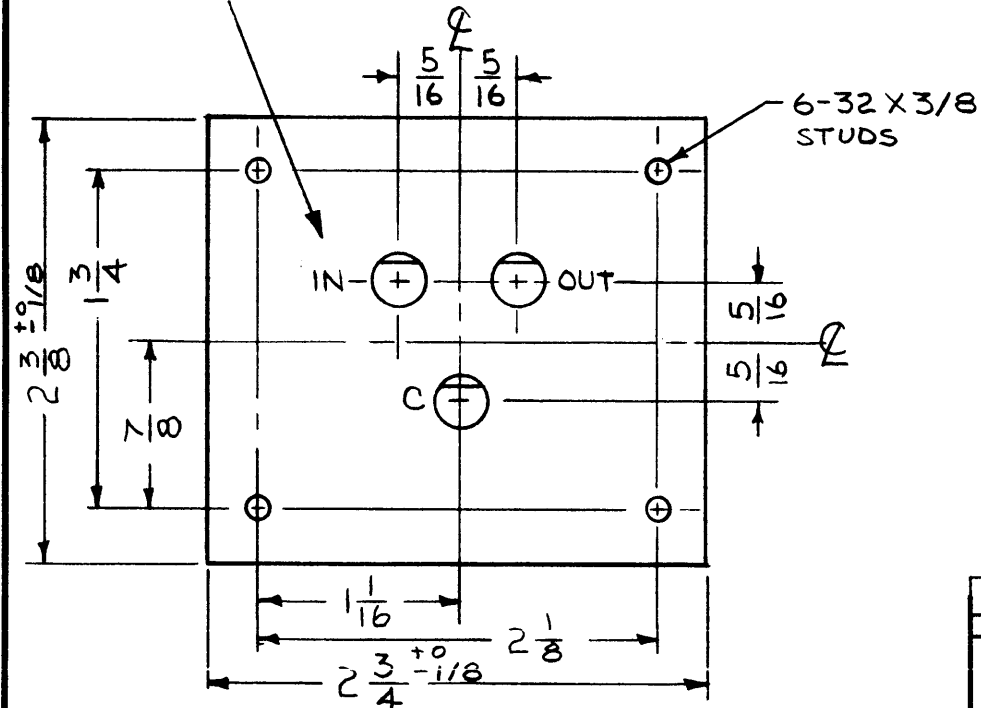


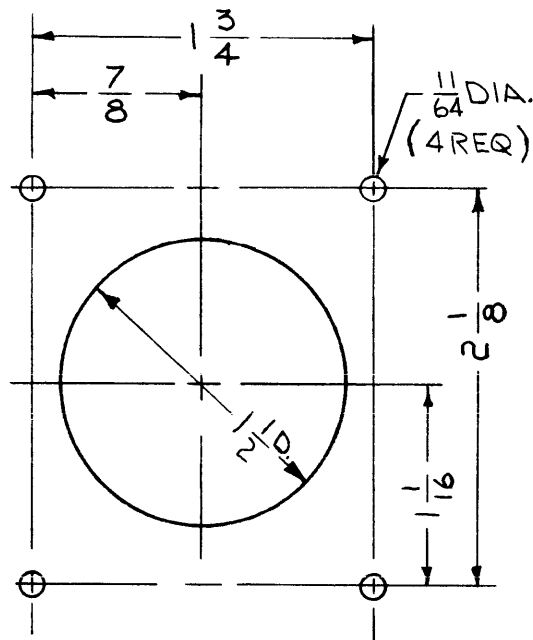
MARK TMC PART/NO.
1/8 HIGH W/LATEST
REVISION LETTER



TERMINAL IDENTIFICATION TO BE
MAINTAINED WITHIN 1-1/2 DIA CIRCLE
LETTERING TO BE 1/8 HIGH.

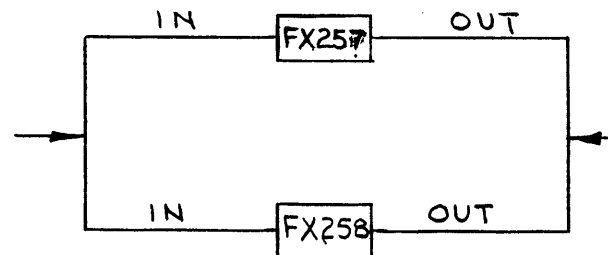


NOTES



MOUNTING DETAIL

SHALL BE CAPABLE OF
OPERATING AS FOLLOWS:



WITH NO DETERIORATION
OF ITS CHARACTERISTICS.

FX258

REVISIONS

SYM	DESCRIPTION	DATE	E.M.N. NO.	DRAFT	CHKD	APPD
X	EXPERIMENTAL RELEASE	9-28-66	X	RME		
Ø	ORIGINAL RELEASE FOR PRODUCTION	9-8-67	Ø	RG	<i>[Signature]</i>	

SPECIFICATIONS

FILTER, BANDPASS, CENTERED ON 2425 CPS
FLAT WITHIN 3 DB TO ±100 CPS DOWN NOT LESS THAN 40 DB AT ±340 CPS
INSERTION LOSS 6 DB

INPUT & OUTPUT IMPEDANCE: 600 OHMS

TERMINALS: SHALL BE STEATITE BODY, TINNED LUGS, AND NEOPRENE
GLAND, HERMETICALLY SEALED (TE134 OR EQUAL)

CASE: SHALL BE MADE OF COLD ROLLED STEEL, ELECTRO TINNED

FINISH: SHALL BE GREY, TMC SPECIFICATION S115 THE STUDS AND
TERMINALS SHALL BE FREE OF PAINT

LETTERING: SHALL BE 1/8 GOTHIC CHARACTERS AND SHALL BE COATED
WITH CLEAR FUNGICIDAL LACQUER, EXCEPT METAL STAMPING

UNIT SHALL BE HERMETICALLY SEALED

REQ'D.	ITEM	PART NUMBER	DESCRIPTION	SYMBOL
--------	------	-------------	-------------	--------

LIST OF MATERIAL

MATERIAL	THE TECHNICAL MATERIEL CORP. MAMARONECK, NEW YORK
FINISH	TITLE FILTER ; BANDPASS 2425 CPS RECEIVING

UNLESS OTHERWISE SPECIFIED DIMENSIONS ARE IN INCHES AND INCLUDE CHEMICALLY APPLIED OR PLATED FINISHES	DRAWN RME	DATE 9-28-66	FINAL APPROVAL <i>[Signature]</i>	DATE 10/11/67
	CHECKED <i>[Signature]</i>	DATE		
	ELECT. DES. <i>[Signature]</i>	DATE	FX258	Ø
DECIMALS .X ± .05 .XX ± .01 .XXX ± .005	TOLERANCES	FRACTIONS ± 1/64 ANGLES ± 0° 30'	MECH. DES.	DATE
			SHEET	REV. LTR.

SFP-3		ASS'Y. NO.
Q'TY./UNIT	MODEL USED ON	
SCALE	CODE C	S401-308

THE CONTENTS OF THIS DRAWING ARE THE EXCLUSIVE PROPERTY
OF THE TECHNICAL MATERIEL CORP. ITS UNAUTHORIZED USE OR
REPRODUCTION IN WHOLE OR IN PART IS STRICTLY FORBIDDEN.