

MARK TMC P/N  
W/LATEST  
REV. LETTER

THE TECHNICAL MATERIEL CORP.  
FX 253

TOP VIEW

FIG. II

TERMINALS - STL. WIRE .030 DIA.

FX 253 B

REVISIONS						
SYM	DESCRIPTION	DATE	E.M.N. NO.	DRAFT	CHKD	APPD
B	ORIGINAL RELEASE FOR PROD	12/20/65				
A	DIM 1.500 WAS 2.250 ON (FIG II)	1/12/66	15529	X.W.		
B	KC/S WAS CPS, TMC GRAY(SIIS) ADDED	1/19/66	17056	JD		

ELECTRICAL SPECIFICATIONS

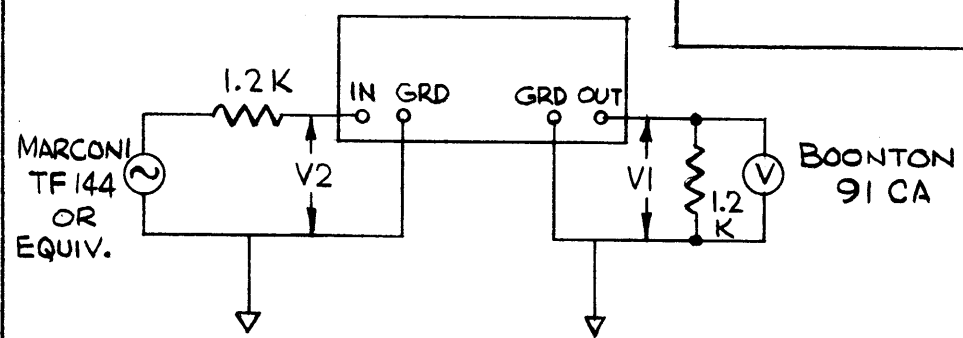
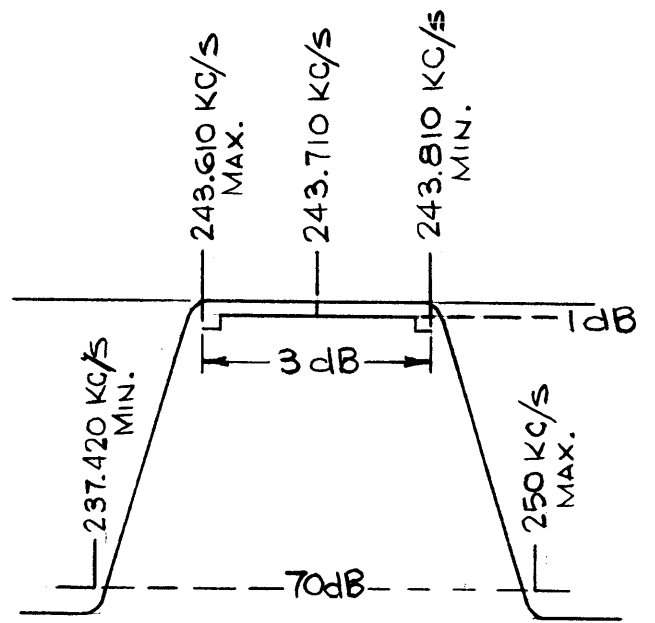
3db B.W. : 243.610 KC/S MAX.  
243.810 KC/S MIN.  
70db B.W. : 237.420 KC/S MIN.  
250.000 KC/S MAX.  
SOURCE IMPEDANCE : 1.2 K Ω ± 10%  
LOAD IMPEDANCE : 1.2 K Ω ± 10%  
INSERTION LOSS : 6.0 dB  
RIPPLE : 1 dB MAX.

ENVIRONMENTAL REQUIREMENTS

OPERATING TEMPERATURE RANGE : 0 TO 50°C

MECHANICAL REQUIREMENTS

UNIT TO BE HERMETICALLY SEALED  
DIMENSIONS : SEE FIG. II  
FINISH : POWDER BLASTED NICKEL OR TMC GRAY(SIIS)  
MATERIAL : .030 BRASS  
MARKING : BLACK EPOXY INK



TEST CIRCUIT

CMRB-1		ASS'Y. NO.
QTY./UNIT	MODEL USED ON	
SCALE	CODE	
	C	

THE CONTENTS OF THIS DRAWING ARE THE EXCLUSIVE PROPERTY OF THE TECHNICAL MATERIEL CORP. ITS UNAUTHORIZED USE OR REPRODUCTION IN WHOLE OR IN PART IS STRICTLY FORBIDDEN.

REQ'D.	ITEM	PART NUMBER	DESCRIPTION	SYMBOL
POSE LIST OF MATERIAL				
MATERIAL		SEE NOTES	THE TECHNICAL MATERIEL CORP. MAMARONECK, NEW YORK	
FINISH		SEE NOTES	TITLE 243.710 KC/S BANDPASS CRYSTAL FILTER 3dB BW 200 KC/S MIN.	
UNLESS OTHERWISE SPECIFIED DIMENSIONS ARE IN INCHES AND INCLUDE CHEMICALLY APPLIED OR PLATED FINISHES		DRAWN H. AUSTIN	DATE 12-7-65	FINAL APPROVAL DATE 12/20/65
DECIMALS .X ± .05 .XX ± .01 .XXX ± .005		CHECKED H.A.	DATE 12-8-65	DATE 12/20/65
FRACTIONS ± 1/64 ANGLES ± 0° 30'		ELECT. DES.	DATE	DATE
TOLERANCES		MECH. DES.	DATE 12/20/65	DATE
			SHEET	REV. LTR.
			FX 253	B

NOTES