

A
FX 252

REVISIONS					
SYM	DESCRIPTION	DATE	E.M.N. NO.	DRAFT	CHKD APPD
Ø	ORIGINAL RELEASE FOR PROD	12/20/65			FCB MAA
A	DIM 1.500 WAS 2.250 ON (FIG II)	1/12/66/5529		H.V.	FCB MAA

ELECTRICAL SPECIFICATIONS

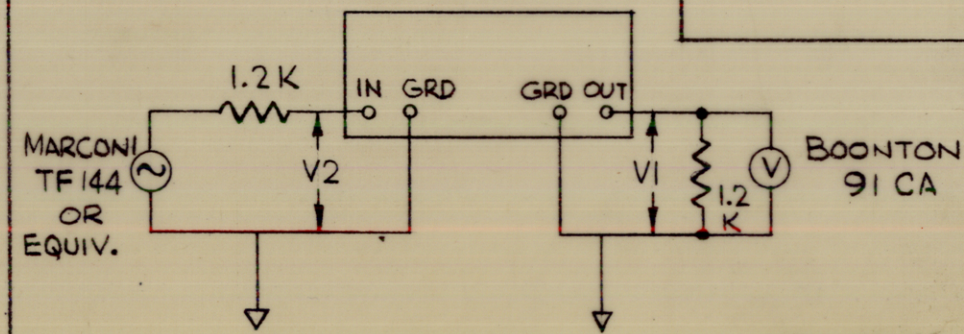
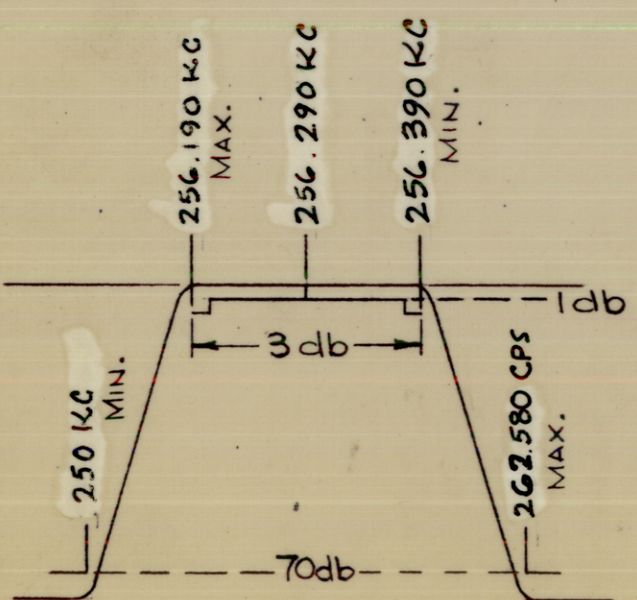
3db B.W. : 256.190 KC MAX.
 256.390 KC MIN.
 70db B.W. : 250.000 KC MIN.
 262.580 KC MAX.
 SOURCE IMPEDANCE : 1.2 KΩ ± 10%
 LOAD IMPEDANCE : 1.2 KΩ ± 10%
 INSERTION LOSS : 6.0 db
 RIPPLE : 1 db MAX.

ENVIRONMENTAL REQUIREMENTS

OPERATING TEMPERATURE RANGE : 0 TO 50°C

MECHANICAL REQUIREMENTS

UNIT TO BE HERMETICALLY SEALED
 DIMENSIONS : SEE FIG. II
 FINISH : POWDER BLASTED NICKEL
 MATERIAL : 030 BRASS
 MARKING : BLACK EPOXY INK



TEST CIRCUIT

REQ'D.	ITEM	PART NUMBER	DESCRIPTION	SYMBOL
POSE LIST OF MATERIAL				
MATERIAL		SEE NOTES	THE TECHNICAL MATERIEL CORP. MAMARONECK, NEW YORK	
FINISH		SEE NOTES	TITLE FILTER, CRYSTAL BANDPASS FILTER	
UNLESS OTHERWISE SPECIFIED DIMENSIONS ARE IN INCHES AND INCLUDE CHEMICALLY APPLIED OR PLATED FINISHES		DRAWN H. AUSTIN	DATE 12-7-65	FINAL APPROVAL <i>[Signature]</i>
		CHECKED <i>[Signature]</i>	DATE 12-8-65	DATE 12/20/65
		ELECT. DES. <i>[Signature]</i>	DATE	FX 252
		MECH. DES. <i>[Signature]</i>	DATE 12/20/65	A
			SHEET	REV. LTR.

NOTES

THE CONTENTS OF THIS DRAWING ARE THE EXCLUSIVE PROPERTY OF THE TECHNICAL MATERIEL CORP. ITS UNAUTHORIZED USE OR REPRODUCTION IN WHOLE OR IN PART IS STRICTLY FORBIDDEN.

QTY./UNIT	MODEL USED ON	ASS'Y. NO.
SCALE	CODE	
	C	

DECIMALS	FRACTIONS
.X ± .05	± 1/64
.XX ± .01	ANGLES
.XXX ± .005	± 0° 30'

TOLERANCES