

A
FX 243

REVISIONS						
SYM	DESCRIPTION	DATE	E.M.N. NO.	DRAFT	CHKD	APPD
X1	SPECS & GRAPH CLARIFIED	5/16/66	X1	JA	JDA	
Ø	ORIGINAL RELEASE FOR PRODUCTION	5/17/66	Ø	CV		JDA
A	"OR GLASS" ADDED TO TERMINALS	9/30/66	16923	WLO	Q/S	JDA

ELECTRICAL SPECIFICATIONS:

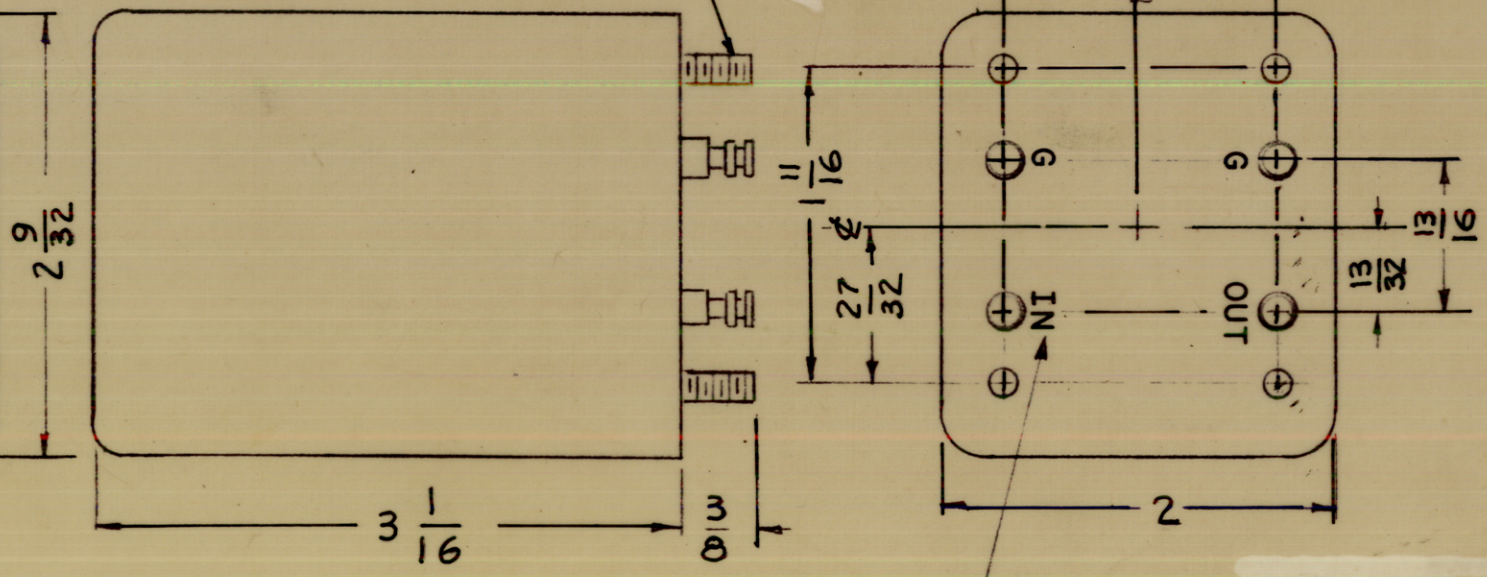
1. TYPE: LOWER SIDEBAND
2. DB MEASUREMENTS: ALL DB MEASUREMENTS ARE RELATIVE TO MAXIMUM SIGNAL RESPONSE IN THE PASS BAND.
3. CARRIER FREQUENCY: 250.000 KCS.
4. CARRIER SUPPRESSION: AT LEAST 55DB.
5. -1DB POINTS: NOT LOWER THAN 249.750 & NOT HIGHER THAN 243.920KCS
6. -60DB POINTS: 243.500 KCS MINIMUM AND 250.000 KCS MAX.
7. INSERTION LOSS 10DB MAXIMUM
8. INPUT IMPEDANCE: 10K OHMS UNBALANCED.
9. OUTPUT IMPEDANCE: 10K OHMS UNBALANCED.
10. PASS BAND RESPONSE VS. TEMPERATURE:
 - ±0.5db FROM + 15°C TO + 55°C
 - ±1.5db FROM - 30°C TO + 15°C
 - ±3.0db FROM - 40°C TO - 30°C

NOTE: CHANNEL DESIGNATION REFERS TO 250.000 KCS FURTHER SIDEBAND INVERSIONS MUST BE TAKEN INTO ACCOUNT IN DETERMINING THE FINAL CHANNEL DESIGNATION.

MECHANICAL SPECIFICATIONS:

CASE: STEEL
 FINISH: TMC GRAY (S-115) OR POWDER BLASTED BRIGHT NICKEL
 NOTE: TERMINAL END UNPAINTED
 MOUNTING: 6-32 X 3/8 STUDS (4 required)
 TERMINAL: DOUBLE END PIN TYPE, BRASS, SILVER PLATED, TEFLON OR GLASS INSULATED

FX 243
 LOWER SIDE BAND
 FILTER
 THE TECHNICAL MATERIEL
 CORPORATION
 MAMARONECK NEW YORK



METAL STAMP AS SHOWN 1/8 HIGH GOTHIC

O. POSE		LIST OF MATERIAL			
MATERIAL		THE TECHNICAL MATERIEL CORP. MAMARONECK, NEW YORK			
FINISH		TITLE FILTER, BANDPASS LOWER SIDE BAND - 6KCS -			
UNLESS OTHERWISE SPECIFIED DIMENSIONS ARE IN INCHES AND INCLUDE CHEMICALLY APPLIED OR PLATED FINISHES		DRAWN	DATE	FINAL APPROVAL	
DECIMALS .X ± .05 .XX ± .01 .XXX ± .005		G-DL	8-13-65	JDA M. Hay	
FRACTIONS ± 1/64 ANGLES ± 0° 30'		CHECKED	DATE	DATE	
TOLERANCES		JDA		5/18/66	
		ELECT. DES.	DATE	FX 243	
		MECH. DES.	DATE	A	
				SHEET	
				REV. LTR.	

MARKING PROCESS: AS PER TMC SPECIFICATION S-727.

1	SBE-10	1
Q'TY./UNIT	MODEL USED ON	ASS'Y. NO.
SCALE 1:1	CODE C	

NOTES

THE CONTENTS OF THIS DRAWING ARE THE EXCLUSIVE PROPERTY OF THE TECHNICAL MATERIEL CORP. ITS UNAUTHORIZED USE OR REPRODUCTION IN WHOLE OR IN PART IS STRICTLY FORBIDDEN.